



FERRIS STATE  
UNIVERSITY

*PHARMACY FORWARD*

Dear Alumni,

Three years ago, the College of Pharmacy — with the assistance of our Alumni Advisory Board and the university's Advancement and Marketing team — embarked upon an initiative to increase communication with graduates through receptions at national meetings and with several local events. This was done for one reason: to increase alumni support in all aspects of the college's operations.

Today, our alumni are engaged at record levels:

- We have more than 300 active preceptors across Michigan, most of whom are graduates of our program.
- Participation among Pharmacy alumni in Ferris' new student call center leads the university.
- Alumni routinely participate in admission of the next class of students by serving on the interview team.
- Alumni frequently contact us with requests for student placements in their practices.

College of Pharmacy alumni also are playing a key role in **PHARMACY FORWARD**, our first-ever campaign to secure funding critical to continued growth and competitiveness. The campaign, led by co-chairs Jeff Rowe (P '79) and Andy Young (P '79), is well on the way to its \$9.4 million goal.

The momentum gained during the past three years must continue to build and grow. With alumni support, scholarships will make it possible for a student to become a pharmacist; nationally-ranked students will choose Ferris as their destination because of generous scholarships; students will be engaged with faculty in basic and clinical research; and all students will enjoy the benefits of learning in a state-of-the-art facility with simulated environments that reflect current and future practice directions.

We are thankful for the generosity College of Pharmacy alumni already have demonstrated through participation and financial contributions that will secure the success of thousands of graduates who will enter this esteemed profession.

Your support helps advance the college's mission to "... educate and support professionals who positively influence and impact the health outcomes of the people they serve."

Your investment will move the College of Pharmacy forward, advancing its legacy in pharmacy education.

Go Bulldogs!



Stephen Durst, B.S. ('81), Pharm.D.  
Dean

**PHARMACY FORWARD** is Ferris State University's first effort to secure the future of its College of Pharmacy through donor investment in this landmark program. The convergence of several factors led to initiation of the \$9.4 million campaign, including the increasing financial need of students, needed upgrades to the current building, a growing need for non-general fund support to provide a foundation for research and diminished public support of higher education.

The approaching 125th anniversary of Ferris' first Pharmacy graduate provides a milestone that marks the college's long and respected history. Since 1893, more than 6,000 College of Pharmacy alumni have provided care for the patients they serve, lead the profession in countless local, state and national offices, and served as engaged members of their professional and civic communities. With this history of achievement, it is appropriate that donors and alumni of the college play a substantial role in its future.

Growth of the program, with an annual entering class of 150, necessitates innovation and expansion of its already impressive footprint. The first two years of the professional curriculum are on the Big Rapids campus, and the third year takes place at the college's Center for Innovational Learning and Research in the heart of the evolving "Medical Mile" in downtown Grand Rapids. For their fourth year, students participate in clinical practice across Michigan, from Marquette to Battle Creek and from Kalamazoo to Bay City. Few pharmacy programs in the nation boast a more substantial footprint.

As pharmacists play an ever-increasing role in the delivery of primary care, Ferris graduates are the first contacts of patients seeking care. As health care practices evolve to provide more affordable and accessible services, Ferris graduates are developing innovative practices. And as residents recognize the vital role pharmacies play in the vitality of their communities, Ferris graduates are the face of pharmacy throughout Michigan.

The impact of the **PHARMACY FORWARD** initiative cannot be overstated. The future of higher education and pharmacy education will be filled with challenges that will force changes in all aspects of the college. Recruitment of the finest students will require significant scholarship support. Continued success in recruitment and retention of faculty will require contemporary instructional and research resources. And a course of study that utilizes state-of-the-art instructional techniques will require facilities with the latest in simulated environments and support of inter-professional education and practice.

## FACILITIES

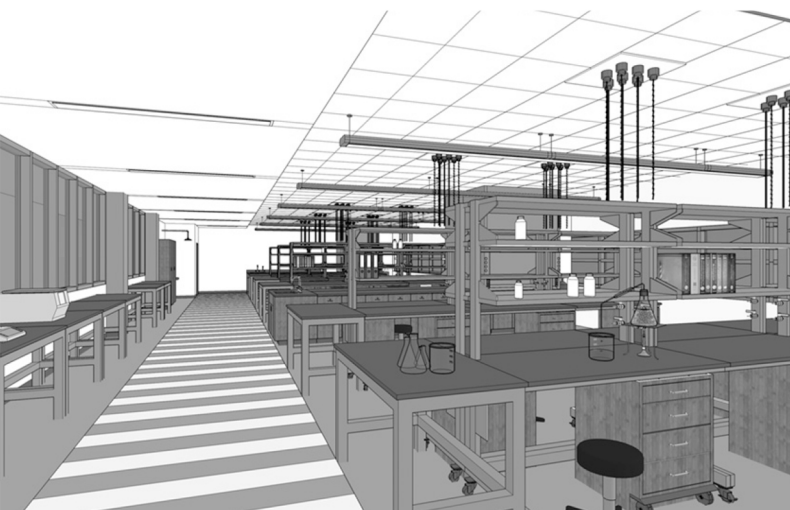
Goal: \$4.9 million

Since its construction in 1972, the Pharmacy Building on Ferris' Big Rapids campus has provided students with instructional and research space that prepared them for practice in all areas of the profession. Incorporation of new instructional methods and the expansion of simulation in education and training, however, necessitates complete renovation of the building. Creation of this new learning environment is being led by a transformational gift from alumnus Phil Hagerman and his wife, Jocelyn, and the Hagerman Foundation. Additional contributions are essential for timely completion of the project. We must ensure students are provided with the education and training that reflects the college's tradition of excellence.

Creation of work space for small student groups and renovation of the building's practice-skills lab is the renovation's first priority. Initial architectural plans call for a practice simulation laboratory with a functioning pharmacy, a simulated environment for both hospital and community pharmacy practice, and a sterile products room that will provide students with needed skills in the preparation of sterile products. Patient care rooms will be included for the pharmacy's operations and to accommodate standardized patients in practice simulations.

Research laboratories on the building's second and third floors will be expanded to support additional faculty/student research. Ferris has committed more than \$900,000 to development of a core laboratory facility on campus and developed the Office of Research and Sponsored Programs. The expanded research facilities will support the teacher/scholar model that recognizes the importance of teaching and the role of research in enhancing instruction. All labs will be designed to accommodate faculty and students engaged in active research.

With completion of the renovation, the newly named Hagerman Pharmacy Building will be a state-of-the-art facility that provides several generations of pharmacists with the knowledge and skills required for evolving practice models.





---

"The planned renovations of both instructional and research space will complement the college's facilities on the Medical Mile in downtown Grand Rapids, providing students with an excellent learning environment throughout the Doctor of Pharmacy program. The role of facilities cannot be overstated in a professional-graduate program that emphasizes a foundation in science."

– Thomas Dowling, Pharm.D. ('93), Ph.D.  
Director, Office of Academic Research  
Assistant Dean, Pharmacy Practice

---

## STUDENT SCHOLARSHIPS

Goal: \$2.5 million

The **PHARMACY FORWARD** initiative joins a university-wide effort to address student debt. Undergraduate debt averages \$38,000 across the university, while Pharmacy students average more than \$68,000 in debt at graduation. With annual tuition of about \$20,000, student debt reflects judicious use of loans; however, four years of graduate-level tuition may stand as an insurmountable barrier for those considering the profession. Scholarships not only make education affordable, for some students, they make pharmacy education possible.



Gifts from private and corporate donors for scholarships totaling more than \$400,000 are awarded annually to nearly 200 Pharmacy students. In addition, \$400,000 in internal college scholarships are awarded each year to 120 students.

However, as financial needs increase, existing scholarships provide funding for a smaller percentage of students. This challenge is not unique to the College of Pharmacy, but it may be more significant. As a university, Ferris prides itself on providing opportunity for students of all socioeconomic levels; in fact, "Opportunity" is one of the university's core values and is embraced by the College of Pharmacy. To ensure we are living our values,

available funding for scholarships must continue to grow through annual gifts and endowed scholarships.

Annual gifts designated as scholarships are immediately committed to academically outstanding students and those with demonstrated financial need. Scholarship funding, starting at \$1,000 annually, provides students with assistance needed to reduce the level of borrowing, allowing them greater time to focus on their education. Donors may designate a particular interest area or identify specific geographical areas for scholarship recipients. An annual scholarship represents an affordable method of supporting students as they pursue their careers.

Endowed scholarships provide a legacy of support into perpetuity for donors and are a lasting demonstration of their commitment to the college. Endowments are managed by the Ferris Foundation to provide needed scholarship support while ensuring the endowment continues to grow. A minimum gift of \$25,000 is required to establish an endowment that initially supports an annual award of \$1,000. As the endowment value increases, the annual awards grow in value, as well. University representatives are very well acquainted with either form of scholarship and can provide alumni considering gifts with additional information regarding the options.

Scholarships not only provide financial support to Pharmacy students, they also instill in the students a level of confidence, knowing that alumni preceding them have confidence in their ability to succeed.

---

"The Hagerman Scholar award allowed me to follow my plan to attend Ferris State University. Without it, I would have returned home and pursued my pharmacy education at a different college. The financial support is incredible, but so is knowing there are College of Pharmacy alumni supporting my efforts."

– Tiffany Agate  
Doctor of Pharmacy major

---

## ENRICHMENT

Goal: \$2 million

**PHARMACY FORWARD** includes creation of a \$1 million Enrichment Fund for the College of Pharmacy. While scholarship growth and building renovation are the campaign's focus, many opportunities exist for curricular enrichment. The fund will support a broad range of needs that enhance each student's experience, such as visits by recognized industry experts, laboratory equipment for research, audio/visual technology, emerging pilot projects that involve students and faculty, student travel and participation in professional organizations.

The education of Pharmacy students extends beyond the classroom, and funding available through the Enrichment Fund will ensure Ferris students are well-informed and understand practice issues. For example, the new Victor F. Spathelf Lecture Series will allow students in the colleges of Health Professions, Optometry and Pharmacy opportunities to interact with national industry leaders.



As Ferris moves purposefully to engage more students in various types of research, College of Pharmacy faculty members have developed projects that involve a partnership with students in discovery and scholarship. The Enrichment Fund will bring those projects to fruition by providing support that complements university resources and expands research activities.

Similarly, young faculty members developing research programs often are in need of startup funding to launch their research programs until external funding can be secured. The Enrichment Fund will provide the needed “spark” that ensures the college delivers on its recently adopted “teacher/scholar” model for all faculty.

Evolution of the Doctor of Pharmacy curriculum includes expansion of student activities as a required component. These co-curricular activities require student participation in events that may bring added costs. The Enrichment Fund will provide financial support for students engaged in activities that complement conventional studies.

Through the Enrichment Fund, the student experience will be enhanced both inside and outside the classroom. The unique opportunities made possible by fund support will demonstrate to each student the commitment and the pride that College of Pharmacy alumni have for their alma mater.

---

“A significant part of the reason I came to Ferris was the immediate availability of funding to begin my research and secure the equipment I needed. Without the start-up funding that was available, I would have delayed my research activities until an initial grant was received. This is demonstration that the College of Pharmacy believes in the teacher/scholar model.”

– S. Eric Nybo, Ph.D.  
*Assistant professor of Medicinal Chemistry*

---



## *PHARMACY FORWARD*

For more information on the *PHARMACY FORWARD* initiative or to make a gift, please contact The Ferris Foundation.

(231) 591-2365

**[ferris.edu/foundation](http://ferris.edu/foundation)**

Ferris State University College of Pharmacy

220 Ferris Drive

Big Rapids, MI 49307

(231) 591-3780

**[ferris.edu/pharmacy](http://ferris.edu/pharmacy)**