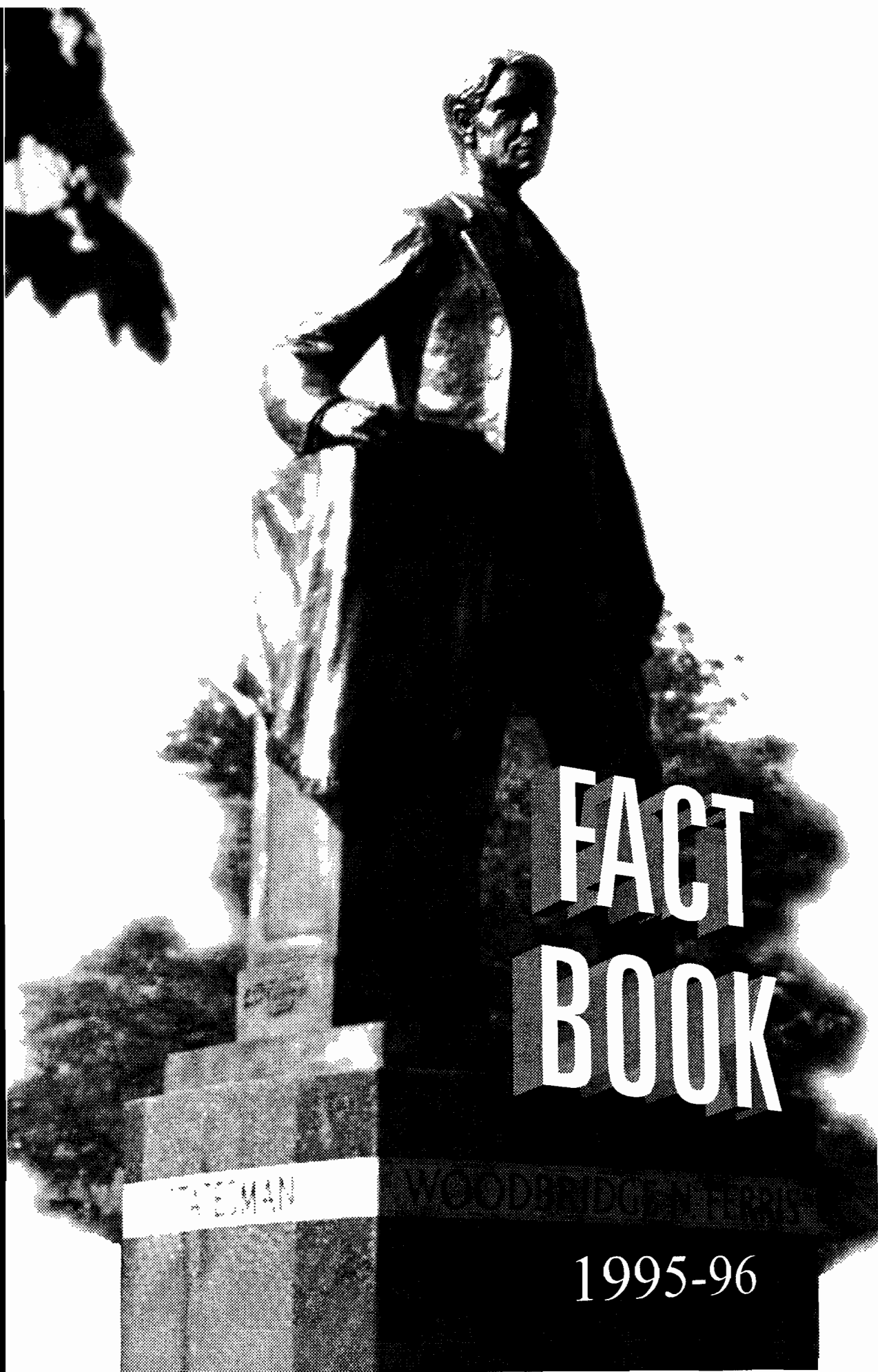


FERRIS STATE UNIVERSITY



FACT
BOOK

FISMAN

WOODBRIDGE FERRIS

1995-96

December 1995

Dear Colleague:

The *Ferris State University Fact Book 1995-96* is published for you, the students, faculty, staff, alumni, and friends of the University, who seek accurate information about Ferris. This project was conducted as a service to the University community by the Office of Institutional Studies in the Division of Academic Affairs. This fifth edition is a document that is designed to answer the most frequently asked questions about FSU.

It is with pleasure that we share the information with you. We encourage you to review this work and solicit your suggestions for improvement of future issues. A comment form is provided in the back of this book. As a result of your comments about the *Fact Book* last year, information has been added to the Students/Enrollment section and the Alumni section.

Our appreciation is extended to the many offices that assisted us with the development of the information, including Media Production's cover design. Special thanks go to Nina Worth for her assistance in putting together this *Fact Book*.

Carol L. Maki
Director, Institutional Analysis

Mitzi A. Day
Data Analyst

Ferris State University
Division of Academic Affairs
Office of Institutional Studies
Big Rapids, MI 49307
(616) 592-3801

TABLE OF CONTENTS

GENERAL INFORMATION

Statement of Mission	1
Facts and Figures:	
History/Campus Size/Academic Divisions/Location	2
Educational Programs/Accreditation and Approval	3
Admissions	4
Student Costs.....	5
Financial Aid/Housing	6
Placement/Computing and Telecommunications Facilities.....	7
Campus Media/Library and Instructional Services	8
Timme Library.....	9
Student Organizations/Athletics/Cultural Events.....	10
Lifelong Learning.....	11
Technical Transfer Center.....	12
Points of Interest	13
Gifts to the University	15
Ferris State University Calendar	16
Further Information	17
Educational Grants and Scholarships	18
MAGB Ferris State Faculty Honored	23
MAGB Student Recipients.....	24

STUDENTS/ENROLLMENT

Enrollment Listing of Resident Students by County	25
Enrollment Listing of Non-Resident Students by State	26
Total Headcount Enrollment, Fall 1965-1995	27
FYES Enrollment Per FTE Faculty.....	28
5-Year Headcount Enrollment Overview by College	29
Percent of Students by College	30
Comparative Enrollment Report by College	31
Enrollment by Age (Undergraduate Students Degree Seeking)	32
Enrollment by Age (Undergraduate Students Non-Degree Seeking)	33
Enrollment by Age (Graduate Students)	34
Enrollment by Age (First Professional Students)	35
Enrollment by Age Summary/Enrollment Summary.....	36
Total Headcount Enrollment Compared to FTE	37
SCH/FTE/FYES	38
Ethnic Distribution	39
Enrollment by Program (Allied Health Sciences)	40
Enrollment by Program (Arts & Sciences)	42
Enrollment by Program (Business)	44
Enrollment by Program (Education)	47
Enrollment by Program (Optometry/Pharmacy)	49
Enrollment by Program (Technology)	50

TABLE OF CONTENTS

DEGREES

Degrees Conferred by Program (Allied Health Sciences)	53
Degrees Conferred by Program (Arts & Sciences)	55
Degrees Conferred by Program (Business)	57
Degrees Conferred by Program (Education)	59
Degrees Conferred by Program (Optometry & Pharmacy)	61
Degrees Conferred by Program (Technology)	62
Degrees Conferred at FSU	64
Approved Programs.....	65

FACULTY/STAFF

Full-Time University Staff by Job Category & Sex	69
Part-Time University Staff by Job Category & Sex	70
Total University Staff by Job Category & Sex	71
Distinguished Teacher Awards	72

ORGANIZATIONAL CHARTS

Board of Trustees	73
Board of Trustees/Executive Division	74
Academic Affairs Division	75
Office of Academic Affairs	76
Academic Affairs Division/College of Allied Health Sciences	77
Academic Affairs Division/College of Arts & Sciences	78
Academic Affairs Division/College of Business	79
Academic Affairs Division/College of Education	80
Academic Affairs Division/Enrollment Services	81
Academic Affairs Division/ Lifelong Learning	82
Academic Affairs Division/Library and Instructional Services	83
Academic Affairs Division/College of Optometry	84
Academic Affairs Division/College of Pharmacy	85
Academic Affairs Division/College of Technology	86
Office of Vice President for Administration and Finance	87
Student Affairs Division	88
University Advancement Division and Marketing	89

TABLE OF CONTENTS

ALUMNI

Alumni Listing by State	91
Summary of Placement Activity for 1993-94 Graduates	92
Beginning Salaries for Associate Degree Graduates for 1993-94	93
Beginning Salaries for Baccalaureate Graduates for 1993-94	94
Alumni by College	95
Recipients of Alumni Awards.....	96

BUDGET

Summary of 1995-96 Tuition Fees & Room/Board.....	97
FY 1995-96 General Fund Operating Budget.....	98
Revenue Summary.....	99
Expenditure Summary.....	100

FACILITIES

Summary of Facilities Owned or Rented by FSU(General Fund)	101
Summary of Facilities Owned or Rented by FSU(Non-General Fund)	102
Ferris State University Campus Map	103



General Information

STATEMENT OF MISSION

Ferris State University's mission is to educate students in a number of applied technology fields and in other selected professional fields where there is sustained and significant career potential. Ferris educates its students to be employable and capable of professional growth, and further, to contribute to their profession and to a constantly changing, global society.

Our Students

We are committed to providing our students with strong curricula emphasizing practical, usable skills blended with a relevant general education foundation. This is accomplished in a caring environment with personal attention and close faculty-student interaction. We offer educational opportunity, with an "open door" admission component, to a diverse array of students, including high school graduates, transfer students from other colleges and universities, as well as some non-traditionally prepared students. We also foster positive co-curricular experiences leading to a fulfilling student life.

Our Programs

We are committed to keeping our educational programs and services responsive to the changing needs of manufacturing, business, health care, and other industries and professions which are critical to Michigan's economy. We achieve this by actively fostering beneficial relationships with those who employ our graduates.

Our Employees

We are committed to high standards of performance and pride in accomplishment, with the understanding that the strength of our organization is our people. We embrace the concepts of equal opportunity, affirmative action, and cultural diversity. We encourage teamwork, professional growth, acceptance of responsibility, and recognition for achievement.

Our Communities

We are committed to being good neighbors with full participation in community life and community service. We share local access to educational experiences, business opportunities, cultural events, leisure pursuits, and a variety of other activities with our communities.

Our State

We are committed to contributing to the economic vitality of our State by providing a well-trained and educated work force. We are actively involved in applied research relative to the transfer, application and management of technology, and its relationship to our society.

GENERAL INFORMATION

FACTS AND FIGURES

HISTORY

Ferris State University is named for its founder, Woodbridge N. Ferris (1853-1928), a respected Michigan educator and statesman who served two terms as the governor of the state of Michigan and was elected to the United States Senate.

Founded in 1884 as a private institution by Mr. Ferris, the institution became affiliated with the state of Michigan in 1950, was named Ferris State College in 1963 by the Michigan Legislature, and obtained university status in 1987.

The University's founding concept of providing students with marketable skills, though intended at the time for individuals who had lost their jobs following declines in the lumber and mining industries, remains relevant in today's fast-changing society. A distinctive combination of academic programs and a continuing tradition of career-oriented education have made Ferris a nationally recognized leader in preparing men and women for useful careers and enlightened citizenship in numerous health, technical, educational, business and other professional fields.

CAMPUS SIZE 600 acres

ACADEMIC DIVISIONS

- College of Allied Health Sciences
- College of Arts & Sciences
- College of Business
- College of Education
- College of Optometry
- College of Pharmacy
- College of Technology

LOCATION

The Ferris State University campus is located in Big Rapids, a west-central Michigan city of approximately 12,600 in the vacation-recreation region. The campus is readily accessible by the US-131 expressway and state highway M-20. Big Rapids is 55 miles north of Grand Rapids and within 200 miles of Chicago and Detroit.

In an effort to keep pace with changing needs and advances in technology, the Ferris campus has been updated and renovated over the years. The 600 acres of rolling hills along the western bank of the Muskegon River is dotted with 81 modern campus buildings.

EDUCATIONAL PROGRAMS

Ferris offers more than 100 educational programs through the Colleges of Allied Health Sciences, Arts and Sciences, Business, Education, Pharmacy, Technology, and Optometry.

These offerings lead to bachelor's and associate degrees and certificates and also include master's degrees in information systems management and career and technical education and doctorates in optometry and pharmacy.

For the most part, each college encompasses a cluster of related programs which are targeted to prepare students for specific careers. The colleges operate in facilities which have been specially designed and equipped to support their missions.

Ferris is a national leader in the development of the concept of laddering, which enables students to advance their careers by building on previous training. For example, an individual who has gained employment after completing a two-year degree may later seek career advancement by returning to Ferris and earning a bachelor's degree. This concept also permits students to readily transfer into Ferris programs.

ACCREDITATION AND APPROVAL

Ferris State University is accredited by the North Central Association of Colleges and Schools, and is certified by the State Approval Agency of the Department of Education and the Veterans Administration Michigan Department of Education for the education and training of veterans to attend Ferris under the provisions of Title 38, United States Code.

The National Accreditation Council for Environmental Health Curricula of the National Environmental Health Association has accredited the Industrial and Environmental Health Program.

The Commission on Accreditation of Allied Health Programs has accredited the Health Information Sciences and Respiratory Care Programs. The Medical Laboratory Technician and Medical Technology programs are accredited by the National Accrediting Agency for Clinical Laboratory Sciences. The Radiography and Nuclear Medicine Technology Programs are accredited by the Joint Review Committee on Education in Radiologic Technology and Joint Review Committee on Education in Nuclear Medicine Technology.

The American Dental Association Commission on Dental Accreditation has accredited the Dental Hygiene and Dental Technology programs.

The associate degree nursing program is accredited by the Michigan State Board of Nursing. The Bachelor of Science in nursing program is accredited by the National League for Nursing.

The Accountancy program is accredited by the State Board of Accountancy.

The American Bar Association has accredited the Legal Assistant program.

GENERAL INFORMATION

The Optometry Doctoral (O.D.) Program and the Optometric Technician Program are accredited by the Council on Optometric Education. The Opticianry Program is accredited by the Commission on Opticianry Accreditation.

The Pharmacy Program is accredited by the American Council on Pharmaceutical Education.

The Surveying Program is accredited by the Accreditation Board for Engineering and Technology.

All Teacher Education Programs are approved by the Michigan Department of Education/ State Board of Education.

Construction Management is accredited by the American Council for Construction Education.

Criminal Justice - Specialist is accredited by Michigan Law Enforcement Officer Training Council. The Criminal Justice - Corrections Officer program is accredited by Michigan Corrections Officer Training Council.

Tot's Place is accredited by the State of Michigan Department of Social Services.

The Social Work program is accredited by the Council on Social Work Education.

ADMISSIONS

Ferris State's diverse curricula allows it to maintain the tradition of admitting most mature, serious-minded applicants. Admission to certain programs must depend upon consideration of the applicant's qualifications for such a program. Specific program requirements are listed in the University catalog.

GENERAL INFORMATION

STUDENT COSTS

The average annual cost for a Michigan resident to attend Ferris (based upon 1995-96 rates), including tuition, room and board, fees, and estimated academic and personal expenses, is \$9,810.

1995-96 Costs	Semester	Year
Undergraduate (Michigan resident)		
Tuition (12-16 credit hours)	\$1,766.00	\$3,532.00
Room and Board (7-day plan)	\$2,249.50	\$4,499.00
Sub Total	\$4,015.50	\$8,031.00
Books and Supplies (estimate)	\$313.00	\$626.00
Personal Expenses (estimate)	\$560.00	\$1,120.00
Refundable Fees	\$16.50	\$33.00

Michigan Undergraduate Total Expenses (estimated)	\$4,905.00	\$9,810.00
--	------------	------------

Undergraduate (non-resident)		
Tuition & Fees	\$3,593.00	\$7,186.00

Part-time Student (1-11 credit hours)	
Michigan Tuition	\$148 per credit hour
Non-Resident Tuition	\$298 per credit hour

Graduate Student	
Michigan Tuition	\$190 per credit hour
Non-Resident Tuition	\$381 per credit hour

Professional School Tuition (Doctor of Optometry & Doctor of Pharmacy)		
Michigan Resident	\$3,689.00/semester	\$7,378.00/year
Non-Resident	\$7,458.50/semester	\$14,917.00/year

NOTE: The tuition for fourth year professional students in the Doctor of Optometry program is \$11,067 for Michigan Residents, \$22,134 for Non-Residents. The year runs all three semesters.

Family Apartments	
One Bedroom	\$351 per month
Two Bedroom	\$374 per month
Two Bedroom (new)	\$439 per month
Three Bedroom (new)	\$493 per month

Alternate Meal Plan		
Room and Board (12 meal plan)	\$2,139.50	\$4,279.00
*Flex Meal Plan	\$2,100.00	\$4,200.00
*(Pickell & Miller Hall residents only)		

GENERAL INFORMATION

FINANCIAL AID

More than 65 percent of the students presently enrolled at Ferris State receive some type of financial aid through federal, state and Ferris programs, including scholarships, grants, loans and student employment. Ferris State University awards more than \$40 million in student aid annually.

Most financial aid is based on need and is intended to assist students whose families cannot pay all or perhaps any of the college costs. Information on financial aid programs may be obtained by contacting the Office of Scholarships and Financial Aid.

HOUSING

Ferris State University residence halls provide students with convenience and the opportunity to pursue their studies in an environment that supports the academic mission of the University. Various halls are designed to cater to specific interests and needs. Among them are halls for non-traditional students, a substance free hall, smoke free hall, private room options, apartment style hall, and the First Year Challenge Hall. All residence halls offer challenge and a variety of growth experiences including considerable employment opportunities.

Individual residence halls offer a variety of recreational facilities/opportunities/diversions. Athletic equipment may be available for checkout from the front desk. Some halls own weightlifting equipment and/or have an exercise room. Other common items include pool tables, ping-pong tables and video games.

Special services within the halls include mini-computer labs and individual student rooms that are data connective, cable television, RHA movie channel, washers and dryers, cooking capabilities, direct long distance dialing, referral desk and night security. Social, recreational and educational programming are routinely provided.

The halls are supervised by a full-time live-in professional residence hall director. This person is responsible for overseeing all aspects of day to day life in the hall. Resident advisors are part-time student staff who live on the floors with the students. They design programming, help solve disputes, provide referrals and enforce University policies.

The University has a total of 376 apartments which are divided among three complexes; East Campus, South Campus and West Campus. These apartments provide students with close-to-campus, affordable housing.

East and South Campus consist of 140 one-bedroom and 36 two-bedroom apartments. These apartments provide housing for both families and single students.

The West Campus apartments consist of 150 two-bedroom and 50 three-bedroom unfurnished, newly constructed townhouse apartments. These apartments are designed specifically for student families. All apartments have the bedrooms upstairs, and full basement downstairs, with the living room and kitchen on the main floors. The beautifully landscaped area provide the students with a family neighborhood type atmosphere.

Two-bedroom and three-bedroom handicapped accessible townhouses are also available. In these apartments, the entire apartment is on the main level, with a full basement.

HOUSING CONT.

All apartments on campus provide computer network connections to allow students the ability to access the Internet, the library and mainframe. Ferris' telephone and cable TV are also provided in each apartment.

In October a Community Center was completed on West Campus. The Community Center houses a computer lab, meeting rooms and a large multi-purpose room where educational, social and children programs will be held.

Students living on campus are able to eat in any of Ferris' 4 dining units. They are allowed to choose from 2 traditional all you can eat cafeterias (South Dining & Westview in the Rankin Center) and 2 Food Courts (Masselink and Southwest) on campus. A minimum of 2 entrees are served in the traditional cafeterias. Up to 50 entree's are offered in the food courts, where the dine-in or take-out option is available.

PLACEMENT

A Ferris State University education is supplemented by effective career planning resources and placement services. The career planning and placement office serves graduates searching for career employment and maintains a Career Information Center to assist students exploring career options and employment resources. Over 175 employer recruiting visits are made to campus each year for the purpose of interviewing candidates for job opportunities. Annual surveys of graduating students show that nine out of ten employed graduates are in occupations related to their major field of study at Ferris, 92% of graduates are working or continuing education full time and the 93-94 placement report shows three-fourths of all listed curriculums have placement rates of 90% or better.

COMPUTING AND TELECOMMUNICATIONS FACILITIES

All residence hall rooms and apartments at Ferris State University have access to local and world-wide computer networks. Every residence hall is equipped with a small computer lab. In addition, there are large computing laboratories available to students in various locations on the Ferris State University campus. A high speed, wide area network provides broad campus access to labs, the Internet, and other computing resources such as Timme Library. Also available for student, faculty, and staff use are a substantial number of mainframe, mid-range, and microcomputer systems. Instructional Technology provides media support for classroom instruction and facilitates distance learning activities to off-campus locations. Telecommunications offers a variety of voice, video and data services. The University's IBM 3090 200E mainframe computer, housed at the Computer Center, supports on-line processing for academic and administrative users.

GENERAL INFORMATION

CAMPUS MEDIA

Ferris offers students a variety of media, including a campus newspaper and local cable system (channel 7).

The Torch, which is published twice weekly, informs students of University news, events, and other related campus issues. FSU-TV Cable 7 serves the campus and community with educational and public service television programming.

The *FYI* is an internal newsletter published weekly for faculty and staff, and the *Crimson & Gold*, published three times yearly, is aimed at keeping alumni and other key audiences informed. Some of the colleges and programs on campus also publish their own alumni publications.

LIBRARY AND INSTRUCTIONAL SERVICES (LIS)

Serving all areas of the University, Library and Instructional Services (LIS) offers access to more information in varying formats from different sources on site and around the world than ever before. Graduating from Ferris with a knowledge of how to find necessary information to solve problems is critical to becoming a contributing professional and citizen in a continuously changing global, pluralistic and technological information-based society.

The University library system, which consists of the Abigail S. Timme Library and a branch facility, the Health Sciences Library, houses a collection approaching three quarters of a million books, periodicals, Michigan and U.S. government documents, research reports, audio-visual and other materials. The libraries' holdings are integrated by format and linked electronically through the Online Public Access Catalog (OPAC). The local area network (LAN) hosts an expanding collection of locally loaded commercial databases. Searching these sources is an option from residence halls, microcomputer labs and offices located around campus.

The Timme Library is a depository for U.S. Bureau of Census and State of Michigan publications, and shares this status with Northwestern Michigan College for other federal documents. It also is designated a Patent and Trademark Depository Library. The Timme Library houses the campus libraries' media collection and microcomputer/Internet access in an area called the Individualized Learning Center (ILC). The University Archives contains materials related to Ferris State University's history as well as official records and faculty publications.

Electronic access to the University's library holdings and those of a growing number of other institutions in the northwest quadrant of lower Michigan is made possible through Ferrisnet, which was established to foster interlibrary cooperation. In addition to participating in the MichiCard Program the University provides Internet access. As a subscriber to OCLC and its document delivery system, the Ferris libraries are connected to more than 20,000 national and international libraries/information centers whose resources are available through Interlibrary Loan and reciprocal agreements.

**FERRIS STATE UNIVERSITY
TIMME LIBRARY
Fall, 1994**

Holdings

Monograph Titles	186,049
Serial Titles	5,440
Periodical Subscriptions	3,976
Physical Volumes	238,894
Items Barcoded for Circulation	362,947
Microforms (pieces)	3,259,988
U.S. Documents	64,058
Cartographic Materials	6,873
Miscellaneous Media (pieces)	66,473
Manuscripts (linear feet)	836.9

**Services
Averaged by Week**

Hours Open (with services)	83
Hours Open (additional hrs as study space)	4
Attendance Main Library	3,617
Attendance Health Science Library	848
Reference Transactions	661
Online Database Searches	0
CD-ROM Database Searches	2,680
Group Presentation	5
Interlibrary Borrowing**	1,430
Interlibrary Lending**	2,627

NOTE: ** These statistics are annual instead of weekly to be consistent with last year's information

Source: FSU Library

GENERAL INFORMATION

STUDENT ORGANIZATIONS

Student related issues receive a great amount of attention from the student affairs department. Included in the Student Affairs Division are the following units: Rankin Student Center, Birkam Health Center, Counseling Center, Minority Affairs, Student Judicial Services, Student Leadership and Activities, Career Planning and Placement, University Recreation and Orientation.

To help students grow socially and culturally, as well as academically, Ferris State has more than 150 organizations on campus including 60 related to instructional programs. Another 23 are related to extracurricular interests. The Interfraternity Council oversees 15 social fraternities, and the Panhellenic Council oversees six social sororities. There are seven honor societies, ten professional fraternities and recognition groups and two service organizations. There are also 12 religious organizations.

ATHLETICS

The Ferris State University Bulldogs are members of the National Collegiate Athletic Association (NCAA). FSU varsity teams compete in the Central Collegiate Hockey Association (NCAA Division I) in ice hockey, the Midwest Intercollegiate Football Conference (NCAA Division II) in football and the Great Lakes Intercollegiate Athletic Conference (NCAA Division II) in basketball.

Ferris students participate in 12 varsity sports.

Annually, more than half of the student body participates in organized recreational sports activities, including extensive intramural and club sport programs. Other students participate in informal recreation activities.

Ferris provides ample facilities for athletics and recreation, including a field house with pool, weight room, basketball and volleyball courts and indoor track; a golf course; a sports complex including full and half-size ice rinks and volleyball and wrestling facilities; racquetball courts and indoor and outdoor tennis courts.

CULTURAL EVENTS

Concerts by Ferris State Music Center organizations such as the West Central Concert Band, Chamber Orchestra, Jazz Ensemble, Concert Choir, and Ferris Wheels (men's glee club), and productions of Ferris Theatre are augmented by appearances of professional music, drama and dance organizations and other performing arts groups.

The Ferris Art Gallery features exhibits of paintings, prints, photography, sculpture and crafts, as well as special exhibits featuring leading Michigan artists, FSU faculty and students.

The Arts and Lectures Committee offers a schedule of lectures, concerts and films, while Entertainment Unlimited presents pop/rock and comedy concerts and other events of a contemporary nature.

Ferris also hosts the annual "Festival of the Arts," a month-long celebration featuring visiting artists, writers, arts presentations, workshops, lectures and other cultural events.

Four outdoor sculptures are on display on campus: "I'm Late," an abstract metal work; a bronze centennial memorial statue of founder Woodbridge N. Ferris; a large welded steel Bulldog, a rendition of the FSU athletic mascot; the World Sculpture. A bust of Ferris is on display in the Starr Educational Center in the G. Mennen Williams Auditorium lobby.

The Center for International Education's "International Festival of Cultures" brings the world to Big Rapids with students, faculty, staff, and community members presenting cultural displays, performances, and food of more than fifty countries worldwide.

LIFELONG LEARNING

Lifelong Learning provides a wide range of continuing education and public service programs, conducted both for credit and non-credit, enabling many adults and youths to keep abreast of changes in their field of interest. Ferris offers a variety of conferences, institutes, seminars and workshops ranging from one day to three weeks in length. Opportunities for participation in nationwide teleconferences and telecourses are also provided.

The Evening College program is offered for area residents and others unable to attend college on a full-time basis who wish to pursue a degree or take classes for personal growth. Lifelong Learning provides logistical support for Ferris summer school programs.

Off-campus degree programs in selected curricula are offered at strategic sites throughout the state and are designed to meet the needs of the adult learner. Ferris off-campus programs are offered in cooperation with the academic colleges through the main campus and Regional Centers in Grand Rapids, Traverse City and Flint.

Business, industrial and labor education needs are served through customized training seminars. Faculty/trainers have industry-specific experience, offering valuable resources to training projects. Grant programs can provide assistance to qualifying industries.

Lifelong Learning serves a large number of people in its public service role. The Business Development Center, the Senior Employment Program, and the Learning/Nutrition Project activities all exist to help their constituents in a variety of ways.

GENERAL INFORMATION

TECHNOLOGY TRANSFER CENTER

Technology Transfer Center (TTC) is a department of the College of Technology which develops technical services and training opportunities for clients of the University. Services available through the TTC mirror the technical programming of the major degree programming areas within the College of Technology. Assistance is provided on a project-by-project basis through three TTC service divisions; Technical Services, Technical Training, and Entrepreneurial Services.

The skills and knowledge of College of Technology faculty are one reason TTC has served as a respected provider of essential services to over 900 manufacturing and technical service sector companies since 1984. The expertise of faculty, staff and senior level students are utilized to assist Michigan's manufacturing and commercial-industrial community. TTC technical services include quality improvement, cost reduction programs, on-site plant floor problem solving, plant layout design for synchronous manufacturing, and project management. TTC custom technical training services include (but not limited to) plastics technology, building and highway construction quality, quality systems, welding technology, machine tool theory and practice, and CAD design. TTC also specializes in the development of industry-specific training partnership programs through its highly successful Training Institute program. Partnerships between TTC and state agencies and associations include: Michigan Asphalt Paving Association, Michigan Mineral Resources Association, Michigan Department of Transportation, West Michigan Office Furniture Council, Greater Grand Rapids Manufacturers Association, Mecosta County Chamber of Commerce, Industrial Technology Center (Ann Arbor), Midwest Manufacturing Technology Center (NIST), Research and Technology Institute (Grand Rapids), and West Central Michigan Defense Procurement Center. TTC also has national partnerships with the Air Conditioning Contractors of America and the Management Association of Private Photogrammetric Surveyors.

Technology Transfer Center is located at 1020 East Maple Street near the Big Rapids Industrial Park, and at the Applied Technology Center in Grand Rapids, Michigan. Phone: 616-592-5800, Fax: 616-796-1448.

POINTS OF INTEREST

Alumni Building (1929) - The oldest building on campus, it contains administrative offices, recreation facilities, and faculty offices and classrooms for the College of Arts and Sciences.

Automotive Center (former Technical and Applied Arts Center) (1956) - Comprises the instructional and lecture facilities for automotive services, automotive body, automotive machine, and auto and heavy equipment management. Several of the automotive programs offer associate and bachelor degrees.

Business Building (1970) - Houses the auditorium, classrooms and offices of the College of Business. Extensive terminal and mainframe computer facilities include one of the state's largest "library concept" microcomputer laboratories used for educational purposes.

Bishop Hall/College of Education (1967) - Built as a residence hall, it was remodeled in 1986 to house the College of Education administrative offices and classrooms as well as such programs as Collegiate Skills and Intensive English.

Construction Technology Center (1962) - Provides lecture facilities for the energy systems technology and construction engineering technology program areas.

Creative Arts Center - This building houses the studios, classrooms, and faculty offices needed for the Studio Arts in the College of Arts and Sciences.

Ewigleben Sports Complex/Ice Arena - Comprises two indoor ice rinks and a recreational wing with facilities for intercollegiate hockey, recreational hockey and skating, basketball, and volleyball, all completed in 1975. An addition completed in 1981 includes a combatives room, fitness and sports medicine facilities and a mini-arena.

Heavy Equipment Technology Building (1987) - A 52,000-square-foot building accommodating students in the heavy equipment and auto programs. The HET building is the largest facility in the country dedicated to training heavy equipment and heavy duty engine technicians.

Holiday Inn Hotel and Conference Center (1993) - The facility is located adjacent to the Katke Golf Course and overlooks the campus. The complex houses 16,772 square-feet of meeting facilities, 118 guest rooms, banquet facilities and a restaurant. The conference facilities are used for continuing education activities, conferences and workshops.

Instructional Resource Center - contains large lecture halls, distance learning room, and media services for the whole campus.

Katke Golf Course (1975) - An 18-hole golf course on campus, it is used for instructional, athletic and recreational purposes.

Pennock Hall/College of Optometry (1968) - Built as a residence hall, it was renovated in 1977 to serve as the permanent home for the College of Optometry.

Pharmacy Building (1972) - Designed to house all operations of the College of Pharmacy, including specialized laboratories and the model pharmacy, and also contains an antique pharmacy exhibit.

GENERAL INFORMATION

Plastics Engineering Technology Center (1987) - Built with funds provided by the plastics industry, the center offers hands-on training in plastics processing, tool design and tool building, quality control and material and product testing.

Racquet Facility (acquired in 1980) - The facility contains tennis and racquetball courts and weight lifting and aerobics facilities for intramural and intercollegiate athletics and is open to the general public as well.

Rankin Center (1957) - Remodeled and updated in 1987, it is the hub of campus, housing the James L. Lundberg Bookstore, recreational facilities, offices for the student newspaper, student government and various other student organizations, catering/booking offices and the Ferris Art Gallery. On the administrative side, there are offices for minority affairs, student judicial services, student activities, career planning and placement, personal counseling, the vice president for student affairs and the dean of student life. Additional services include three dining facilities, meeting rooms and a large ballroom/banquet room.

Science Hall - Originally built in 1956 and remodeled and expanded in 1967, this building provides teaching auditoria, classrooms and science laboratories for the College of Arts and Sciences. It also houses the Rawlinson Observatory and the Roger Card wild animal collection. A major renovation, currently underway, will be completed in 1997.

Spathelf Center for Allied Health (1979) - This four-level structure contains the specialized classrooms, laboratories and offices for the students, faculty and administration of the College of Allied Health Sciences.

Starr Educational Center (1961) - FSU's largest general classroom building, Starr was built in 1961 and completely renovated in 1995. It provides classrooms for the College of Arts and Sciences, Humanities Department offices, and student lounges and study rooms. It also houses the G. Mennen Williams Auditorium, which seats 1,700.

Swan Technical Building (1966) - This five-story academic structure houses the majority of programs in the College of Technology, including the electronics, construction, graphic arts and manufacturing departments, along with CAD-CAM labs serving more than 2,000 students, automation labs and a resource center.

Technology Transfer Center (TTC) (donated in 1984 by Hitachi Metals International) - This 9,000-square-foot building located off campus on Big Rapids' east side, contains a fully equipped machine shop, computer laboratory including computer aided design stations, classrooms, a conference room and offices. (see separate section on the Center's function)

Timme Library - Located at the center of campus, the 57,000 square foot, three-story Timme Library houses approximately 500,000 volumes with collections emphasizing health sciences, business and technology. There is an increasing array of electronic information sources and expert faculty and staff to assist the patron - student, faculty or community resident.

Tot's Place (instituted 1987) - Located on the first floor of Bishop Hall, it is the laboratory for the child development program. Tot's Place provides child care for children of students and faculty as well as Big Rapids community residents.

GIFTS TO THE UNIVERSITY

Directed by the Ferris faculty and staff, private giving to the University in fiscal year 1994 totaled \$2,085,913 including cash contributions of \$1,000,131 and in-kind gifts of \$1,085,782.

Contributions may be made in many ways:

- Phoenix Society: \$100,000 in cash or in-kind gifts or \$150,000 in deferred giving (individuals or companies);
- Phoenix Society Associates: \$50,000 cash or \$75,000 in deferred giving (individuals only);
- Presidents Club: \$10,000 in cash or in-kind gifts payable over a 10-year period, or a \$35,000 life insurance policy, charitable remainder trust or by other deferred arrangements;
- Endowment Society: Ferris is named as a beneficiary in estate plans;
- Fund for Excellence annual unrestricted giving: Century Club (\$100-\$499), University Club (\$500-\$999), Woodbridge N. Ferris Society (\$1,000+);
- Annual giving clubs for gifts restricted to an academic area or program: Lifetime Dean's Club (\$2,000 or \$500 per year for four years), Dean's Club (\$500+), Dean's Club Associates (\$100-\$499);
- Bulldog Club: Gifts designated to support athletic programs. Top Dog (\$1,000), Coach (\$500), Captain (\$250), Booster (\$100), Friend (\$50);
- Annual gifts under \$100;
- Gifts from parents and alumni;
- Gifts from business and industry, including cash, equipment and materials, and matching of employee financial gifts;
- Gifts and grants from foundations;
- Gifts in memory or in honor of individuals;
- Matching gifts (companies or corporate foundations match their employees' gifts to Ferris from a one-to-one to a four-to-one ratio).

GENERAL INFORMATION

FERRIS STATE UNIVERSITY CALENDAR

Fall Semester, 1995-96

Aug. 23	Orientation
Aug. 24-25	Registration
Aug. 28	Classes begin
Sept. 4	Labor Day - no classes
Sept. 5	Classes resume
Oct. 18	Mid-term Warnings due
Oct. 30	Last day for approved unqualified W grade
Nov. 23	Thanksgiving recess begins
Nov. 27	Classes resume
Dec. 8	Last day of classes
Dec. 11	Examination week begins
Dec. 15	Last day of examination week
Dec. 16	Fall Commencement

Winter Semester, 1996

Jan. 3	Orientation
Jan. 4-5	Registration
Jan. 8	Classes begin
Jan. 15	Martin Luther King Day - no classes
Jan. 16	Classes resume
Feb. 28	Mid-term Warnings due
Mar. 2	Spring recess begins
Mar. 11	Classes resume
Mar. 18	Last day for approved unqualified W grade
Apr. 4	Easter recess begins
Apr. 8	Classes resume
Apr. 26	Last day of classes
Apr. 29	Examination week begins
May 3	Last day of examination week
May 4	Spring Commencement

Summer Semester, 1996

May 13	Orientation
May 13	Registration
May 14	Classes begin
May 27	Memorial Day - no classes
May 28	Classes resume
July 4	Independence Day recess - no classes
July 8	Classes resume
Aug. 8	Last Day of Summer Semester Classes

FURTHER INFORMATION

Address all correspondence to the appropriate individual and department at: Ferris State University, 111 W. Knollview Drive, Big Rapids, MI 49307.

The telephone number for the Ferris State switchboard is (616) 592-2000, and the telephone operator can assist you. Most colleges, departments and offices also have their own numbers. Some frequently called numbers are listed below:

Academic Deans Offices

College of Allied Health Sciences.....	592-2269
College of Arts and Sciences	592-3661
College of Business.....	592-2422
College of Education.....	592-3648
College of Optometry.....	592-3703
College of Pharmacy	592-2254
College of Technology.....	592-2898

Student Services

Admissions	592-2100
Assessment Services & Enrollment Research	592-3628
Business Office.....	592-2125
Career Planning/Placement Services.....	592-2685
Financial Aid	592-2110
Orientation	592-2105
Registrar	592-2790
Residential Life (Housing)	592-3745

General

Alumni Relations.....	592-2346
Athletic Department	592-2860
Library.....	592-3602
Lifelong Learning	592-2340
Public Safety.....	592-5000
Rankin Center.....	592-5916
Student Activities	592-5936
University Advancement.....	592-3815

GENERAL INFORMATION

EDUCATIONAL GRANTS AND SCHOLARSHIPS

FEDERAL The Federal Pell Grant
 The Supplemental Educational Opportunity Grant

STATE The Michigan Educational Opportunity Grant Program
 The Michigan Adult Part-Time Grant Program

INSTITUTIONAL

Woodbridge N. Ferris Scholarship Program:

- Founder's Scholarship
- President's Scholarship
- Dean's Scholarship
- Ferris Academic Opportunity Scholarship
- Valedictorian/Salutatorian Award
- Kelso Battle Scholarship
- Community College Transfer Scholarship

Institutional Grants and Scholarships:

- Admin. Mgmt. Society Junior Standing Achievement Scholarship
- Alumni Scholarship
- Amer Fed of State, County & Municipal Employees
- American College of Health Care Admin's
- American Society for Quality Control Scholarship
- Andersen Consulting Exc. in Education
- Architectural Building Products Scholarship
- ASHRAE - American Society of Heating, Refrigeration and Air Conditioning Engineers
- Tommy Armour Golf Company Scholarship
- The Blanche E. Arnold Scholarship
- Athletic Grants
- Bausch & Lomb "Contact with the Future" Educational Travel Grant
- Bausch and Lomb Excellence in Academic Achievement Scholarship
- Helen Bennett Memorial Award
- Ken Betz Automotive Service Scholarship
- Owen Bieber Scholarship
- Thomas Bingman Memorial Scholarship
- George Marcus Bowlby Scholarship for Non-traditional Students
- John & Sue Bradac Criminal Justice
- Butler Paper Scholarship
- Cascade/Paragon Scholarship
- John Celestino Endowed Scholarship
- Brian Chapman Memorial Professional Golf Management Scholarship
- The Elizabeth Claucherty Endowed Scholarship
- College of Business Memorial Scholarship Fund
- The Orrin B. Davenport Scholarship
- Stanley J. Dean Memorial

EDUCATIONAL GRANTS AND SCHOLARSHIPS

INSTITUTIONAL, CONT.

The William Deck Scholarship Fund
Delta Dental Fund
The William E. Dengler Memorial Pharmacy Scholarship
Dental Hygiene Alumni Scholarship
Wm. J. Donahue Vocal Music Endowment
DOW-Industrial Chemistry Technology Scholarship
Jas Draper & Keith Treiber Dental
Draugalis Endowment
Gregory Dreuth Memorial Scholarship
EDS Automotive/Heavy Equipment Management
Ewigleben International Student Endowed Scholarship
The Dean and Mrs. Ben Fairman Scholarship Fund
The Federated Garden Clubs of Michigan Scholarship
Mary C. Feindt Surveying Scholarship
Ferris Grants-in-Aid
Phil Flanders Plastics Brotherhood Association Scholarship
The C. Jerry Ford and Mary E. Ford Memorial Scholarship
FSC Outstanding Minority Student
FSC Transfer Student
FSU Dining Service Scholarship
FSU Women's Intercollegiate Athletics
Richard Faber Loan
Farmers Insurance Group
Fenn & Associates
W. N. Ferris Scholarship
The Ernie Fuller Scholarship
Seymour Galina Grant
Debbie Garner Memorial Scholarship
General Mills "Hungry Minds"
Golf Manufacturers and Distributors Association Scholarship
The James A. Gould Memorial Pharmacy Student Assistance Fund
The Richard G. Hallisy Student Assistance Fund
H. S. Die & Engineering, Inc.
Charles Hampton Memorial Endowed Scholarship
Handicapped Student Scholarship
Mary Ann Hashimi Endowment
Head Golf Scholarship
Alan A. Heisler Memorial Scholarship
The Kurt Hellthaler Endowed Memorial Ophthalmic Dispensing Award
Hoexum Scholarship
Orville C. Hoffman, Jr. Endowed Scholarship
George N. Holcomb Memorial Scholarship Fund
Ansel C. Hook Memorial

GENERAL INFORMATION

EDUCATIONAL GRANTS AND SCHOLARSHIPS

INSTITUTIONAL, CONT.

John & Diana Hoyt Plastics Technology
Hurst Mechanical, Inc./Refrigeration Engineering, Inc. Scholarship
Independent Printing Co., Inc. Annual Scholarship
Ingersoll-Rand Heavy Equipment Technology Scholarship
Instrument Sales and Service Scholarship
Intensive English
Chas. Jehnsen Heavy Equipment Endowment
The Jerry Jourdain Endowed Memorial Scholarship
W. C. Judson Endowed Scholarship
Gordon Kamstra Memorial Endowed Scholarship
Kariis K. Kazerovskis Endowment
The Fred W. Kellogg Scholarship
Korean Students Scholarship
The Maude Korstange Scholarship
Richard S. Labroff Endowed Scholarship
Jack and Karen LeBarre Scholarship
Lewis & Lewis Surveying Scholarship
Thomas F. Love Endowed Swimming Scholarship
The Ruby MacNeill Endowed Memorial Scholarship
Donald and E. Lyle Magee Scholarship
Dr. Vijay Mahida Surveying Scholarship
Minnie Mould Marsh Endowment
Stephen Edward Martin Memorial Award
The Jack Marvel Surveying Scholarship
The Julia B. McCormick Scholarship Fund
Michigan Association of Commercial Dental Labs Scholarship
Michigan Auto Parts Association Scholarship
Michigan Construction Equipment Dealers Association Scholarship
Michigan Optometric Association Auxiliary Scholarship
Michigan Society of Registered Land Surveyors Scholarship
Mid-Michigan Engineering & Survey Co., Inc. Scholarship
Colonel Charles A. Mount and Dorothy Mount Memorial Scholarship
Jack M. Newcomb
The Nordman Foundation Scholarship
Northamerican Heating and Air Conditioning Association Scholarship
Outer Drive Hospital Auxiliary Scholarship
Warren C. and Beverly A. Parker Scholarship Endowment
The Perialas Challenge
PGA Foundation Scholarship for Minority Students
Prakken Scholarship
The David P. Prior Scholarship
The Progressive Engineering Consultants of Grand Rapids, Inc. Scholarship
The Allen Puterbaugh Scholarship

EDUCATIONAL GRANTS AND SCHOLARSHIPS

INSTITUTIONAL, CONT.

Mylo Ragan Endowed Scholarship
The Rautiola/Nartron Tennis Scholarship
Geff Reinke Endowed Scholarship
Vincent J. Salierno Scholarship
Joseph D. Sasaki Scholarship Fund
Donald G. Saum Surveying Scholarship
Bill & Lynne Scheible
Sarah Shell Scholarship Award
Mike Shira Health Systems Management Scholarship
Silhouette Optical Student Grant Program
Sloan Transportation Products Heavy Equipment Scholarship
John R. Smith Memorial Endowed Leadership Scholarship
S. Fl. Society of Plastics Engineers
Victor and Mercedes Spathelf Scholarship
Special Ability-Based Scholarship
SPE South Florida Section Scholarship
Harry S. Swartz Pharmacy Administration Award
Surveying Advisory Committee Scholarship
Walter J. Stevenson Scholarship Fund
James Stewart Memorial Fund Scholarship
Ronald Keith Strohkirch Memorial Scholarship
George Storm Memorial Tech'l Teacher Ed.
Anne Szabunia Memorial Scholarship
Fred E. Taylor Endowed Scholarship
Jon C. and Margaret A. Taylor Student Assistance Fund
Tenth Congressional District Scholarship
Toyota Higher Ed Program
Trans-matic Manufacturing
C. Alan Tressler Memorial Scholarship Fund
Daniel Tyler Scholarship
Upjohn Biotechnology Control Scholarship and Internship
Upper Division Academic Scholarship
Upper Peninsula Mi Pharmacy Association Scholarship
Urban Land Consultants Scholarship
Varilux II Student Grant
The Helen Ferris Vartan Scholarship Fund
Vision Service Plan Academic Achievement
Vision Service Plan Scholarship
WBDC Incorporated Scholarship
The Dr. Andrea L. Warfield Memorial Endowed Scholarship
Wayne County Society of Optometrists Scholarship

GENERAL INFORMATION

EDUCATIONAL GRANTS AND SCHOLARSHIPS

INSTITUTIONAL, CONT.

West Central Chapter of the Michigan Society of Registered Land
Surveyors Scholarship
West Michigan Dental Society
Dean A. Whitehead Memorial Scholarship
Robert F. Williams Scholarship
Wyatt Cafeterias Endowed Scholarship Fund

Source: 1993-1995 School Bulletin/Board-Approved Scholarship Funds List (Board of Control Office)

MICHIGAN ASSOCIATION OF GOVERNING BOARDS

The Michigan Association of Governing Boards (MAGB), an organization of the governing bodies of the thirteen State-supported colleges and universities of Michigan, has, since 1982, been hosting an awards convocation and dinner to honor students and faculty of member institutions for scholarly activity and public service.

Ferris State Faculty Honored Include:

1982	Gerald E. Lowther	Optometry
1982	Richard A. Santer	Arts & Sciences
1983	Herbert L. Carson	Arts & Sciences
1983	Nancy P. Uniacke	Optometry
1984	Everett J. Nienhouse	Arts & Sciences
1984	Ann Marie Remp	Business
1985	Ada Lou Carson	Arts & Sciences
1985	Robert E. Friar	Arts & Sciences
1986	Mary L. McCorriston	Arts & Sciences
1986	Michael E. Ryan	Arts & Sciences
1987	Charles R. Hurt	Arts & Sciences
1987	Mark L. Pletz	Optometry
1988	Robert J. Krueger	Pharmacy
1988	Rose Ann Swartz	Business
1989	Richard Pisacreta	Arts & Sciences
1989	Katherine Manley	Education
1990	Robert C. Ferguson	Arts & Sciences
1990	J. James Saladin	Optometry
1991	John P. Caserta	Arts & Sciences
1991	Gary C. Horn	Arts & Sciences
1992	Phillip Sterling	Arts & Sciences
1992	Elizabeth Turpin	Arts & Sciences
1993	Mark Curtis	Technology
1993	Marilyn Gillette	Arts & Sciences
1994	Lynn Bartholome	Arts & Sciences
1994	Michael P. Keating	Optometry
1995	Adnan Dakkuri	Pharmacy
1995	Cheryl Irvine	Arts & Sciences

GENERAL INFORMATION

MICHIGAN ASSOCIATION OF GOVERNING BOARDS, CONT.

Student Recipients:

1982	Pamela Sue Fitch	Allied Health
1982	Steven Mark Harvey	Business
1983	Douglas Totten	Optometry
1983	Beth Trombley	Pharmacy
1984	Michele Behne	Arts & Sciences
1984	Kevin Lokar	Arts & Sciences
1985	David Gough	Business
1985	Kathleen Spuller	Arts & Sciences
1986	Bradford Krueger	Arts & Sciences
1986	Diedre Nordlund	Pharmacy
1987	Ann Marie Wilson	Pharmacy
1987	Mark Swan	Optometry
1988	Earl Heron	Technology
1988	Patricia Hoard	Optometry
1989	Lee Peplinski	Optometry
1989	Lisa Kluetz	Pharmacy
1990	Mary Jo Horn	Optometry
1990	David J. Miller	Pharmacy
1991	Alan R. Hopkins	Technology
1991	Brenda L. Spedowski	Business
1992	Jane A. Tughan	Allied Health Sciences
1992	Thomas C. Dowling	Pharmacy
1993	Steven Frederickson	Technology
1993	Ann Marie Boyke	Optometry
1994	Jennifer Pisano King	Arts & Sciences
1994	Chris Vsetula	Technology
1995	Anthony Hatfield	Business
1995	Leslie Hatfield	Business

Source: Office of Academic Affairs

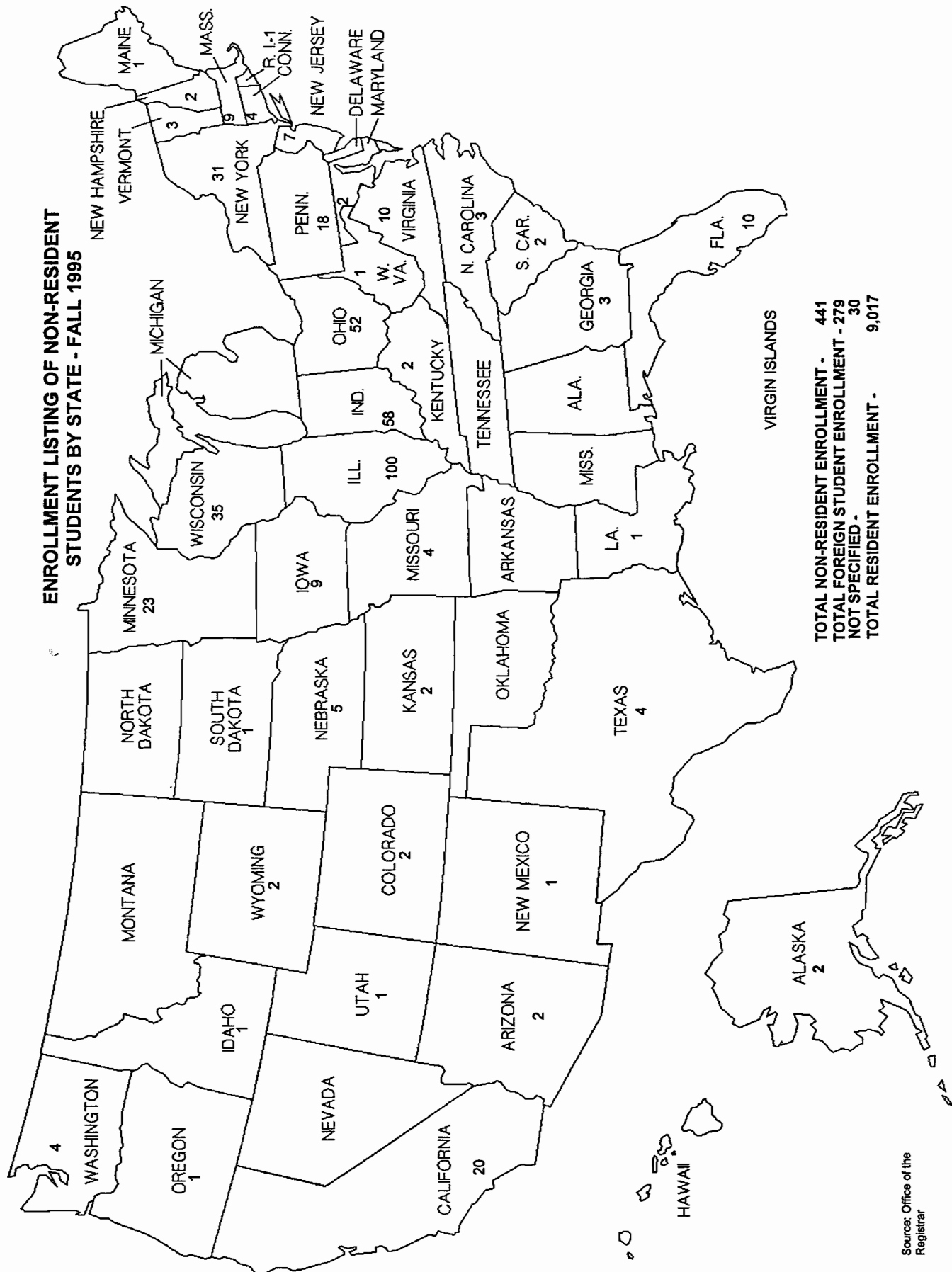


Students/Enrollment

Ferris State University Fact Book 1995-96 -25-

STUDENTS/ENROLLMENT

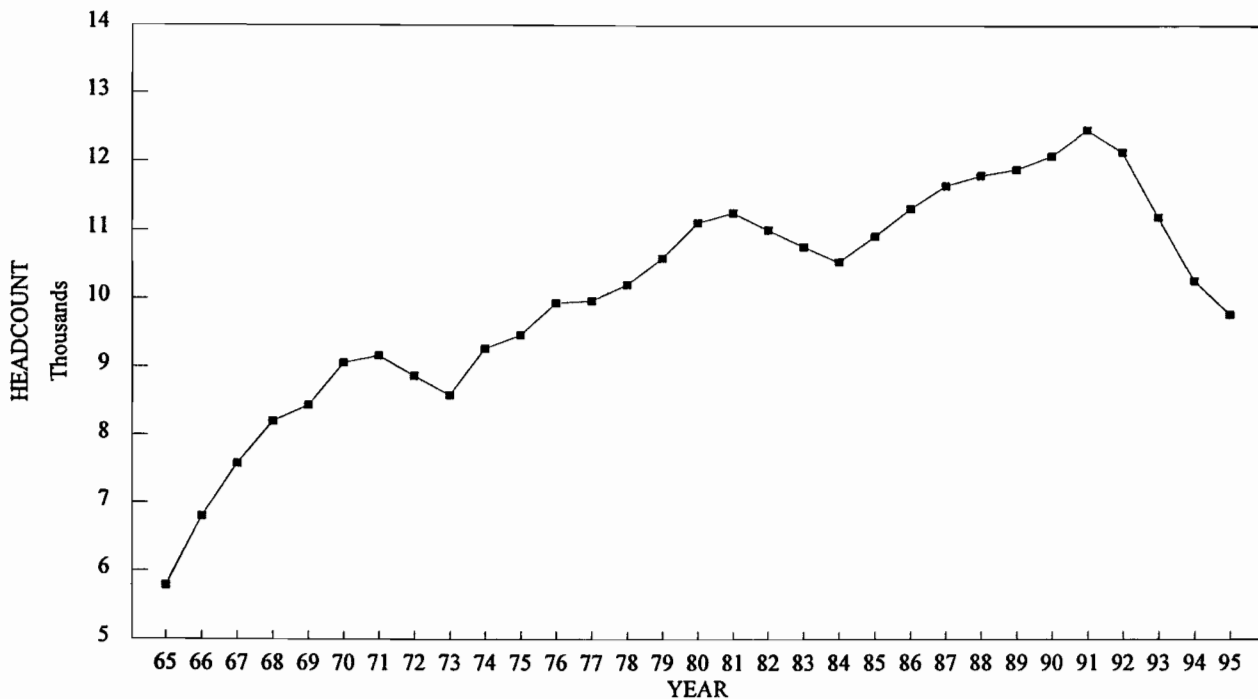
ENROLLMENT LISTING OF NON-RESIDENT STUDENTS BY STATE - FALL 1995



TOTAL NON-RESIDENT ENROLLMENT - 441
 TOTAL FOREIGN STUDENT ENROLLMENT - 279
 NOT SPECIFIED - 30
 TOTAL RESIDENT ENROLLMENT - 9,017

Source: Office of the Registrar

TOTAL HEADCOUNT ENROLLMENT

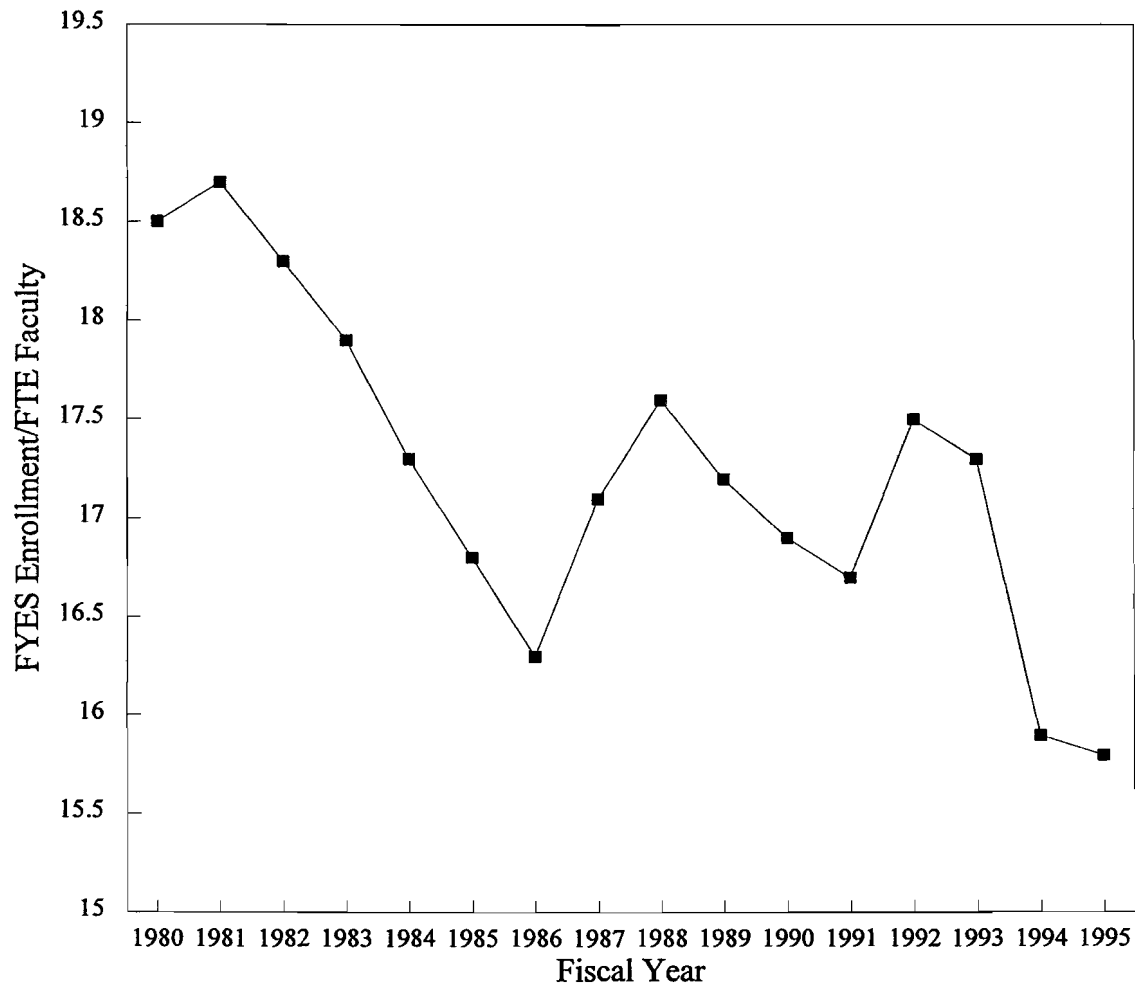


TOTAL HEADCOUNT ENROLLMENT FALL ENROLLMENT

1965	5,787	1981	11,261
1966	6,801	1982	11,008
1967	7,581	1983	10,767
1968	8,200	1984	10,540
1969	8,439	1985	10,909
1970	9,057	1986	11,310
1971	9,161	1987	11,643
1972	8,864	1988	11,792
1973	8,584	1989	11,878
1974	9,264	1990	12,076
1975	9,460	1991	12,461
1976	9,934	1992	12,134
1977	9,965	1993	11,188
1978	10,208	1994	10,258
1979	10,596	1995	9,767
1980	11,112		

Source: Office of the Registrar/Office of Institutional Studies

FERRIS STATE UNIVERSITY
FYES ENROLLMENT PER FTE FACULTY
1980 to 1995



Source: State of Michigan HEIDI Database, Budget Office

FERRIS STATE UNIVERSITY

5-YEAR HEADCOUNT ENROLLMENT OVERVIEW BY COLLEGE

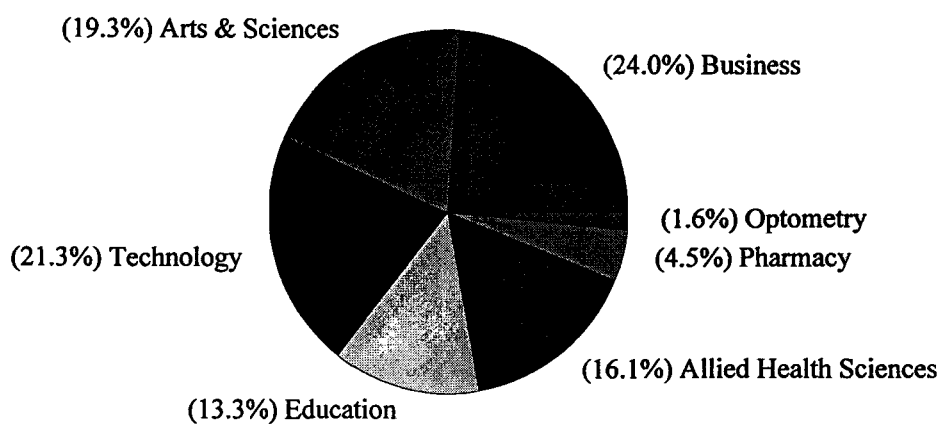
FALL TERM

COLLEGE	1991-92	1992-93	1993-94	1994-95	1995-96
ALLIED HEALTH SCIENCES	1,302	1,495	1,514	1,610	1,568
ARTS & SCIENCES*	2,299	2,230	2,054	1,885	1,881
BUSINESS	4,384	3,864	3,151	2,579	2,342
EDUCATION	1,547	1,651	1,592	1,367	1,301
OPTOMETRY	174	187	186	167	157
PHARMACY	420	427	437	448	441
TECHNOLOGY	2,335	2,280	2,254	2,202	2,077
TOTAL	12,461	12,134	11,188	10,258	9,767

* Effective Fall quarter 1991-92 Pre-Teaching was transferred to the College of Education and several Pre-Professional programs were transferred to the College of Allied Health Sciences from the College of Arts & Sciences.

Source: Fall Quarter/Semester Enrollment Report
Office of the Registrar
(91-92 thru 92-93 - Quarter System; 93-94 thru 95-96 - Semester System)

PERCENT OF STUDENTS BY COLLEGE
FALL SEMESTER 1995



STUDENT ENROLLMENT BY COLLEGE

BUSINESS	2,342
ARTS & SCIENCES	1,881
TECHNOLOGY	2,077
EDUCATION	1,301
ALLIED HEALTH SCIENCE	1,568
PHARMACY	441
OPTOMETRY	157
TOTAL	9,767

Source: Fall Semester Enrollment Report
Office of the Registrar

COMPARATIVE ENROLLMENT REPORT BY COLLEGE

COLLEGE	MEN	WOMEN	1995 TOTAL	1994 TOTAL
BUSINESS	1,391	951	2,342	2,579
Masters Degree	39	28	67	70
B.S Degree	1,194	698	1,892	2,104
Associate Degree	119	195	314	367
Undeclared Major	36	26	62	35
Certificate	3	4	7	3
ARTS & SCIENCES	900	981	1,881	1,885
B.S. Degree	94	263	357	339
Associate Degree	680	566	1,246	1,325
Undeclared Major	126	152	278	221
TECHNOLOGY	1,909	168	2,077	2,202
B.S. Degree	804	53	857	883
Associate Degree	1,041	99	1,140	1,163
Undeclared Major	60	15	75	154
Certificate	4	1	5	2
EDUCATION	740	561	1,301	1,367
Masters Degree	24	32	56	41
B.S. Degree	368	250	618	705
Associate Degree	327	239	566	582
Undeclared Major	12	32	44	31
Non-degree Teacher Cert	9	8	17	8
ALLIED HEALTH SCIENCES	304	1,264	1,568	1,610
B.S. Degree	171	491	662	698
Associate Degree	130	764	894	900
Undeclared Major	3	9	12	12
PHARMACY	210	231	441	448
Pharm D Degree	6	11	17	15
B.S. Degree	204	220	424	433
OPTOMETRY	72	85	157	167
O.D. Degree	62	68	130	127
Associate Degree	10	17	27	40
TOTALS	5,526	4,241	9,767	10,258

Source: Fall Semester Enrollment Report, Office of the Registrar

STUDENTS/ENROLLMENT

ENROLLMENT BY AGE UNDERGRADUATE STUDENTS - DEGREE SEEKING FALL 1995

AGE	FULL-TIME STUDENTS				PART-TIME STUDENTS			
	MALE	FEMALE	GRAND TOTAL		MALE	FEMALE	GRAND TOTAL	
<18	6	6	12	0.16%			0	0.00%
18	607	504	1,111	14.89%	6	6	12	0.78%
19	758	496	1,254	16.81%	28	26	54	3.49%
20	666	437	1,103	14.79%	47	46	93	6.01%
21	670	458	1,128	15.12%	46	46	92	5.94%
22	564	347	911	12.21%	78	69	147	9.50%
23	359	184	543	7.28%	56	48	104	6.72%
24	256	109	365	4.89%	57	48	105	6.78%
25	171	74	245	3.28%	32	29	61	3.94%
26	78	47	125	1.68%	41	23	64	4.13%
27	61	40	101	1.35%	19	25	44	2.84%
28	41	33	74	0.99%	21	20	41	2.65%
29	34	20	54	0.72%	18	11	29	1.87%
30	29	21	50	0.67%	18	22	40	2.58%
31	28	19	47	0.63%	14	19	33	2.13%
32	17	13	30	0.40%	13	21	34	2.20%
33	15	18	33	0.44%	15	35	50	3.23%
34	15	17	32	0.43%	21	16	37	2.39%
35	16	15	31	0.42%	10	29	39	2.52%
36	19	18	37	0.50%	13	23	36	2.33%
37	5	13	18	0.24%	15	37	52	3.36%
38	11	12	23	0.31%	11	22	33	2.13%
39	5	16	21	0.28%	8	25	33	2.13%
40	9	7	16	0.21%	10	29	39	2.52%
41	3	15	18	0.24%	12	19	31	2.00%
42	2	7	9	0.12%	12	18	30	1.94%
43	7	7	14	0.19%	5	21	26	1.68%
44	10	2	12	0.16%	7	24	31	2.00%
45	3	8	11	0.15%	4	13	17	1.10%
46	3	4	7	0.09%	8	16	24	1.55%
47	1	4	5	0.07%	8	14	22	1.42%
48	2	4	6	0.08%	2	16	18	1.16%
49	1	2	3	0.04%	2	9	11	0.71%
50	2	1	3	0.04%	3	9	12	0.78%
51		2	2	0.03%	1	3	4	0.26%
52		1	1	0.01%	1	6	7	0.45%
53			0	0.00%	2	3	5	0.32%
54		2	2	0.03%		2	2	0.13%
55			0	0.00%	1	5	6	0.39%
56		1	1	0.01%	1	1	2	0.13%
57			0	0.00%			0	0.00%
58			0	0.00%		1	1	0.06%
59			0	0.00%	1		1	0.06%
60			0	0.00%			0	0.00%
61			0	0.00%			0	0.00%
62			0	0.00%			0	0.00%
63			0	0.00%		1	1	0.06%
64			0	0.00%			0	0.00%
>64		1	1	0.01%			0	0.00%
UNKNOWN			0	0.00%	7	18	25	1.61%
TOTAL	4,474	2,985	7,459	100.00%	674	874	1,548	100.00%

TOTAL FULL-TIME AND PART-TIME

	5,148	3,859	9,007
Average Age - Full-Time			22
Average Age - Part-Time			30
Average Age - Full-Time and Part-Time			23

STUDENTS/ENROLLMENT

ENROLLMENT BY AGE UNDERGRADUATE STUDENTS - NON-DEGREE SEEKING FALL 1995

AGE	FULL-TIME STUDENTS				PART-TIME STUDENTS			
	MALE	FEMALE	GRAND TOTAL		MALE	FEMALE	GRAND TOTAL	
<18		1	1	0.01%	7	12	19	1.23%
18		1	1	0.01%	3	3	6	0.39%
19	1	2	3	0.04%	3	1	4	0.26%
20	5	2	7	0.09%	6	3	9	0.58%
21	1	4	5	0.07%	4	2	6	0.39%
22	1	3	4	0.05%	1		1	0.06%
23	3	1	4	0.05%	4	5	9	0.58%
24	3	2	5	0.07%	7	2	9	0.58%
25	7	1	8	0.11%	6	5	11	0.71%
26	5		5	0.07%	8	7	15	0.97%
27			0	0.00%	3	3	6	0.39%
28	1	2	3	0.04%	4	9	13	0.84%
29	1		1	0.01%	9	4	13	0.84%
30			0	0.00%	2	5	7	0.45%
31			0	0.00%	1	7	8	0.52%
32			0	0.00%	5	3	8	0.52%
33			0	0.00%	5	9	14	0.90%
34	1		1	0.01%	12	6	18	1.16%
35			0	0.00%	2	9	11	0.71%
36	1	1	2	0.03%	6	5	11	0.71%
37			0	0.00%	7	3	10	0.65%
38			0	0.00%	5	14	19	1.23%
39			0	0.00%	6	10	16	1.03%
40	1	1	2	0.03%	6	5	11	0.71%
41			0	0.00%	5	6	11	0.71%
42			0	0.00%	8	3	11	0.71%
43			0	0.00%	7	3	10	0.65%
44			0	0.00%	6	5	11	0.71%
45			0	0.00%	5	3	8	0.52%
46			0	0.00%	4	6	10	0.65%
47			0	0.00%	4	3	7	0.45%
48			0	0.00%	3		3	0.19%
49			0	0.00%	3	4	7	0.45%
50			0	0.00%	2	3	5	0.32%
51			0	0.00%	3	2	5	0.32%
52			0	0.00%	3	1	4	0.26%
53			0	0.00%	2	3	5	0.32%
54			0	0.00%	2	2	4	0.26%
55			0	0.00%		2	2	0.13%
56			0	0.00%	1	1	2	0.13%
57			0	0.00%	1	1	2	0.13%
58			0	0.00%	2	2	4	0.26%
59			0	0.00%		1	1	0.06%
60			0	0.00%	1		1	0.06%
61			0	0.00%	1		1	0.06%
62			0	0.00%		2	2	0.13%
63			0	0.00%		1	1	0.06%
64			0	0.00%	1		1	0.06%
>64			0	0.00%	1		1	0.06%
UNKNOWN	2		2	0.03%	19	18	37	2.39%
TOTAL	33	21	54	100.00%	206	204	410	100.00%

TOTAL FULL-TIME AND PART-TIME

239

225

464

Average Age - Full-Time

24

Average Age - Part-Time

36

Average Age - Full-Time and Part-Time

34

STUDENTS/ENROLLMENT

ENROLLMENT BY AGE GRADUATE STUDENTS FALL 1995

AGE	FULL-TIME STUDENTS			PART-TIME STUDENTS		
	MALE	FEMALE	GRAND TOTAL	MALE	FEMALE	GRAND TOTAL
<18			0 0.00%			0 0.00%
18			0 0.00%			0 0.00%
19			0 0.00%			0 0.00%
20			0 0.00%			0 0.00%
21			0 0.00%			0 0.00%
22			0 0.00%	1	1	2 1.40%
23			0 0.00%	1	1	2 1.40%
24			0 0.00%	2	3	5 3.50%
25			0 0.00%	2	1	3 2.10%
26		1	1 20.00%	5	5	10 6.99%
27		1	1 20.00%	5	3	8 5.59%
28		1	1 20.00%	2	1	3 2.10%
29			0 0.00%	2	1	3 2.10%
30			0 0.00%	1	2	3 2.10%
31			0 0.00%	6	4	10 6.99%
32			0 0.00%	2	3	5 3.50%
33	1		1 20.00%	1	3	4 2.80%
34			0 0.00%	1	3	4 2.80%
35			0 0.00%	4	1	5 3.50%
36			0 0.00%	2	1	3 2.10%
37			0 0.00%		3	3 2.10%
38			0 0.00%		4	4 2.80%
39			0 0.00%	4	1	5 3.50%
40			0 0.00%	4	4	8 5.59%
41		1	1 20.00%	4	5	9 6.29%
42			0 0.00%	1	1	2 1.40%
43			0 0.00%	1	6	7 4.90%
44			0 0.00%	2	2	4 2.80%
45			0 0.00%	5	1	6 4.20%
46			0 0.00%	1	1	2 1.40%
47			0 0.00%	2	5	7 4.90%
48			0 0.00%	2	2	4 2.80%
49			0 0.00%		1	1 0.70%
50			0 0.00%		1	1 0.70%
51			0 0.00%	2		2 1.40%
52			0 0.00%			0 0.00%
53			0 0.00%	1		1 0.70%
54			0 0.00%			0 0.00%
55			0 0.00%			0 0.00%
56			0 0.00%		1	1 0.70%
57			0 0.00%			0 0.00%
58			0 0.00%			0 0.00%
59			0 0.00%			0 0.00%
60			0 0.00%			0 0.00%
61			0 0.00%			0 0.00%
62			0 0.00%			0 0.00%
63			0 0.00%			0 0.00%
64			0 0.00%			0 0.00%
>64			0 0.00%			0 0.00%
UNKNOWN			0 0.00%	3	3	6 4.20%
TOTAL	1	4	5 100.00%	69	74	143 100.00%

TOTAL FULL-TIME AND PART-TIME

	70	78	148
Average Age - Full-Time			31
Average Age - Part-Time			36
Average Age - Full-Time and Part-Time			36

STUDENTS/ENROLLMENT

ENROLLMENT BY AGE
FIRST PROFESSIONAL STUDENTS
FALL 1995

AGE	FULL-TIME STUDENTS				PART-TIME STUDENTS			
	MALE	FEMALE	GRAND TOTAL		MALE	FEMALE	GRAND TOTAL	
<18			0	0.00%			0	0.00%
18			0	0.00%			0	0.00%
19			0	0.00%			0	0.00%
20			0	0.00%			0	0.00%
21	4	3	7	4.86%			0	0.00%
22	8	12	20	13.89%			0	0.00%
23	11	15	26	18.06%			0	0.00%
24	8	21	29	20.14%			0	0.00%
25	11	13	24	16.67%			0	0.00%
26	7	6	13	9.03%			0	0.00%
27	1	1	2	1.39%			0	0.00%
28	2	3	5	3.47%			0	0.00%
29	1		1	0.69%			0	0.00%
30	1		1	0.69%			0	0.00%
31	1	1	2	1.39%			0	0.00%
32	2	1	3	2.08%			0	0.00%
33	4	1	5	3.47%			0	0.00%
34	2		2	1.39%	1	1	2	1.39%
35	1		1	0.69%			0	0.00%
36	1		1	0.69%			0	0.00%
37			0	0.00%			0	0.00%
38	1		1	0.69%		1	1	0.69%
39			0	0.00%			0	0.00%
40			0	0.00%			0	0.00%
41			0	0.00%			0	0.00%
42			0	0.00%			0	0.00%
43			0	0.00%			0	0.00%
44			0	0.00%	1		1	0.69%
45			0	0.00%			0	0.00%
46			0	0.00%			0	0.00%
47	1		1	0.69%			0	0.00%
48			0	0.00%			0	0.00%
49			0	0.00%			0	0.00%
50			0	0.00%			0	0.00%
51			0	0.00%			0	0.00%
52			0	0.00%			0	0.00%
53			0	0.00%			0	0.00%
54			0	0.00%			0	0.00%
55			0	0.00%			0	0.00%
56			0	0.00%			0	0.00%
57			0	0.00%			0	0.00%
58			0	0.00%			0	0.00%
59			0	0.00%			0	0.00%
60			0	0.00%			0	0.00%
61			0	0.00%			0	0.00%
62			0	0.00%			0	0.00%
63			0	0.00%			0	0.00%
64			0	0.00%			0	0.00%
>64			0	0.00%			0	0.00%
UNKNOWN			0	0.00%			0	0.00%
TOTAL	67	77	144	100.00%	2	2	4	

TOTAL FULL-TIME AND PART-TIME

69 79 148

Average Age - Full-Time 25

Average Age - Part-Time 38

Average Age - Full-Time and Part-Time 25

Source: SIS+ Download Fall 1995
 IPEDS 95FALLB

**ENROLLMENT BY AGE
SUMMARY****FALL 1995**

Average Age

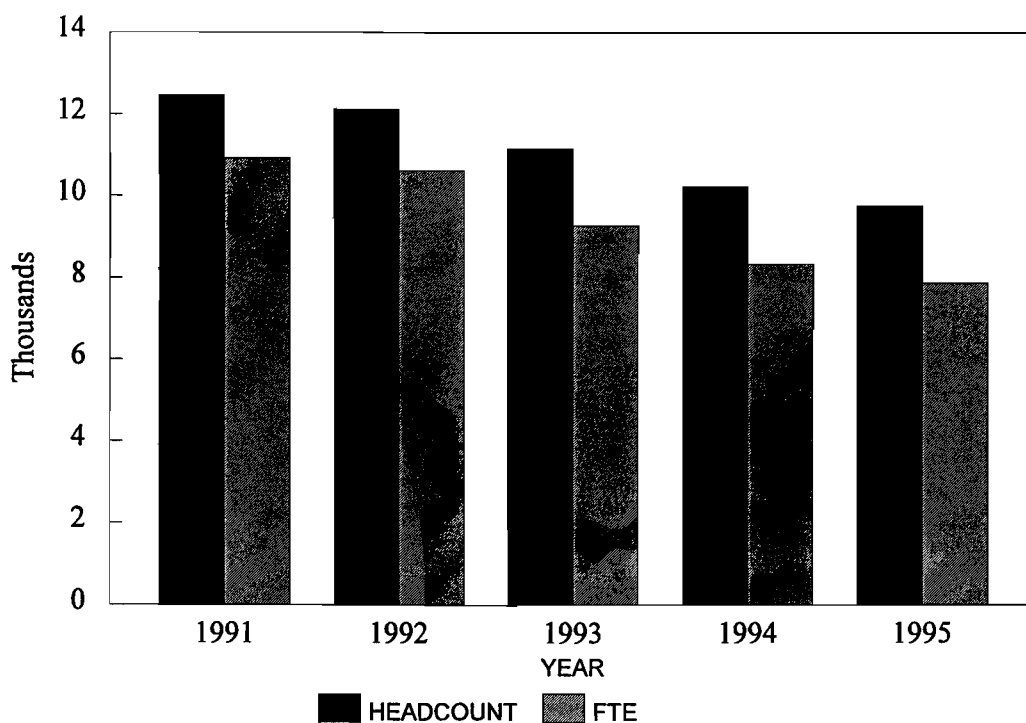
	<u>FULL-TIME</u>	<u>PART-TIME</u>	<u>FULL-TIME AND PART-TIME</u>
UNDERGRADUATE STUDENTS (DEGREE SEEKING)	22	30	23
UNDERGRADUATE STUDENTS (NON-DEGREE SEEKING)	25	36	35
GRADUATE STUDENTS	38	36	36
FIRST PROFESSIONAL STUDENTS	38	36	36
ALL STUDENTS	22	32	24

ENROLLMENT SUMMARY**FALL 1995**

	<u>FULL-TIME</u>	<u>PART-TIME</u>	<u>TOTAL</u>
UNDERGRADUATE STUDENTS	7513	1958	9471
GRADUATE STUDENTS	5	143	148
FIRST PROFESSIONAL STUDENTS	144	4	148
FTIAC'S (included with undergraduates)	1893	42	1935

Source: IPEDS 95

TOTAL FALL HEADCOUNT ENROLLMENT COMPARED TO FTE



FALL TERM	HEADCOUNT	FTE
1991	12,461	10,922
1992	12,134	10,626
1993	11,188	9,294
1994	10,258	8,356
1995	9,767	7,882

NOTE: FTE - Full-Time Equated Student, i.e., 2 Half-Time Students = 1 FTE
FTE is calculated using Presidents Council definition.

Source: Office of Institutional Studies, Presidents Council Reports, 10/95

SCH/FTE/FYES**Student Credit Hours Produced By Student Level**

Fall Term	Undergrad	Graduate	1st Prof	Total
1991	166,593.0	509.0	1,990.5	169,092.5
1992	161,801.0	634.0	2,020.0	164,455.0
1993	141,069.0	611.0	2,624.0	144,304.0
1994	126,567.5	576.0	2,653.0	129,796.5
1995	118,990.5	699.0	2,677.0	122,366.5

Full-Time Equated Student (FTE) By Student Level

Fall Term	Undergrad	Graduate	1st Prof	Total
1991	10,747	42	133	10,922
1992	10,439	53	134	10,626
1993	9,102	51	141	9,294
1994	8,166	48	142	8,356
1995	7,677	58	147	7,882

NOTE: FTE is calculated using Presidents Council definitions.

Source: Office of Institutional Studies, Presidents Council Reports, 10/95

Full-Year Equated Student (FYES)

Academic Year	FYES
91/92	11,310
92/93	10,917
93/94	9,868
94/95	8,973
95/96	8,349 (ESTIMATE)

Source: HEIDI, Appendix A

NOTE: 1993-94 changed to semester system

**ETHNIC DISTRIBUTION: TOTAL UNIVERSITY ENROLLMENT
FALL 1995 COMPARED WITH FALL 1994**

	1995 TOTAL	1994 TOTAL	CHANGES
AMERICAN INDIAN/NATIVE ALASKAN	94	99	(5)
ASIAN OR PACIFIC ISLANDER	150	140	10
BLACK	963	1,072	(109)
FOREIGN	111	178	(67)
HISPANIC	118	130	(12)
WHITE	7,988	8,422	(434)
UNREPORTED	343	217	126
TOTAL	9,767	10,258	(491)

The following definitions are used in determining racial/ethnic designations:

American Indian or Alaskan Native: A person having origins in any of the original peoples of North America.

Asian or Pacific Islander: A person having origins in any of the original peoples of the Far East, Southeast Asia, the Indian Subcontinent, or the Pacific Islands.

Black (not of Hispanic Origin): A person having origins in any of the black racial groups of Africa.

Foreign: A person who is not a citizen of the United States, and who is in this country on a temporary basis and does not have a right to remain indefinitely.

Hispanic: A person of Mexican, Puerto Rican, Cuban, Central or South American or other Spanish culture or origin.

White (not of Hispanic origin): A person having origins in any of the original peoples of Europe, North Africa, or the Middle East.

Source: Fall Semester Enrollment Report, Office of the Registrar

STUDENTS/ENROLLMENT

ENROLLMENT BY PROGRAM FALL TERM

COLLEGE	1990/91	1991/92	1992/93	1993/94	1994/95	1995/96
ALLIED HEALTH SCIENCES						
ALLIED DENTAL						
Dental Assisting	25	14	2	0	0	0
Dental Hygiene	113	114	123	107	101	110
Dental Technology	42	31	29	40	40	26
DEPARTMENT TOTAL	180	159	154	147	141	136
ENVIRONMENTAL & CLINICAL SCI						
Industrial & Env Health Mgt	118	133	157	136	115	110
Medical Technology	49	54	51	52	73	70
Medical Lab Technology	29	17	12	14	25	28
DEPARTMENT TOTAL	196	204	220	202	213	208
HOSPITAL RELATED						
Nuclear Med 2-Yr	40	38	44	49	36	30
Nuclear Med 4-Yr	22	25	21	13	27	33
Radiography	110	109	141	121	111	113
Respiratory Care	24	25	47	48	46	32
DEPARTMENT TOTAL	196	197	253	231	220	208
NURSING						
Nursing 2-Yr	63	84	109	66	91	95
Nursing 4-Yr	13	6	10	4	1	11
Total	76	90	119	70	92	106
OFF-CAMPUS						
Nursing 4-Yr	147	147	165	226	289	244
Off-Campus Total	147	147	165	226	289	244
DEPARTMENT TOTAL	223	237	284	296	381	350
PRE-ALLIED HEALTH						
Pre-Dental Hygiene*	0	70	59	58	79	81
Pre-Dental Tech	0	0	0	0	0	0
Pre-Health Info Mgt	0	0	0	6	9	4
Pre-Health Info Tech	0	0	4	11	14	9
Pre-Health Systems	0	0	1	1	0	1
Pre-Industrial & Env Health*	0	7	5	2	1	0
Pre-Med Lab Tech 2-Yr*	0	6	7	12	12	9
Pre-Medical Tech*	0	7	12	9	9	10
Pre-Med Records T*	0	3	0	0	0	0
Pre-Nuclear Med 2-Yr*	0	4	8	30	32	31
Pre-Nuclear Med 4-Yr*	0	0	0	0	5	7
Pre-Nursing 2-Yr*	0	85	125	138	137	173
Pre-Radiography*	0	19	26	78	75	59
Pre-Respiratory Care*	0	3	12	25	34	37
DEPARTMENT TOTAL	0	204	259	370	407	421

STUDENTS/ENROLLMENT

COLLEGE	1990/91	1991/92	1992/93	1993/94	1994/95	1995/96
ALLIED HEALTH SCIENCES						
HEALTH MANAGEMENT						
Health Care Systems Admin	0	0	0	0	38	70
Health Info Tech 2-Yr	0	0	72	46	56	50
Health Info Mgt 4-Yr	0	0	53	55	43	42
Health Systems Mgt	50	48	68	74	44	20
Health Systems	1	0	0	0	0	0
Medical Records Tech	50	63	0	0	0	0
BS Medical Records	65	54	0	0	0	0
Total	166	165	193	175	181	182
OFF-CAMPUS						
Undeclared	43	57	49	12	12	12
EXD Environmental Health	0	1	2	0	0	0
EXD Health Systems Mgt	23	34	55	68	0	0
EXD Undeclared	1	0	2	0	0	0
Health Care Systems Admin	0	0	0	0	28	32
Health Info Tech 2-Yr	0	0	0	10	11	11
Health Info Mgt 4-Yr	0	0	0	3	12	7
Health Systems Mgt	0	0	0	0	4	1
Medical Records Tech	20	28	12	0	0	0
BS Medical Records Adm	34	16	12	0	0	0
Off-Campus Total	121	136	132	93	67	63
DEPARTMENT TOTAL	287	301	325	268	248	245
ON-CAMPUS TOTAL	814	1,019	1,198	1,195	1,254	1,261
OFF-CAMPUS TOTAL	268	283	297	319	356	307
COLLEGE TOTAL	1,082	1,302	1,495	1,514	1,610	1,568

* These curricula are a subset of the base programs and are utilized by students who are academically admissible and are waiting to enter the technical phase of the program or by students who are fulfilling academic requirements for program admission.

STUDENTS/ENROLLMENT

ENROLLMENT BY PROGRAM FALL TERM

COLLEGE	1990/91	1991/92	1992/93	1993/94	1994/95	1995/96
ARTS & SCIENCES						
Evening College	170	132	110	98	155	168
Fast Track	0	0	0	0	19	25
Undeclared	0	0	0	1	0	81
Total	170	132	110	99	174	274
BIOLOGY						
Ornamental Hort 2-Yr	34	41	31	27	39	28
Applied Biology 4-Yr	107	117	98	106	92	82
Biotechnology	7	9	14	19	24	42
DEPARTMENT TOTAL	148	167	143	152	155	152
PHYSICAL SCIENCES						
Industrial Chemical Tech	20	20	25	18	13	16
DEPARTMENT TOTAL	20	20	25	18	13	16
MATHEMATICS						
Actuarial Science - Math	0	3	7	6	5	6
Applied Math	21	15	9	10	9	5
DEPARTMENT TOTAL	21	18	16	16	14	11
LANGUAGES & LITERATURE						
Journalism Associate	76	51	49	45	29	7
Technical Communications	12	13	13	20	21	19
DEPARTMENT TOTAL	88	64	62	65	50	26
SOCIAL SCIENCES						
BS Social Work	274	211	224	226	188	173
TOTAL	274	211	224	226	188	173
OFF-CAMPUS						
BSW Social Work	0	0	0	0	0	30
Off-Campus Total	0	0	0	0	0	30
DEPARTMENT TOTAL	274	211	224	226	188	203
STUDENT DEVELOPMENT SERVICES						
Collegiate Skills	0	0	0	259	179	215
Directed Studies	0	0	0	322	273	157
Intensive English Program	67	68	98	57	47	47
General Studies	535	581	603	1	0	0
DEPARTMENT TOTAL	602	649	701	639	499	419
PRE-PROF NON-SCIENCES						
Pre-Arts/Liberal Arts*	252	413	296	269	255	262
Pre-Law	68	74	66	44	46	39
Pre-Teaching Elementary**	85	0	0	0	0	0
Pre-Teaching Secondary**	58	0	0	0	0	0
Pre-Social Work						24
DEPARTMENT TOTAL	463	487	362	313	301	325

STUDENTS/ENROLLMENT

COLLEGE	1990/91	1991/92	1992/93	1993/94	1994/95	1995/96
ARTS & SCIENCES						
PRE-PROF SCIENCE						
Pre-Science	144	38	26	114	119	119
Pre-Dentistry	32	20	19	12	6	12
Pre-Engineering	45	40	30	10	8	6
Pre-Medicine	49	38	44	28	20	27
Pre-Mortuary Science	10	13	11	12	14	13
Pre-Veterinary Science	17	22	23	11	15	14
Pre-Optometry	120	114	131	88	70	72
Pre-Pharmacy	266	266	303	251	239	192
DEPARTMENT TOTAL	683	551	587	526	491	455
COLLEGE TOTAL	2,469	2,299	2,230	2,054	1,885	1,881

*Pre-Arts changed to Liberal Arts 1992/93

**Moved to College of Education 1991/92

STUDENTS/ENROLLMENT

ENROLLMENT BY PROGRAM FALL TERM

COLLEGE	1990/91	1991/92	1992/93	1993/94	1994/95	1995/96
BUSINESS						
ACCOUNTANCY						
Master/Accountancy	7	9	8	3	0	0
Accountancy 4-Yr	319	335	253	180	138	133
Accountancy CIS 4-Yr	0	0	0	18	27	25
Accountancy Finance 4-Yr	56	54	47	28	15	18
Accountancy Transfer	26	30	28	26	20	16
Total	408	428	336	255	200	192
OFF-CAMPUS						
Accountancy 4-Yr	28	13	9	4	2	2
Accountancy Transfer	8	22	33	34	39	42
Undeclared	46	50	46	73	35	62
Off-Campus Total	82	85	88	111	76	106
DEPARTMENT TOTAL	490	513	424	366	276	298
COMPUTER INFORMATION SYSTEMS						
CIS 4-Yr	198	217	155	168	157	149
CIS Accounting 4-Yr	49	54	43	17	9	4
CIS Management 4-Yr	68	61	45	35	17	18
CIS Marketing 4-Yr	21	19	13	6	4	2
CIS 4-Yr Transfer	38	31	32	24	29	31
Master CIS	0	0	0	7	3	0
Master CIS Mgt	9	13	10	0	0	0
Master CIS Mgt Conditional	12	9	11	9	0	1
Masters Info Sys Mgt	0	0	0	10	38	5
Masters Info Sys Mgt Cond	0	0	0	0	0	10
Court Reporting	58	61	40	37	25	9
Executive Secretary	37	25	16	6	3	0
Legal Secretary	26	26	13	10	3	0
Administrative Services	9	3	0	0	0	0
Admin Services Transfer	1	0	0	0	0	0
Administrative Assistant	31	43	47	34	14	4
Office Automation Systems	15	18	17	15	14	2
Office Auto Systems Transfer	2	3	12	9	6	6
Total	574	583	454	387	322	241
OFF-CAMPUS						
CIS 4-Yr	0	0	0	0	0	12
Master CIS Conditional	0	0	0	11	13	5
Master CIS Mgt	10	8	9	1	0	0
Master CIS Mgt Conditional	11	8	6	0	0	0
Masters Info Sys Mgt	0	0	0	13	16	25
Masters Info Sys Mgt Cond	0	0	0	0	0	21
Off-Campus Total	21	16	15	25	29	63
DEPARTMENT TOTAL	595	599	469	412	351	304

STUDENTS/ENROLLMENT

COLLEGE	1990/91	1991/92	1992/93	1993/94	1994/95	1995/96
BUSINESS MANAGEMENT						
Business Administration	592	554	468	368	258	201
Business Admin Transfer	68	71	75	48	28	38
Business Economics	16	15	4	0	0	0
Bus Economics Transfer	1	0	0	0	0	0
Finance 4-Yr	62	77	67	47	37	35
Finance Transfer	15	6	5	6	4	4
General Business	0	0	0	12	83	119
Human Resource Mgt	0	0	0	11	16	24
Human Res Mgt Transfer	0	0	0	1	2	3
Insurance 4-Yr	32	34	37	16	13	7
Insurance/Real Estate 4-Yr	37	30	21	20	15	12
Insurance Transfer	3	8	7	0	0	2
International Business	49	60	72	57	52	50
International Bus Transfer	2	6	6	5	4	3
International Business Cert	0	0	0	0	0	1
Legal Assistant	88	96	79	62	33	35
Management	249	234	180	120	88	61
Management Transfer	23	26	26	19	8	8
Operations Management	0	0	0	8	12	5
Operations Mgt Transfer	0	0	0	2	6	4
Personnel Mgt/Ind Relations	31	40	40	16	4	1
Personnel Mgt/Ind Rel Transfe	8	7	6	6	1	0
Production Mgt 4-Yr	23	28	13	4	1	0
Production Mgt Transfer	23	14	13	3	1	0
Quantitative Business	4	5	6	4	2	1
Qnt Business Transfer	1	0	2	0	0	0
Real Estate 2-Yr	29	13	22	17	11	11
Real Estate Cert	0	0	0	0	0	1
Small Business Mgt	57	58	61	39	27	34
Small Bus Mgt Transfer	12	23	19	11	11	8
Total	1,425	1,405	1,229	902	717	668
OFF-CAMPUS						
Business Administration	65	48	25	16	1	1
Bus Admin Transfer	65	118	141	128	131	126
International Business	0	0	0	0	2	5
Off-Campus Total	130	166	166	144	134	132
DEPARTMENT TOTAL	1,555	1,571	1,395	1,046	851	800
DIVERSIFIED BUSINESS						
Accelerated Business	1	0	0	0	0	0
Diversified Business	60	33	28	13	5	1
DEPARTMENT TOTAL	61	33	28	13	5	1

STUDENTS/ENROLLMENT

COLLEGE	1990/91	1991/92	1992/93	1993/94	1994/95	1995/96
BUSINESS						
MARKETING						
Advertising	196	179	138	126	76	72
Advertising Transfer	29	22	31	21	16	13
Food Service	187	171	143	104	95	57
Hospitality Management	0	0	0	68	56	59
Hospitality Mgt Transfer	59	78	77	0	0	0
Marketing PGM 4-Yr	354	371	384	359	329	281
Marketing PTM 4-Yr	69	86	89	74	70	69
Marketing 2-Yr	0	0	0	0	0	1
Marketing 4-Yr	238	278	258	130	83	76
Marketing Transfer	19	16	20	6	8	7
Marketing Retail	42	37	30	18	7	4
Marketing Retail Transfer	7	3	2	3	1	0
Marketing Sales	107	89	99	82	59	35
Marketing Sales Transfer	12	20	31	15	6	5
Music Industry Management	0	0	0	0	0	1
Pre-PGM	0	0	0	72	84	77
Public Relations	71	86	55	54	42	33
Public Relations Transfer	9	14	14	7	5	5
Retail Fashion Merchandising	86	68	42	14	4	0
Retailing 2-Yr	0	0	0	13	12	7
Retailing 4-Yr	0	0	0	8	16	15
Retailing Transfer	0	0	0	1	2	1
Visual Communications	134	142	115	102	80	70
Visual Communications 4-Yr	16	8	20	37	35	36
Total	1,635	1,668	1,548	1,314	1,086	924
OFF-CAMPUS						
Marketing Transfer	0	0	0	0	10	15
Off-Campus Total	0	0	0	0	10	15
DEPARTMENT TOTAL	1,635	1,668	1,548	1,314	1,096	939
 ON-CAMPUS TOTAL	 4,103	 4,117	 3,595	 2,871	 2,330	 2,026
OFF-CAMPUS TOTAL	233	267	269	280	249	316
COLLEGE TOTAL	4,336	4,384	3,864	3,151	2,579	2,342

STUDENTS/ENROLLMENT

ENROLLMENT BY PROGRAM FALL TERM

COLLEGE	1990/91	1991/92	1992/93	1993/94	1994/95	1995/96
EDUCATION						
OCCUPATIONAL EDUCATION						
Allied Health Education	10	10	8	7	9	9
Biology Education	0	0	37	31	34	33
Business Education	94	72	58	60	53	54
Bus Educ/Office Admin/Sec	0	0	1	1	1	0
Bus Educ General Business	0	0	12	11	5	3
Certification	10	8	4	3	3	6
Chemistry Education	0	0	5	6	5	6
Master Career/Tech Educ	0	0	0	3	9	17
Mast Career/Tech Educ Prov	0	0	0	7	5	9
Master Occupational Educ	16	18	20	8	1	0
Master Occ Ed Provisional	6	5	5	3	1	0
Math Education	60	64	59	54	54	58
Pre-Teaching Elementary	0	85	87	78	74	63
Pre-Teaching Secondary	0	62	68	61	67	70
Science Education	62	51	14	8	0	0
Technical Education	35	36	34	26	25	16
Training - Business & Ind	3	7	5	4	3	2
Undeclared	0	0	0	0	1	1
Wage Earning Home Econ	2	4	8	8	4	2
Total	298	422	425	379	354	349
OFF-CAMPUS						
Allied Health Education	15	13	12	9	4	7
Biology Education	0	0	0	0	0	6
Business Education	12	13	9	10	15	15
Certification	9	11	10	8	5	10
Certification Graduate	0	0	0	1	0	1
Chemistry Education	0	0	0	0	2	2
Master Career/Tech Educ	0	0	0	3	20	25
Master Occupational Educ	18	7	19	10	2	0
Master Occ Ed Provisional	11	1	5	4	3	5
Math Education	2	4	1	2	2	8
Science Education	0	2	3	1	0	0
Technical Education	26	17	26	16	8	8
Training - Business & Ind	0	0	1	2	1	2
Undeclared - Undergrad	17	41	32	21	16	18
Undeclared - Graduate	0	0	0	35	14	25
Wage Earning Home Econ	5	3	1	5	4	3
Off-Campus Total	115	112	119	127	96	135
DEPARTMENT TOTAL	413	534	544	506	450	484
TELEVISION PRODUCTION						
Audiovisual Production 2-Yr	42	12	2	0	0	0
Television Production	141	137	113	122	99	77
DEPARTMENT TOTAL	183	149	115	122	99	77
LEISURE STUDIES						
Recreation Leadership Mgt	100	113	94	109	93	82
DEPARTMENT TOTAL	100	113	94	109	93	82

STUDENTS/ENROLLMENT

COLLEGE	1990/91	1991/92	1992/93	1993/94	1994/95	1995/96
EDUCATION						
CHILD DEVELOPMENT						
Child Development	97	77	89	74	68	59
DEPARTMENT TOTAL	97	77	89	74	68	59
CRIMINAL JUSTICE						
Criminal Justice	596	672	498	369	284	225
Pre-Criminal Justice AA	0	0	0	15	368	374
Pre-Criminal Justice AAS	0	0	309	397	5	0
Criminal Justice Specialist	0	2	2	0	0	0
DEPARTMENT TOTAL	596	674	809	781	657	599
ON-CAMPUS TOTAL	1,274	1,435	1,532	1,465	1,271	1,166
OFF-CAMPUS TOTAL	115	112	119	127	96	135
COLLEGE TOTAL	1,389	1,547	1,651	1,592	1,367	1,301

ENROLLMENT BY PROGRAM FALL TERM

COLLEGE	1990/91	1991/92	1992/93	1993/94	1994/95	1995/96
OPTOMETRY						
PROFESSIONAL						
O.D. Optometry	124	121	123	126	127	130
DEPARTMENT TOTAL	124	121	123	126	127	130
TECHNICAL						
Optometric Tech	21	23	19	23	18	4
Opticianry	24	30	45	37	22	23
DEPARTMENT TOTAL	45	53	64	60	40	27
COLLEGE TOTAL	169	174	187	186	167	157

COLLEGE	1990/91	1991/92	1992/93	1993/94	1994/95	1995/96
PHARMACY						
BS PHARMACY						
BS Pharmacy	384	408	416	422	433	424
DEPARTMENT TOTAL	384	408	416	422	433	424
PHARMACY D						
Pharm D Add ON	6	12	4	6	10	9
Pharm D Track IN	0	0	7	9	5	8
Pharmacy D	0	0	11	0	0	0
DEPARTMENT TOTAL	6	12	22	15	15	17
COLLEGE TOTAL	390	420	438	437	448	441

STUDENTS/ENROLLMENT

ENROLLMENT BY PROGRAM
FALL TERM

COLLEGE	1990/91	1991/92	1992/93	1993/94	1994/95	1995/96
TECHNOLOGY						
AUTOMOTIVE						
Auto Body	55	59	62	48	45	43
Auto & Heavy Equip Mgt	121	141	144	118	82	68
Auto Machine Tech	32	34	21	22	22	8
Auto Service Tech	175	173	150	151	130	129
Heavy Equip Service	81	76	83	16	12	2
Heavy Equip Tech	0	0	0	59	72	107
Heavy Duty Engine	9	10	4	0	0	0
Pre-Auto & Hvy Equip Mgt	0	0	0	0	0	1
Pre-Auto Service Tech	0	0	0	5	3	3
Pre-Hvy Equip Tech	0	0	0	0	2	0
Total	473	493	464	419	368	361
OFF-CAMPUS						
Auto H/E Mfg	6	12	3	0	0	0
Off-Campus Total	6	12	3	0	0	0
DEPARTMENT TOTAL	479	505	467	419	368	361
CONSTRUCTION						
Aerial Mapping	4	2	0	0	0	0
Architectural Tech	171	184	147	112	76	75
Building Construction	105	111	116	80	67	55
Civil Engineering Tech	0	0	0	27	23	18
Construction Eng Tech	30	41	31	0	0	0
Construction Management	46	52	41	13	63	99
Construction Mgt Transfer	0	0	0	47	24	8
Facilities Management	22	18	29	31	25	21
HVACR Engineering Tech	0	0	0	40	50	45
HVACR Technology	0	0	0	68	67	62
Heating Refrig Air Cond	99	96	87	0	0	0
Pre-Architectural Tech	0	0	0	11	20	23
Pre-Bldg Const Tech	0	0	0	26	21	16
Pre-Civil Engineering Tech	0	0	0	3	4	4
Pre-Construction Mgt	0	0	0	0	2	4
Pre-Facilities Management	0	0	0	0	2	4
Pre-HVACR Eng Tech	0	0	0	0	3	3
Pre-HVACR Technology	0	0	0	27	15	17
Pre-Surveying Eng	0	0	0	0	0	2
Pre-Surveying Tech	0	0	0	2	1	1
Survey Engineering	70	71	69	80	82	79
Surveying Technology	14	16	28	34	27	36
HVACR Engineering	34	39	38	0	0	0
Total	595	630	586	601	572	572
OFF-CAMPUS						
Construction Management	7	10	13	2	13	16
Facilities Management	0	0	0	0	0	9
HVACR Engineering	0	8	20	14	14	20
Off-Campus Total	7	18	33	16	27	45
DEPARTMENT TOTAL	602	648	619	617	599	617

STUDENTS/ENROLLMENT

COLLEGE	1990/91	1991/92	1992/93	1993/94	1994/95	1995/96
TECHNOLOGY						
ELECTRICAL						
Avionics	1	0	0	0	0	0
Elec/E'tronics Eng Tech	49	56	56	69	67	66
Industrial Electronics	105	94	95	68	57	68
Pre-Elec/E'tronics Eng	0	0	0	0	1	3
Pre-Indust Elect Tech	0	0	0	12	14	14
Total	155	150	151	149	139	151
OFF-CAMPUS						
Industrial Electronics	0	9	15	0	0	0
Elec/E'tronics Eng Tech	0	0	0	10	9	9
Off-Campus Total	0	9	15	10	9	9
DEPARTMENT TOTAL	155	159	166	159	148	160
PRINTING						
Pre-Printing Management	0	0	0	0	1	0
Pre-Printing Tech	0	0	0	0	1	0
Printing Technology	155	150	124	103	101	85
BS Printing Management	47	48	36	42	48	46
DEPARTMENT TOTAL	202	198	160	145	151	131
MANUFACTURING ENG						
Manufacturing Engineering	48	47	56	59	53	49
Manufacturing Tool	67	67	62	42	27	36
Mechanical Engineering	57	59	66	53	49	59
Plastics Tech 2-Yr	184	202	189	148	120	109
Plastics Eng Tech 4-Yr	88	85	91	96	80	93
Pre-Mechanical Eng	0	0	0	7	8	6
Pre-Mfg Engineering Tech	0	0	0	0	0	4
Pre-Mfg Tooling	0	0	0	1	2	3
Pre-Plastics Engineering	0	0	0	0	29	37
Pre-Plastics Tech	0	0	0	31	41	33
Pre-Product Design Eng	0	0	0	0	4	2
Pre-Tech Draft /Tool	0	0	0	3	2	2
Pre-Welding Eng	0	0	0	0	0	2
Product Design Eng	40	53	57	55	63	43
Quality Technology	0	0	0	0	2	0
Technical Drafting	108	99	104	74	74	71
Technical Illustration	51	50	29	27	15	3
Welding 2-Yr	61	68	66	62	57	54
Welding 4-Yr	31	24	30	40	37	39
Total	735	754	750	698	663	645
OFF-CAMPUS						
Manufacturing Eng	36	38	38	53	74	60
Manufacturing Tech	2	2	4	3	0	0
Plastic Eng Tech 4-Yr	0	0	0	7	9	5
Product Design Eng	0	0	14	20	36	18
Quality Tech	0	0	0	0	0	5
Off-Campus Total	38	40	56	83	119	88
DEPARTMENT TOTAL	773	794	806	781	782	733

STUDENTS/ENROLLMENT

COLLEGE	1990/91	1991/92	1992/93	1993/94	1994/95	1995/96
UNDECLARED	30	31	62	133	154	75
ON-CAMPUS TOTAL	2,190	2,256	2,173	2,145	2,047	1,935
OFF-CAMPUS TOTAL	51	79	107	109	155	142
COLLEGE TOTAL	2,241	2,335	2,280	2,254	2,202	2,077

Source: ENRL2406, Student Profile Enrollment Summary - 90/91-92/93 Quarter System
Institutional Studies REGR1 Enrollment By College for Fall 93/94 - 95/96 Semester System

Degrees

DEGREES CONFERRED BY PROGRAM

ACADEMIC YEAR (SUMMER QUARTER/SEMESTER--SPRING QUARTER/SEMESTER)

	1991-92			1992-93			1993-94*			1994-95		
	AS	BS	MS	AS	BS	MS	AS	BS	MS	AS	BS	MS
ALLIED HEALTH SCI												
ALLIED DENTAL												
Dental Assisting	7			4						1		
Dental Hygiene	49			59			56			47		
Dental Technician	<u>14</u>			<u>15</u>			<u>12</u>			<u>10</u>		
TOTAL	70			78			68			58		
ENVIRONMENTAL/CLINICAL SCI												
Environmental Health (1)					1			1				
Ind & Env Health Mgt (1)		29			52			35			42	
Medical Lab Tech (2)	14			6			5			3		
Medical Tech (2)		<u>20</u>			<u>16</u>			<u>15</u>			<u>21</u>	
TOTAL	14	49		6	69		5	51		3	63	
HEALTH MANAGEMENT												
Health Care Systems Admin											16	
Health Info Mgt*** (2)		25			23			20			16	
Health Info Mgt/ (2)								4				
Health Info Tech** (2)	35			46			36			43		
Health Info Tech/ (2)							2					
Health System Mgt/Exte. (1)								5				
Health System Mgt (1)		<u>23</u>			<u>30</u>			<u>17</u>				
TOTAL	35	48		46	53		38	46		43	32	

DEGREES/PROGRAMS

	1991-92			1992-93			1993-94*			1994-95		
	AS	BS	MS	AS	BS	MS	AS	BS	MS	AS	BS	MS
ALLIED HEALTH SCI												
HEALTH SYSTEMS MGT												
Ind & Env Hlth Haz Waste					3							
Ind & Env Hlth Ind Hyg					1							
Ind & Env Hlth Safety					<u>2</u>							
TOTAL					6						0	
HOSPITAL RELATED												
Nuclear Med Tech (2)	14	11		18	13		15	5		29	3	
Radiography(2)	46			47			50			57		
Respiratory Care (2)	13			<u>11</u>			<u>24</u>			<u>26</u>		
TOTAL	73	11		76	13		89	5		112	3	
NURSING												
Nursing/Off Campus								58			75	
Nursing	<u>34</u>	<u>47</u>		<u>42</u>	<u>42</u>		<u>33</u>	<u>2</u>		<u>30</u>		
TOTAL	34	47		42	42		33	60		30	75	
COLLEGE TOTAL	226	155		248	183		233	162		246	173	

*Changed to Semester System Fall 1993

(1) Prior to semesters, program was in the Health Systems Management Department

(2) Prior to semesters, program was in the Hospital Related Department

**Medical Record Tech changed to Health Info Tech 1992-93

***Medical Record Adm changed to Health Info Mgt 1992-93

DEGREES CONFERRED BY PROGRAM

ACADEMIC YEAR (SUMMER QUARTER/SEMESTER--SPRING QUARTER/SEMESTER)

	1991-92			1992-93			1993-94*			1994-95		
	AS	BS	MS	AS	BS	MS	AS	BS	MS	AS	BS	MS
ARTS & SCIENCES												
BIOLOGICAL SCIENCES												
Applied Biology		33			34			22			32	
Biotechnology		1			4			7			3	
Ornamental Horticulture	14			8			15			10		
TOTAL	14	34		8	38		15	29		10	35	
GENERAL STUDIES												
Liberal Arts				46			42			52		
Pre-Arts	51			5								
Pre-Dentistry	1			1			1			1		
Pre-Engineering	1						2					
Pre-Law	8			13			10			9		
Pre-Medicine	1			7			1			2		
Pre-Mort Science	1			3			1			3		
Pre-Optometry	13			10			7			4		
Pre-Pharmacy	31			49			20			22		
Pre-Science	10			9			7			7		
Pre-Teach (Elementary)**	1											
Pre-Veterinary	1						3			2		
TOTAL	119			143			94			102		
LANG & LIT												
Journalism	12			20			8			12		
Technical Communication		4			6			3			7	
TOTAL	12	4		20	6		8	3		12	7	

DEGREES/PROGRAMS

	1991-92			1992-93			1993-94*			1994-95		
	AS	BS	MS	AS	BS	MS	AS	BS	MS	AS	BS	MS
ARTS & SCIENCES												
MATHEMATICS												
Actuarial Sci Math					2			3			2	
Applied Math		<u>7</u>			<u>5</u>			<u>3</u>			<u>3</u>	
TOTAL		7			7			6			5	
PHYSICAL SCIENCES												
Industrial Chem Tech	<u>16</u>			<u>18</u>			<u>15</u>			<u>12</u>		
TOTAL	16			18			15			12		
SOCIAL SCIENCES												
Social Services Tech.		2					2					
Social Work		<u>58</u>			<u>70</u>			<u>38</u>			<u>57</u>	
TOTAL		60			70		2	38			57	
STUDENT DEV SERV												
Directed Studies							2					
General Studies	<u>10</u>			<u>6</u>			<u>2</u>					
TOTAL	10			6			4					
COLLEGE TOTAL	171	105		195	121		138	76		136	104	

*Changed to semester system Fall 1993

**Pre-Teach Elementary moved to College of Education in Fall, 1991

DEGREES CONFERRED BY PROGRAM

ACADEMIC YEAR (SUMMER QUARTER/SEMESTER—SPRING QUARTER/SEMESTER)

	1991-92			1992-93			1993-94*			1994-95		
	AS	BS	MS	AS	BS	MS	AS	BS	MS	AS	BS	MS
BUSINESS												
ACCOUNTANCY												
Accountancy		65			71			76			53	
Accountancy/Finance								6			3	
Accountancy/Masters			5			3			4			
TOTAL		65	5		71	3		82	4		56	
COMPUTER INFO SYS												
Admin Assistant (1)	15			24			13			7		
Computer Info Systems		73			52			54	9		46	
CIS/Accountancy								6			4	
CIS/M								9			3	
Crt/Freelance Reprtng (1)	15			17			6			5		
Executive Secretary (1)	10			8			3			3		
Info Systems Management			5			6			1			12
Legal Secretary (1)	3			6			4			3		
Office Automation Sys (1)		3			6			11			6	
TOTAL	43	76	5	55	58	6	26	80	10	18	59	12
MANAGEMENT												
Business Administration		210			220			206			174	
Business Economics		3			1							
Diversified Business	27			9			16			12		
Finance		31			35			23			13	
Insurance		19			30			13			5	
Insurance/Real Estate		7			4			3			3	
International Business		9			20			16			21	
Legal Assistant	25			26			28			16		
Management		62			51			39			37	
Personnel Mgt/Ind Rel		15			20			16			17	
Production Management		17			20			8			5	
Quantitative Business		3			4			2			2	
Real Estate	8			14			5			14		
Small Business Mgt		12			18			19			11	
TOTAL	60	388		49	423		49	345		42	288	
Int'l Bus Studies (Cert)										4		
Real Estate (Cert)	11			6			8			6		

DEGREES/PROGRAMS

	1991-92			1992-93			1993-94*			1994-95		
	AS	BS	MS	AS	BS	MS	AS	BS	MS	AS	BS	MS
BUSINESS												
MARKETING												
Advertising		60			56			35			33	
Food Service Mgt	50			67			36			41		
Hospitality Management		40			47			38			36	
Marketing		64			43			41			21	
Marketing/PGM		55			72			63			81	
Marketing/PTM		9			7			18			11	
Marketing/Retail		18			18			14			11	
Marketing/Sales		51			52			36			32	
Public Relations		7			18			14			13	
Retail Fash Merch	16			14			14			9		
Retailing								1			3	
Visual Communication	37	4		26	3		21	20		26	21	
TOTAL	103	308		107	316		71	280		76	262	
COLLEGE TOTAL	206	837	10	211	868	9	146	787	14	136	665	12

CERTIFICATES (Not in College Total)

International Bus Studies

4

Real Estate

11

6

8

6

*Changed to semester system Fall 1993

(1) Prior to semesters, program was in the Office Administration Department

DEGREES CONFERRED BY PROGRAM

ACADEMIC YEAR (SUMMER QUARTER/SEMESTER--SPRING QUARTER/SEMESTER)

	1991-92			1992-93			1993-94*			1994-95		
	AS	BS	MS	AS	BS	MS	AS	BS	MS	AS	BS	MS
EDUCATION												
CHILD DEVELOPMENT												
Child Development	34			41			19			16		
TOTAL	34			41			19			16		
CRIMINAL JUSTICE												
Pre-Arts Criminal Justice	8			28			43			75		
Criminal Justice		141			143			181			154	
TOTAL	8	141		28	143		43	181		75	154	
LEISURE STUDIES & WELLNESS												
Rec Leadership & Mgt		20			19			27			25	
TOTAL		20			19			27			25	
OCCUPATIONAL EDUCATION (1)												
Allied Health Education		9			10			6			6	
Allied Health Educ/Off Camp								2				
Biology Education					11			5			3	
Business Education		18			18			12			15	
Business Education/Gen Bus								2			2	
Business Educ/Off Campus								1				
Career & Technical Educ									9			21
Chemistry Education					4						2	
Community School Rec											1	
Mathematics Education		7			12			10			8	
Mathematics Educ/Off Campus								1				
Occupational Education			26			29			2			1
Occ Education/Off Campus									2			
Pre-Teach Elementary**	6			6			6			2		
Pre-Teach Secondary**	3			3			2			8		
Science Education		10										
Technical Education		30			19			10			22	
Technical Educ/Off Campus								8				
Training Bus & Industry		2			3			2				
Wage Earn Home Econ		3			3			4			6	
TOTAL	9	79	26	9	80	29	8	63	13	10	65	22

DEGREES/PROGRAMS

	1991-92			1992-93			1993-94*			1994-95		
	AS	BS	MS	AS	BS	MS	AS	BS	MS	AS	BS	MS
EDUCATION												
TELEVISION PROD												
Audio Visual Production	12			1			3					
TV Production		33			23			17			21	
TOTAL	12	33		1	23		3	17			21	
COLLEGE TOTAL	63	273	26	79	265	29	73	288	13	101	265	22

*Changed to semester system Fall 1993

(1) Formerly Teacher Education

**Pre-Teach Elementary & Secondary moved to College of Education in Fall 1991

DEGREES CONFERRED BY PROGRAM

ACADEMIC YEAR (SUMMER QUARTER/SEMESTER--SPRING QUARTER/SEMESTER)

	1991-92				1992-93				1993-94*				1994-95		
	AS	BS	OD		AS	BS	OD		AS	BS	OD		AS	BS	OD
OPTOMETRY															
Opticianry	1				11				11				20		
Optometric Tech	7				5				9				12		
Optometry			30				30				31				30
Vision Science		22				25				37				16	
COLLEGE TOTAL	8	22	30		16	25	30		20	37	31		32	16	30

DEGREES CONFERRED BY PROGRAM

ACADEMIC YEAR (SUMMER QUARTER/SEMESTER--SPRING QUARTER/SEMESTER)

	1991-92				1992-93				1993-94*				1994-95		
	AS	BS	Pharm D		AS	BS	Pharm D		AS	BS	Pharm D		AS	BS	Phar D
PHARMACY															
Pharmacy		108	6			138	5			120				129	10
Pharmacy/Doctorate/Add-on											1				
Pharmacy/Doctorate/Track-in											4				
COLLEGE TOTAL		108	6			138	5			120	5			129	10

*Changed to semester system Fall 1993

DEGREES CONFERRED BY PROGRAM

ACADEMIC YEAR (SUMMER QUARTER/SEMESTER-SPRING QUARTER/SEMESTER)

	1991-92			1992-93			1993-94*			1994-95		
	AS	BS	MS	AS	BS	MS	AS	BS	MS	AS	BS	MS
TECHNOLOGY												
AUTOMOTIVE												
Automotive Body	24			16			14			7		
Auto & Heavy Equip Mgt		56			73			56			37	
Auto Machine Tech	17			10			2			9		
Auto Service Tech	74			58			53			40		
Heavy Duty Eng Tech	2			6								
Heavy Equipment Serv								4			6	
Heavy Equipment Tech	30			43			22			10		
TOTAL	147	56		133	73		91	60		66	43	
Auto Mach Tech (Cert)	1											
CONSTRUCTION												
Aerial Mapping Tech	1											
Architectural Tech	36			38			27			12		
Building Const Tech	35			49			18			23		
Civil Eng Tech							7			6		
Construction Eng Tech	13			13								
Construction Management		29			34			4			26	
Construction Mgt/Off Campus								1				
Construction Mgt/Transfer								34				
Facilities Management		11			12			13			14	
HVACR Eng Tech		13			16			14			16	
HVACR Technology	27			34			33			19		
Surveying Engineering		22			15			18			27	
Surveying Tech	3			5			6			8		
TOTAL	115	75		139	77		91	84		68	83	
ELECT/ELECTRONICS												
Elect/Electronics Eng Tech								2			26	
Electrical/Electronics Eng		20			15			23				
Industrial Elect Tech	24			24			18			10		
Radio & TV Serv	1											
TOTAL	25	20		24	15		18	25		10	26	

DEGREES/PROGRAMS

	1991-92			1992-93			1993-94*			1994-95		
	AS	BS	MS	AS	BS	MS	AS	BS	MS	AS	BS	MS
TECHNOLOGY												
COMP AIDED DESIGN												
Cosmetology				1								
TOTAL				1								
GRAPHIC ARTS												
Printing Management		29		21			18			26		
Printing Tech	50			54			36			30		
TOTAL	50	29		54	21		36	18		30	26	
MANUFACTURING ENGIN TECH												
Comp Numerical Control										1		
Mach Tool Technology										12		
Manufacturing Eng Tech		25		23			33			30		
Manufacturing Tech		4					1					
Manufacturing Tech/Off C							1					
Mfg Tooling Tech	20			28			19					
Mech Eng Technology	6			17			12			8		
Plastics Engineering Tech		52		49			60			52		
Plastics Technology	47			79			49			60		
Product Design Eng Tech		19		31			17			29		
Tech Draft/Tool Design	37			44			28			22		
Technical Illustration	15			6			11			5		
Welding Eng Technology		10		9			20			19		
Welding Technology	20			21			10			16		
TOTAL	145	110		195	112		129	132		124	130	
Welding Tech (Cert)	1			1						1		
COLLEGE TOTAL	482	290		546	298		365	319		298	308	
CERTIFICATES (Not in College Total)												
Auto Machine Tech	1											
Welding Tech	1			1						1		

Source: REGR2456, Report for Year End (1991-92 - 1992-93)

Source: Office of Institutional Studies, Paradox, GRADS9495.FBSTART.FSL (1993-94 - 1994-95)

*Changed to semester system Fall 1993

DEGREES CONFERRED AT FERRIS STATE UNIVERSITY

ACADEMIC YEAR (SUMMER QUARTER/SEMESTER - SPRING QUARTER/SEMESTER)

	CERTIFICATE	ASSOCIATE	BACHELOR	MASTERS	DOCTORATE
1986-1987	5	1,119	1,514	15	30
1987-1988	3	1,040	1,521	20	35
1988-1989	2	1,040	1,559	32	30
1989-1990	6	1,177	1,721	27	33
1990-1991	9	1,107	1,662	31	33
1991-1992	13	1,156	1,790	36	36
1992-1993	7	1,295	1,898	38	35
1993-1994	8	975	1,789	27	36
1994-1995	11	948	1,661	34	40

Note: Starting with Fall, 1993 changed to Semester System

Source: REGR 2456, Report for Year End, through 1992/93 year

Source: Office of Institutional Studies, Paradox, GRADS.FBSTART.FSL beginning with 1992-93

FERRIS STATE UNIVERSITY
APPROVED PROGRAMS

PROGRAM NAMES	COLLEGE	DEPARTMENT	DEGREE
Dental Hygiene	AHS	Allied Dental	AAS
Dental Technology	AHS	Allied Dental	AAS
Health Information Management	AHS	Health Management	BS
Health Information Technology	AHS	Health Management	AAS
Health Care Systems Administration	AHS	Health Management	BS
Industrial and Environmental Health Management	AHS	Environmental/Clinical Sciences	BS
Medical Laboratory Technology	AHS	Environmental/Clinical Sciences	AAS
Medical Technology	AHS	Environmental/Clinical Sciences	BS
Nuclear Medicine Technology	AHS	Hospital Related	AAS
Nuclear Medicine Technology	AHS	Hospital Related	BS
Nursing	AHS	Nursing	AAS
Nursing	AHS	Nursing	BSN
Radiography	AHS	Hospital Related	AAS
Respiratory Care	AHS	Hospital Related	AAS
Actuarial Science	A/S	Mathematics	BS
Applied Biology	A/S	Biological Sciences	BS
Applied Mathematics	A/S	Mathematics	BS
Biotechnology	A/S	Biological Sciences	BS
Industrial Chemistry Technology	A/S	Physical Sciences	AAS
Liberal Arts	A/S		AA
Pre-Dentistry	A/S		AS
Pre-Engineering	A/S		AS
Pre-Law	A/S		AA
Pre-Medicine	A/S		AS
Pre-Mortuary Science	A/S		AS
Pre-Optometry	A/S		AS
Pre-Pharmacy	A/S		AS
Pre-Veterinary Medicine	A/S		AS
Ornamental Horticulture Technology	A/S	Biological Sciences	AAS

DEGREES/PROGRAMS

PROGRAM NAMES	COLLEGE	DEPARTMENT	DEGREE
Social Work	A/S	Social Sciences	BSW
Technical and Professional Communication	A/S	Language and Literature	BS
Accountancy	BUS	Accountancy	BS
Accountancy/Computer Information Systems	BUS	Accountancy	BS
Accountancy/Finance	BUS	Accountancy	BS
Accountancy - Transfer	BUS	Accountancy	BS
Advertising	BUS	Marketing	BS
Business Administration	BUS	Management	BS
Computer Information Systems	BUS	Computer Information Systems	BS
Computer Information Systems/Management	BUS	Computer Information Systems	BS
Computer Information Systems/Marketing	BUS	Computer Information Systems	BS
Finance	BUS	Management	BS
Food Service Management	BUS	Marketing	AAS
General Business	BUS	Management	AAS
Hospitality Management	BUS	Marketing	BS
Human Resource Management	BUS	Management	BS
Information Systems Management	BUS	Computer Information Systems	MS
Insurance	BUS	Management	BS
Insurance/Real Estate	BUS	Management	BS
International Business	BUS	Management	BS
International Business	BUS	Management	CERT.
Legal Assistant	BUS	Management	AAS
Management	BUS	Management	BS
Marketing	BUS	Marketing	BS
Marketing/Music Industry Management	BUS	Marketing	BS
Marketing/Professional Golf Management	BUS	Marketing	BS
Marketing/Professional Tennis Management	BUS	Marketing	BS
Marketing/Sales	BUS	Marketing	BS
Operations Management	BUS	Management	BS
Public Relations	BUS	Marketing	BS

DEGREES/PROGRAMS

PROGRAM NAMES	COLLEGE	DEPARTMENT	DEGREE
Quantitative Business	BUS	Management	BS
Real Estate	BUS	Management	AAS
Real Estate certificate	BUS	Management	CERT.
Retailing	BUS	Marketing	BS
Retailing	BUS	Marketing	AAS
Small Business Management	BUS	Management	BS
Visual Communication	BUS	Marketing	AAS
Visual Communication	BUS	Marketing	BS
Allied Health Education	EDU	Occupational Education	BS
Biology Education	EDU	Occupational Education	BS
Business Education	EDU	Occupational Education	BS
Career and Technical Education	EDU	Occupational Education	MS
Chemistry Education	EDU	Occupational Education	BS
Child Development	EDU	Child Development	AAS
Criminal Justice	EDU	Criminal Justice	BS
Mathematics Education	EDU	Occupational Education	BS
Pre-Criminal Justice	EDU	Criminal Justice	AA
Pre-Teaching Elementary	EDU	Occupational Education	AA
Pre-Teaching Secondary	EDU	Occupational Education	AA
Recreation Leadership and Management	EDU	Leisure Studies and Wellness	BS
Technical Education	EDU	Occupational Education	BS
Television Production	EDU	Television Production	BS
Training in Business and Industry	EDU	Occupational Education	BS
Wage Earning Home Economics Education	EDU	Occupational Education	BS
Optometry	OPT	Optometry	OD
Opticianry	OPT	Optometry	AAS
Pharmacy	PHR	Pharmacy	BS
Doctor of Pharmacy/Add-on	PHR	Pharmacy	Pharm.D.
Doctor of Pharmacy/Track-in	PHR	Pharmacy	Pharm.D.
Architectural Technology	TEC	Construction	AAS
Automotive and Heavy Equipment Management	TEC	Automotive	BS

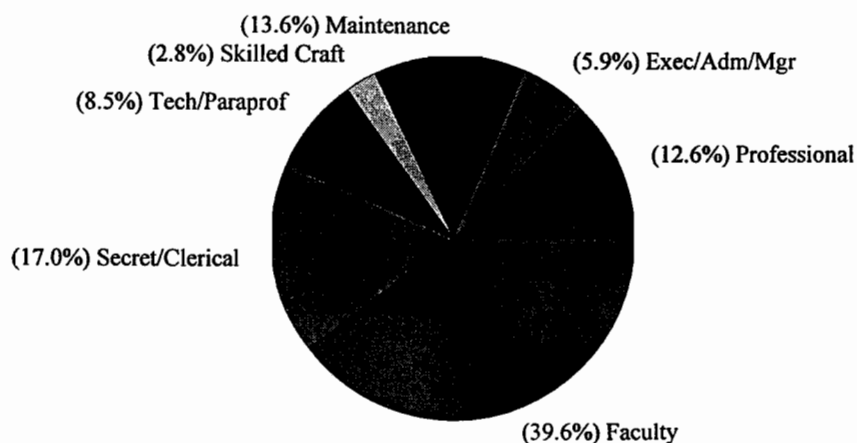
DEGREES/PROGRAMS

PROGRAM NAMES	COLLEGE	DEPARTMENT	DEGREE
Automotive Body	TEC	Automotive	AAS
Automotive Service Technology	TEC	Automotive	AAS
Building Construction Technology	TEC	Construction	AAS
Civil Engineering Technology	TEC	Construction	AAS
Construction Management	TEC	Construction	BS
Electrical/Electronics Engineering Technology	TEC	Electrical/Electronics	BS
Electrical Computer Science	TEC	Electrical/Electronics	BS
Facilities Management	TEC	Construction	BS
Heavy Equipment Service Engineering Technology	TEC	Automotive	BS
Heavy Equipment Technology	TEC	Automotive	AAS
HVACR Engineering Technology	TEC	Construction	BS
HVACR Technology	TEC	Construction	AAS
Industrial Electronics Technology	TEC	Electrical/Electronics	AAS
Manufacturing Engineering Technology	TEC	Manufacturing Engineering Technology	BS
Manufacturing Tooling Technology	TEC	Manufacturing Engineering Technology	AAS
Mechanical Engineering Technology	TEC	Manufacturing Engineering Technology	AAS
Plastics Engineering Technology	TEC	Manufacturing Engineering Technology	BS
Plastics Technology	TEC	Manufacturing Engineering Technology	AAS
Printing Management	TEC	Graphic Arts	BS
Printing Technology	TEC	Graphic Arts	AAS
Product Design Engineering Technology	TEC	Manufacturing Engineering Technology	BS
Quality Technology	TEC	Manufacturing Engineering Technology	CERT.
Surveying Engineering	TEC	Construction	BS
Surveying Technology	TEC	Construction	AAS
Technical Drafting and Tool Design	TEC	Manufacturing Engineering Technology	AAS
Welding Engineering Technology	TEC	Manufacturing Engineering Technology	BS
Welding Technology	TEC	Manufacturing Engineering Technology	AAS

Source: Office of Academic Affairs

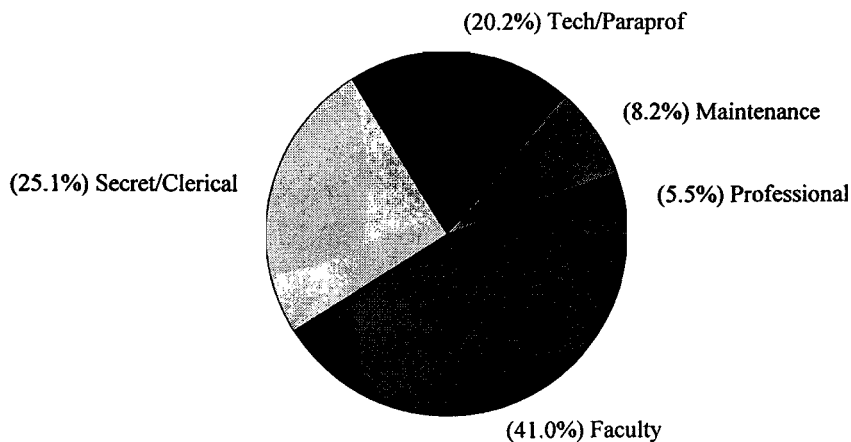
Faculty/Staff

UNIVERSITY STAFF BY JOB CATEGORY AND SEX FULL-TIME



JOB CATEGORY	MALE		FEMALE		TOTAL	
	NUMBER	PERCENT	NUMBER	PERCENT	NUMBER	PERCENT
Professional	94	61.8%	58	38.2%	152	12.6%
Exec/Adm/Mgr	56	78.9%	15	21.1%	71	5.9%
Faculty	359	75.3%	118	24.7%	477	39.6%
Secret/Clerical	4	2.0%	201	98.0%	205	17.0%
Tech/Paraprof	47	46.1%	55	53.9%	102	8.5%
Skilled Craft	33	97.1%	1	2.9%	34	2.8%
Maintenance	82	50.0%	82	50.0%	164	13.6%
TOTAL	675	56.0%	530	44.0%	1,205	100.0%

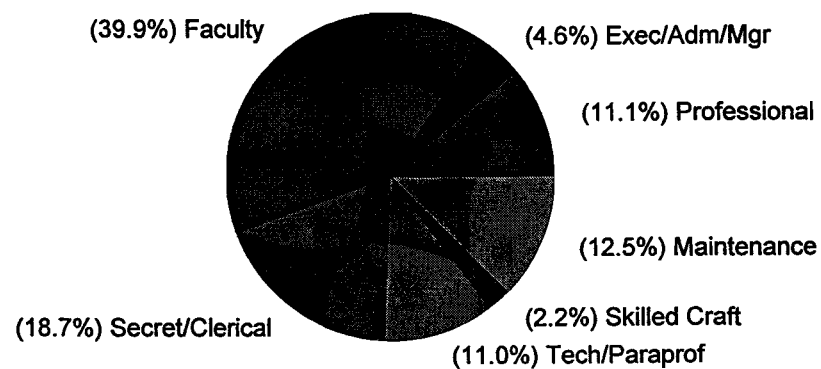
UNIVERSITY STAFF BY JOB CATEGORY AND SEX PART-TIME



JOB CATEGORY	MALE		FEMALE		TOTAL	
	NUMBER	PERCENT	NUMBER	PERCENT	NUMBER	PERCENT
Professional	4	22.2%	14	77.8%	18	5.5%
Faculty	69	51.5%	65	48.5%	134	41.0%
Secret/Clerical	3	3.7%	79	96.3%	82	25.1%
Tech/Paraprof	24	36.4%	42	63.6%	66	20.2%
Maintenance	16	59.3%	11	40.7%	27	8.2%
TOTAL	116	35.5%	211	64.5%	327	100.0%

**TOTAL
UNIVERSITY STAFF BY JOB CATEGORY AND SEX**

JOB CATEGORY	MALE		FEMALE		TOTAL	
	NUMBER	PERCENT	NUMBER	PERCENT	NUMBER	PERCENT
Professional	98	57.6%	72	42.4%	170	11.1%
Exec/Adm/Mgr	56	78.9%	15	21.1%	71	4.6%
Faculty	428	70.0%	183	30.0%	611	39.9%
Secret/Clerical	7	2.4%	280	97.6%	287	18.7%
Tech/Paraprof	71	42.3%	97	57.7%	168	11.0%
Skilled Craft	33	97.1%	1	2.9%	34	2.2%
Maintenance	98	51.3%	93	48.7%	191	12.5%
TOTAL	791	51.6%	741	48.4%	1,532	100.0%



Source: Ferris State University, Office of Affirmative Action Report dated 10/23/95

FERRIS STATE UNIVERSITY DISTINGUISHED TEACHER AWARDS

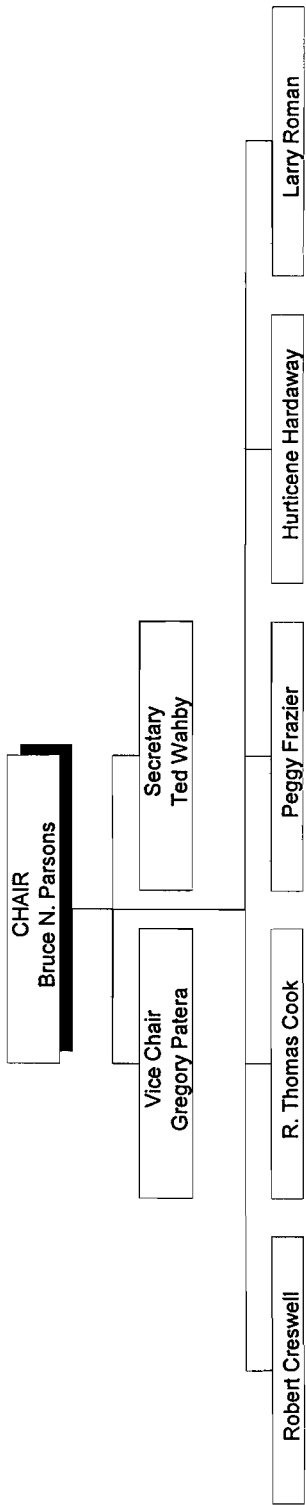
The Ferris State University Academic Senate oversees the selection of the Distinguished Teacher Awards. Teachers receiving this award have been nominated by their peers based on the following criteria: teaching excellence; participation in professional development activities; interest in students outside the classroom/laboratory; and exhibiting distinction as a member of the college community.

YEAR	AWARD RECIPIENT	COLLEGE
1963	Ralph E. Patullo	Arts and Sciences
1964	June B. Carr	Arts and Sciences
1965	Marguerite Jeserich	Arts and Sciences
1966	George Wells	Arts and Sciences
1967	Garnet Zimmerman	Technology
1968	Karlis Kazerovskis	Pharmacy
1969	Frank Karas	Arts and Sciences
1970	Robert K. Harry	Arts and Sciences
1971	Kenneth O. McManis	Arts and Sciences
1972	George N. Holcomb	Pharmacy
1973	Richard Hunter	Allied Health
1974	Roger F. Kennedy	Technology
1975	Everett J. Nienhouse	Arts and Sciences
1976	Barbara Sengelaub	Allied Health
1977	Max T. Yeley	Technology
1978	Richard L. Shaw	Technology
1979	Joseph J. Mitala	Pharmacy
1980	Sidney P. Sytsma	Business
1981	Richard A. Santer	Arts and Sciences
1982	Michael D. Ells	Allied Health
1982	Neill H. Nutter	Arts and Sciences
1983	Herbert L. Carson	Arts and Sciences
1984	Robert E. Friar	Arts and Sciences
1984	Newell H. Johnson	Technology
1985	Julia H. Bonkowski	Allied Health
1985	James P. Lehnert	Arts and Sciences
1986	Ada Lou Carson	Arts and Sciences
1987	Michael C. Cooper	Business
1987	Rose Ann Swartz	Business
1988	Robert C. Ferguson	Arts and Sciences
1988	Garth S. McHattie	Education
1989	Mark A. Curtis	Technology
1989	James D. Maas	Business
1990	Dr. Marilyn Keigley	Business
1990	Christine Towner	Allied Health
1991	Dr. Roxanne M. Cullen	Arts & Sciences
1991	Gary C. Horn	Arts & Sciences
1992	Bruce L. Beetley	Arts & Sciences
1992	John H. Landis	Allied Health Sciences
1993	Doug Fonner	Arts & Sciences
1993	Terry Nerbonne	Education
1994	Fred Lovgren	Business
1994	Edward Stuart	Technology
1995	Maude Bigford	Arts & Sciences
1995	Judy Schottle	Allied Health Sciences

Source: Academic Senate

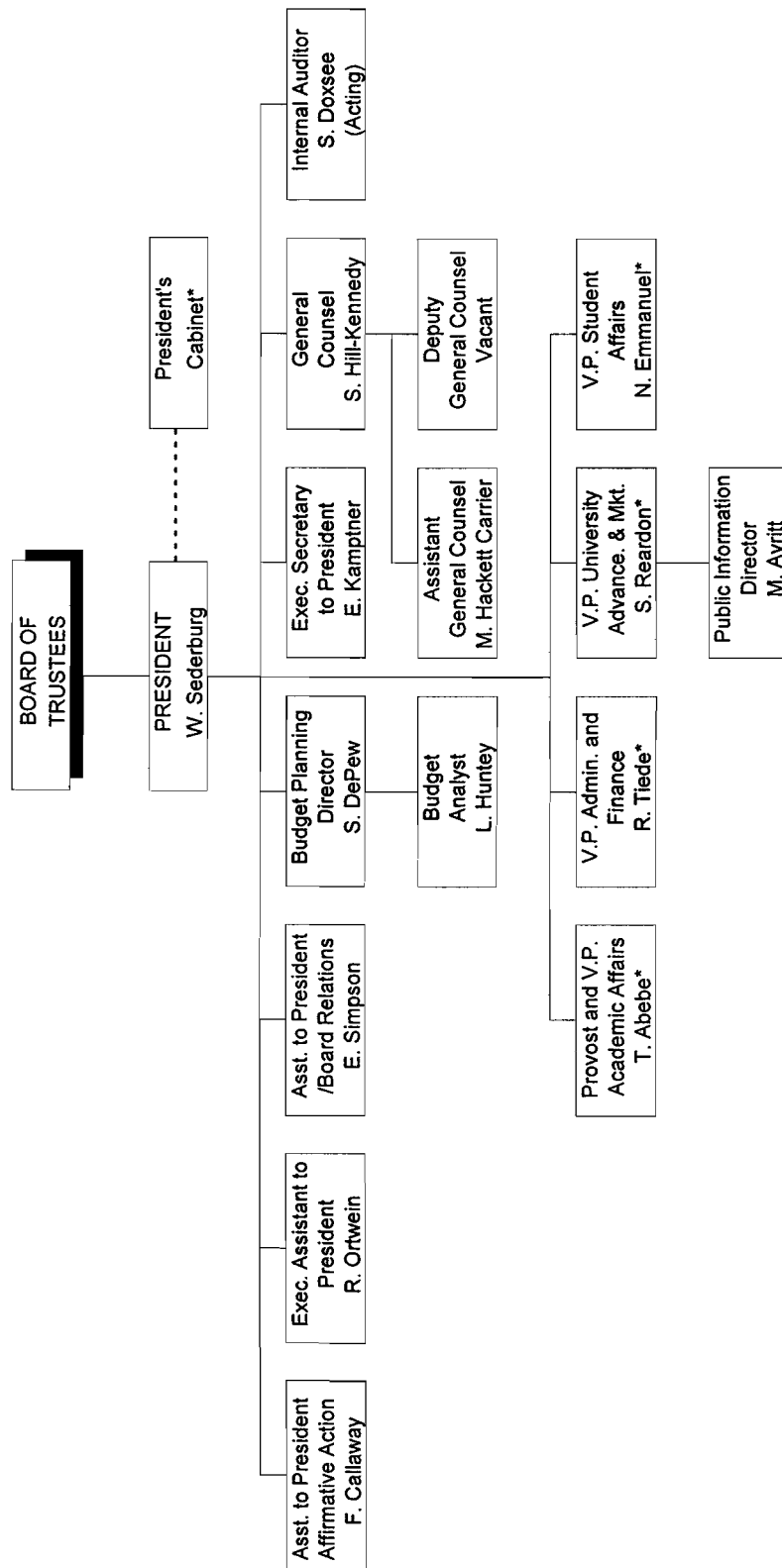
Organizational Charts

FERRIS STATE UNIVERSITY
BOARD OF TRUSTEES



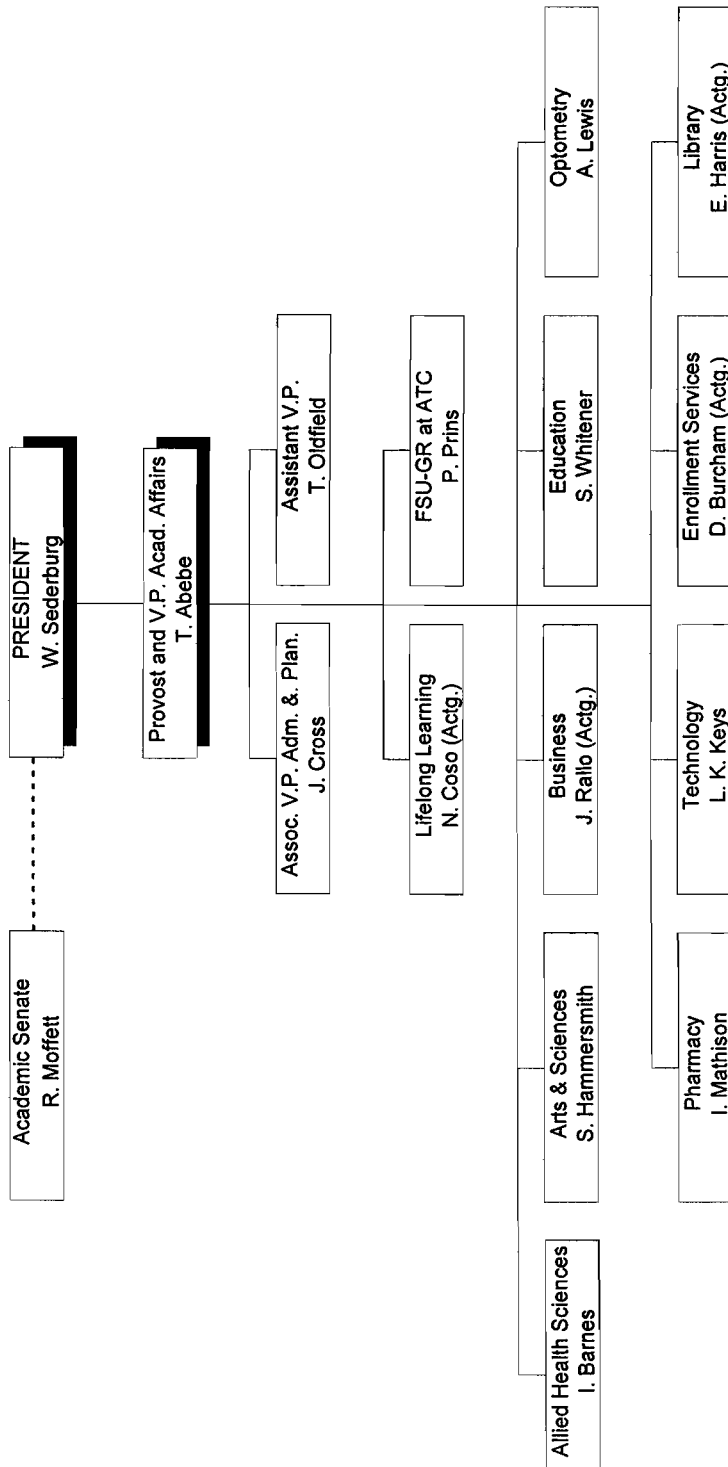
CURRENT AS OF DECEMBER 1, 1995

FERRIS STATE UNIVERSITY
BOARD OF TRUSTEES/EXECUTIVE DIVISION



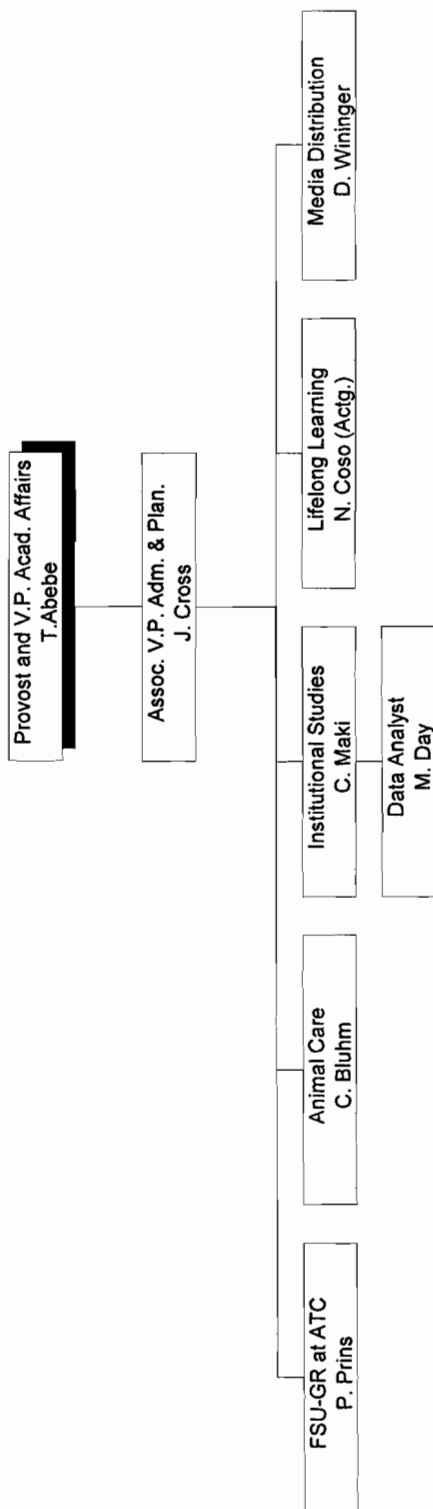
CURRENT AS OF DECEMBER 1, 1995
*CABINET MEMBERS

FERRIS STATE UNIVERSITY
ACADEMIC AFFAIRS DIVISION



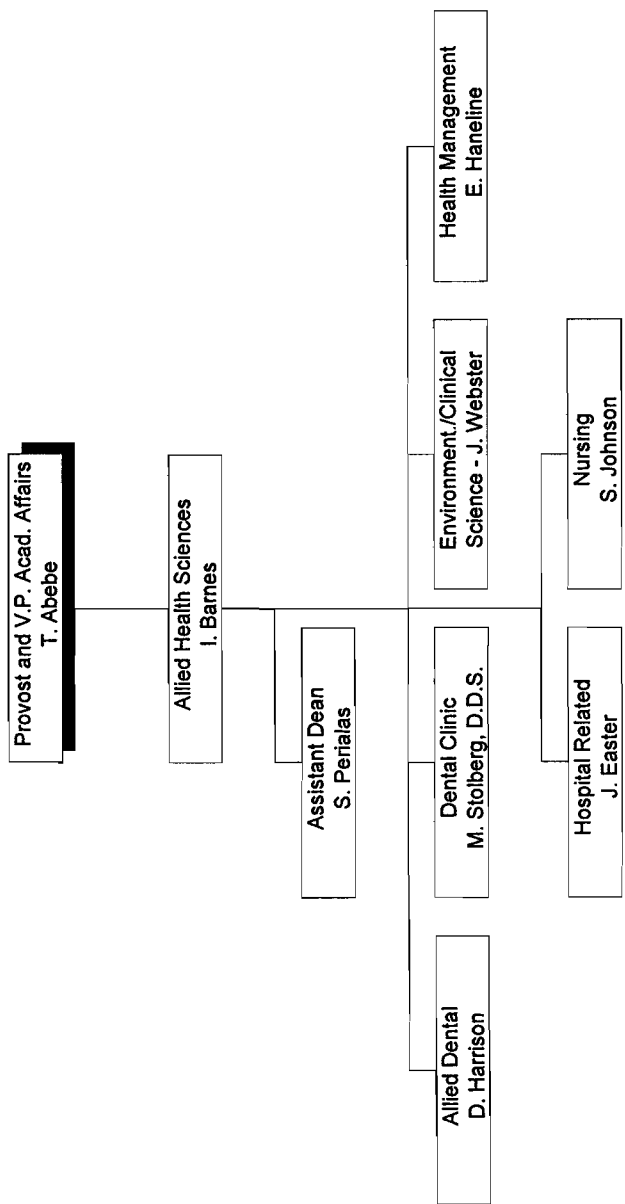
CURRENT AS OF DECEMBER 1, 1995

FERRIS STATE UNIVERSITY
OFFICE OF ACADEMIC AFFAIRS



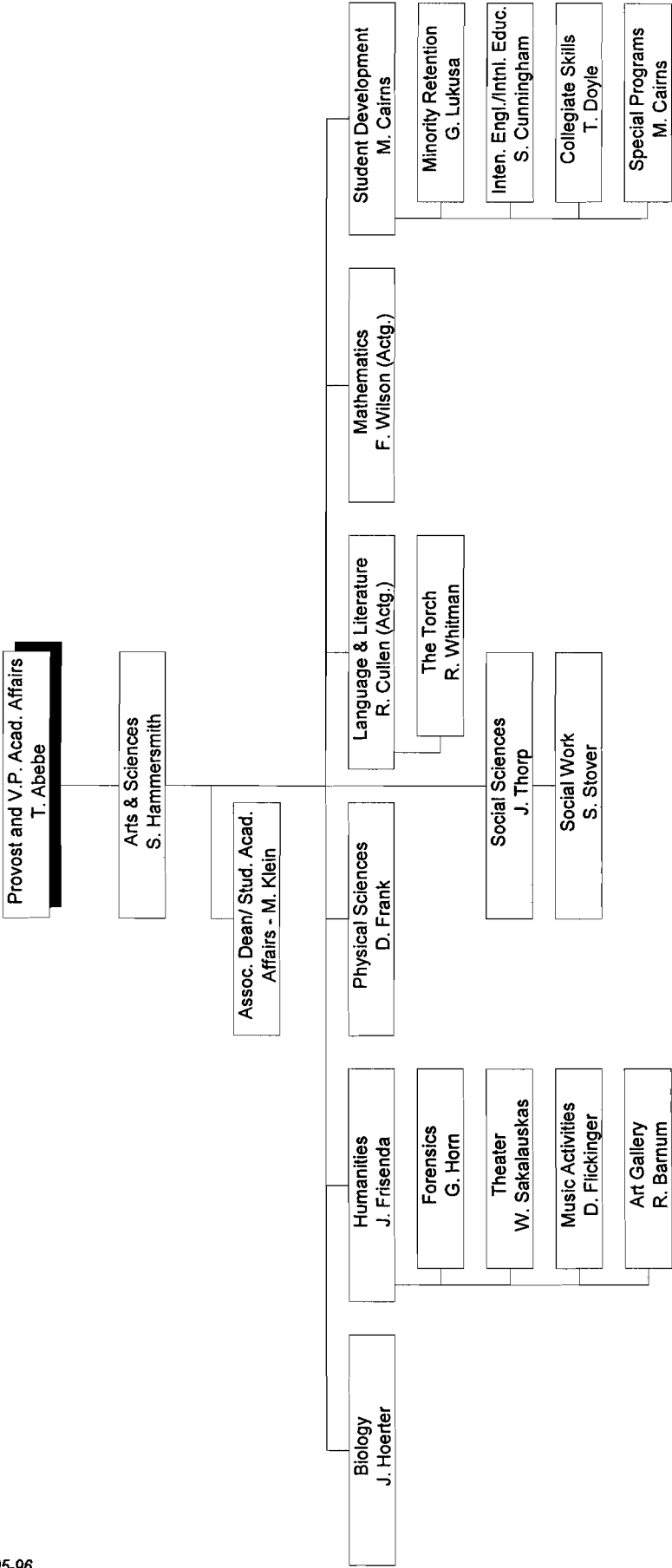
CURRENT AS OF DECEMBER 1, 1995

FERRIS STATE UNIVERSITY
ACADEMIC AFFAIRS DIVISION
COLLEGE OF ALLIED HEALTH SCIENCES



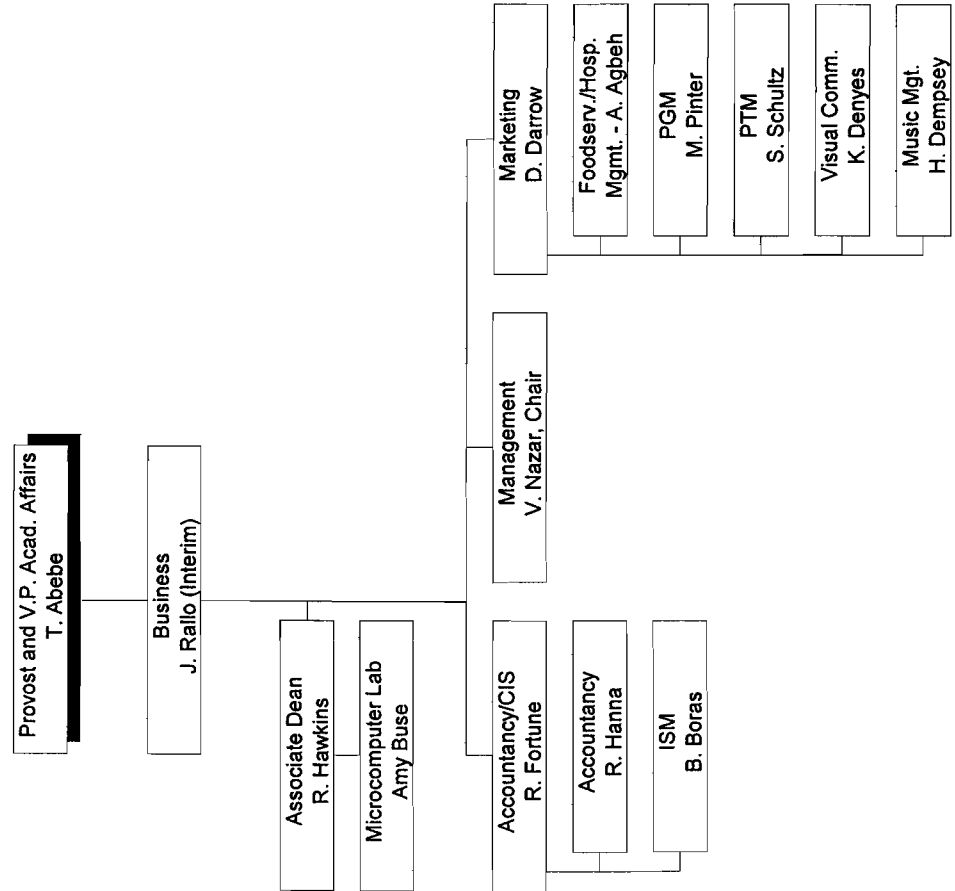
CURRENT AS OF DECEMBER 1, 1995

FERRIS STATE UNIVERSITY
ACADEMIC AFFAIRS DIVISION
COLLEGE OF ARTS & SCIENCES



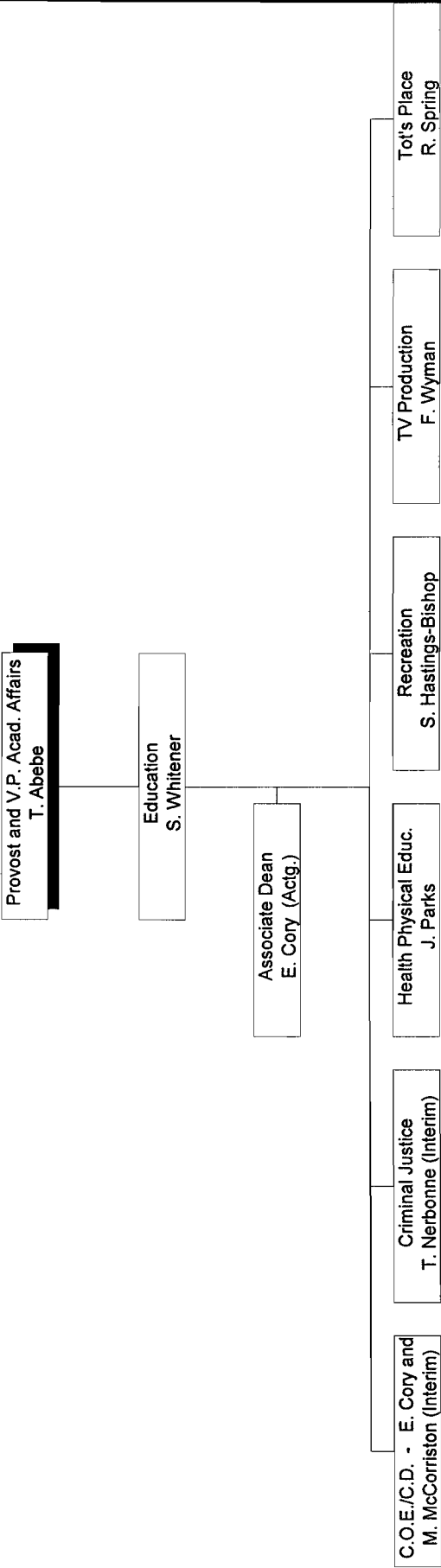
CURRENT AS OF DECEMBER 1, 1995

FERRIS STATE UNIVERSITY
ACADEMIC AFFAIRS DIVISION
COLLEGE OF BUSINESS



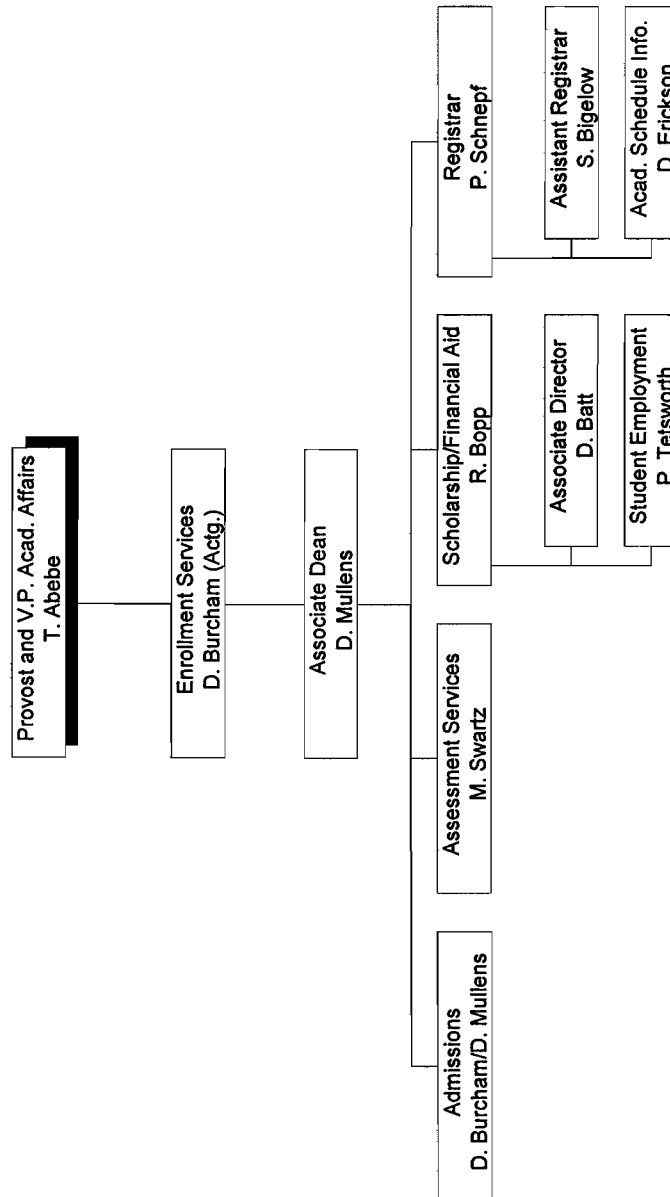
CURRENT AS OF DECEMBER 1, 1995

FERRIS STATE UNIVERSITY
ACADEMIC AFFAIRS DIVISION
COLLEGE OF EDUCATION



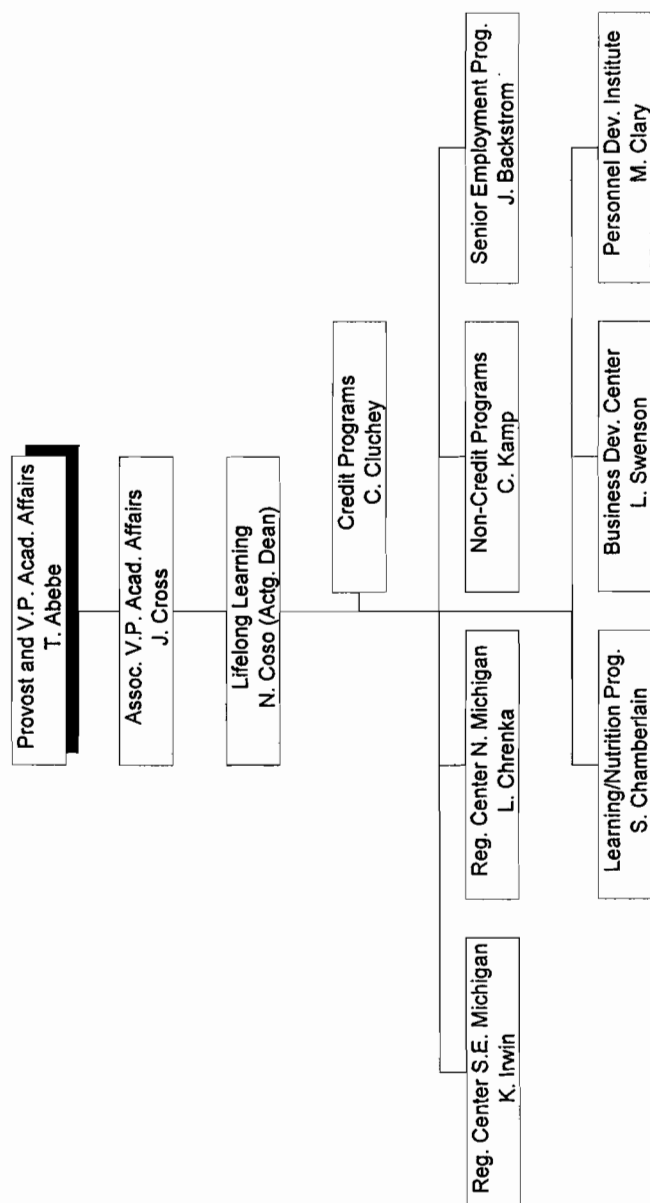
CURRENT AS OF DECEMBER 1, 1995

FERRIS STATE UNIVERSITY
ACADEMIC AFFAIRS DIVISION
ENROLLMENT SERVICES



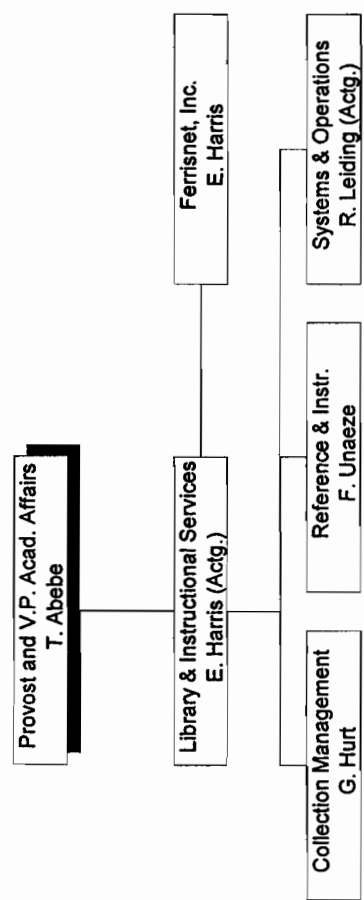
CURRENT AS OF DECEMBER 1, 1995

FERRIS STATE UNIVERSITY ACADEMIC AFFAIRS DIVISION LIFELONG LEARNING



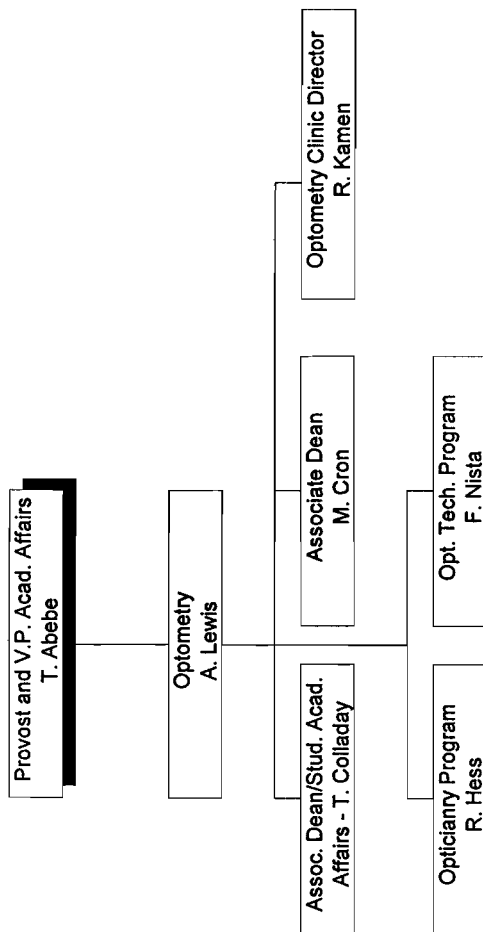
CURRENT AS OF DECEMBER 1, 1995

FERRIS STATE UNIVERSITY
ACADEMIC AFFAIRS DIVISION
LIBRARY & INSTRUCTIONAL SERVICES



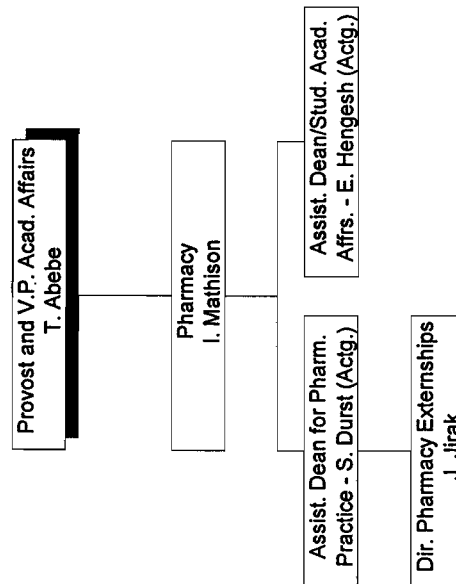
CURRENT AS OF DECEMBER 1, 1995

FERRIS STATE UNIVERSITY
ACADEMIC AFFAIRS DIVISION
COLLEGE OF OPTOMETRY



CURRENT AS OF DECEMBER 1, 1995

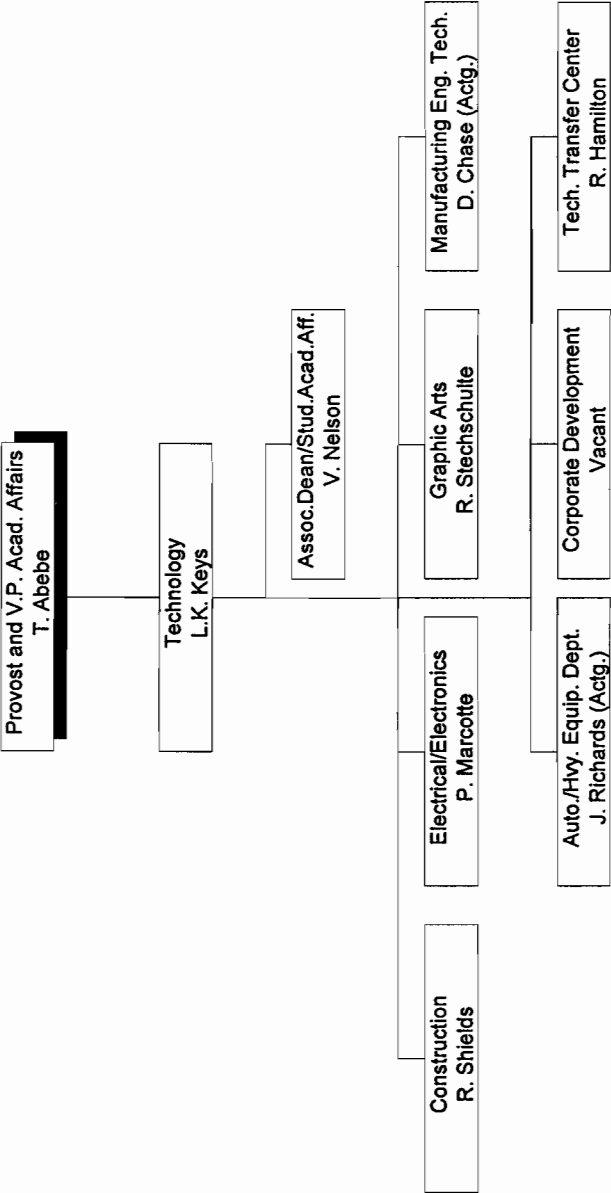
FERRIS STATE UNIVERSITY
ACADEMIC AFFAIRS DIVISION
COLLEGE OF PHARMACY



CURRENT AS OF DECEMBER 1, 1995

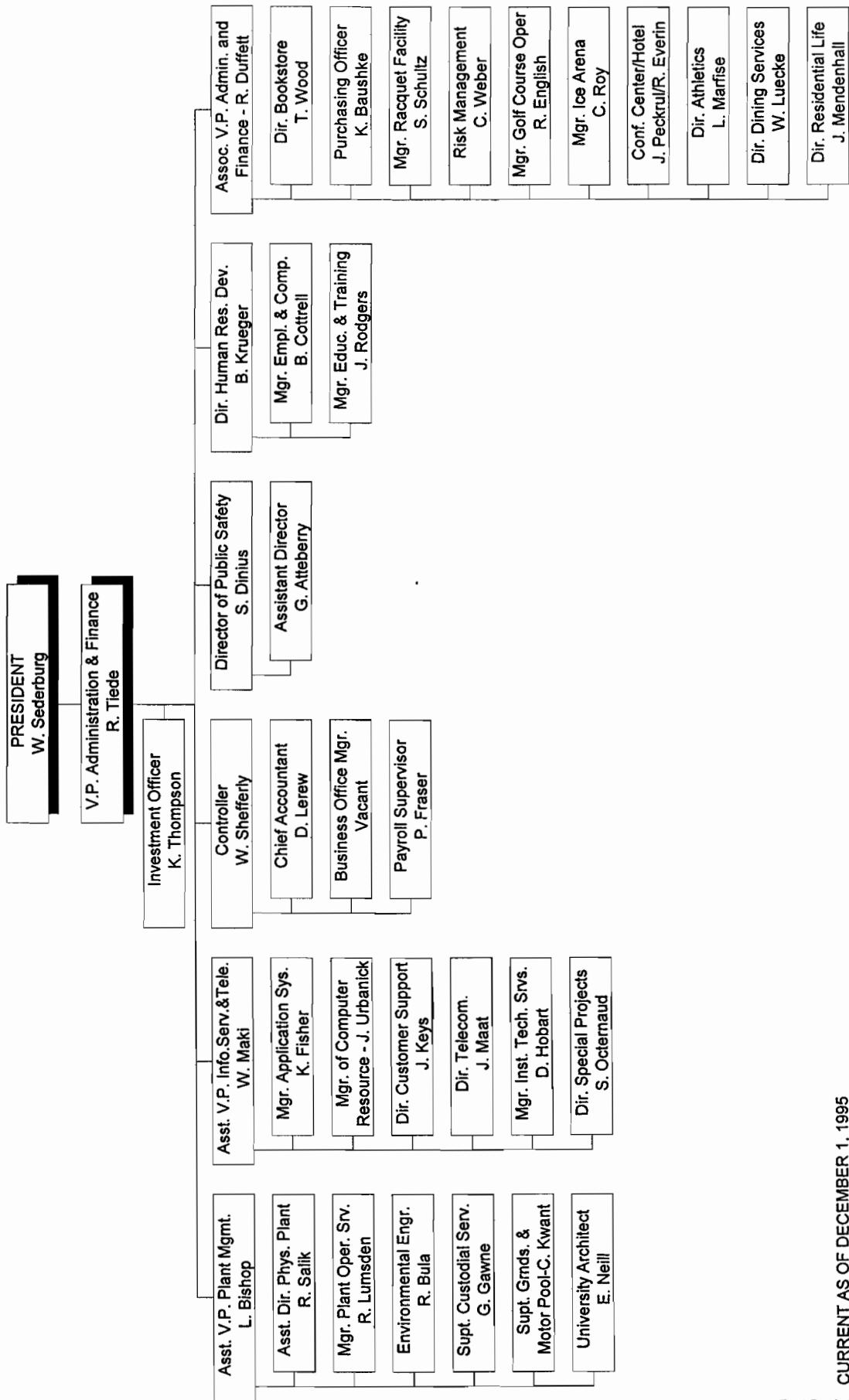
ORGANIZATIONAL CHARTS

FERRIS STATE UNIVERSITY
ACADEMIC AFFAIRS DIVISION
COLLEGE OF TECHNOLOGY



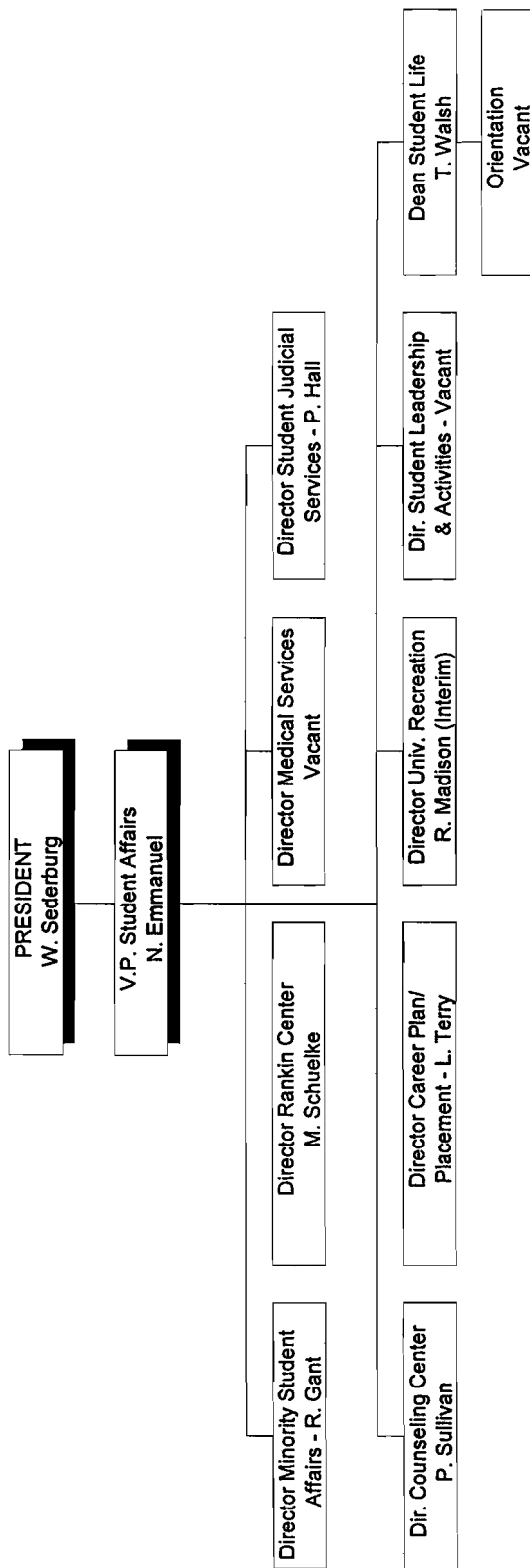
CURRENT AS OF DECEMBER 1, 1995

FERRIS STATE UNIVERSITY
OFFICE OF VICE PRESIDENT FOR ADMINISTRATION AND FINANCE



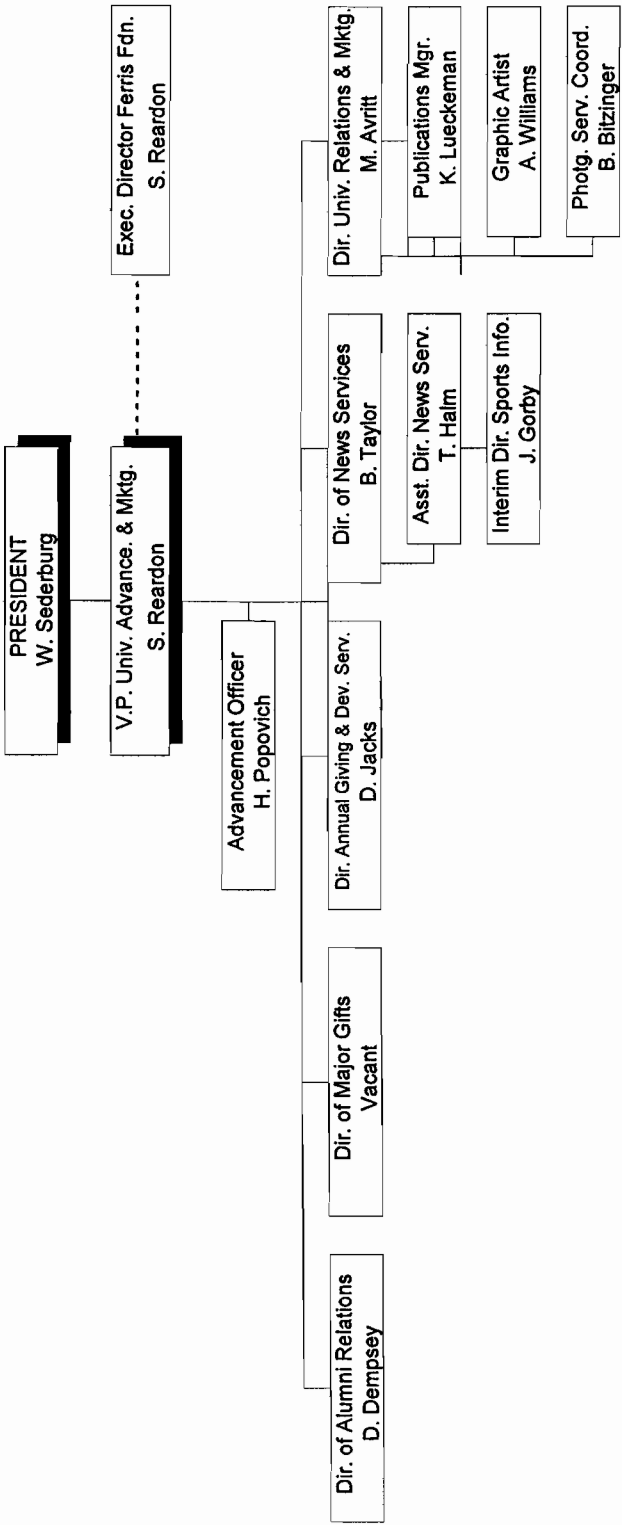
CURRENT AS OF DECEMBER 1, 1995

FERRIS STATE UNIVERSITY
STUDENT AFFAIRS DIVISION



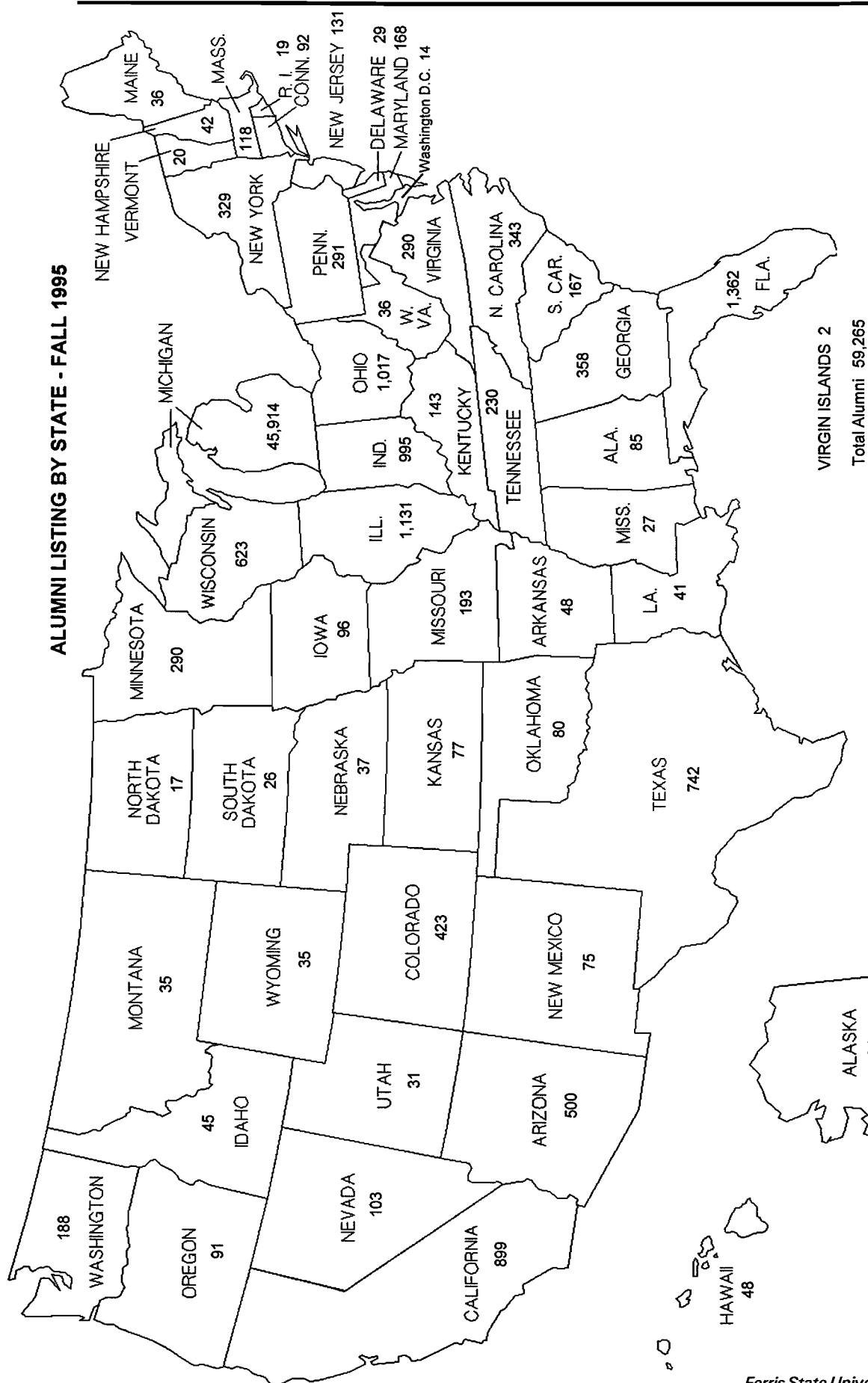
CURRENT AS OF DECEMBER 1, 1995

FERRIS STATE UNIVERSITY
UNIVERSITY ADVANCEMENT AND MARKETING



CURRENT AS OF DECEMBER 1, 1995

Alumni



Source: *Yiddishkeit: A document*

FERRIS STATE UNIVERSITY

SUMMARY OF PLACEMENT ACTIVITY FOR 1993-94 GRADUATES

SCHOOL/DEGREE	EMPLOYED				CONTINUING EDUCATION								Not Seeking Employment		Seeking Employment NO.	Seeking Employment %	TOTAL RESPONSE NUMBER	UNKNOWN NUMBER	RESPONSE RATE %	TOTAL GRADS NO.
	Related Field		Unrelated		FERRIS				OTHER INSTITUTION				Seeking Employment							
	NO.	%	NO.	%	Undergrad.	Graduate	NO.	%	Undergrad.	Graduate	NO.	%	NO.	%						
ALLIED HEALTH SCI Baccalaureate Associate	98	82.4	7	5.9	2	1.7	0	0.0	0	0.0	0	0.0	1	0.8	11	9.2	119	45	72.6	
	133	69.6	4	2.1	42	22.0	0	0.0	0	0.0	0	0.0	0	0.0	12	6.3	191	42	82.0	
ARTS & SCIENCES Baccalaureate Associate	34	57.6	6	10.2	3	5.1	0	0.0	0	0.0	10	16.9	0	0.0	6	10.2	59	17	77.6	
	17	14.2	4	3.3	90	75.0	0	0.0	8	6.7	0	0.0	0	0.0	1	0.8	120	16	88.2	
BUSINESS Masters Baccalaureate Associate	9	90.0	0	0.0	0	0.0	0	0.0	0	0.0	0	0.0	0	0.0	1	10.0	10	4	71.4	
	423	68.4	95	15.4	4	0.6	4	0.6	3	0.5	8	1.3	4	0.6	77	12.5	618	190	76.5	
	21	16.0	3	2.3	91	69.5	0	0.0	8	6.1	0	0.0	1	0.8	7	5.3	131	16	89.1	
EDUCATION Masters Baccalaureate Associate	11	100.0	0	0.0	0	0.0	0	0.0	0	0.0	0	0.0	0	0.0	0	0.0	11	2	84.6	
	133	57.3	35	15.1	0	0.0	3	1.3	1	0.4	1	0.4	2	0.9	57	24.6	232	56	80.6	
	6	9.1	0	0.0	49	74.2	0	0.0	10	15.2	0	0.0	0	0.0	1	1.5	66	7	90.4	
OPTOMETRY O.D. Baccalaureate Associate	16	100.0	0	0.0	0	0.0	0	0.0	0	0.0	0	0.0	0	0.0	0	0.0	16	15	51.6	
	0	0.0	0	0.0	0	0.0	37	100.0	0	0.0	0	0.0	0	0.0	0	0.0	37	0	100.0	
	14	73.7	2	10.5	2	10.5	0	0.0	0	0.0	0	0.0	0	0.0	1	5.3	19	1	95.0	
PHARMACY Pharm.D. Baccalaureate	4	100.0	0	0.0	0	0.0	0	0.0	0	0.0	0	0.0	0	0.0	0	0.0	4	1	80.0	
	84	96.6	0	0.0	0	0.0	0	0.0	0	0.0	3	3.4	0	0.0	0	0.0	87	33	72.5	
TECHNOLOGY Baccalaureate Associate	240	92.0	10	3.8	1	0.4	0	0.0	2	0.8	1	0.4	0	0.0	7	2.7	261	57	82.1	
	111	33.9	10	3.1	190	58.1	0	0.0	12	3.7	0	0.0	0	0.0	4	1.2	327	39	89.3	
	1,354	58.7	176	7.6	474	20.5	44	1.9	44	1.9	23	1.0	8	0.3	185	8.0	2,308	541	81.0	
TOTAL/AVG. % Placement for 92-93 Graduates	1,383	50.1	230	8.3	695	25.2	39	1.4	67	2.4	31	1.1	24	0.9	291	10.5	2,760	517	84.2	

Source: 1993-1994 Graduates and Their Beginning Salaries
Career Planning and Placement Services

**FERRIS STATE UNIVERSITY
BEGINNING ANNUAL SALARIES FOR ASSOCIATE DEGREE GRADUATES
FOR THE YEAR 1993-1994**

<u>SCHOOL/CURRICULUM</u>	<u>NUMBER REPORTING</u>	<u>AVERAGE SALARY</u>	<u>80% RANGE</u>	
			<u>HIGH</u>	<u>LOW</u>
ALLIED HEALTH SCIENCES				
Dental Hygiene	9	33,367	37,440 -	29,016
Health Information Tech	5	18,100	20,000 -	13,000
Nuclear Medicine Tech	5	30,870	31,680 -	29,760
Nursing Tech	10	22,569	22,880 -	21,840
Radiography (X-Ray)	6	24,295	27,000 -	21,996
ARTS & SCIENCES				
Industrial Chemistry	6	22,800	23,600 -	22,000
BUSINESS	N/A			
EDUCATION	N/A			
OPTOMETRY	N/A			
TECHNOLOGY				
Automotive Service	12	19,682	24,168 -	14,500
Heavy Equipment Service	5	21,506	24,908 -	18,720
Manufacturing Tooling	6	17,707	22,000 -	15,600
Refrig, Htg and A/C	9	22,065	31,200 -	17,680

NOTE : The above table includes only those curriculums where salary information was received from five or more students employed in positions related to their major. Figures do not include any incentive income over and above base salary. (It should be noted that many grads receive additional compensations, such as bonuses and overtime pay.)

Source: 1993-1994 Graduates and Their Beginning Salaries

**FERRIS STATE UNIVERSITY
BEGINNING ANNUAL SALARIES FOR BACCALAUREATE GRADUATES
FOR THE YEAR 1993-1994**

<u>SCHOOL/CURRICULUM</u>	<u>NUMBER REPORTING</u>	<u>AVERAGE SALARY</u>	<u>80% RANGE</u>	
			<u>HIGH</u>	<u>LOW</u>
ALLIED HEALTH SCIENCES				
Health Information Mgt	9	22,762	35,000 -	17,000
Health Systems Mgt	5	23,080	24,960 -	20,000
Ind & Env Health Mgt	13	23,254	28,000 -	16,640
Medical Technology	9	28,502	30,992 -	24,960
ARTS & SCIENCES				
Social Work	11	20,967	24,000 -	18,000
BUSINESS				
Accounting	28	24,099	31,500 -	16,640
Advertising	6	22,313	22,880 -	17,000
Business Administration	35	21,968	27,500 -	16,500
Computer Info Systems	30	28,190	33,050 -	24,000
Finance	11	25,871	28,000 -	21,000
Hospitality Management	9	20,527	25,000 -	14,560
Management	9	20,333	27,050 -	12,480
Marketing	9	19,956	25,000 -	15,000
Marketing/Pro Golf Mgt	21	17,183	22,000 -	13,200
Marketing/Tennis Mgt	8	27,255	37,440 -	18,000
Marketing/Retail	5	17,588	21,320 -	12,500
Marketing/Sales	9	24,090	31,500 -	18,200
Office Auto Systems	6	18,417	22,000 -	14,060
EDUCATION				
Criminal Justice	32	21,716	27,000 -	14,560
TV Production	5	17,972	22,000 -	14,560
OPTOMETRY	N/A			
PHARMACY				
Registered	47	49,150	56,160 -	45,000
Intern Status	14	31,359	41,600 -	20,800
TECHNOLOGY				
Auto & Heavy Equip Mgt	19	25,761	29,000 -	22,776
Construction Mgt	19	28,009	31,800 -	23,000
Elec/Eltr Engr Tech	9	25,593	28,000 -	22,880
HVACR Engr Tech	10	31,684	35,000 -	28,500
Manufacturing Engr Tech	15	30,203	35,300 -	19,760
Plastics Engr Tech	37	32,375	37,000 -	28,992
Product Design Engr Tech	9	27,069	36,400 -	16,640
Surveying Engineering	10	26,044	30,000 -	21,000
Welding Engineering Tech	17	34,135	36,000 -	33,000

NOTE : The above table include only those curriculums where salary information was received from five or more students employed in positions related to their major. Figures do not include any incentive income over and above base salary. (It should be noted that many grads receive additional compensations, such as bonuses and overtime pay.)

Source: 1993-1994 Graduates and Their Beginning Salaries

ALUMNI BY COLLEGE

	<u>Active Alumni</u>	<u>Total Alumni</u>
Allied Health Sciences	8,519	10,956
Arts & Sciences	7,758	14,185
Business	24,681	35,363
Education	6,729	8,360
Optometry	1,703	2,053
Pharmacy	4,717	6,961
Technology	5,158	22,994
Total	59,265	100,872

Source: University Advancement

RECIPIENTS OF ALUMNI AWARDS

Since 1956, Commencement week activities have included the presentation by the Ferris State University Alumni Association of Distinguished Alumni Awards recognizing exceptional career success and noteworthy fidelity and devotion to the University. Distinguished Alumni Award recipients are:

1956
Frederick L. Caldena
Ralph Pino
Nate S. Shapero

1957
Walter R. Braund
Jean DeBoer
Edward M. Sharpe

1958
C. V. Burnett
John H. Butts
Ray M. Hardy
Maurice C. LaClaire
Charles W. Martin
Fred B. Post
W. C. Taggart
Robert H. Wisner

1959
Howard C. Grimes
James T. Jones
Willard J. Nash
Arthur R. Sherk

1960
Manley M. Ellis
Thomas F. Heatley
Thaddeus B. Taylor

1961
C. V. Buttleman
Merta L. Reed
Gideon E. Smith

1962
Walter Armbruster
Joseph C. Hirschfield
Hattie Smith Lear Baribeau

1963
Clare F. Jarecki
Charles S. Neithercut
John W. Tenny

1964
Bess Rose Fishman
Lewie H. Hull
J. Arthur Pino

1965
Leo F. Duggan
C. Gordon Phillips
George C. Quinnell

1966
L. Dale Faunce
Carlton H. Runcieman

1967
Albert F. Cleveland
Roy A. Darling
James C. Finney, Sr.
Willard J. Nash

1968
Norman E. Borgerson
Ann W. Sawasky
Reuben E. Trippensee

1969
Carroll Boutell
Elmon Cataline

1970
Charles E. Fairman
Ethel Taylor Pierce
John Stahlin

1971
Stanley J. Byington
Gerald McKessy
Raymond Sines

1972
Clarence Freeman
Delbert Long
Ramsay Wardrop

1973
Bert C. Brennan
Albert B. Doherty, III
John W. Spicer
Fred A. Westerman

1974
Frank Curtis
Phillip Runkel
Colin Smith

1975
Rex O. Graff
Fred Schnarr
Chester I. Williams

1976
S. John Byington
Gerald L. DeHaan
Clare G. Johnson
H. James Renaud

1977
James R. Hess
Florence I. Holden
Robert J. Norsworthy

1978
Ruth Gibson Butler
Leonard W. Gopp
Robert C. Redman

1979
Peggy A. Frazier
Thomas P. Scholler
Lee A. Westberg

1980
E. Elaine Davies
Kuno Hammerberg
John F. Mangrum

1981
Alvin L. Burridge
Floyd E. Curtis
Avis J. Ericson

1982
Howard L. Dell
Jack M. Newcomb
Rena D. Westra

1983
Douglas W. Call
Darnell E. Cole
Margaret Ethel Denise
Elton "Ott" Gingrich

1984
Richard C. Andresen
Edmund D. Farhat
Kenneth J. Hicks

1985
Jean D. Deupree
Arnold L. Johnson
Bruce N. Parsons

1986
Richard L. Antonini
Bertil G. Carlson
Kenneth L. Cook
Jack D. Lewis

1987
Maurice Q. Bectel
Roger W. Anderson
H. Kearney Walters

1988
Marjorie L. Fleming
George H. Ryan, Sr.
Gordon E. Kamstra
Charles E. Lippert

1989
Albert J. Coudron
Kenneth W. Kirk
George J. Menoutes
Jerry R. Tubbs

1990
Philip E. Hoffman
Dennis B. Lerner
Roger G. Stoll
Clinton L. Swinehart

1991
Darroll Z. Howard
Jane Reagan Jones
Kenneth E. McCourt

1992
Paul E. Boyer
Richard E. Hurst
Carolyn C. Kilpatrick
James Middaugh

1993
Eugene A. DeFouw
Douglas P. Johnson
Barbara L. Ottinger
Louis M. Sesti

1994
Joseph C. Barney, Jr.
Vernita Burrows
R. Thomas Cook
Kenneth Hoexum
Robert N. Tenney

1995
William Adrian
Jack Bates
John Bradac
Lawrence Marfechuk
Ronald Snead

Source: Spring Commencement Program

Budget

**BUDGETARY PLANNING AND ANALYSIS
SUMMARY OF 1995-96 TUITION/FEES AND ROOM/BOARD
MICHIGAN PUBLIC UNIVERSITIES**

	FY-96 TUITION	TUITION RANK	FY-96 RM/BRD	ROOM/ BOARD RANK	FY-96 TOTAL COST	TOTAL COST RANK
University of Michigan	5,842	1	4,897	1	10,739	1
Michigan State	4,920	2	3,828	12	8,748	2
Ferris	3,532	7	4,499	2	8,031	3
Michigan Tech	3,843	4	4,137	7	7,980	4
Oakland	3,551	6	4,165	6	7,716	5
Eastern Michigan	3,430	8	4,272	4	7,702	6
Lake Superior	3,396	10	4,290	3	7,686	7
Western Michigan	3,415	9	4,097	8	7,512	8
Grand Valley	3,108	14	4,180	5	7,288	9
Saginaw Valley	3,259	12	3,990	10	7,249	10
Central Michigan	3,142	13	4,036	9	7,178	11
Northern Michigan	2,891	15	3,922	11	6,813	12
Wayne State	3,581	5				
UM - Flint	3,304	11				
UM - Dearborn	3,896	3				
UNWEIGHTED AVERAGE	3,674		4,193		7,887	

Sources: Presidents Council, State Universities of Michigan
November 15, 1995

BUDGET

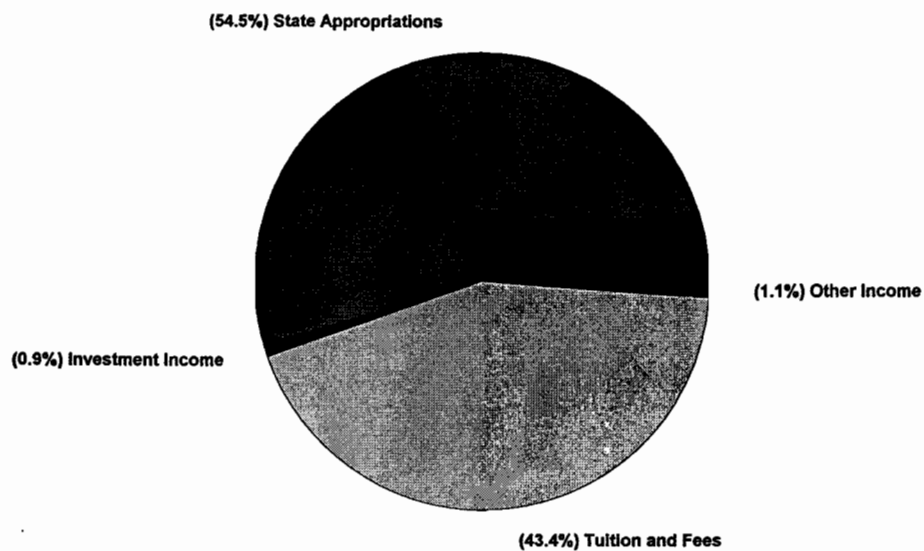
FERRIS STATE UNIVERSITY FY-1995-96 GENERAL FUND OPERATING BUDGET (AMOUNTS IN THOUSANDS)

	FY-95/96 OPERATING BUDGET
REVENUES	
STATE APPROPRIATIONS	\$44,315
TUITION/FEES	35,317
INVESTMENT INCOME	750
OTHER INCOME	914
TOTAL REVENUES	\$81,296
EXPENDITURES	
SALARY/WAGE/BENEFIT	\$67,216
SUPPLY/EXPENSE/TRANSFER	11,254
DEFERRED MAINTENANCE	700
UTILITIES	1,795
STUDENT ASSISTANCE	2,472
EQUIPMENT	543
TOTAL EXPENDITURES	\$83,980
REVENUE/EXPENDITURE NET	(2,684)
PRIOR YEAR CARRYOVER BALANCE	3,050
BALANCE WITH CARRYOVER	\$366

Source: Budget Office, General Fund Operating Budget FY-95/96

**FERRIS STATE UNIVERSITY
REVENUE SUMMARY
(AMOUNTS IN THOUSANDS)**

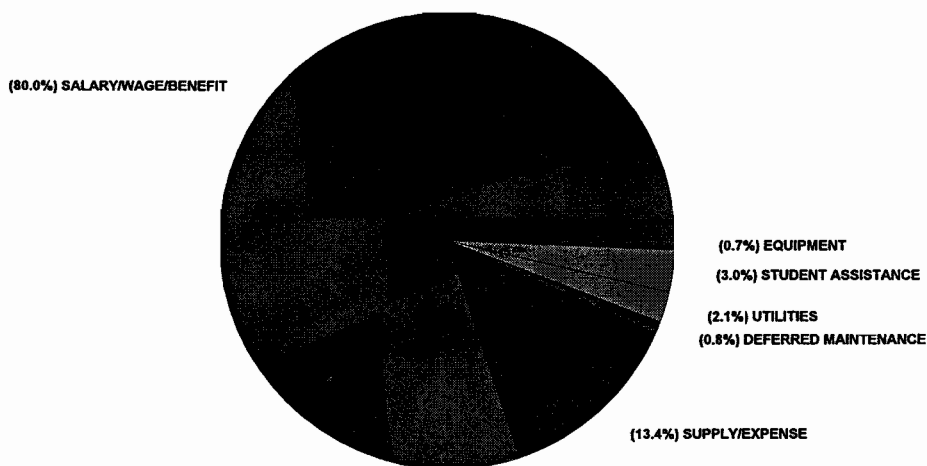
	AMOUNT	PERCENT
STATE APPROPRIATIONS	\$44,315	54.5%
INVESTMENT INCOME	750	0.9%
TUITION AND FEES	35,317	43.4%
OTHER INCOME	914	1.1%
TOTAL	\$81,296	



Source: Budget Office, General Fund Operating Budget FY-95/96

**FERRIS STATE UNIVERSITY
EXPENDITURE SUMMARY
(AMOUNTS IN THOUSANDS)**

	AMOUNT	PERCENT
SALARY/WAGE/BENEFIT	\$67,216	80.0%
SUPPLY/EXPENSE/TRANSFER	11,254	13.4%
DEFERRED MAINTENANCE	700	0.8%
UTILITIES	1,795	2.1%
STUDENT ASSISTANCE	2,472	3.0%
EQUIPMENT	543	0.7%
TOTAL	\$83,980	



Source: Budget Office, General Fund Operating Budget FY-95/96

Facilities

SUMMARY OF ON CAMPUS FACILITIES OWNED OR RENTED BY FERRIS STATE UNIVERSITY

BUILDING	SQUARE FEET	CUBIC FEET	YEAR CONSTRUCTED OR IMPROVED
GENERAL FUNDED FACILITIES			
ALUMNI BUILDING	34,600	510,000	1929
ARTS & SCIENCE COMMONS	67,724	935,953	1996
AUTOMOTIVE CENTER	77,000	1,235,400	1956-88
BISHOP HALL	50,900	480,600	1968-87
BUSINESS BUILDING	90,600	700,000	1970
CARILLON TOWER	100	4,900	1968
CONSTRUCTION TECHNOLOGY	23,400	500,000	1962
CREATIVE ARTS	7,200	93,900	1965
DEPT OF PUBLIC SAFETY	5,168	41,144	1959-83
EWIGLEBEN SPORTS COMPLEX	39,800	567,950	1974-82
GENERAL SERVICES BLDG	27,143	490,330	1984-88
GROUNDS FACILITIES	9,032	98,856	1979
HEALTH CENTER (50%)	9,200	91,250	1959-67
HEALTH & PHYS EDUC	96,300	2,220,000	1962
HEAVY EQUIPMENT TECH	52,000	1,188,000	1987
INSTR RESOURCE CENTER	54,700	630,000	1969
JOHNSON HALL	33,600	328,600	1959
LIBRARY	57,000	723,900	1967
MCKESSY HOUSE	6,534	52,000	1989
MUSIC CENTER	10,000	137,900	1962
PENNOCK HALL	50,900	480,600	1968-77
PHARMACY BUILDING	62,200	1,214,300	1972
PLASTICS TECHNOLOGY	18,800	230,700	1987
POWER PLANT	19,900	421,900	1955-88
PRAKKEN BUILDING	42,100	503,900	1952
PRESIDENTS RESIDENCE	6,140	49,120	1874
SCIENCE BUILDING	107,300	1,680,000	1955-67
STARR BUILDING	86,400	1,607,200	1962
SWAN BUILDING	131,600	1,685,400	1966-88
TOP TAGGART EAST	400	3,000	1965
TOP TAGGART WEST	800	6,000	1970
VFS ALLIED HEALTH BLDG	67,400	1,493,800	1979
WEST BUILDING	23,700	292,500	1952-85
WEST COMMONS	19,800	269,300	1968
TOTAL GENERAL FUNDED	1,389,441	20,968,403	
FSU'S GRAND TOTAL	3,181,029	42,307,939	

Source: University Architect

FACILITIES

SUMMARY OF ON CAMPUS FACILITIES OWNED OR RENTED BY FERRIS STATE UNIVERSITY

BUILDING	SQUARE FEET	CUBIC FEET	YEAR CONSTRUCTED OR IMPROVED
NON-GENERAL FUNDED FACILITIES			
BOND HALL	90,500	820,400	1966
BROPHY HALL	47,000	482,750	1962
CARLISLE HALL	47,200	423,000	1957
CLARK HALL	41,500	360,900	1960
CONFERENCE CENTER	25,238	380,000	1990
COPY CENTER	4,064	39,872	1969
COUNTY STORAGE (RENTED)	20,000	240,000	1989
CRAMER HALL	91,700	824,700	1969
EAST CAMPUS APARTMENTS	72,600	636,200	1955
HALLISY HALL	44,700	406,000	1958
HEALTH CENTER (50%)	9,200	91,250	1959-67
HELEN FERRIS HALL	44,300	383,000	1956
HENDERSON HALL	44,900	405,500	1965
HOLIDAY INN HOTEL COMPLEX	72,789	582,000	1990
ICE ARENA	64,900	925,850	1974
KATKE GOLF CART STORAGE	2,800	27,600	1984
KATKE CLUBHOUSE/MAINT BLDG	5,600	83,200	1974
KNOLLCREST COMMONS	11,094	292,860	1961
MASSELINK COMPLEX	104,700	942,300	1955-58
MCNERNEY HALL	47,000	482,750	1962
MERRILL HALL	51,700	515,050	1961
M.R.P.C.	16,836	192,612	1898
MILLER HALL	47,382	444,245	1963
PICKELL HALL	50,400	468,600	1964
PUTERBAUGH HALL	46,400	436,400	1965
RACQUET BALL FACILITY	38,800	994,000	1980-87
RANKIN CENTER	109,100	1,385,900	1958-87
SOUTH CAMPUS APARTMENTS	53,200	466,400	1958
SOUTH COMMONS	32,460	400,217	1963
SOUTHWEST COMMONS	19,500	253,600	1965-86
SOUTHWEST POWER PLANT	2,200	33,200	1964
TAGGART HALL	47,800	450,600	1964
TRAVIS HALL	51,700	515,050	1961
VANDERCOOK HALL	42,350	394,000	1957
WARD HALL	41,320	407,260	1963
WEST CAMPUS APARTMENTS	242,870	5,100,270	1993-94
WEST CAMPUS COMMUNITY BLDG	5,785	52,000	1996
TOTAL NON-GENERAL FUNDED	1,791,588	21,339,536	



FERRIS STATE UNIVERSITY

is an Equal Opportunity/Affirmative Action

institution. Ferris complies with all applicable

laws, including Title IX of the Education

Amendments of 1972 and the Rehabilitation

Act of 1973, which prohibit discrimination in

educational programs or admissions on the

basis of age, sex, color, race, national origin,

handicap or other prohibited matters.

Inquiries may be addressed to Affirmative

Action and Title IX Compliance Office, 151

Prakken Building, Ferris State University, 420

Oak Street, Big Rapids, MI 49307-2020.