



4366 Military St  
Detroit, MI 48210

4321 Military St  
Detroit, MI 48210

School Leader: *Joseph Tenbusch*

Grades Served: *K-12*

Year Opened: *1998*

Current Charter Contract Term: *2015-2019*

Educational Service Provider: *American Promise Schools*

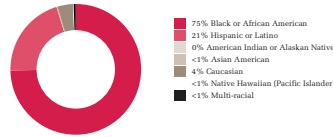
Resident District: *Detroit Public Schools Community District*

2016-17 Total Revenue: *\$10,644,754*

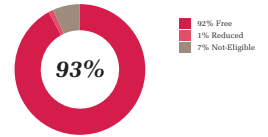
2016-17 Total Expenditures: *\$9,223,729*

2016-17 Fund Balance *\$3,182,464*

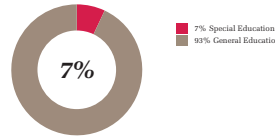
### Ethnicity



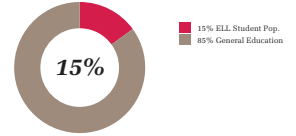
### Free & Reduced Price Lunch Eligibility



### General & Special Education Status



### English Language Learners (ELL)



## Mission Statement

The mission of the Voyageur School District is to prepare students to be College Ready and College Bound. This mission will be achieved through the fundamental pillars of Discipline, Focus and Hard-Work; and the Sustenance pillars of Perseverance and Character.

## M-STEP Proficiency

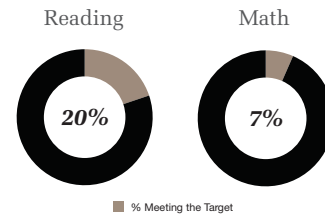
Grade	Subject	Prior Year 2015-2016	Current Year 2016-2017	Resident District	State
Grade 3	ELA	30.5%	15.9%	9.9%	44.1%
	Math	17.9%	15.7%	12.3%	46.8%
Grade 4	ELA	30.9%	28.4%	10.4%	44.2%
	Math	28.4%	20.0%	8.5%	42.0%
Grade 5	ELA	21.8%	22.9%	14.2%	51.1%
	Math	6.8%	7.2%	0.0%	35.0%
Grade 6	ELA	22.2%	5.1%	9.4%	43.6%
	Math	3.2%	3.8%	0.0%	34.2%
Grade 7	ELA	20.0%	23.9%	11.9%	44.8%
	Math	8.2%	5.4%	5.8%	36.2%
Grade 8	ELA	46.4%	20.0%	16.1%	48.0%
	Math	10.1%	3.5%	6.8%	33.5%
Grade 11	ELA (SAT)	27.4%	23.0%	37.0%	60.3%
	Math (SAT)	7.4%	2.0%	13.2%	36.8%

## MAP Growth Percentiles

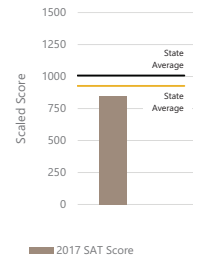
Grade	Conditional Growth Percentile	
	READING	MATH
Grade 2	71.0	28.0
Grade 3	72.0	30.0
Grade 4	44.0	64.0
Grade 5	24.0	12.0
Grade 6	1.0	8.0
Grade 7	30.0	19.0
Grade 8	44.0	26.0

## NWEA MAP Achievement

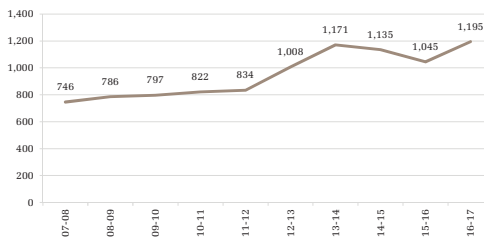
Average NWEA MAP achievement percentile ranking for all students grades 2 through 8



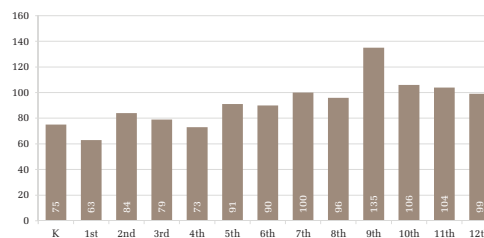
## SAT Total Score



## Enrollment by Year



## Number of Students in Each Grade

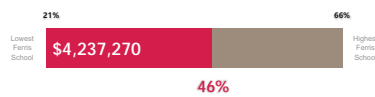


## Charter Contract Compliance

Overall **96%** Board **92%** Academy **99%**

## Academy Spending, as a Percent of Total Expenditures

### Total Instruction



### Total Business & Administration



### Total Business & Administration



## Board Meetings, Attendance, & Position Vacancies

### Board Meetings



### Board Attendance



### Board Position Vacancies

