

Smith Village Street Resurfacing - fse - Flint, Michigan

I. General notes - to be updated as project construction proceeds

- A. Project name - Smith Village Street Resurfacing - Phase A
- B. Scope of work by area and by actions. To be reviewed and corrected as necessary.
 - 1. Phase 1 - Work to be done that is in the right of way.
 - 2. Phase A - Work included in construction of 9 homes: 6 on the west side of Root Street and 3 between Wood and Williams on Root Street . One home has been 70% completed and will be used as a model home.
 - 3. Phase B - Work included in the construction of 27 homes: 13 on West side of Root Street and 14 on East side of Root Street, all between Wood and Williams. One home has been 70% completed and will be used as a model home.
- C. Laundry list of actions to take (at random)
 - 1. ✓ REPLACE EXISTING LOW PRESSURE GAS MAIN - Consumers
 - 2. ✓ REMOVE 1,100 TON BY COLD MILLING (CORRECT TERMINOLOGY?)
 - 3. ✓ PLACE 550 TONS OF NEW BITUMINOUS 1100L 20AA PAVEMENT
 - 4. ✓ PLACE 550 TONS OF NEW BITUMINOUS 1100T 20AA
 - 5. ✓ REMOVE & REPLACE 4,060 LINEAR FEET OF CURB & GUTTER (REPLACE WITH MOUNTABLE CURB)
 - 6. ✓ REMOVE 1,945 SQUARE YARDS OF EXISTING SIDEWALKS
 - 7. ✓ CONSTRUCT 2,058 SQUARE YARDS OF 4" SIDEWALKS INCLUDING 4" SAND SUBASE
 - 8. ✓ REMOVE 356 SQUARE YARDS OF DRIVEWAYS
 - 9. ✓ CONSTRUCT 190 SQUARE YARDS OF 4" & 6" DRIVEWAYS
 - 10. ✓* CONSTRUCT CONCRETE 1,322 SQUARE FEET OF SIDEWALK RAMPS (CHECK SIDEWALK RAMP THICKNESS)
 - 11. ✓ INSTALL NEW SANITARY SEWER LEADS
 - 12. ✓ INSTALL NEW 6" WATER MAIN TO REPLACE ABANDONED 3" LINE (ROOT ST BETWEEN WOOD & MARY)
 - 13. ✓ INSTALL NEW WATER MAIN SERVICE LEADS
 - 14. ✓ WATER AND SANITARY LEADS WILL EXTEND 5' ONTO THE PROPERTY
 - 15. ✓ CUT & REMOVE & DISPOSE OF BITUMINOUS PAVEMENT (FOR UTILITY CUTS)
 - 16. ✓ EXCAVATE & INSTALL UTILITIES, TOP 3" WILL BE 21AAA LIMESTONE.
 - 17. ✓ AFTER ALL LEADS ARE INSTALLED CONTRACTOR WILL COLD MILL 3". IN SOME PLACES THIS WILL BE 3" OF 21AA (see B above)
 - 18. ✓ GRANULAR MATERIAL UNDERLYING THE 3" LIMESTONE WILL BE REMOVED TO A DEPTH EQUAL TO THE SURROUNDING CONCRETE (IF PRESENT), COMPACTED AND CONCRETE POURED
 - 19. ✓ A GEOGRID AND FABRIC WILL THEN BE PLACED UPON THE EXPOSED SURFACE (IN SOME PLACES THIS WILL BE CONCRETE OR

ASHPHALT DUE TO VARYING ASPHALT THICKNESS).

20. ✓ 2 - 1 1/2 LAYERS OF ASPHALT WILL BE PLACED . (see earlier item)
21. ✓ ADJUST VERTICAL ELEVATIONS AT DRAINAGE STRUCTURES.
22. ✓ REMOVE TREES AS REQUIRED.

D. Those involved

1. Civil Engineer - Flint Surveying and Engineering Co. (fce)
 - a) *Curt Carlson, P.E. - Principal
 - b) *Rich Esser, P.E. - Project Engineer
2. City of Flint
 - a) Alex Thomas - Director of DCED
 - b) *Suzanne Wilcox - Project Administrator, DCED (fce's point of contact)
 - c) Jack Sargent, P.E. - City Engineer, DPW
 - d) *Hans Kuhlmann - Flint City, Engineering DPW
 - e) Derrick Jones - Purchasing Department
 - f) Charles Winfree - Contract Office
 - g) *Jesse Binion - Ombudsman
 - h) *Roger Clapp - City of Flint Water Department
 - i) *Dan Larson - Sanitary Sewer Supervisor
 - j) Peter Bade - City Attorney
3. DCED
 - a) *Ned Zimmerman - consultant to DCED
4. Forrest Homes
 - a) *Gary Grossman
5. Consumers Energy
 - a) *Jimmy King - may attend later
 - b) *Nate Warren - may attend later
 - c) *Pipe line contractor - may attend later
 - d) *In - site form contractor - may attend later
6. Ace Asphalt - paving contractor
 - a) *Mark Marshall - Ace Asphalt
7. Zito - utility contractor
 - a) *Dan Zito - Project manager - Zito Construction
8. Planning and scheduling consultant
 - a) *Ralph J. Stephenson, P.E.

E. Key dates

1. Notice to proceed issued ?
2. Contract completion time = 90 calendar days
 - a) November 1, 2000 P.M. (wd)

II. **Project Meeting #1 - COF conference room - City Hall - City of Flint, Michigan - August 23, 2000 (wd 166).**

- A. Project name - Smith Village Steet Resurfacing - Phase A
- B. Project characteristics
 1. Phases
 - a) Phase A - current contract

- b) Phase B
- c) Phase C
- C. Laundry list of actions to take (at random)
 1. ✓ REPLACE EXISTING LOW PRESSURE GAS MAIN - Consumers
 2. ✓ REMOVE 1,100 TON BY COLD MILLING (CORRECT TERMINOLOGY?)
 3. ✓ PLACE 550 TONS OF NEW BITUMINOUS 1100L 20AA PAVEMENT
 4. ✓ PLACE 550 TONS OF NEW BITUMINOUS 1100T 20AA
 5. ✓ REMOVE & REPLACE 4,060 LINEAR FEET OF CURB & GUTTER (REPLACE WITH MOUNTABLE CURB)
 6. ✓ REMOVE 1,945 SQUARE YARDS OF EXISTING SIDEWALKS
 7. ✓ CONSTRUCT 2,058 SQUARE YARDS OF 4" SIDEWALKS INCLUDING 4" SAND SUBASE
 8. ✓ REMOVE 356 SQUARE YARDS OF DRIVEWAYS
 9. ✓ CONSTRUCT 190 SQUARE YARDS OF 4" & 6" DRIVEWAYS
 10. ✓* CONSTRUCT CONCRETE 1,322 SQUARE FEET OF SIDEWALK RAMPS (CHECK SIDEWALK RAMP THICKNESS)
 11. ✓ INSTALL NEW SANITARY SEWER LEADS
 12. ✓ INSTALL NEW 6" WATER MAIN TO REPLACE ABANDONED 3" LINE (ROOT ST BETWEEN WOOD & MARY)
 13. ✓ INSTALL NEW WATER MAIN SERVICE LEADS
 14. ✓ WATER AND SANITARY LEADS WILL EXTEND 5' ONTO THE PROPERTY
 15. ✓ CUT & REMOVE & DISPOSE OF BITUMINOUS PAVEMENT (FOR UTILITY CUTS)
 16. ✓ EXCAVATE & INSTALL UTILITIES, TOP 3" WILL BE 21AAA LIMESTONE.
 17. ✓ AFTER ALL LEADS ARE INSTALLED CONTRACTOR WILL COLD MILL 3". IN SOME PLACES THIS WILL BE 3" OF 21AA (see B above)
 18. ✓ GRANULAR MATERIAL UNDERLYING THE 3" LIMESTONE WILL BE REMOVED TO A DEPTH EQUAL TO THE SURROUNDING CONCRETE (IF PRESENT), COMPACTED AND CONCRETE POURED
 19. ✓ A GEOGRID AND FABRIC WILL THEN BE PLACED UPON THE EXPOSED SURFACE (IN SOME PLACES THIS WILL BE CONCRETE OR ASHPHALT DUE TO VARYING ASPHALT THICKNESS).
 20. ✓ 2 - 1 1/2 LAYERS OF ASHPHALT WILL BE PLACED . (see earlier item)
 21. ✓ ADJUST VERTICAL ELEVATIONS AT DRAINAGE STRUCTURES.
 22. ✓ REMOVE TREES AS REQUIRED.
- D. Those involved - *indicates those expected to attend meeting on August 23, 2000 (wd 166)
 1. Civil Engineer - Flint Surveying and Engineering Co. (fce)
 - a) *Curt Carlson, P.E. - Principal
 - b) *Rich Esser, P.E. - Project Engineer
 2. City of Flint
 - a) Alex Thomas - Director of DCED

- b) *Suzanne Wilcox - Project Administrator, DCED (fce's point of contact)
 - c) Jack Sargent, P.E. - City Engineer, DPW
 - d) *Hans Kuhlmann - Flint City, Engineering DPW
 - e) Derrick Jones - Purchasing Department
 - f) Charles Winfree - Contract Office
 - g) *Jesse Binion - Ombudsman
 - h) *Roger Clapp - City of Flint Water Department
 - i) *Dan Larson - Sanitary Sewer Supervisor
 - j) Peter Bade - City Attorney
3. DCED
- a) *Ned Zimmerman - consultant to DCED
4. Forrest Homes
- a) *Gary Grossman
5. Consumers Energy
- a) *Jimmy King - may attend later
 - b) *Nate Warren - may attend later
 - c) *Pipe line contractor - may attend later
 - d) *In - site form contractor - may attend later
6. Ace Asphalt - paving contractor
- a) *Mark Marshall - Ace Asphalt
7. Zito - utility contractor
- a) *Dan Zito - Project manager - Zito Construction
8. Planning and scheduling consultant
- a) *Ralph J. Stephenson, P.E.
- E. Those expected to attend - by organization
1. Ace Asphalt - paving contractor
- a) Mark Marshall - Ace Asphalt
2. City of Flint
- a) Jesse Binion - Ombudsman
 - b) Roger Clapp - City of Flint Water Department
 - c) Hans Kuhlmann, P.E. - Flint City Engineering DPW & U
 - d) Dan Larson - Sanitary Sewer Supervisor
 - e) Tom McCabe - Flint Purchasing
 - f) Pat Rohn, P.E. - Flint DPW & U
 - g) Jack Sargent, P.E. - Flint City Engineering DPW & U
 - h) Alex Thomas - Director of DCED
 - i) Brian VanPaten, R.F. - Flint Department of Parks & Recreation
 - j) Suzanne Wilcox - Project Administrator, DCED (fce's point of contact)
3. Civil Engineer - Flint Surveying and Engineering Co. (fse)
- a) Curt Carlson, P.E. - Principal, FSE
 - b) Rich Esser, P.E. - Project Engineer, FSE
4. Consumers Energy
- a) Jimmy King - Consumers Energy
 - b) Nate Warren

- c) Pipe line contractor
- d) In - site form contractor
- 5. Construction Testing Services
 - a) John Irwin - Construction Testing Services
- 6. Forrest Homes
 - a) Gary Grossman - Forrest Homes
- 7. Odyssey Housing Development
 - a) Audie Kincaid - Odyssey Housing Development
- 8. Planning and scheduling consultant
 - a) Ralph J. Stephenson, P.E.
- 9. Zito - utility contractor
 - a) Dan Zito - Project manager - Zito Construction
- F. Those expected to attend - by individual
 - 1. Jessi Binion - Ombudsman COF
 - 2. *Curt Carlson, P.E. - Principal, FSE
 - 3. Roger Clapp - City of Flint Water Department
 - 4. *Rich Esser, P.E. - Project Engineer, FSE
 - 5. Gary Grossman - Forrest Homes
 - 6. In - situ form contractor - for Consumers Energy
 - 7. Jimmy King - Consumers Energy
 - 8. Audie Kincaid - Odyssey Housing Development
 - 9. Hans Kuhlmann - Flint City, Engineering DPW
 - 10. Dan Larson - Flint Sanitary Sewer Supervisor
 - 11. Mark Marshal - Ace Asphalt
 - 12. Pipe line contractor - for Consumers Energy
 - 13. Alex Thomas - Director of DCED
 - 14. Ralph J. Stephenson, P.E. - Planning and scheduling consultant
 - 15. Joe Thompson
 - 16. Nate Warren - Consumers Energy
 - 17. Suzanne Wilcox - Project Administrator, DCED (fce's point of contact)
 - 18. Dan Zito - Zito Construction - utility contractor
- G. Key dates
 - 1. Notice to proceed issued ?
 - 2. Contract completion time = 90 calendar days
 - a) November 1, 2000 P.M. (wd)
- H. Notes from meeting of Wednesday August 23, 2000 (wd 166)
 - 1. Location of meeting
 - 2. Those attending - see separate sign-in sheet
 - 3. A.M. session
 - 4. P.M. session
- I. Questions
 - 1. Is the current work entitled Phase I or Phase A?
 - 2. Who pays for sidewalk replacement as damage is incurred during construction of new housing units?

III. Project Meeting #2 - COF conference room - City Hall - City of Flint, Michigan - Thursday April 12, 2001 (wd 328).

- A. Location of meeting - COF conference room - City Hall - City of Flint, Michigan - April 12, 2001 (wd 328).
- B. Those attending (list to be checked and corrected)
 - 1. George Atkin - Resident Project Representative - fse
 - 2. Roger Clapp - City of Flint Water Department
 - 3. Curt Carlson, P.E. - Principal
 - 4. Rich Esser, P.E. - Project Engineer for fse
 - 5. Jim Greer - Greco
 - 6. Audie Kincaid - Odyssey Housing Development
 - 7. Mark Marshall - Assistant General Manager - Ace Asphalt -
 - 8. Ralph J. Stephenson, P.E. - Planning and scheduling consultant
 - 9. Alex Thomas - Director of DCED.
 - 10. Glenn Thomas - City of Flint - Plumbing & Mechanical Inspector
 - 11. Joe Thompson, Jr. Forest Homes of Flint
 - 12. Suzzane Wilcox - Project Administrator, DCED (fse's point of contact)
 - 13. Dan Zito - Project manager
 - 14. Chad Zudel - City of Flint Building Inspector
- C. Agenda
 - 1. Basic agenda - prepared by Curt Carlson, P.E. - April 12, 2001 (wd 328)
 - a) Street and Home Schedule
 - b) Street Issues
 - c) Home Issues
 - 2. Additional agenda items - added as meeting proceeded
 - a) Define scope of work in Area 1 and Phase A.
 - b) Monitor current status of project.
 - c) Update issue #1 network model
 - d) Inspect project area
 - e) Develop expanded laundry list of front end items
- D. Scope of work by area and by actions. To be reviewed and corrected as necessary.
 - 1. Phase 1 - Work to be done that is in the right of way.
 - 2. Phase A - Work included in construction of 9 homes: 6 on the west side of Root Street and 3 between Wood and Williams on Root Street . One home has been 70% completed and will be used as a model home.
 - 3. Phase B - Work included in the construction of 27 homes: 13 on West side of Root Street and 14 on East side of Root Street, all between Wood and Williams. One home has been 70% completed and will be used as a model home.
- E. In the early after noon Mr. Carlson, Mr. Esser and Ralph J. Stephenson made a windshield inspection of the project to assist in preparing a current monitoring report and completing the updating.

F. Current status of project as of Thursday April 12, 2001. Monitored from Sheet 1, Issue 1 - dated August 23, 2000

1. This network was revised to issue #2 dated April 12, 2001 at our planning meeting.

2. Currently:

a) Activities complete as of April 12, 2001 (wd 328)

- (1) 002-CITY & CONTRACTOR EXECUTE IN-SITU LINING CONTRACT & MOVE ON SITE - 5 - **complete.**
- (2) 003-CITY COUNCIL REVIEW & DISCUSS CONTRACT - 1 - **complete.**
- (3) 004-DCED COMPLETE REVIEW & PREPARE & SUBMIT TO HUD, REQUEST TO RELEASE FUNDS FOR PROJECT - 2 - **complete.**
- (4) 006-REPLACE EXISTING LOW PRESSURE GAS MAIN & SERVICES - 5 - **complete.**
- (5) 007-T/R TO DEVELOPER START OF DWELLING UNIT CONSTRUCT - 4 - **complete.**
- (6) 012-INSTL IN-SITU LINING IN 8" SANITARY SEWER LINE AT AREA #1 - 2 - **complete.**
- (7) 013-CITY COUNCIL APPROVE PROCEEDING WITH PROJECT - 1 - **complete.**

b) Activities to be added to updated network - Issue #2 dated April 12, 2001 (wd 328). To be checked, confirmed by fse, contractors, City of Flint and developer

- (1) DCED PREPARE & SUBMIT TO CITY COUNCIL A PROCESS FOR REVISING PROJECT - 10
- (2) PHASE 1 CONTRACTOR PROVIDE GENERAL REQUIREMENTS INFORMATION - INSURANCE, BONDS AND OTHER TO DCED - 5
- (3) PREPARE & SUBMIT CITY OF FLINT STANDARD SUMP PUMP & ROOF DRAINAGE DESIGN FOR ENTIRE PROJECT - 5
- (4) CITY COUNCIL REVIEW & APPROVE PROCESS FOR REVISING PROJECT - 10
- (5) AMEND, APPLY FOR & RECEIVE WATER MAIN PERMIT FOR PHASE 1 TO 8" WATER MAIN FROM 6" WATER MAIN & OTHER REVISIONS & SUBMIT BULLETIN FOR PRICING & APPR - 44
- (6) DCED & CONTRACTORS COMPLETE PREPARE, EXECUTE & SUBMIT PHASE 1 CONTRACT FOR EXECUTION (BONDS, INSURANCE, AFF ACTION, ETC.) - 10
- (7) DCED PROCESS CONTRACT FOR EXECUTION BY CITY ADMINISTRATION - 3
- (8) DPW REVIEW & APPROVE CITY OF FLINT STANDARD SUMP PUMP & ROOF DRAINAGE DESIGN FOR ENTIRE PROJECT - 10
- (9) FSE PREPARE NEW TOPO FOR PHASE A - 5 *date to be determined*

- (10) FSE UPDATE & SUBMIT REVISED GRADING PLAN FOR PHASE A - 5
 - (11) FSE & DCED EXECUTE CONTRACTS FOR PHASE 1, PHASE 2 (FUTURE) & PHASE B - 5
 - (12) DEVELOPER CONST 8 REMAINING HOUSING UNITS IN PHASE A - 95
- G. Mr. Carlson, Mr. Esser and Ralph J. Stephenson prepared an updated laundry list of activities to be added to the updated network model.
- H. Update issue #1 network model.
- 1. Mr. Carlson, Mr. Esser and Ralph J. Stephenson inspected project in field and then came back to City Hall and completed updating the Issue #1 network model to Issue #2 dated April 12, 2001 (wd 328).
 - 2. A copy of this updated network was printed and sent to Curt Carlson for pasting up and distributing to those members of the project team needing this information. All involved will check the updated network model and prepare comments from which we will derive the final network model to use in future inspections and monitoring meeting.

Smith Village Steet Resurfacing - fse - Flint, Michigan

I. Project name - Smith Village Steet Resurfacing - Phase A

II. Project characteristics

A. Phases

1. Phase A - current contract
2. Phase B
3. Phase C

III. Laundry list of actions to take (at random)

- A. REPLACE EXISTING LOW PRESSURE GAS MAIN
- B. PLACE 1,100 TON OF COLD MILLING (CORRECT TERMINOLOGY?)
- C. PLACE 550 TONS OF NEW BITUMINOUS 1100L 20AA PAVEMENT
- D. PLACE 550 TONS OF NEW BITUMINOUS 1100T 20AA
- E. REMOVE & REPLACE 4,060 LINEAR FEET(?) OF CURB & GUTTER
(REPLACE WITH MOUNTABLE CURB (??))
- F. REMOVE 1,945 SQUARE YARDS OF SIDEWALKS
- G. CONSTRUCT 6,112 CUBIC FEET OF 4" SIDEWALKS
- H. REMOVE 356 SQUARE YARDS OF DRIVEWAYS
- I. CONSTRUCT 190 SQUARE YARDS OF DRIVEWAYS
- J. CONSTRUCT CONCRETE 1,322 SQUARE FEET OF RAMPS
- K. INSTALL NEW SANITARY SEWER LEADS
- L. INSTALL NEW 6" WATER MAIN TO REPLACE ABANDONED 3" LINE
- M. INSTALL NEW WATER MAIN SERVICE LEADS
- N. WATER AND SANITARY LEADS WILL EXTEND 5' ONTO THE PROPERTY
- O. CUT & REMOVE & DISPOSE OF BITUMINOUS PAVEMENT
- P. EXCAVATE & INSTALL UTILITIES, TOP 3" WILL BE 21AAA LIMESTONE.
- Q. AFTER ALL LEADS ARE INSTALLED CONTRACTOR WILL COLD MILL
3". IN SOME PLACES THIS WILL BE 3" OF 21AA
- R. GRANULAR MATERIAL UNDERLYING THE 3" LIMESTONE WILL BE
REMOVED TO A DEPTH EQUAL TO THE SURROUNDING CONCRETE
(IF PRESENT), COMPACTED AND CONCRETE POURED
- S. A GEOGRID AND FABRIC WILL THEN BE PLACED UPON THE EXPOSED
SURFACE (IN SOME PLACES THIS WILL BE CONCRETE OR ASHPHALT
DUE TO VARYING ASPHALT THICKNESS).
- T. 2 - 1 1/2 LAYERS OF ASHPHALT WILL BE PLACED .

**IV. Those involved - *indicates those expected to attend meeting on August 23, 2000
(wd ?)**

- A. Civil Engineer - Flint Surveying and Engineering Co. (fce)
 1. *Curt Carlson, P.E. - Principal
 2. *Rich Esser, P.E. - Project Engineer
- B. City of Flint
 1. Alex Thomas - Director of DCED

2. *Suzanne Wilcox - Project Administrator, DCED (fce's point of contact)
 3. Jack Sargent, P.E. - City Engineer, DPW
 4. *Hans Kuhlmann - Flint City, Engineering DPW
 5. Derrick Jones - Purchasing Department
 6. Charles Winfree - Contract Office
 7. *Jesse Binion - Ombudsman
 8. *Roger Clapp - City of Flint Water Department
 9. *Dan Larson - Sanitary Sewer Supervisor
 10. Peter Bade - City Attorney
- C. DCED
1. *Ned Zimmerman - consultant to DCED
- D. Forrest Homes
1. *Gary Grossman
- E. Consumers Energy
1. *Jimmy King - may attend later
 2. *Nate Warren - may attend later
 3. *Pipe line contractor - may attend later
 4. *In - site form contractor - may attend later
- F. Ace Asphalt - paving contractor
1. *Mark
- G. Zito - utility contractor
1. *Project manager
- H. Planning and scheduling consultant
1. Ralph J. Stephenson, P.E.
- V. **Those expected to attend - by organization**
- A. Ace Asphalt - paving contractor
1. Mark Marshall - Ace Asphalt
- B. City of Flint
1. Jesse Binion - Ombudsman
 2. Roger Clapp - City of Flint Water Department
 3. Hans Kuhlmann, P.E. - Flint City Engineering DPW & U
 4. Dan Larson - Sanitary Sewer Supervisor
 5. Tom McCabe - Flint Purchasing
 6. Pat Rohn, P.E. - Flint DPW & U
 7. Jack Sargent, P.E. - Flint City Engineering DPW & U
 8. Alex Thomas - Director of DCED
 9. Brian VanPaten, R.F. - Flint Department of Parks & Recreation
 10. Suzanne Wilcox - Project Administrator, DCED (fce's point of contact)
- C. Civil Engineer - Flint Surveying and Engineering Co. (fse)
1. Curt Carlson, P.E. - Principal, FSE
 2. Rich Esser, P.E. - Project Engineer, FSE

- D. Consumers Energy
 - 1. Jimmy King - Consumers Energy
 - 2. Nate Warren
 - 3. Pipe line contractor
 - 4. In - site form contractor
- E. Construction Testing Services
 - 1. John Irwin - Construction Testing Services
- F. Forrest Homes
 - 1. Gary Grossman - Forrest Homes
- G. Odyssey Housing Development
 - 1. Audie Kincaid - Odyssey Housing Development
- H. Planning and scheduling consultant
 - 1. Ralph J. Stephenson, P.E.
- I. Zito - utility contractor
 - 1. Dan Zito - Project manager - Zito Construction
- VI. **Those expected to attend - by individual**
 - A. Jesse Binion - Ombudsman
 - B. Curt Carlson, P.E. - Principal, FSE
 - C. Roger Clapp - City of Flint Water Department
 - D. Rich Esser, P.E. - Project Engineer, FSE
 - E. Gary Grossman - Forrest Homes
 - F. In - site form contractor - for Consumers Energy
 - G. Jimmy King - Consumers Energy
 - H. Audie Kincaid - Odyssey Housing Development
 - I. Hans Kuhlmann - Flint City, Engineering DPW
 - J. Dan Larson - Flint Sanitary Sewer Supervisor
 - K. Mark Marshal - Ace Asphalt
 - L. Pipe line contractor - for Consumers Energy
 - M. Alex Thomas - Director of DCED
 - N. Ralph J. Stephenson, P.E. - Planning and scheduling consultant
 - O. Joe Thompson
 - P. Nate Warren - Consumers Energy
 - Q. Suzanne Wilcox - Project Administrator, DCED (fce's point of contact)
 - R. Dan Zito - Zito Construction - utility contractor
- VII. **Key dates**
 - A. Notice to proceed issued ?
 - B. Contract completion time = 90 calendar days
 - 1. November 1, 2000 P.M. (wd
- VIII. **Notes from meeting of Wednesday August 23, 2000**
 - A. Location of meeting

Smith Village Street Resurfacing
Flint Surveying & Engineering Company
Flint, Michigan

Ralph J. Stephenson, P.E.
Consulting Engineer

- B. Those attending
 - 1. A.M. meeting
 - 2. P.M. meeting
 - C. A.M. session
 - D. P.M. session
- IX. **Questions**
- A. Is the current work entitled Phase I or Phase A?

Ralph J. Stephenson, P.E. P.E.
Consulting Engineer
323 Hiawatha Drive
Mt. Pleasant, Michigan 48828-9096
phone 1-989-772-2537
e-mail - ralphjs@gte.net
April 17, 2001

Rich Esser, P.E., Project Engineer
FSE Surveying and Engineering
5370 Miller Road, Suite 13
Swartz Creek, Michigan 48473

Re: Issue #3 action plan for Smith Village Street Resurfacing Project - dated April 16, 2001

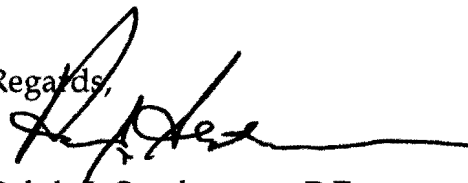
Dear Rich:

Enclosed is a set of two documents labeled Issue #3, dated April 16, 2001, and containing the revised network model, Sheet 1 of the Smith Village street project along with a bar chart translation of the information in the network diagram. Notice I did not send you a revised copy of page 7 of the note file since I recommend you make this relatively minor change directly on the page of the memo. I shall change the disk copy of the letter and the next time we print the entire file it will include the changes to the monitored status.

Thank you for calling attention to the revisions and allowing our disk set to be kept up-to-date.

Please let me know when you receive these documents, and please check them carefully to insure they are correct and contain the information you wanted changed. Thank you for your help, and keep in touch!

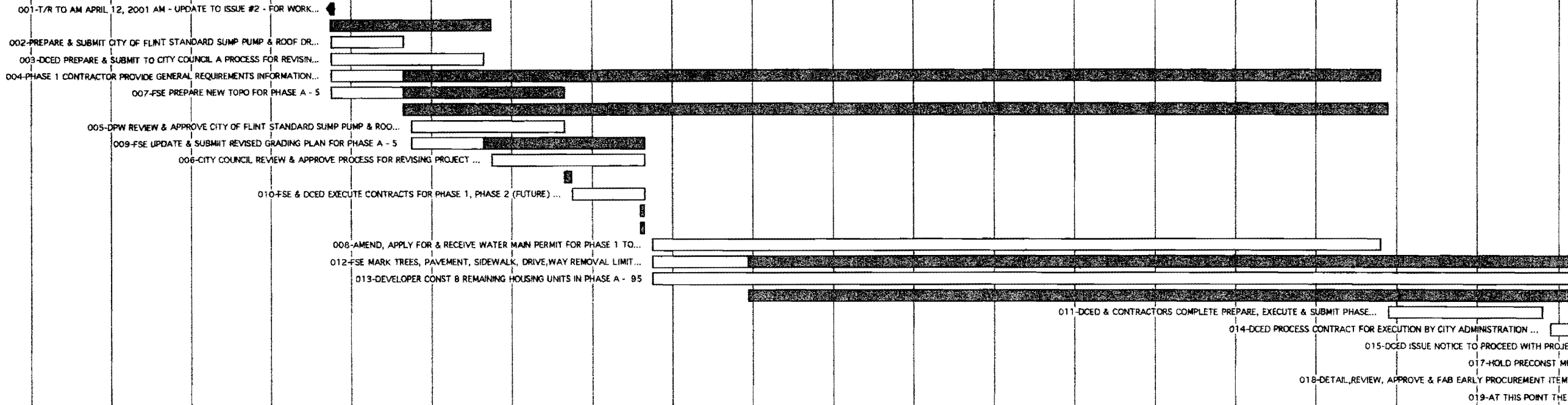
Regards,



Ralph J. Stephenson, P.E.

Enclosed: Revised network model
and bar chart Sht 1, Issue #3

date printed: 4/17/1



Issue #1 - August 23, 2000
 Issue #1 - August 23, 2000 mtr 4//12/01
 Issue #2 - April 12, 2001
 i2 sht 1 phase 1

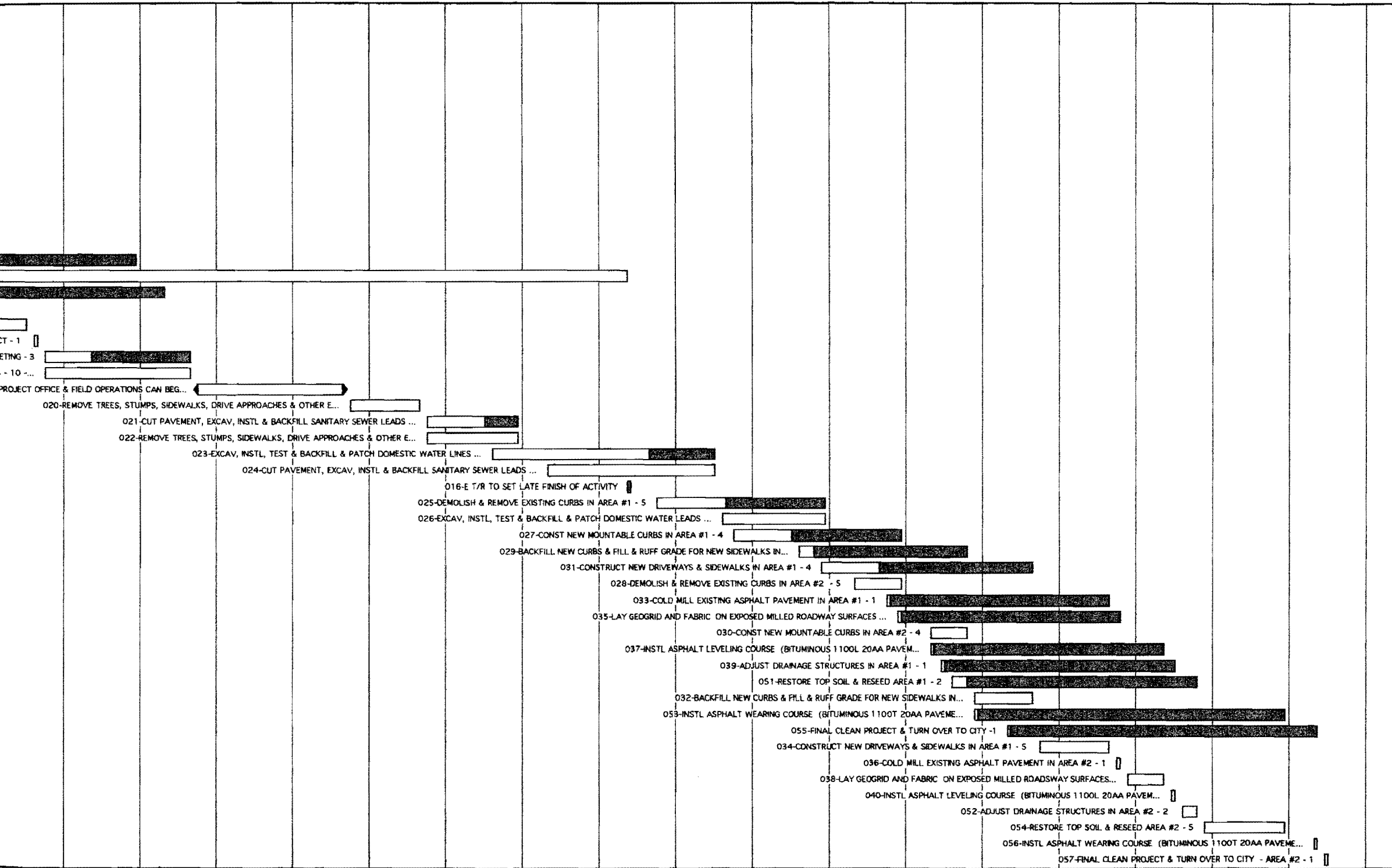
Reserved activity numbers

041	046	091	096
042	047	092	097
043	048	093	098
044	049	094	099
045	050	095	100

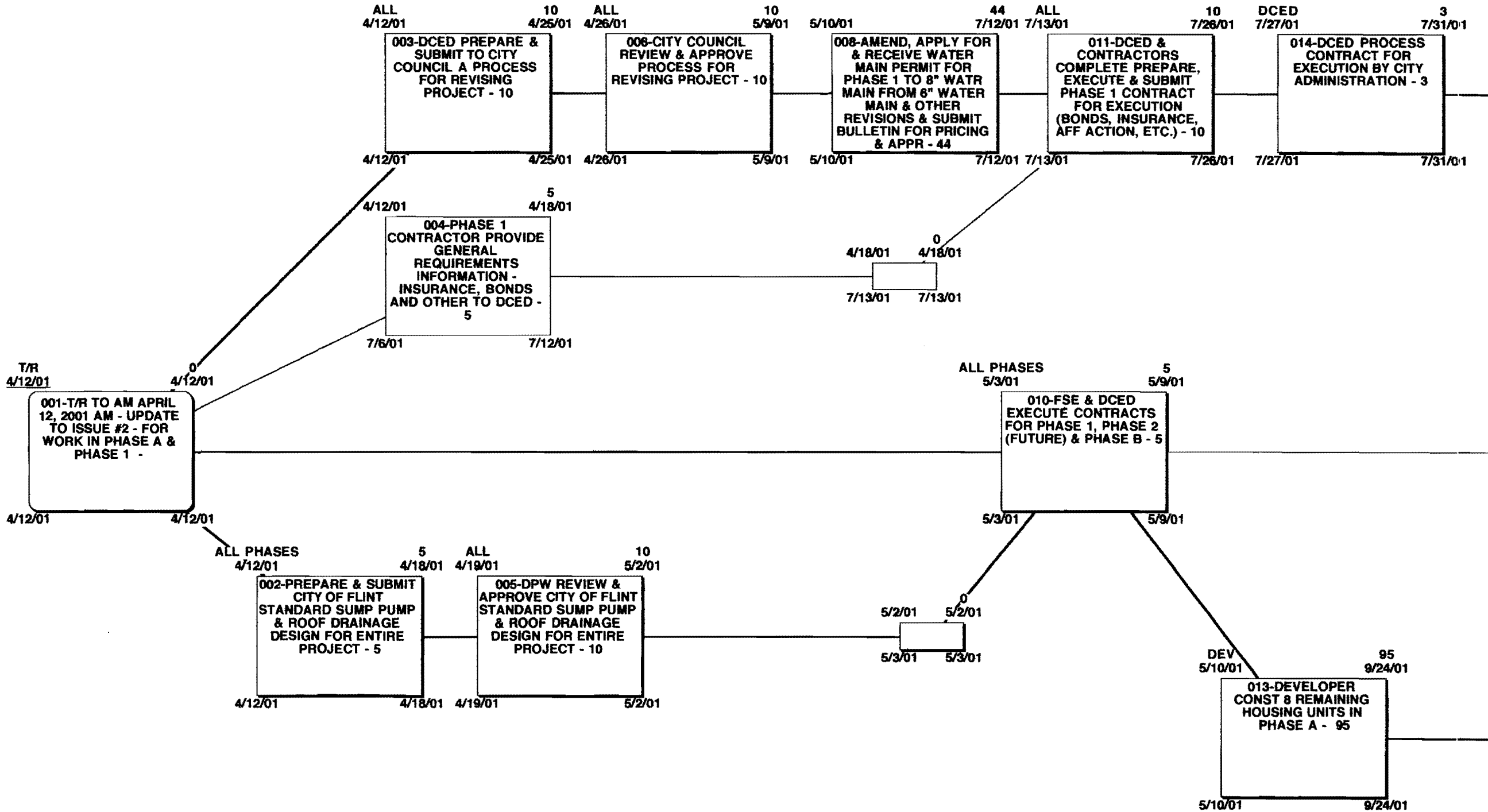
**NETWORK MODEL FOR STREET
 RESURFACING PROGRAM - PHASE I
 Flint, Michigan**

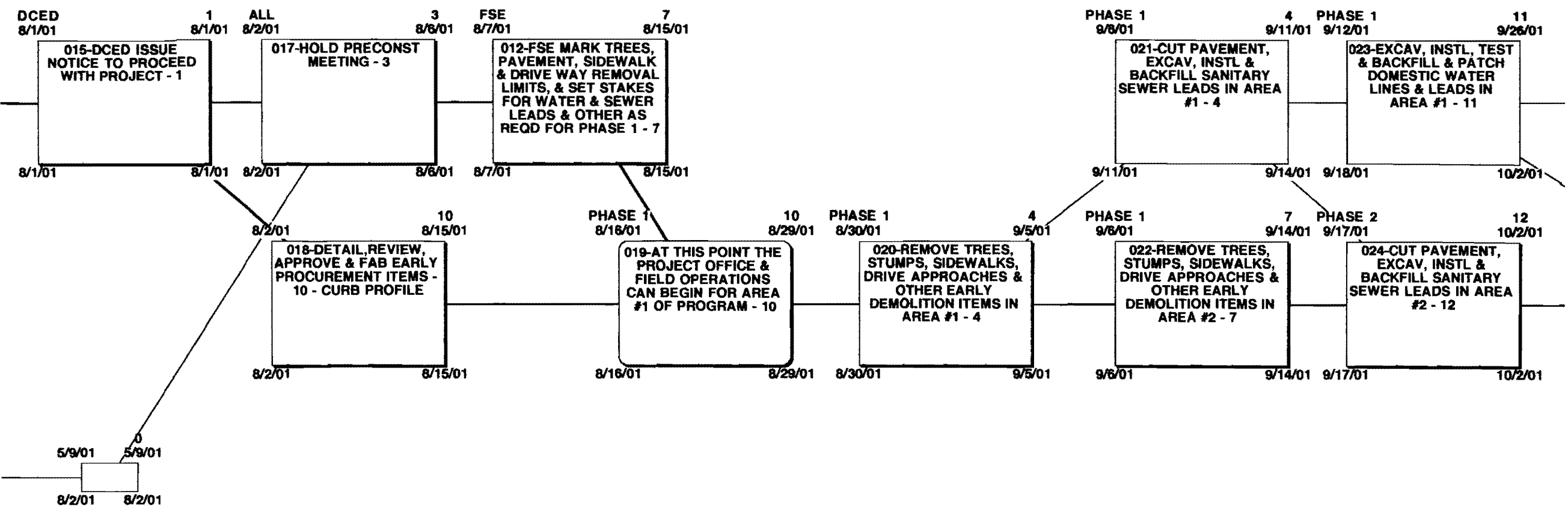
**Flint Surveying and Engineering -
 Flint, Michigan - Consulting Engineers**

Ralph J. Stephenson, P.E. - Consultant
 323 Hiawatha Drive
 Mt. Pleasant, Michigan 48858-9096
 ph 517-773-2282



CT - 1
 ETING - 3
 - 10 ...
 PROJECT OFFICE & FIELD OPERATIONS CAN BEG...

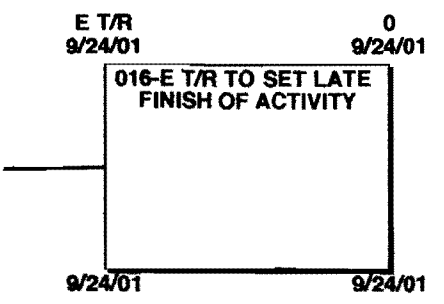


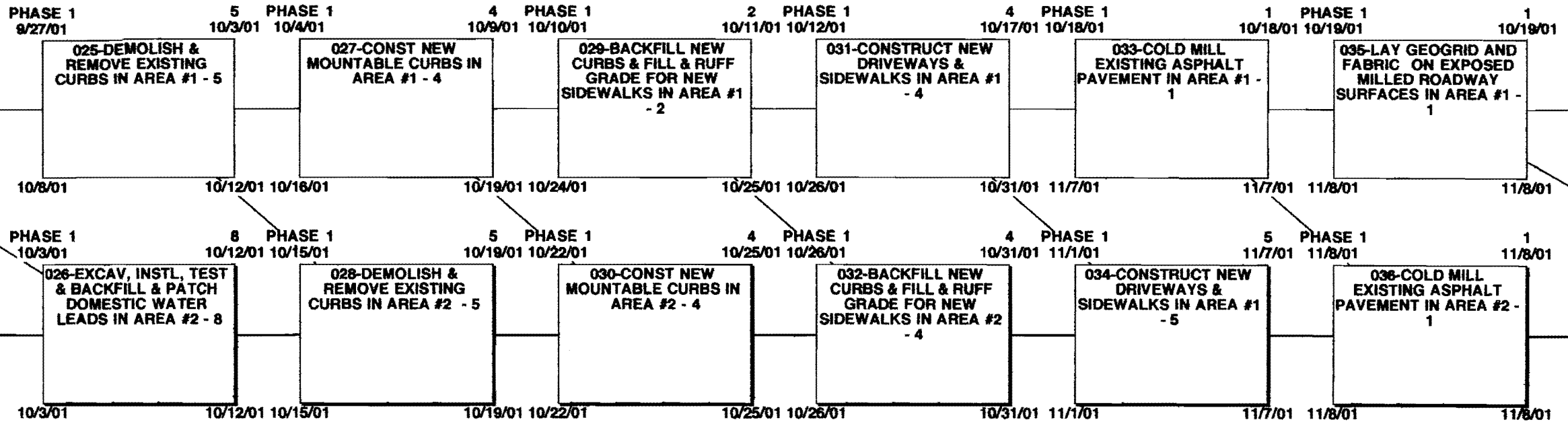


• PHASE 1 - WORK TO BE DONE THAT IS IN THE RIGHT OF WAY

• AREA 1 - WORK INCLUDED IN THE CONSTRUCTION OF 9 HOMES: 6 ON THE WEST SIDE OF ROOT STREET, 3 BETWEEN WOOD AND WILLIAMS ON ROOT STREET. ONE HOME HAS BEEN 70% COMPLETED AND WILL BE USED AS A MODEL HOME.

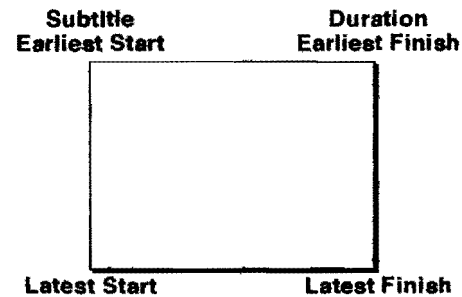
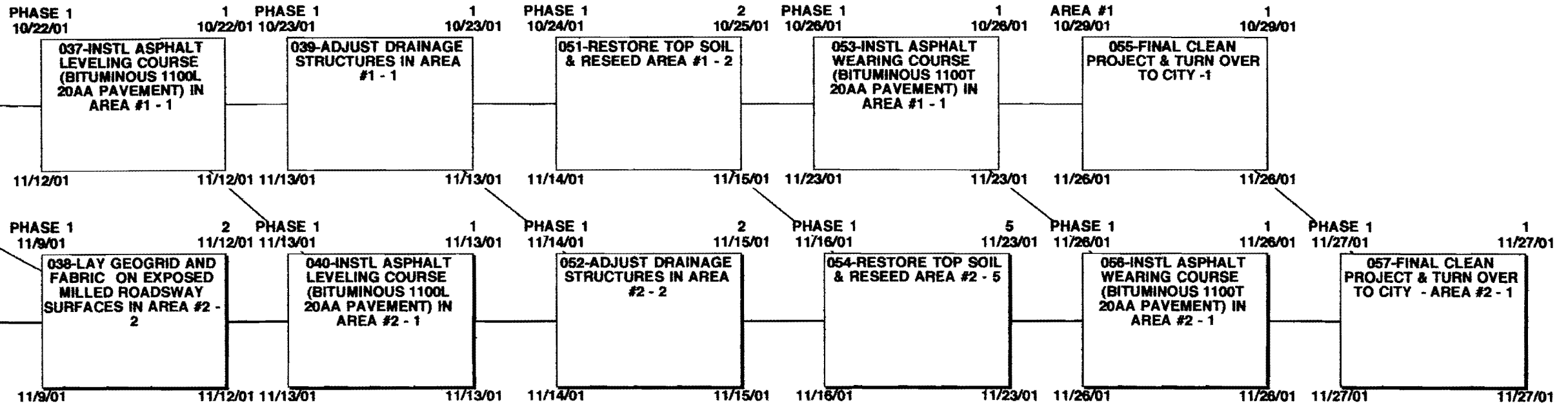
• AREA 2 - WORK INCLUDED IN THE CONSTRUCTION OF 27 HOMES: 13 ON WEST SIDE OF ROOT STREET AND 14 ON EAST SIDE OF ROOT STREET ALL BETWEEN WOOD AND WILLIAMS.





Laundry list of actions to take (at random)

- ✓✓ PLACE IN-SITU LINING IN EXISTING SANITARY SEWER PIPE
- A. ✓✓ REPLACE EXISTING LOW PRESSURE GAS MAIN - Consumers
- B. ✓✓ REMOVE 1,100 TON BY COLD MILLING (CORRECT TERMINOLOGY?)
- C. ✓✓ PLACE 550 TONS OF NEW BITUMINOUS 1100L 20AA PAVEMENT
- D. ✓✓ PLACE 550 TONS OF NEW BITUMINOUS 1100T 20AA
- E. ✓✓ REMOVE & REPLACE 4,060 LINEAR FEET OF CURB & GUTTER (REPLACE WITH MOUNTABLE CURB)
- F. ✓✓ REMOVE 1,945 SQUARE YARDS OF EXISTING SIDEWALKS
- G. ✓✓ CONSTRUCT 2,058 SQUARE YARDS OF 4" SIDEWALKS INCLUDING 4" SAND SUBASE
- H. ✓✓ REMOVE 356 SQUARE YARDS OF DRIVEWAYS
- I. ✓✓ CONSTRUCT 190 SQUARE YARDS OF 4" & 6" DRIVEWAYS
- J. ✓✓ CONSTRUCT CONCRETE 1,322 SQUARE FEET OF SIDEWALK RAMPS (CHECK SIDEWALK RAMP THICKNESS)
- K. ✓✓ INSTALL NEW SANITARY SEWER LEADS
- L. ✓✓ INSTALL NEW 6" WATER MAIN TO REPLACE ABANDONED 3" LINE (ROOT ST BETWEEN WOOD & MARY)
- M. ✓✓ INSTALL NEW WATER MAIN SERVICE LEADS
- N. ✓✓ WATER AND SANITARY LEADS WILL EXTEND 5' ONTO THE PROPERTY
- O. ✓✓ CUT & REMOVE & DISPOSE OF BITUMINOUS PAVEMENT (FOR UTILITY CUTS)
- P. ✓✓ EXCAVATE & INSTALL UTILITIES, TOP 3" WILL BE 21AAA LIMESTONE.
- Q. ✓✓ AFTER ALL LEADS ARE INSTALLED CONTRACTOR WILL COLD MILL 3". IN SOME PLACES THIS WILL BE 3" OF 21AA (see B above)
- R. ✓✓ GRANULAR MATERIAL UNDERLYING THE 3" LIMESTONE WILL BE REMOVED TO A DEPTH EQUAL TO THE SURROUNDING CONCRETE (IF PRESENT), COMPACTED AND CONCRETE POURED
- S. ✓✓ A GEOGRID AND FABRIC WILL THEN BE PLACED UPON THE EXPOSED SURFACE (IN SOME PLACES THIS WILL BE CONCRETE OR ASPHALT DUE TO VARYING ASPHALT THICKNESS).
- T. ✓✓ 2 - 1 1/2 LAYERS OF ASPHALT WILL BE PLACED . (see earlier item)
- U. ✓✓ ADJUST VERTICAL ELEVATIONS AT DRAINAGE STRUCTURES.
- V. ✓✓ REMOVE TREES AS REQUIRED.



ACTIVITY LEGEND

Issue #1 - August 23, 2000
 Issue #1 - August 23, 2000 mtr 4/12/01
 Issue #2 - April 12, 2001
 Issue #3 - April 16, 2001
 i3 sht 1 phase 1

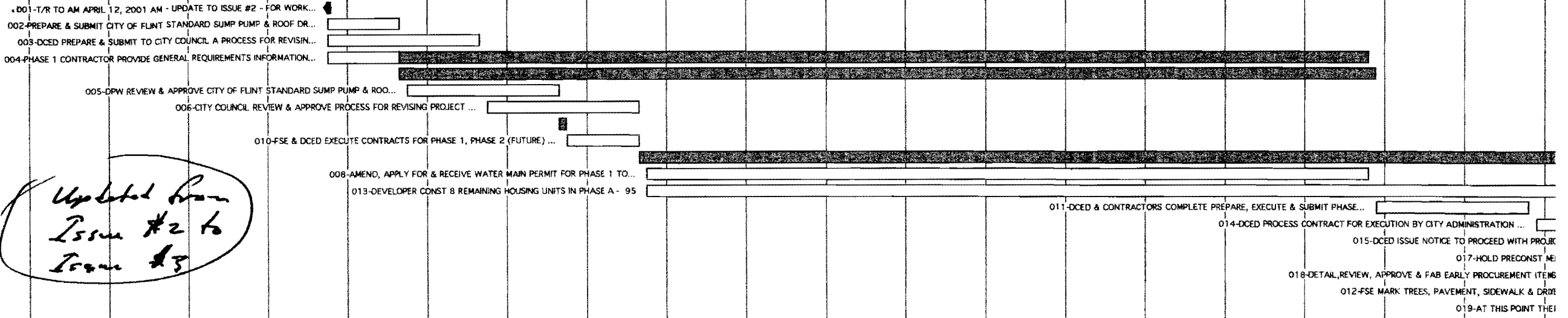
Reserved activity numbers

041	046	091	096
042	047	092	097
043	048	093	098
044	049	094	099
045	050	095	100

**NETWORK MODEL FOR STREET RESURFACING PROGRAM - PHASE I
 Flint, Michigan**

**Flint Surveying and Engineering -
 Flint, Michigan - Consulting Engineers**

Ralph J. Stephenson, P.E. - Consultant
 323 Hiawatha Drive
 Mt. Pleasant, Michigan 48858-9096
 ph 517-773-2282



Updated from Issue #2 to Issue #3

Issue #1 - August 23, 2000
 Issue #1 - August 23, 2000 mtr 4/12/01
 Issue #2 - April 12, 2001
 Issue #3 - April 16, 2001
 12 sht 1 phase 1

Reserved activity numbers

041	046	091	096
042	047	092	097
043	048	093	098
044	049	094	099
045	050	095	100

**NETWORK MODEL FOR STREET RESURFACING PROGRAM - PHASE I
 Flint, Michigan**

**Flint Surveying and Engineering -
 Flint, Michigan - Consulting Engineers**

Ralph J. Stephenson, P.E. - Consultant
 323 Hiawatha Drive
 Mt. Pleasant, Michigan 48858-9096
 ph 517-773-2282

