

**TM U.S. 23 design, build, & warrant - reconstruction of 6.1 miles**

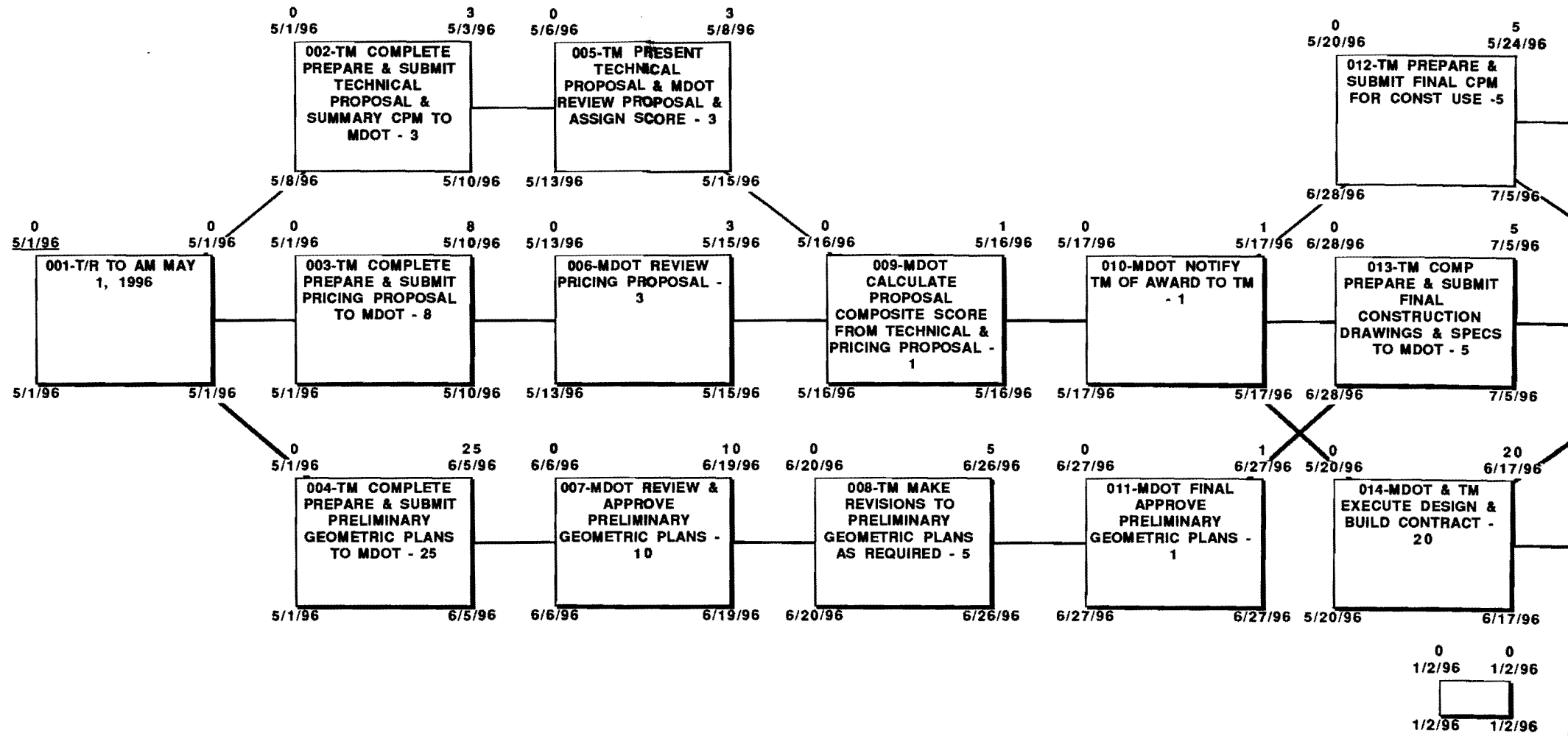
**I. Location - Washtenaw County - from north of Milan to north of Bemis Road**

**II. Key dates**

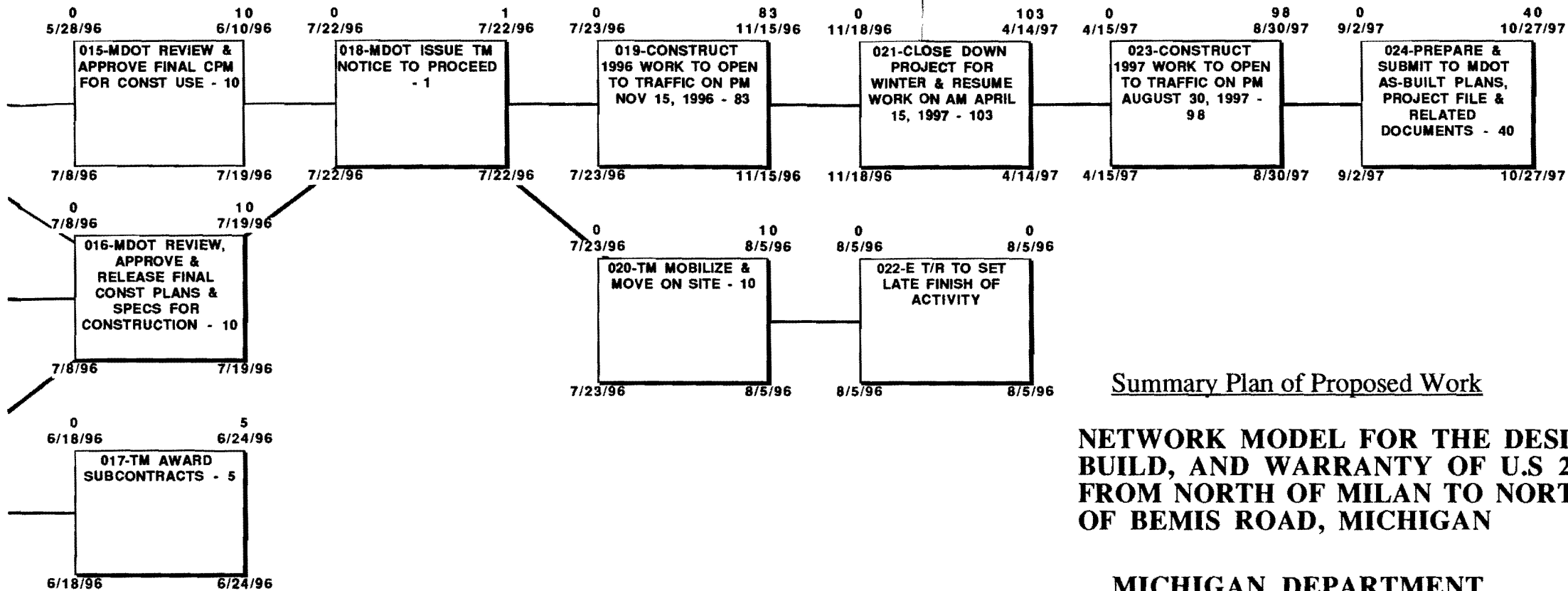
- ✓ A. May 3, 1996 - Submit technical proposal
- ✓ B. May 10, 1996 - Submit pricing proposal
- ✓ C. June 4, 1996 - Submit geometric plans for review
  - ~~1. MDOT has 10 working days to review and approve the geometric plans~~
- ✓ D. June 13, 1996 - MDOT complete preliminary <sup>geometric</sup> plan review and approval
- ✓ E. June 14, 1996 - Submit final construction drawings to MDOT
- ✓ F. June 14, 1996 - TM and MDOT execute design and build contract
- ✓ G. June 14, 1996 - MDOT complete review and approve geometric plan
- ✓ H. June 14, 1996 - TM execute subcontracts
- ✓ I. June 27, 1996 - MDOT complete review of final plans
- ~~J. July 5, 1996 - TM complete make necessary revisions to final plans~~
- K. July 19, 1996 - MDOT complete review and approve final construction drawings.

**III. Those involved**

- A. Thompson McCully - general design/build contractor
  - 1. Dick Brillhart
  - 2. Dennis Rickard
  - 3. David Thompson
  - 4. Dane Dominici
  - 5. Cal Knop
  - 6. Rollin Jones
- B. Wade Trim - engineers of record - employed by TM
  - 1. George Ferraro
  - 2. Greg Trim
  - 3. Mark Sohlden
- C. MDOT
  - 1. ????



Float time shown in this network model is for the sole use of Thompson McCully and is not to be used by others unless specifically approved in writing by Thompson McCully



Summary Plan of Proposed Work

**NETWORK MODEL FOR THE DESIGN, BUILD, AND WARRANTY OF U.S 23 FROM NORTH OF MILAN TO NORTH OF BEMIS ROAD, MICHIGAN**

**MICHIGAN DEPARTMENT OF TRANSPORTATION**

**Thompson McCully-  
General Design & Build Contractor  
Belleville, Michigan**

Ralph J. Stephenson, P.E.,P.C.  
Consulting Engineer  
323 Hiawatha Drive  
Mt. Pleasant, Michigan 48858

**SHEET #1**

Reserved Activity Numbers

041	046	091	096
042	047	092	097
043	048	093	098
044	049	094	099
045	050	095	

Issue #1 - April 30, 1996

us23tm sht 1 prop

lan 001  
han ??