

**FLOW CHART FOR EARLY WORK ON  
MICHIGAN CAPITOL RESTORATION  
PROGRAM - MISSIONS A, R & C  
Department of Management & Budget  
Lansing, Michigan**

Issue #1 - September 5, 1988  
Issue #2 - September 27, 1988  
12caprestprojtree - disk 135

Ralph J. Stephenson PE/PC  
Consulting Engineer  
15054 Warwick Road  
Detroit, Michigan 48223  
ph 313 273 5026

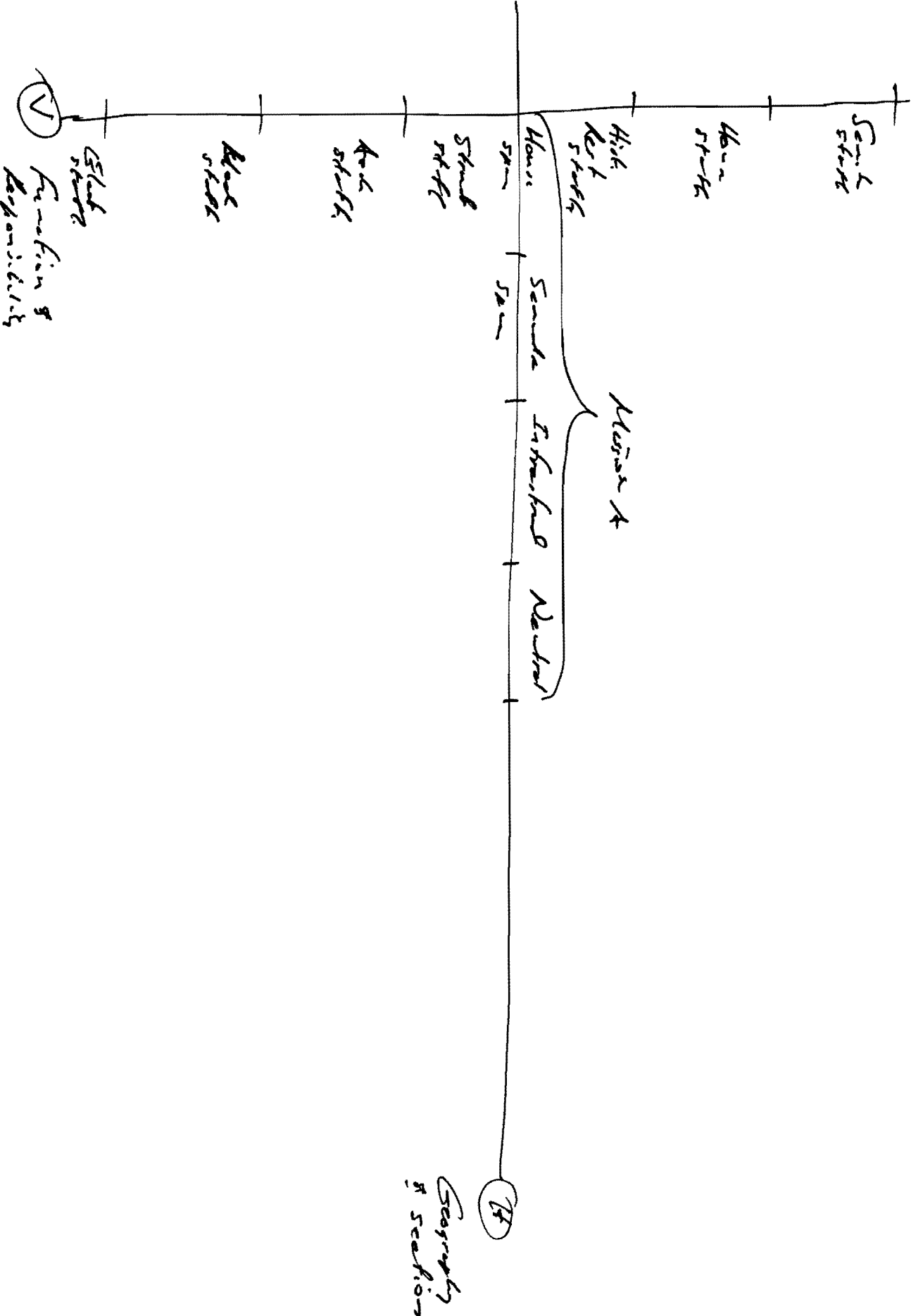
activity or name	oen
abb - Abbreviation	3
act - Activity	2
cbu - Capitol building	6
cco - Capitol complex	8
cgo - Capitol grounds	7
cst - construction	72
cst - Construction phase	28
ctr - Construction contract phase	18
dde - Design development phase	11
des - Design phase	56
fpl - Final planning & preparation of contract	12
hou - House	70
loc - location - usually by geography	13
nsp - Neutral space	5
osp - Occupant space	4
ppl - Proposals	15
pro - Program writing phase	9

listed in abbreviation alphabetical order

activity or name	oen
sch - Schematic design phase	10
sen - Senate	71
x - means not applicable	33

listed in abbreviation alphabetical order

12/12/19



work phase	seq	area	activity or name	oen	type	sen osp	hou osp	public	serv	misc	struct	ext skin	site
des	1	cbu	Prepare project program	1	act	sen	hou	mcc	mcc	mcc	mcc	mcc	mcc
des	2	cbu	Review & approve project program	57	act	mcc	mcc	mcc	mcc	mcc	mcc	mcc	mcc
des	3	cbu	Select and contract for professional design services	60	act	sen	hou	mcc	mcc	mcc	mcc	mcc	mcc
des	4	cbu	Prepare design and construction documents	63	act	sen	hou	mcc	mcc	mcc	mcc	mcc	mcc
des	5	cbu	Review and approve design and construction documents	66	act	mcc/sen	mcc/hou	mcc	mcc	mcc	mcc	mcc	mcc
des	6	cbu	Issue contract documents for construction proposals	14	act	sen	hou	mcc	mcc	mcc	mcc	mcc	mcc
des	7	cbu	Hold prebid document review meeting for construction	25	act	sen	hou	mcc	mcc	mcc	mcc	mcc	mcc
cst	1	cbu	Prepare & receive construction proposals	16	act	sen	hou	mcc	mcc	mcc	mcc	mcc	mcc
cst	2	cbu	Open and review construction proposals	17	act	sen	hou	mcc	mcc	mcc	mcc	mcc	mcc
cst	3	cbu	Submit recommendation for award of construction	19	act	sen	hou	mcc	mcc	mcc	mcc	mcc	mcc
cst	4	cbu	Accept recommendation for award of construction	20	act	mcc	mcc	mcc	mcc	mcc	mcc	mcc	mcc
cst	5	cbu	Issue construction award letter	21	act	sen	hou	mcc	mcc	mcc	mcc	mcc	mcc

listed in phase, sequence, area order

work phase	seq	area	activity or name	oen	type	sen osp	hou osp	public	serv	misc	struct	ext skin	site
cst	6	cbu	Submit and receive contract bond & insurance	22	act	sen	hou	mcc	mcc	mcc	mcc	mcc	mcc
cst	7	cbu	Execute construction contract	23	act	sen	hou	mcc	mcc	mcc	mcc	mcc	mcc
cst	8	cbu	Hold pre construction meeting with selected	26	act	sen	hou	mcc	mcc	mcc	mcc	mcc	mcc
cst	9	cbu	Issued contract and contract order (notice to proceed)	24	act	sen	hou	mcc	mcc	mcc	mcc	mcc	mcc
cst	10	cbu	Administer construction work	27	act	sen	hou	mcc	mcc	mcc	mcc	mcc	mcc

listed in phase, sequence, area order

work phase	seq	area	activity or name	oen	type	sen osp	hou osp	public	serv	misc	struct	ext skin	site
des	1	cbu	Prepare project program	1	act	sen	hou	mcc	mcc	mcc	mcc	mcc	mcc
des	2	cbu	Review & approve project program	57	act	mcc	mcc	mcc	mcc	mcc	mcc	mcc	mcc
des	3	cbu	Select and contract for professional design services	60	act	sen	hou	mcc	mcc	mcc	mcc	mcc	mcc
des	4	cbu	Prepare design and construction documents	63	act	sen	hou	mcc	mcc	mcc	mcc	mcc	mcc
des	5	cbu	Review and approve design and construction documents	66	act	mcc/sen	mcc/hou	mcc	mcc	mcc	mcc	mcc	mcc
des	6	cbu	Issue contract documents for construction proposals	14	act	sen	hou	mcc	mcc	mcc	mcc	mcc	mcc
des	7	cbu	Hold prebid document review meeting for construction	25	act	mcc	mcc	mcc	mcc	mcc	mcc	mcc	mcc
cst	1	cbu	Prepare & receive construction proposals	16	act	mcc	mcc	mcc	mcc	mcc	mcc	mcc	mcc
cst	2	cbu	Open and review construction proposals	17	act	mcc	mcc	mcc	mcc	mcc	mcc	mcc	mcc
cst	3	cbu	Submit recommendation for award of construction	19	act	sen	hou	mcc	mcc	mcc	mcc	mcc	mcc
cst	4	cbu	Accept recommendation for award of construction	20	act	mcc	mcc	mcc	mcc	mcc	mcc	mcc	mcc
cst	5	cbu	Issue construction award letter	21	act	mcc	mcc	mcc	mcc	mcc	mcc	mcc	mcc

listed in phase, sequence, area order

work phase	seq	area	activity or name	oen	type	sen osp	hou osp	public	serv	misc	struct	ext skin	site
cst	6	cbu	Submit and receive contract bond & insurance	22	act	mcc	mcc	mcc	mcc	mcc	mcc	mcc	mcc
cst	7	cbu	Execute construction contract	23	act	mcc	mcc	mcc	mcc	mcc	mcc	mcc	mcc
cst	8	cbu	Hold pre construction meeting with selected	26	act	mcc	mcc	mcc	mcc	mcc	mcc	mcc	mcc
cst	9	cbu	Issue contract and contract order (notice to proceed)	24	act	mcc	mcc	mcc	mcc	mcc	mcc	mcc	mcc
cst	10	cbu	Administer construction work	27	act	mcc	mcc	mcc	mcc	mcc	mcc	mcc	mcc



work phase	seq	area	activity or name	oen	type	sen osp	hou osp	public	serv	misc	struct	ext skin	site
des	1	cbu	Prepare project program	1	act	sen	hou	mcc	mcc	mcc	mcc	mcc	mcc
des	1	cco	Prepare project program	32	act	sen	hou	dmb	dmb	dmb	dmb	dmb	dmb
des	1	cgo	Prepare project program	31	act	mcc	mcc	mcc	mcc	mcc	mcc	mcc	mcc
des	2	cbu	Review & approve project program	57	act	mcc	mcc	mcc	mcc	mcc	mcc	mcc	mcc
des	2	cco	Review & approve project program	59	act	sen	hou	dmb	dmb	dmb	dmb	dmb	dmb
des	2	cgo	Review & approve project program	58	act	mcc/ sen	mcc/ hou	mcc	mcc	mcc	mcc	mcc	mcc
des	3	cbu	Select and contract for professional design services	60	act	sen	hou	mcc	mcc	mcc	mcc	mcc	mcc
des	3	cco	Select and contract for professional design services	62	act	sen	hou	dmb	dmb	dmb	dmb	dmb	dmb
des	3	cgo	Select and contract for professional design services	61	act	mcc	mcc	mcc	mcc	mcc	mcc	mcc	mcc
des	4	cbu	Prepare design and construction documents	63	act	sen	hou	mcc	mcc	mcc	mcc	mcc	mcc
des	4	cco	Prepare design and construction documents	65	act	sen	hou	dmb	dmb	dmb	dmb	dmb	dmb
des	4	cgo	Prepare design and construction documents	64	act	mcc	mcc	mcc	mcc	mcc	mcc	mcc	mcc

listed in phase, sequence, area order

work phase	seq	area	activity or name	oen	type	sen osp	hou osp	public	serv	misc	struct	ext skin	site
des	5	cbu	Review and approve design and construction documents	66	act	mcc/sen	mcc/hou	mcc	mcc	mcc	mcc	mcc	mcc
des	5	cco	Review and approve design and construction documents	68	act	sen	hou	dmb	dmb	dmb	dmb	dmb	dmb
des	5	cgo	Review and approve design and construction documents	67	act	mcc/sen	mcc/hou	mcc	mcc	mcc	mcc	mcc	mcc
des	6	cbu	Issue contract documents for construction proposals	14	act	sen	hou	mcc	mcc	mcc	mcc	mcc	mcc
des	6	cco	Issue contract documents for construction proposals	35	act	sen	hou	mcc	mcc	mcc	mcc	mcc	mcc
des	6	cgo	Issue contract documents for construction proposals	34	act	mcc	mcc	mcc	mcc	mcc	mcc	mcc	mcc
des	7	cbu	Hold prebid document review meeting for construction	25	act	mcc	mcc	mcc	mcc	mcc	mcc	mcc	mcc
des	7	cco	Hold prebid document review meeting for construction	51	act	sen	hou	dmb	dmb	dmb	dmb	dmb	dmb
des	7	cgo	Hold prebid document review meeting for construction	50	act	mcc	mcc	mcc	mcc	mcc	mcc	mcc	mcc
cst	1	cbu	Prepare & receive construction proposals	16	act	mcc	mcc	mcc	mcc	mcc	mcc	mcc	mcc
cst	1	cco	Prepare & receive construction proposals	37	act	sen	hou	dmb	dmb	dmb	dmb	dmb	dmb
cst	1	cgo	Prepare & receive construction proposals	36	act	mcc	mcc	mcc	mcc	mcc	mcc	mcc	mcc

listed in phase, sequence, area order

work phase	seq	area	activity or name	oen	type	sen osp	hou osp	public	serv	misc	struct	ext skin	site
cst	2	cbu	Open and review construction proposals	17	act	mcc	mcc	mcc	mcc	mcc	mcc	mcc	mcc
cst	2	cco	Open and review construction proposals	39	act	sen	hou	dmb	dmb	dmb	dmb	dmb	dmb
cst	2	cgo	Open and review construction proposals	38	act	mcc	mcc	mcc	mcc	mcc	mcc	mcc	mcc
cst	3	cbu	Submit recommendation for award of construction	19	act	sen	hou	mcc	mcc	mcc	mcc	mcc	mcc
cst	3	cco	Submit recommendation for award of construction	41	act	sen	hou	dmb	dmb	dmb	dmb	dmb	dmb
cst	3	cgo	Submit recommendation for award of construction	40	act	mcc	mcc	mcc	mcc	mcc	mcc	mcc	mcc
cst	4	cbu	Accept recommendation for award of construction	20	act	mcc	mcc	mcc	mcc	mcc	mcc	mcc	mcc
cst	4	cco	Accept recommendation for award of construction	43	act	sen	hou	dmb	dmb	dmb	dmb	dmb	dmb
cst	4	cgo	Accept recommendation for award of construction	42	act	mcc	mcc	mcc	mcc	mcc	mcc	mcc	mcc
cst	5	cbu	Issue construction award letter	21	act	mcc	mcc	mcc	mcc	mcc	mcc	mcc	mcc
cst	5	cco	Issue construction award letter	45	act	sen	hou	dmb	dmb	dmb	dmb	dmb	dmb
cst	5	cgo	Issue construction award letter	44	act	mcc	mcc	mcc	mcc	mcc	mcc	mcc	mcc

listed in phase, sequence, area order

work phase	seq	area	activity or name	oen	type	sen osp	hou osp	public	serv	misc	struct	ext skin	site
cst	6	cbu	Submit and receive contract bond & insurance	22	act	mcc	mcc	mcc	mcc	mcc	mcc	mcc	mcc
cst	6	cco	Submit and receive contract bond & insurance	55	act	sen	hou	dmb	dmb	dmb	dmb	dmb	dmb
cst	6	cgo	Submit and receive contract bond & insurance	54	act	mcc	mcc	mcc	mcc	mcc	mcc	mcc	mcc
cst	7	cbu	Execute construction contract	23	act	mcc	mcc	mcc	mcc	mcc	mcc	mcc	mcc
cst	7	cco	Execute construction contract	47	act	sen	hou	dmb	dmb	dmb	dmb	dmb	dmb
cst	7	cgo	Execute construction contract	46	act	mcc	mcc	mcc	mcc	mcc	mcc	mcc	mcc
cst	8	cbu	Hold pre construction meeting with selected	26	act	mcc	mcc	mcc	mcc	mcc	mcc	mcc	mcc
cst	8	cco	Hold pre construction meeting with selected	49	act	sen	hou	dmb	dmb	dmb	dmb	dmb	dmb
cst	8	cgo	Hold pre construction meeting with selected	48	act	mcc	mcc	mcc	mcc	mcc	mcc	mcc	mcc
cst	9	cbu	Issue contract and contract order (notice to proceed)	24	act	mcc	mcc	mcc	mcc	mcc	mcc	mcc	mcc
cst	9	cco	Issue contract and contract order (notice to proceed)	53	act	sen	hou	dmb	dmb	dmb	dmb	dmb	dmb
cst	9	cgo	Issue contract and contract order (notice to proceed)	52	act	mcc	mcc	mcc	mcc	mcc	mcc	mcc	mcc

listed in phase, sequence, area order

work phase	seq	area	activity or name	oen	type	sen osp	hou osp	public	serv	misc	struct	ext skin	site
cst	10	cbu	Administer construction work	27	act	mcc	mcc	mcc	mcc	mcc	mcc	mcc	mcc
cst	10	cco	Administer construction work	30	act	sen	hou	dmb	dmb	dmb	dmb	dmb	dmb
cst	10	cgo	Administer construction work	29	act	mcc	mcc	mcc	mcc	mcc	mcc	mcc	mcc

listed in phase, sequence, area order

12/12/88

## Plan #B - Activities to be done in Michigan Capitol Preservation Plan

1

work phase	seq	area	activity or name	oen	type	sen osp	hou osp	public	serv	misc	struct	ext skin	site
des	1	cbu	Prepare project program	1	act	sen	hou	mcc	mcc	mcc	mcc	mcc	mcc
des	1	cco	Prepare project program	32	act	sen	hou	dmb	dmb	dmb	dmb	dmb	dmb
des	1	cgo	Prepare project program	31	act	mcc	mcc	mcc	mcc	mcc	mcc	mcc	mcc
des	2	cbu	Review & approve project program	57	act	mcc	mcc	mcc	mcc	mcc	mcc	mcc	mcc
des	2	cco	Review & approve project program	59	act	sen	hou	dmb	dmb	dmb	dmb	dmb	dmb
des	2	cgo	Review & approve project program	58	act	mcc/ sen	mcc/ hou	mcc	mcc	mcc	mcc	mcc	mcc
des	3	cbu	Select and contract for professional design services	60	act	sen	hou	mcc	mcc	mcc	mcc	mcc	mcc
des	3	cco	Select and contract for professional design services	62	act	sen	hou	dmb	dmb	dmb	dmb	dmb	dmb
des	3	cgo	Select and contract for professional design services	61	act	mcc	mcc	mcc	mcc	mcc	mcc	mcc	mcc
des	4	cbu	Prepare design and construction documents	63	act	sen	hou	mcc	mcc	mcc	mcc	mcc	mcc
des	4	cco	Prepare design and construction documents	65	act	sen	hou	dmb	dmb	dmb	dmb	dmb	dmb
des	4	cgo	Prepare design and construction documents	64	act	mcc	mcc	mcc	mcc	mcc	mcc	mcc	mcc

listed in phase, sequence, area order

work phase	seq	area	activity or name	oen	type	sen osp	hou osp	public	serv	misc	struct	ext skin	site
des	5	cbu	Review and approve design and construction documents	66	act	mcc/sen	mcc/hou	mcc	mcc	mcc	mcc	mcc	mcc
des	5	cco	Review and approve design and construction documents	68	act	sen	hou	dmb	dmb	dmb	dmb	dmb	dmb
des	5	cgo	Review and approve design and construction documents	67	act	mcc/sen	mcc/sen	mcc	mcc	mcc	mcc	mcc	mcc
des	6	cbu	Issue contract documents for construction proposals	14	act	sen	hou	mcc	mcc	mcc	mcc	mcc	mcc
des	6	cco	Issue contract documents for construction proposals	35	act	sen	hou	mcc	mcc	mcc	mcc	mcc	mcc
des	6	cgo	Issue contract documents for construction proposals	34	act	mcc	mcc	mcc	mcc	mcc	mcc	mcc	mcc
des	7	cbu	Hold prebid document review meeting for construction	25	act	sen	hou	mcc	mcc	mcc	mcc	mcc	mcc
des	7	cco	Hold prebid document review meeting for construction	51	act	sen	hou	dmb	dmb	dmb	dmb	dmb	dmb
des	7	cgo	Hold prebid document review meeting for construction	50	act	mcc	mcc	mcc	mcc	mcc	mcc	mcc	mcc
cst	1	cbu	Prepare & receive construction proposals	16	act	sen	hou	mcc	mcc	mcc	mcc	mcc	mcc
cst	1	cco	Prepare & receive construction proposals	37	act	sen	hou	dmb	dmb	dmb	dmb	dmb	dmb
cst	1	cgo	Prepare & receive construction proposals	36	act	mcc	mcc	mcc	mcc	mcc	mcc	mcc	mcc

listed in phase, sequence, area order

work phase	seq	area	activity or name	oen	type	sen osp	hou osp	public	serv	misc	struct	ext skin	site
cst	2	cbu	Open and review construction proposals	17	act	sen	hou	mcc	mcc	mcc	mcc	mcc	mcc
cst	2	cco	Open and review construction proposals	39	act	sen	hou	dmb	dmb	dmb	dmb	dmb	dmb
cst	2	cgo	Open and review construction proposals	38	act	mcc	mcc	mcc	mcc	mcc	mcc	mcc	mcc
cst	3	cbu	Submit recommendation for award of construction	19	act	sen	hou	mcc	mcc	mcc	mcc	mcc	mcc
cst	3	cco	Submit recommendation for award of construction	41	act	sen	hou	dmb	dmb	dmb	dmb	dmb	dmb
cst	3	cgo	Submit recommendation for award of construction	40	act	mcc	mcc	mcc	mcc	mcc	mcc	mcc	mcc
cst	4	cbu	Accept recommendation for award of construction	20	act	mcc	mcc	mcc	mcc	mcc	mcc	mcc	mcc
cst	4	cco	Accept recommendation for award of construction	43	act	sen	hou	dmb	dmb	dmb	dmb	dmb	dmb
cst	4	cgo	Accept recommendation for award of construction	42	act	mcc	mcc	mcc	mcc	mcc	mcc	mcc	mcc
cst	5	cbu	Issue construction award letter	21	act	sen	hou	mcc	mcc	mcc	mcc	mcc	mcc
cst	5	cco	Issue construction award letter	45	act	sen	hou	dmb	dmb	dmb	dmb	dmb	dmb
cst	5	cgo	Issue construction award letter	44	act	mcc	mcc	mcc	mcc	mcc	mcc	mcc	mcc

listed in phase, sequence, area order



work phase	seq	area	activity or name	oen	type	sen osp	hou osp	public	serv	misc	struct	ext skin	site
cst	6	cbu	Submit and receive contract bond & insurance	22	act	sen	hou	mcc	mcc	mcc	mcc	mcc	mcc
cst	6	cco	Submit and receive contract bond & insurance	55	act	sen	hou	dmb	dmb	dmb	dmb	dmb	dmb
cst	6	cgo	Submit and receive contract bond & insurance	54	act	mcc	mcc	mcc	mcc	mcc	mcc	mcc	mcc
cst	7	cbu	Execute construction contract	23	act	sen	hou	mcc	mcc	mcc	mcc	mcc	mcc
cst	7	cco	Execute construction contract	47	act	sen	hou	dmb	dmb	dmb	dmb	dmb	dmb
cst	7	cgo	Execute construction contract	46	act	mcc	mcc	mcc	mcc	mcc	mcc	mcc	mcc
cst	8	cbu	Hold pre construction meeting with selected	26	act	sen	hou	mcc	mcc	mcc	mcc	mcc	mcc
cst	8	cco	Hold pre construction meeting with selected	49	act	sen	hou	dmb	dmb	dmb	dmb	dmb	dmb
cst	8	cgo	Hold pre construction meeting with selected	48	act	mcc	mcc	mcc	mcc	mcc	mcc	mcc	mcc
cst	9	cbu	Issued contract and contract order (notice to proceed)	24	act	sen	hou	mcc	mcc	mcc	mcc	mcc	mcc
cst	9	cco	Issue contract and contract order (notice to proceed)	53	act	sen	hou	dmb	dmb	dmb	dmb	dmb	dmb
cst	9	cgo	Issue contract and contract order (notice to proceed)	52	act	mcc	mcc	mcc	mcc	mcc	mcc	mcc	mcc

listed in phase, sequence, area order

work phase	seq	area	activity or name	oen	type	sen osp	hou osp	public	serv	misc	struct	ext skin	site
cst	10	cbu	Administer construction work	27	act	sen	hou	mcc	mcc	mcc	mcc	mcc	mcc
cst	10	cco	Administer construction work	30	act	sen	hou	dmb	dmb	dmb	dmb	dmb	dmb
cst	10	cgo	Administer construction work	29	act	mcc	mcc	mcc	mcc	mcc	mcc	mcc	mcc

listed in phase, sequence, area order

work phase	seq	area	activity or name	oen	type	sen osp	hou osp	public	serv	misc	struct	ext skin	site
des	1	cbu	Prepare project program	1	act	sen	hou	mcc	mcc	mcc	mcc	mcc	mcc
des	2	cbu	Review & approve project program	57	act	mcc	mcc	mcc	mcc	mcc	mcc	mcc	mcc
des	3	cbu	Select and contract for professional design services	60	act	sen	hou	mcc	mcc	mcc	mcc	mcc	mcc
des	4	cbu	Prepare design and construction documents	63	act	sen	hou	mcc	mcc	mcc	mcc	mcc	mcc
des	5	cbu	Review and approve design and construction documents	66	act	mcc/sen	mcc/hou	mcc	mcc	mcc	mcc	mcc	mcc
des	6	cbu	Issue contract documents for construction proposals	14	act	sen	hou	mcc	mcc	mcc	mcc	mcc	mcc
des	7	cbu	Hold prebid document review meeting for construction	25	act	sen	hou	mcc	mcc	mcc	mcc	mcc	mcc
cst	1	cbu	Prepare & receive construction proposals	16	act	sen	hou	mcc	mcc	mcc	mcc	mcc	mcc
cst	2	cbu	Open and review construction proposals	17	act	sen	hou	mcc	mcc	mcc	mcc	mcc	mcc
cst	3	cbu	Submit recommendation for award of construction	19	act	sen	hou	mcc	mcc	mcc	mcc	mcc	mcc
cst	4	cbu	Accept recommendation for award of construction	20	act	mcc	mcc	mcc	mcc	mcc	mcc	mcc	mcc
cst	5	cbu	Issue construction award letter	21	act	sen	hou	mcc	mcc	mcc	mcc	mcc	mcc

listed in phase, sequence, area order

12/12/88

## Plan #B - Activities to be done in Michigan Capitol Preservation Plan

2

work phase	seq	area	activity or name	oen	type	sen osp	hou osp	public	serv	misc	struct	ext skin	site
cst	6	cbu	Submit and receive contract bond & insurance	22	act	sen	hou	mcc	mcc	mcc	mcc	mcc	mcc
cst	7	cbu	Execute construction contract	23	act	sen	hou	mcc	mcc	mcc	mcc	mcc	mcc
cst	8	cbu	Hold pre construction meeting with selected	26	act	sen	hou	mcc	mcc	mcc	mcc	mcc	mcc
cst	9	cbu	Issued contract and contract order (notice to proceed)	24	act	sen	hou	mcc	mcc	mcc	mcc	mcc	mcc
cst	10	cbu	Administer construction work	27	act	sen	hou	mcc	mcc	mcc	mcc	mcc	mcc

listed in phase, sequence, area order

work phase	seq	area	activity or name	oen	type	sen osp	hou osp	public	serv	misc	struct	ext skin	site
des	1	cbu	Prepare project program	1	act	sen	hou	mcc	mcc	mcc	mcc	mcc	mcc
des	2	cbu	Review & approve project program	57	act	mcc	mcc	mcc	mcc	mcc	mcc	mcc	mcc
des	3	cbu	Select and contract for professional design services	60	act	sen	hou	mcc	mcc	mcc	mcc	mcc	mcc
des	4	cbu	Prepare design and construction documents	63	act	sen	hou	mcc	mcc	mcc	mcc	mcc	mcc
des	5	cbu	Review and approve design and construction documents	66	act	mcc/sen	mcc/hou	mcc	mcc	mcc	mcc	mcc	mcc
des	6	cbu	Issue contract documents for construction proposals	14	act	sen	hou	mcc	mcc	mcc	mcc	mcc	mcc
des	7	cbu	Hold prebid document review meeting for construction	25	act	mcc	mcc	mcc	mcc	mcc	mcc	mcc	mcc
cst	1	cbu	Prepare & receive construction proposals	16	act	mcc	mcc	mcc	mcc	mcc	mcc	mcc	mcc
cst	2	cbu	Open and review construction proposals	17	act	mcc	mcc	mcc	mcc	mcc	mcc	mcc	mcc
cst	3	cbu	Submit recommendation for award of construction	19	act	sen	hou	mcc	mcc	mcc	mcc	mcc	mcc
cst	4	cbu	Accept recommendation for award of construction	20	act	mcc	mcc	mcc	mcc	mcc	mcc	mcc	mcc
cst	5	cbu	Issue construction award letter	21	act	mcc	mcc	mcc	mcc	mcc	mcc	mcc	mcc

listed in phase, sequence, area order

work phase	seq	area	activity or name	oen	type	sen osp	hou osp	public	serv	misc	struct	ext skin	site
cst	6	cbu	Submit and receive contract bond & insurance	22	act	mcc	mcc	mcc	mcc	mcc	mcc	mcc	mcc
cst	7	cbu	Execute construction contract	23	act	mcc	mcc	mcc	mcc	mcc	mcc	mcc	mcc
cst	8	cbu	Hold pre construction meeting with selected	26	act	mcc	mcc	mcc	mcc	mcc	mcc	mcc	mcc
cst	9	cbu	Issue contract and contract order (notice to proceed)	24	act	mcc	mcc	mcc	mcc	mcc	mcc	mcc	mcc
cst	10	cbu	Administer construction work	27	act	mcc	mcc	mcc	mcc	mcc	mcc	mcc	mcc

listed in phase, sequence, area order

9/27/88  
Session 14

**Handouts to discuss with Mr. Solomon**

● **Glossary for mcc**

● **Capitol Building**

The Capitol building structure within the building lines, including the exterior stairs, the north underground annex and the detached trailer group presently occupied by the House Appropriations staff. The Capitol building is sometimes referred to as the Capitol proper.

● **Capitol Building Infrastructure**

The direct and related mechanical, electrical, architectural and structural work required for the Capitol Restoration Program, and concerning the neutral spaces bounding the occupant spaces in the Capitol building.

● **Capitol Building Infrastructure**

The direct and related mechanical, electrical, architectural and structural work required for the Capitol Restoration Program, and concerning the neutral spaces bounding the occupant spaces in the Capitol building.

● **Capitol Complex Infrastructure**

The direct and related mechanical, electrical, architectural and structural work required for the Capitol Restoration Program, and concerning the neutral spaces bounding the occupant spaces in the Capitol complex.

● **Capitol Restoration Plan**

The full plan of physical development resulting when all three Missions of Operation Capitol have been achieved.

● **Infrastructure**

Mechanical, electrical, architectural & structural components of the historical restoration program that are located outside the boundary of an occupant space. These spaces are currently being called neutral spaces and are generally considered public or common areas.

Where the infrastructure has a specific location it will be designated. For example, Capitol Building infrastructure. Such designation gives the infrastructure the same boundaries as the specific location description.

● **Master space program**

The study report to be prepared by hepy and defining the space and cost characteristics of all anticipated moves that will be required

## Handouts to discuss with Mr. Solomon

in the implementation of Operation Capitol Mission A and the Mission A related intermediate infrastructure needs.

- **Mission**

The goal of a major portion or segment of any total effort. As an example the restoration of the Capitol building proper is one of the missions of Operation Capitol to be achieved within the Capitol complex.

- **Mission A**

MISSION A.

Operation Capitol Mission A will be achieved when the Capitol Building itself is totally restored within the concepts of work scope outlined in the Preservation Master Plan, part 3, entitled Restoration.

- **Mission B**

MISSION B

Operation Capitol Mission B will be achieved when the Capitol complex, including the Capitol grounds, has been designated as a State park, and has achieved the physical status of a State park as proposed by the Revitalization Committee.

- **Mission C**

MISSION C

Operation Capitol Mission C will be achieved when the support facilities, including streets, signing, lighting, structures and other public area site improvements (pasi) outside the Capitol complex have been brought to the level of improvement defined by the Revitalization Committee.

- **Neutral space**

Space for which the Department of Management and Budget has the responsibility and/or authority for which to design, construct and maintain. Neutral space is usually that outside the occupant space boundary.



## Handouts to discuss with Mr. Solomon

An important element of neutral space is often the above ceiling or below floor areas adjoining occupant spaces.

Detailed definition of occupant space and neutral space is the joint responsibility of the occupant and the Department of Management and Budget

- **Occupant space**

Space for which the responsibility and/or authority for design, construction and maintenance is assumed by a State agency or organization other than the Department of Management and Budget. Examples of occupant space are the House or the Senate chambers and related facilities.

See the glossary definition of neutral space for additional comments.

- **Operation Capitol**

The full set of programs and projects making up the Capitol Restoration Plan.

- **Preservation Master Plan**

The document prepared for the Friends of the Capitol, Incorporated by Richard C. Frank FAIA, dated 15 May, 1987, and entitled Preservation Master Plan, Michigan State Capitol, Lansing Michigan - Final Report.

This plan was prepared to answer the question of how best to preserve the Michigan State Capitol (page vi). It sets out a main goal and several related objectives (pages 1 & 2). These goals and objectives are further defined by a series of recommended tasks which indicate in relatively broad design and technical terms what Mr. Frank suggests as a work plan outline for the total master planning process (pages 3, 4 & 5).

It is important to recognize that the Preservation work plan outline provides guidelines to the work that might be engaged in to achieve the Capitol preservation. They do not provide specific and detailed project programs for each major project to be accomplished. This is to be done as each project within the missions is considered, authorized, funded, designed and built.

## Handouts to discuss with Mr. Solomon

Equally important is that the Preservation work plan does not establish a working organizational model by which the preservation work is to be done. This is a State of Michigan Government responsibility.

### ● Program

The narrative and graphic statement of the needs of the occupants and the corresponding characteristics of the space that will satisfy these needs.

The purpose of a program is to establish the substantial cost, design and construction requirements of a specific project. The planners, architects & engineers are responsible for translating the program into a specific project design.

### ● Operation Capitol components

#### ● Operation Capitol

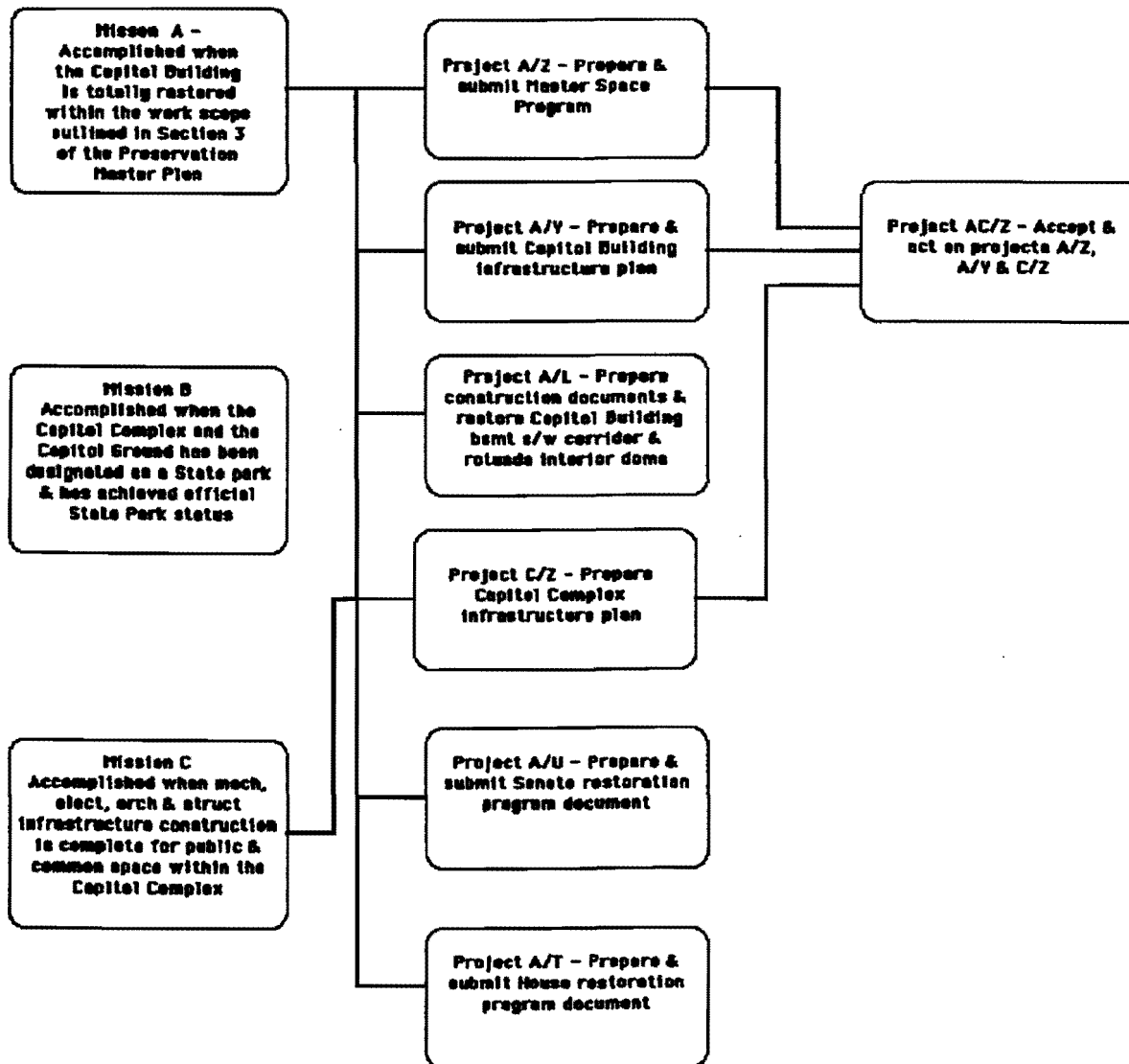
##### ● Mission A projects

Totally restore Capitol Building within work scope outlined in Section 3 of the Preservation Master Plan

- AC/Z - Accept & act on A/Z, A/Y, C/Z
- A/Z - Prepare master space program (msp)
- A/Y - Prepare Capitol Building Infrastructure plan (cbip)
- A/X - Prepare construction documents for Senate occupancy
- A/W - Prepare construction documents for House occupancy
- A/V - Prepare infrastruct const documents for Capitol Building
- A/U - Dick Frank prepare Senate restoration program document
  - Complete & submitted to Secy of Senate as of August, 1988
- A/T - Prepare House restoration program document
- A/S - Prepare Capitol Building infrastructure restoration program document
- A/R - Prepare interim Senate space requirements program & design
- A/Q - Prepare interim House space requirements program & design
- A/P - Make Senate interim move
- A/D - Acquire space for Senate interim move

## Handouts to discuss with Mr. Solomon

- A/N - Make House interim move
- A/M - Acquire space for House interim move
- A/L - Prepare construction documents & restore Capitol Building bsmt e/w corridor & rotunda
- A/K - Remove all overfloor structures in Capitol building
- A/J - Construct infrastructure work at neutral spaces in Capitol building
- A/I - Restore Senate areas in Capitol Building
- A/H - Restore House areas in Capitol Building
- A/G - Reoccupy restored Senate areas in Capitol Building
- A/F - Reoccupy restored House areas in Capitol Building
- A/E - Executive office design & restoration
- etc.
- Mission B
  - To have the Capitol complex designated as a State Park and to have achieved official status as a State Park.
  - B/Z
  - etc.
- Mission C
  - To complete all mechanical, electrical, architectural & structural infrastructure work for public and common space within the Capitol Complex.
  - C/Z - Prepare Capitol Complex Infrastructure plan (ccip)
  - C/Y
  - etc.



**FLOW CHART FOR EARLY WORK ON  
MICHIGAN CAPITOL RESTORATION  
PROGRAM - MISSIONS A, B & C  
Department of Management & Budget  
Lansing, Michigan**

Issue #1 - September 5, 1988  
Issue #2 - September 27, 1988  
12caprestprojtree - disk 156

Ralph J. Stephenson PE PC  
Consulting Engineer  
15064 Warwick Road  
Detroit, Michigan 48223  
ph 313 273 5026

9:18:08 AM 9/15/88 - Session #3

9:18:08 AM 9/15/88 - Session #3. . . . . 1

Michigan State Capitol Restoration notes for 9/8/88 . . . . . 1

By Ralph J. Stephenson PE . . . . . 1

Those at meeting . . . . . 1

Larry Bennett - Acting Director - Office of Facilities . . . . . 1

Eduard Markwart - Director of Design - Office of Facilities . . . . . 1

Ralph J. Stephenson PE - Consultant . . . . . 1

Herb DeJonge - Deputy Director DMB - in meeting part time. . . . . 1

Agenda . . . . . 1

Review & correct notes from previous meeting. . . . . 1

Decide on graphics for showing hierarchy of elements of program . . . . . 1

Prepare graphics for showing relation of missions, stages & projects. . . . . 1

Discuss and outline presentation to sso & hde . . . . . 1

Prepare summary plans for mission A . . . . . 1

Review & refine laundry list for stages . . . . . 1

Prepare laundry lists for stages . . . . . 1

Add stage definitions for other preconstruction work . . . . . 1

Add stage definitions for construction work . . . . . 1

Discussion points to cover with hde in pm meeting . . . . . 1

Current status of work . . . . . 1

Current thinking on program . . . . . 2

Schedules of presentation to sso and mcc. . . . . 2

Review of stage & project items. . . . . 2

What are all the program items of major importance to be done? . . . . . 2

Test example for identifying projects within a sub program . . . . . 2

What are the stages (as stage may be applicable)? . . . . . 2

**9:18:08 AM 9/15/88 - Session #3**

**● Michigan State Capitol Restoration notes for 9/8/88**

**● By Ralph J. Stephenson PE**

**● Those at meeting**

- Larry Bennett - Acting Director - Office of Facilities
- Eduard Markwart - Director of Design - Office of Facilities
- Ralph J. Stephenson PE - Consultant
- Herb DeJonge - Deputy Director DMB - in meeting part time

**● Agenda**

- Review & correct notes from previous meeting
  - Distributed to Larry Bennett and Eduard Markwart
- Decide on graphics for showing hierarchy of elements of program
- Prepare graphics for showing relation of missions, stages & projects
- Discuss and outline presentation to sso & hde
- Prepare summary plans for mission A
- Review & refine laundry list for stages

The work stage is to be reconsidered and perhaps replaced by sub program or perhaps eliminated and replaced by project.

- A/Z - Master space study (mss)
  - A/Y - Capitol Building Infrastructure plan (cbip)
  - C/Z - Capitol Complex Infrastructure plan (ccip)
  - AC/Z - Acceptance & action on mss, cbip & ccip
  - Prepare laundry lists for stages
    - A/X - Construction documents for Senate occupancy
    - A/W - Construction documents for House occupancy
    - A/V - Infrastruct const documents for Capitol Building
  - Add stage definitions for other preconstruction work
    - A/U - Dick Frank's Senate restoration program document
      - Complete & submitted to Secy of Senate as of August, 1988
    - A/T - House restoration program document
    - A/S - Neutral space restoration program document
    - A/R - Interim Senate space requirements program & design
    - A/Q - Interim House space requirements program & design
    - A/P - Senate interim move
  - Add stage definitions for construction work
- Discussion points to cover with hde in pm meeting**
- Current status of work

- **Current thinking on program**
- **Schedules of presentation to sso and mcc**
- **Review of stage & project items**
  - **What are all the program items of major importance to be done?**
    - A/Z - Master space study (mss)
    - A/Y - Capitol Building Infrastructure plan (cbip)
    - C/Z - Capitol Complex Infrastructure plan (ccip)
    - AC/Z - Acceptance & action on mss, cbip & ccip
    - A/X - Construction documents for Senate occupancy
    - A/W - Construction documents for House occupancy
    - A/V - Infrastruct const documents for Capitol Building
    - A/U - Dick Frank's Senate restoration program document
      - Complete & submitted to Secy of Senate as of August, 1988
    - A/T - House restoration program document
    - A/S - Neutral space restoration program document
    - A/R - Interim Senate space requirements program & design
    - A/Q - Interim House space requirements program & design
    - A/P - Senate interim move
    - Executive office move
    - Executive office area restoration
    - Basement east/west corridor & rotunda restoration
  - **Test example for identifying projects within a sub program**
    - Sample objective - To get to a point where we can start Senate area demolition
      - Obtain legislative funding for work
      - Determine what the physical space make up & plan is to be?
        - The starting space?
        - The interim space?
        - The final space?
      - Locate new interim space for Senate functions
        - Lease
        - Build
        - Renovate
        - Other
      - Vacate currently occupied areas
  - **What are the stages (as stage may be applicable)?**
    - Mission A
      - Stage - To restore the Senate space in the Capitol building

9:18:08 AM 9/15/88 - Session #3

- Stage - Prepare master space study (mss) (A/Z)
- Stage - To restore the House space in the Capitol building
- Stage - To restore the neutral spaces in the Capitol building
- Stage - To restore the executive spaces in the Capitol building
- Stage - To restore the Supreme Court spaces in the Capitol building



**Mission A**  
Accomplished when the Capitol Building is totally restored within the work scope outlined in Section 3 of the Preservation Master Plan

Stage A/I - Prepare & submit heavy master space study (mss)

Stage A/II - Accept & act on master space study & Capitol Bldg & Complex infrastruct plans

Stage A/1 - Prepare construction documents for Senate occupancy

Stage A/Y - Prepare & submit Capitol Building infrastructure plan (cbip)

Stage A/O - Prepare construction documents for House occupancy

Stage A/E - Prepare const documents for Capitol Building infrastructure work

**Mission B**  
Accomplished when the Capitol Complex and the Capitol Ground has been designated as a State park & has achieved official State Park status

**Mission C**  
Accomplished when mech, elect, arch & struct infrastructure construction is complete for public & common space within the Capitol Complex

Stage A/T - Prepare & submit Capitol Complex infrastructure plan (ccip)

**FLOW CHART FOR EARLY WORK ON MICHIGAN CAPITOL RESTORATION PROGRAM - MISSIONS A, B & C**  
Department of Management & Budget  
Lansing, Michigan

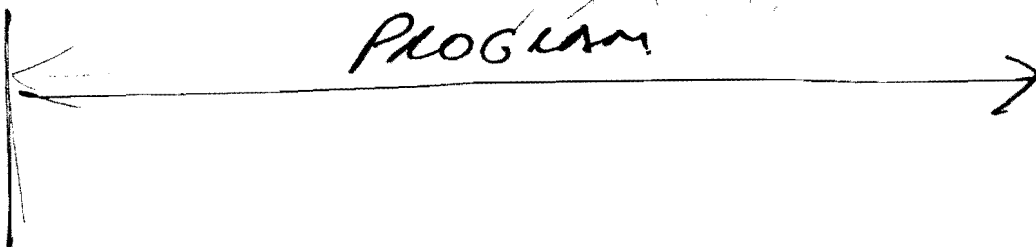
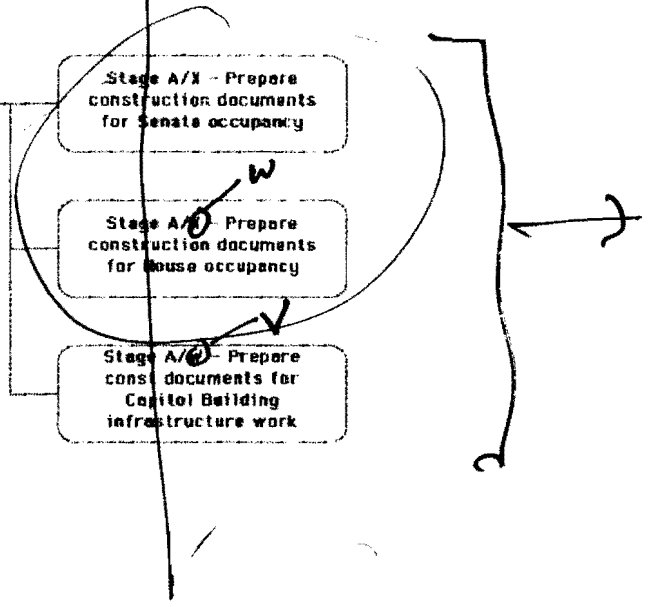
Issue #1 - September 5, 1986  
Ralph J. Stephenson PE/EC  
Consulting Engineer  
15064 Warwick Road  
Detroit, Michigan 48223  
ph 313 273 5026

REDEFINING

PROGRAM

*Handwritten scribble*

*c/z*



Michigan State Capitol Restoration Plan notes - d157 . . . . .	1
General information - to be updated as program proceeds . . . . .	1
Division of responsibility and authority for the total restoration program . . . . .	1
Those involved. . . . .	1
Abbreviations . . . . .	1
Suggested words to describe segments of work. . . . .	2
Responsibility Codes . . . . .	3
Missions . . . . .	3
Hierarchy of work in Capitol Restoration Program (crr) . . . . .	3
Characteristics of program. . . . .	4
Glossary of terms . . . . .	6
Laundry lists. . . . .	8
9:21:39 AM 8/23/88 - Session #1. . . . .	12
Michigan State Capitol Restoration notes for 8/23/88 . . . . .	12
By Ralph J. Stephenson PE . . . . .	12
Those at meeting . . . . .	12
Agenda . . . . .	12
Those involved. . . . .	12
General notes . . . . .	12
Abbreviations . . . . .	13
Responsibility Codes . . . . .	13
Characteristics of program. . . . .	13
Glossary of terms . . . . .	15
Preliminary outline of procedures for planning the program . . . . .	15
Laundry lists. . . . .	17
9:07:45 AM 9/8/88 - Session #2 . . . . .	21
Michigan State Capitol Restoration notes for 9/8/88 . . . . .	21
By Ralph J. Stephenson PE . . . . .	21
Those at meeting . . . . .	21
Agenda . . . . .	21
Scope of dmb planning work is currently authorized as noted below . . . . .	21
Extended definition of missions . . . . .	23
Assumptions for initial work on planning total Capitol Restoration Program . . . . .	27
General comments. . . . .	28

## **Michigan State Capitol Restoration Plan notes - d157**

### **1. General information - to be updated as program proceeds**

#### **1. Division of responsibility and authority for the total restoration program**

The basic viewpoint and philosophy of the total Capitol Restoration Program is that the senate and the house, along with other groups as defined during the progress of the work, are to be considered spaces that are the responsibility and under the authority of the senate, the house or other non dmb groups designated. The remaining spaces in the Capitol Complex are known as neutral spaces (in which infrastructure work is installed), and are the responsibility of and under the authority of the Department of Management and Budget.

See infrastructure definition and discussions below for further information on this basic approach.

#### **2. Those involved**

##### **1. Department of Management and Budget**

###### **1. Director's staff**

- 1. Shelby Solomon - Director - Department of Management & Budget**
- 2. Herb DeJonge - Deputy director - Department of Management & Budget**

###### **2. Office of Facilities**

- 1. Larry Bennett - Acting director - Office of Facilities**
- 2. Eduard Markwart - Director of design - Office of Facilities**

##### **2. Capitol Committee**

- 1. Rep Richard A. Young - Chairman - Michigan Capitol Committee**

##### **3. JCOS**

##### **4. Revitalization Committee**

##### **5. Friends of the Capitol**

##### **6. Richard C. Frank FAIA - consultant**

##### **7. Ralph J. Stephenson PE - Consultant**

##### **8. Harley, Ellington, Pierce, Yee - Alternative space consultants**

#### **3. Abbreviations**

- 1. dmb - Department of Management and Budget - dmb**
- 2. ema - Markwart, Eduard - ema**
- 3. hde - DeJonge, Herb - hde**
- 4. hepy - Harley, Ellington, Pierce & Yee - hepy**
- 5. iss - Infrastructure study - iss**

- 6. jcos - Joint Capitol Outlays Subcommittee - jcos
- 7. lbe - Bennett, Larry - lbe
- 8. mcc - Michigan Capitol Committee - mcc
- 9. mscr - Michigan State Capitol Restoration - mscr
- 10. mss - Master space study - being done by hepy - mss
- 11. nsp - Neutral space - nsp
- 12. osp - Occupant space - osp
- 13. pa - Public Act - pa
- 14. rjs - Ralph J. Stephenson - rjs
- 15. ryo - Young, Richard A. - ryo
- 16. scr - State Capitol Restoration - scr
- 17. sso - Solomon, Shelby - sso
- 18. rvc - Revitalization committee - rvc
- 19. pad - Program Administrators - pad
- 20. cbip - Capitol Building infrastructure plan - cbip
- 21. ccip - Capitol Complex infrastructure plan - ccip

4. Suggested words to describe segments of work

\* Words marked by an asterisk in the list below have been used in the program notes and are also defined in the glossary of terms and in the hierarchy of work for the Capitol Restoration. Both sections are contained in the general notes for the program.

- 1. \*Mission
- 2. \*Program
- 3. \*Project
- 4. \*Stage
- 5. Act
- 6. Action
- 7. Alternate
- 8. Area
- 9. Aspect
- 10. Branch
- 11. Chain
- 12. Collection
- 13. Component
- 14. Constituent
- 15. Division
- 16. Element
- 17. Entity

CCO     CAPITOL COMPLEX  
 CBU     CAPITOL BUILDING  
 CGO     CAPITOL GROUNDS

18. Facet
  19. Form
  20. Function
  21. Group
  22. Interval
  23. Issue
  24. Item
  25. Linkage
  26. Model
  27. Number
  28. Operation
  29. Outlook
  30. Parcel
  31. Part
  32. Phase
  33. Portion
  34. Procedure
  35. Scene
  36. Scheme
  37. Section
  38. Segment
  39. Sequence
  40. Simulation
  41. Step
  42. View
5. Responsibility Codes
  6. Missions
    1. A -
    2. B -
    3. C -
  7. Hierarchy of work in Capitol Restoration Program (crr)
    1. Mission - Basic statement of end result desired of a major effort
      1. Program - Largest set of action needed to accomplish one or more missions
        1. Stage - Main related actions to achieve objectives of one or more programs
          - Project - Related group of detailed work actions within one or more stages

Activity - Specific, well defined task within a project plan

8. Characteristics of program

1. Capitol Building

1. Plans are generally to use the building as a working capitol
2. Considerable deterioration of the facility
3. Not to be brought back to museum quality
4. Physical work being considered

1. Capitol Building restoration

Interior spaces

Has 7 working levels plus basement

Basement - not used for public access

Ground floor - at grade level - generally security, offices & public spaces

1st floor - generally office & public space

1st floor mezz

2nd floor - generally office, library, chambers & public spaces

2nd floor mezz

3rd floor - supreme court, library & offices

4th floor - generally committee rooms & rotunda area

Several open spaces now partitioned will be remodeled

Overflooring will be removed at several areas

Renovation projects

East/west basement hallways

Senate chamber

Demolish overflooring

Restore skylights

House chamber

Demolish overflooring

Restore skylights

Public areas

Corridors

Demolish overflooring

Rotunda

Grand stairs

Demolish overflooring

Supreme Court

Library

Demolish overflooring

Remove partitions

Offices

Demolish overflooring

Remove partitions

Exterior restoration being considered

Replace windows

Rehabilitate stone work

Relandscape Capitol grounds

Relight entire Capitol building exterior

5. Items affected by the Restoration Plan

1. Those that need correcting irrespective of restoration planning

Inadequate electrical capacity

No central air conditioning

No central ventilation system

Inadequate parking facilities

Mechanical plumbing inadequate

2. Impact areas external to the Capitol building

Tie in additional vertical transportation related to new parking

Horizontal & vertical people movement critical to expanded facility

Tunnel tie in from chiller building to the Capitol complex loop

Provide additional parking facilities

Currently considering the addition of 800 underground pkg spaces

West facility - 800 spaces proposed

Thinking about 3 levels of parking

No design as yet

Must be closely tied to external restoration of Capitol bldg

Might contain

Cafeteria

Conference rooms

No offices for elected officials being contemplated

Service facilities might be located in facility

Print shop

Provide mechanical & electrical equipment rooms

To be provided at locations to be set

Provide space for displaced legislators and staff

Will lose 40,000 sq ft in restoration of Capitol

Will probably need 80,000 sq ft to replace the space

## 9. Glossary of terms

### 1. Program Administrators

The staff of the Department of Management and Budget responsible for all infrastructure work in the total Capitol Restoration Program. The program administration staff will also be responsible as requested for any other aspect of the program as may be requested by occupants of the Capitol complex.

At present Mr. Larry Bennett and Mr. Eduard Markwart are acting as the program administrators for the restoration program.

### 2. Program

The full set of sub programs and projects making up the Capitol Restoration plan.

### 3. Project

A group of related work within one or more stages. A project may cross mission, program, and stage boundaries.

### 4. Brief

The narrative and graphic statement of the needs of the occupants and the corresponding characteristics of the space that will satisfy these needs.

### 5. FFE - fixtures, furniture & equipment

Those fixtures, furniture and equipment that is placed in the base building space. Generally the FFE is an item placed by the occupant in a finished base building space.

### 6. Capitol Proper

Same definition as for Capitol building



7. Capitol Building

The Capitol building structure within the building lines, including the exterior stairs, the north underground annex and the detached trailer group presently occupied by the House Appropriations staff. The Capitol building is sometimes referred to as the Capitol proper.

8. Capitol Complex

All property owned within the area bounded by Saginaw Street on the north, Logan Street on the west, Kalamazoo Street on the south, and the Grand <sup>AGE</sup>~~FIVE~~ on the east.

9. Capitol Grounds

The Capitol building and the area bounded by Capitol Avenue to the east, Ottawa Street to the north, Walnut Street to the west and Allegan Street to the south.

10. Capitol Park District

The area bounded by Capitol Avenue to the east, Ottawa Street to the north, Butler Street to the west, and Allegan Street to the south.

11. Capitol Building Infrastructure

The direct and related mechanical, electrical, architectural and structural work required for the Capitol Restoration Program, and concerning the neutral spaces bounding the occupant spaces in the Capitol building.


12. Capitol Complex Infrastructure

The direct and related mechanical, electrical, architectural and structural work required for the Capitol Restoration Program, and concerning the neutral spaces bounding the occupant spaces in the Capitol complex.

13. Occupant space

Space for which the responsibility and/or authority for design, construction and maintenance is assumed by a State agency or organization other than the Department of Management and Budget. Examples of occupant space are the House or the Senate chambers and related facilities.

See the glossary definition of neutral space for additional comments.

*Revised*  


14. Neutral space

Space for which the Department of Management and Budget has the responsibility and/or authority for which to design, construct and maintain. Neutral space is usually that outside the occupant space boundary.

An important element of neutral space is often the above ceiling space ~~above~~ <sup>or below</sup> occupant spaces. <sup>floor</sup>

Detailed definition of occupant space and neutral space is the joint responsibility of the occupant and the Department of Management and Budget

15. Stage

A set of related actions within any one or more mission programs

16. Core action

Those actions within the Capitol Restoration program that must be done irrespective of alternatives leading to and coming from the action.

17. Mission

A goal of a major portion or segment of any total effort. As an example the restoration of the Capitol building proper is a mission of the total Capitol restoration program within the Capitol complex.

10. Laundry lists

1. Mission A

MISSION A.

A major program mission will be achieved when the Capitol Building itself is totally restored within the concepts of work scope outlined in the Preservation Master Plan, part 3, entitled Restoration.

1. Sub program SC (Senate chambers)

SUB PROJECT SE

To have achieved the Senate chamber and support facility restoration desired, all served by effective operating

mechanical, electrical and life safety systems needed to properly occupy and use the chambers. This all in accordance with the required support space allocated in the Capitol building space program to accommodate the needs of the Senate.

1. Prepare master space allocation program for Capitol building
2. Complete prepare systems study
3. Select and retain project manager
2. Sub program EO (Executive offices)
  - The following division of responsibility for the restoration, design and installation of systems and areas might be applied to the Executive office space, now located on the 3rd floor in the east wing.
    1. To be redone!!!!
    2. Occupant - Executive staff and their consultants
      - Prepare brief (see glossary) needs within space boundaries
      - Design FFE
      - Select FFE
      - Purchase FFE
      - Install FFE
    3. Base building - Department of Management & Budget
      - Select base bldg design team
      - Request release of planning funds by JCOS
      - JCOS release planning funds
      - Execute base bldg design contract with design team
      - Prepare base bldg construction documents for occupant and base bldg work
        - To be done in accordance with the brief
        - Submit preliminary const documents to Capitol Committee
        - Capitol Committee review and approve preliminary const documents
        - Submit prelim const documents to JCOS
        - JCOS review and approve prelim const documents
        - Solicit base bldg construction proposals for occupant and base bldg work

Award base bldg contracts for occupant and base bldg work  
Provide base bldg const inspection services for occupant  
and base bldg work  
Process base bldg changes, pymts, close out for occupant  
and base bldg work  
Install FFE utility services to space boundary

3. Sub program HR (House of Representatives chambers)

The following division of responsibility for the restoration,  
design and installation of systems and areas might be  
applied to the House of Representative chambers and offices  
now located on the ground, 1st, 2nd, 2nd mezz & 3rd fls.

1. Occupant - House of Representatives and staff

- 01-Prepare occupant space brief (glossary) needs within  
space boundaries
- 02-Review & comment on base bldg brief
- 02-Submit occupant space brief to DMB for information &  
comment
- 03-Select FFE design and contractor team
- 03-Select occupant space design team
- 03-Select project manager for occupant work
- 04-Request release of occupant space planning funds by  
JCOS
- 05-JCOS release occupancy space planning funds
- 06-Execute contract with project manager for occupant  
work
- 06-Execute FFE design contracts
- 06-Execute occupant space design contract with design  
team
- 07-Prepare prelim occupant space construction documents  
    To be done in accordance with the brief
- 08-Design FFE installation
- 08-Submit prelim occupant space const documents to DMB  
for info & comment
- 08-Submit preliminary occupant space const documents to  
Capitol Committee
- 09-Capitol Committee review and appv prelim occupant  
space const documents
- 10-Submit prelim occupant space const documents to JCOS

- 11-JCOS approve prelim base bldg const documents
  - 12-Prepare & issue final occupant space construction documents
  - 13-Solicit & receive occupant space construction proposals
  - 13-Submit final occupant construction documents to DMB for info
  - 14-Award occupant space construction contracts
  - 15-Execute FFE furnish and install contract
  - 15-Process occupant space changes, pymts, close out
  - 15-Provide occupant space const inspection services
  - 15-Solicit & receive FFE proposals
  - 16-Install FFE
2. Base building - Department of Management & Budget
- 01-Review & comment on occupancy space brief
  - 02-Prepare base bldg brief (see glossary) needs
  - 03-Submit base bldg brief to space occupant for info & comment
  - 03-Select base bldg design team
  - 04-Request release of base building planning funds by JCOS
  - 05-JCOS release base building planning funds
  - 06-Execute base bldg design contract with design team
  - 07-Review & comment on occupant space prelim const documents
  - 07-Prepare prelim base bldg construction documents
    - To be done in accordance with the brief
  - 08-Submit preliminary base bldg const documents to Capitol Committee
  - 09-Capitol Committee review and approve prelim base bldg const documents
  - 10-Submit prelim base bldg const documents to JCOS
  - 11-JCOS approve prelim base bldg const documents
  - 12-Review occupant space final construction documents
  - 12-Prepare & issue final base building construction documents
  - 13-Submit final base building construction documents to occupant
  - 13-Solicit & receive base bldg construction proposals
  - 14-Award base bldg construction contracts

15-Provide base bldg const inspection services

15-Process base bldg changes, pymts, close out

**2. 9:21:39 AM 8/23/88 - Session #1**

1. Michigan State Capitol Restoration notes for 8/23/88
2. By Ralph J. Stephenson PE
3. Those at meeting
  1. Eduard Markwart - Director of Design - Office of Facilities
  2. Larry Bennett - Acting Director - Office of Facilities
  3. Ralph J. Stephenson PE - Consultant
4. Agenda
5. Those involved
  1. Department of Management and Budget
    1. Office of Facilities
      1. Larry Bennett - Acting director - Office of Facilities
      2. Eduard Markwart - Director of design - Office of Facilities
    2. Capitol Committee
    3. JCOS
    4. Revitalization Committee
    5. Friends of the Capitol
    6. Richard C. Frank FAIA - consultant
    7. Ralph J. Stephenson PE - Consultant
    8. Harley, Ellington, Pierce, Yee - Alternative space consultants
  2. Capitol Committee
  3. JCOS
  4. Revitalization Committee
  5. Friends of the Capitol
  6. Richard C. Frank FAIA - consultant
  7. Ralph J. Stephenson PE - Consultant
  8. Harley, Ellington, Pierce, Yee - Alternative space consultants
6. General notes
  1. Dick Frank's report mentioned use of a data base for Capitol bldg info
    1. Peachtext 5000
    2. Program called List Manager
  2. Early projects to be considered
    - Number in ( ) indicates current rating of the estimated consensus intensity from 1, the lowest, to 10, the most intense.
    1. (10) - Renovate ground floor east/west corridor public area
    2. (08) - Provide alternative space for legislators & staff on overfloors
    3. (07) - Provide additional parking spaces Z
      1. For executive office staff
      2. For legislators
      3. For legislator's staff
      4. For business visitors to the Capitol complex
    4. (06) - Renovate floors of Capitol building interior

1. Remove all overflooring
  2. Renovate Capitol building mech & elect systems
  3. Need additional mechanical and electrical equipment space
  5. (04) - Provide expanded central chiller facilities & connections
  6. (03) - Provide additional parking spaces H
    1. For Capitol complex employees
    2. For recreational visitors to the Capitol complex
  7. (01) - Convert Capitol complex to a State park
7. Abbreviations
  8. Responsibility Codes
  9. Characteristics of program
    1. Capitol Building
      1. Plans are generally to use the building as a working capitol
      2. Considerable deterioration of the facility
      3. Not to be brought back to museum quality
      4. Physical work being considered
        1. Capitol Building restoration
          - Interior spaces
            - Has 7 working levels plus basement
            - Basement - not used for public access
            - Ground floor - at grade level - generally security, offices & public spaces
            - 1st floor - generally office & public space
            - 1st floor mezz
            - 2nd floor - generally office, library, chambers & public spaces
            - 2nd floor mezz
            - 3rd floor - supreme court, library & offices
            - 4th floor - generally committee rooms & rotunda area
- Several open spaces now partitioned will be remodeled  
Overflooring will be removed at several areas  
Renovation projects
- East/west basement hallways
  - Senate chamber
    - Demolish overflooring
    - Restore skylights
  - House chamber

- Demolish overflooring
- Restore skylights
- Public areas
  - Corridors
    - Demolish overflooring
  - Rotunda
  - Grand stairs
    - Demolish overflooring
- Supreme Court
- Library
  - Demolish overflooring
  - Remove partitions
- Offices
  - Demolish overflooring
  - Remove partitions

Exterior restoration being considered

- Replace windows
- Rehabilitate stone work
- Relandscape Capitol grounds
- Relight entire Capitol building exterior

5. Items affected by the Restoration Plan

1. Those that need correcting irrespective of restoration planning
  - Inadequate electrical capacity
  - No central air conditioning
  - No central ventilation system
  - Inadequate parking facilities
  - Mechanical plumbing inadequate
2. Impact areas external to the Capitol building
  - Tie in additional vertical transportation related to new parking
  - Horizontal & vertical people movement critical to expanded facility
  - Tunnel tie in from chiller building to the Capitol complex loop
  - Provide additional parking facilities
    - Currently considering the addition of 800 underground pkg spaces
    - West facility - 800 spaces proposed



Thinking about 3 levels of parking  
No design as yet  
Must be closely tied to external restoration of  
Capitol bldg  
Might contain  
    Cafeteria  
    Conference rooms  
    No offices for elected officials being  
    contemplated  
    Service facilities might be located in  
    facility  
        Print shop

Provide mechanical & electrical equipment rooms

To be provided at locations to be set

Provide space for displaced legislators and staff

Will lose 40,000 sq ft in restoration of Capitol

Will probably need 80,000 sq ft to replace the space

10. Glossary of terms

1. Program

The full set of projects making up the Capitol Restoration plan.

2. Project

An individual group of restoration work within the total program.

3. Brief

The narrative and graphic statement of the needs of the occupants and the corresponding characteristics of the space that will satisfy these needs.

4. FFE - fixtures, furniture & equipment

Those fixtures, furniture and equipment that is placed in the base building space. Generally the FFE is an item placed by the occupant in a finished base building space.

11. Preliminary outline of procedures for planning the program

To start the planning process for the entire program, we should first make a set of assumptions within which it seems technically feasible to proceed with an action plan of implementation.

This begins with a clear definition of the missions to be accomplished (accomplishment of targets without numerical

definition).

MISSION A.

A major program mission will be achieved when the Capitol Building itself is totally restored within the concepts of work scope outlined in the Preservation Master Plan, part 3, entitled Restoration.

MISSION B

Another major program mission will be achieved when the Capitol complex, including the Capitol grounds, has been designated as a State park, and has achieved the physical status of a State park as proposed by the Revitalization Committee.

MISSION C

A third major program mission will be achieved when the support facilities, including streets, signing, lighting, structures and other public area site improvements (pasi) outside the Capitol complex have been brought to the level of improvement defined by the Revitalization Committee.

\* \* \*

Within the major missions it is recognized that the work in any specific area such as the Senate or House of Representative chambers may be done in various decentralized project delivery modes. The basic Capitol building work which is common to and serves special spaces will probably remain the responsibility of the Department of Management and Budget. Thus the division of planning, design, construction, management and maintenance within the Capitol Building could be divided between base building systems and space occupant systems.

Once the mission definition has been made, the next step is to define subproject goals within each of the missions. These are major phase points reached at intermediate times on the way to fulfilling the

major mission.

For instance, in accomplishing MISSION A some of the sub project goals may be as follows:

SUB PROJECT SE

To have achieved the Senate chamber and support facility restoration desired, all served by effective operating mechanical, electrical and life safety systems needed to properly occupy and use the chambers. This all in accordance with the required support space allocated in the Capitol building space program to accommodate the needs of the Senate.

SUB PROJECT HR

To have achieved the House of Representatives chamber and support facility restoration desired, all served by effective operating mechanical, electrical and life safety systems needed to properly occupy and use the chambers. This all in accordance with the required support space allocated in the Capitol building space program to accommodate the needs of the House of Representatives.

SUB PROJECT SC

To have achieved the Supreme Court hearing room restoration desired and to serve the space with effective operating mechanical, electrical and life safety systems needed to properly occupy and use the room.

1. Prepare projected space allocation program for Capitol building
12. Laundry lists
  1. Mission A

MISSION A.

A major program mission will be achieved when the Capitol Building itself is totally restored within the concepts of work scope outlined in the Preservation Master Plan, part 3, entitled Restoration.

1. Sub program SC (Senate chambers)  
SUB PROJECT SE

To have achieved the Senate chamber and support facility restoration desired, all served by effective operating mechanical, electrical and life safety systems needed to properly occupy and use the chambers. This all in accordance with the required support space allocated in the Capitol building space program to accommodate the needs of the Senate.

1. Prepare master space allocation program for Capitol building
  2. Complete prepare systems study
  3. Select and retain project manager
2. Sub program EO (Executive offices)  
The following division of responsibility for the restoration, design and installation of systems and areas might be applied to the Executive office space, now located on the 3rd floor in the east wing.

1. To be redone!!!!
2. Occupant - Executive staff and their consultants  
Prepare brief (see glossary) needs within space boundaries  
Design FFE  
Select FFE  
Purchase FFE  
Install FFE
3. Base building - Department of Management & Budget  
Select base bldg design team  
Request release of planning funds by JCOS  
JCOS release planning funds  
Execute base bldg design contract with design team  
Prepare base bldg construction documents for occupant and base bldg work  
To be done in accordance with the brief

Submit preliminary const documents to Capitol Committee  
Capitol Committee review and approve preliminary const documents

Submit prelim const documents to JCOS

JCOS review and approve prelim const documents

Solicit base bldg construction proposals for occupant and base bldg work

Award base bldg contracts for occupant and base bldg work

Provide base bldg const inspection services for occupant and base bldg work

Process base bldg changes, pymts, close out for occupant and base bldg work

Install FFE utility services to space boundary

3. Sub program HR (House of Representatives chambers)

The following division of responsibility for the restoration, design and installation of systems and areas might be applied to the House of Representative chambers and offices now located on the ground, 1st, 2nd, 2nd mezz & 3rd fls.

1. Occupant - House of Representatives and staff

01-Prepare occupant space brief (glossary) needs within space boundaries

02-Review & comment on base bldg brief

02-Submit occupant space brief to DMB for information & comment

03-Select FFE design and contractor team

03-Select occupant space design team

03-Select project manager for occupant work

04-Request release of occupant space planning funds by JCOS

05-JCOS release occupancy space planning funds

06-Execute contract with project manager for occupant work

06-Execute FFE design contracts

06-Execute occupant space design contract with design team

07-Prepare prelim occupant space construction documents

To be done in accordance with the brief

08-Design FFE installation

- 08-Submit prelim occupant space const documents to DMB for info & comment
  - 08-Submit preliminary occupant space const documents to Capitol Committee
  - 09-Capitol Committee review and appv prelim occupant space const documents
  - 10-Submit prelim occupant space const documents to JCOS
  - 11-JCOS approve prelim base bldg const documents
  - 12-Prepare & issue final occupant space construction documents
  - 13-Solicit & receive occupant space construction proposals
  - 13-Submit final occupant construction documents to DMB for info
  - 14-Award occupant space construction contracts
  - 15-Execute FFE furnish and install contract
  - 15-Process occupant space changes, pymts, close out
  - 15-Provide occupant space const inspection services
  - 15-Solicit & receive FFE proposals
  - 16-Install FFE
2. Base building - Department of Management & Budget
- 01-Review & comment on occupancy space brief
  - 02-Prepare base bldg brief (see glossary) needs
  - 03-Submit base bldg brief to space occupant for info & comment
  - 03-Select base bldg design team
  - 04-Request release of base building planning funds by JCOS
  - 05-JCOS release base building planning funds
  - 06-Execute base bldg design contract with design team
  - 07-Review & comment on occupant space prelim const documents
  - 07-Prepare prelim base bldg construction documents
    - To be done in accordance with the brief
  - 08-Submit preliminary base bldg const documents to Capitol Committee
  - 09-Capitol Committee review and approve prelim base bldg const documents
  - 10-Submit prelim base bldg const documents to JCOS
  - 11-JCOS approve prelim base bldg const documents

- 12-Review occupant space final construction documents
- 12-Prepare & issue final base building construction documents
- 13-Submit final base building construction documents to occupant
- 13-Solicit & receive base bldg construction proposals
- 14-Award base bldg construction contracts
- 15-Provide base bldg const inspection services
- 15-Process base bldg changes, pymts, close out

**3. 9:07:45 AM 9/8/88 - Session #2**

- 1. Michigan State Capitol Restoration notes for 9/8/88
- 2. By Ralph J. Stephenson PE
- 3. Those at meeting
  - 1. Larry Bennett - Acting Director - Office of Facilities
  - 2. Eduard Markwart - Director of Design - Office of Facilities
  - 3. Ralph J. Stephenson PE - Consultant
- 4. Agenda
  - 1. Redefine mission A in greater detail
    - 1. Scope of work - internal and external
    - 2. Geographic boundaries of the missions, particularly A
    - 3. Core actions
      - Those actions within the Capitol Restoration program that must be done irrespective of alternatives leading to and coming from the action.
  - 2. Define preliminary financing boundaries and possible methods
  - 3. Define possible planning scope of work
  - 4. Identify graphic techniques for presenting mscr development to sso
  - 5. Review consolidation of mscr planning efforts currently in work
    - 1. How organized?
    - 2. Scope of work?
    - 3. Responsibilities?
    - 4. Authority?
    - 5. Current status of work?
- 5. Scope of dmb planning work is currently authorized as noted below
  - 1. Planning definition - in context of dmb internal authorizations
    - Developmental work done prior to start of detailed design and primarily for early approvals of the nature & scope of work.
  - 2. Projects authorized as of October 1, 1987 (pa 134)

1. Capitol building restoration/alternative space studies
  1. Alternative studies being done by hepy
  2. Signage & directory for Capitol Building
    1. Yet to be awarded
  3. Dome repair
    1. Design to be done by hepy
  4. Computerized maintenance program
    1. Being reviewed presently by dmb
3. Projects authorized as of August 3, 1988 (pa 289)
  1. Capitol restoration - phase 1

Phase 1 work referred to below is defined in Capitol Committee's recommendations letter to the jcos dated June 14, 1988. The intent of the document is taken to cover work on the Capitol Building proper.

    1. Funding

Being funded by the State Building Authority and the general fund in the amount of \$7.7 million.
    2. Scope of work
      - Senate & house chambers
      - Interior dome & rotunda
      - Capitol building and related infrastructure
        - Mechanical, electrical, architectural and structural components of the historical renovation program that are located outside the boundary of an occupant space. These spaces are currently being called neutral spaces and are general considered public or common areas.

Where the infrastructure has a specific location it will be designated. For example Capitol building infrastructures. Such designations give the infrastructure the same boundaries as the specific location description.
4. Projects authorized as of October 1, 1988 (pa 300)
  1. Capitol restoration - phase 2

Phase 2 work referred to below is yet to be fully defined within the financial constraints established. The intent of Phase 2 work is taken to cover work on the Capitol building



proper.

1. Funding

Phase 2 is being funded by the State Building Authority and the general fund in the amount of \$37.3 million.

2. Scope of work

Balance of Capitol interior and exterior bldg restoration not in Phase 1

6. Extended definition of missions

1. Mission A

Mission A will be achieved when the Capitol building proper is totally restored within the concept of work scope outlined in the Preservation Master Plan (pmm), Section 3, entitled Restoration. The start of Mission A creates an initial push that in turn sets off a domino effect or chain of related events upon which the total achievement of Mission A depends. Other accomplishments in Mission A will occur as the total chain is revealed.

Another analogy that can be used is to compare each of the mission programs and projects to balls of yarn being progressively unwound.

Early planning efforts for Mission A are to be concentrated on finding the resisting dominos, or the snarls in the ball of yarn, outside the Capitol building restoration proper, that will not fall easily into the event chain until a part of another mission is accomplished.

An element of the total restoration effort may belong to one, two, three or all (additional missions will be added as needed), of the missions as defined, but it does have to belong to at least one to be considered a part of the total program. This definition is essential so as to keep implementation headed toward effective accomplishment of the three or more missions with which the mcc is charged

1. Scope of work for Mission A - Capitol Building proper

Note: Stages are designated first by the letter identification of the mission or missions to which they are directed. The second letter is assigned as the stages are identified, and by

assigning the letters of the alphabet in reverse order. This is to help eliminate any implied priorities or sequencing of the stages.

1. Stage A/Z - Preparation & submittal of hepy's master space study (mss)

Stage 1 is considered a core action (cac)

Make inventory of existing Capitol space use & characteristics

Make inventory of available space and characteristics within influence area

Prepare space brief for Capitol proper when Mission A is achieved

Outline desired & required environmental conditions

Determine what the ultimate space allocation of the Capitol proper is to be

Determine the functions to be housed

Determine the population to be housed

Determine the infrastructure spaces to be allocated

Identify the needs of the occupants

Identify the desires of the occupants

Prepare space brief for Capitol proper for intermediate stages of Mission A

[ Determine intermediate space allocations needed  
Determine intermediate functions to be housed  
Determine intermediate population to be housed  
Determine intermediate infrastructure needs ]

Prepare suggested time table for achievement of relocation stages

Prepare estimated cost analysis for all relocation stages

The dmb will have prepared estimates of the following costs during Stage AX

Relocation costs

Lease costs

Temporary parking costs

Fixtures, furnishings and equipment costs

New construction costs

Design fees

Projected land costs - if any

Other fees than design

Prepare space analysis of Capitol proper to the year 2000  
Prepare & submit final report on alternative space  
recommendations to mcc

2. Stage A/Y - Prepare & submit Capitol Building infrastructure  
plan (cbip)

(Would be desirable to use same consultant as for Capitol  
Complex iss)

mcc/dmb select consultant to prepare Capitol Building  
infrastructure plan

jocs provide Capitol Building infrastructure planning  
authorization

Consultant prepare and submit prelim Capitol Building  
infrastructure plan

mcc/dmb jointly submit prelim Capitol Buiding  
infrastructure plan to jocs

jocs review and approve prelim Capitol Building  
infrastructure plan

Prepare and submit cost estimate and budget for work to be  
done in cbip

3. Stage A/X - Prepare construction documents for Senate  
occupancy

Restore and relocate

4. Stage A/W - Prepare construction documents for House  
occupancy

5. Stage A/V - Prepare const documents for:

Capitol Building infrastructure work

Capitol Complex infrastructure work related to Mission A

2. Mission B

Mission B is achieved when the Capitol Complex and the Capitol  
Ground has been designated as a State park, and has achieved the  
physical status of a State park, as proposed by the  
Revitalization Committee.

3. Mission C

Mission C is achieved when the mechanical, electrical,  
architectural and structural infrastructure work is complete for  
the public and common space facilities within the Capitol  
Complex. Facilities include streets, signing, lighting, structures,

*mm* *mm*

and monuments, all outside the Capitol Building.

1. Scope of work for Mission C - Capitol Complex

1. Stage C/Z - Prepare & submit Capitol Complex infrastructure plan (ccip)

(Would be desirable to use same consultant as for cbip)  
mcc/dmb select consultant to prepare Capitol Complex infrastructure plan

jocs provide Capitol Complex infrastructure planning authorization

Consultant prepare and submit prelim Capitol Complex infrastructure plan

mcc/dmb jointly submit prelim Capitol Complex infrastructure plan to jocs

jocs review and approve prelim Capitol Complex infrastructure plan

Prepare and submit cost estimate and budget for work to be done in ccip

4. Stages with multiple missions

Stages described below extend across mission boundaries and have been given initial letter identifiers for all missions to which they contribute.

1. Stage AC/Z - Acceptance and action on hepy's master space study (mss) + *cbip + ccip*

1. mcc review and accept the mss, cbip and the ccip

mss - Master space study - by hepy

cbip - Capitol Building infrastructure plan - consultant to be selected

ccip - Capitol Complex infrastructure plan - consultant to be selected

2. mcc merge various stage plans as desired and required into Stage AC/X

For instance it appears that it may be desirable to merge the Master Space Study, the Capitol Building infrastructure plan, and portions of the Capitol Complex infrastructure plan at this point in the program.

3. mcc/dmb recommend acceptance of merged mss, cbip and ccip stage to jocs

4. Legislature leadership accept merged mss, cbip & ccip stage

*AC/X ?*

5. Legislature approve implementation of merged mss, cbip & ccip stage work
6. Legislature appropriate funds for Stage AC/Z final plans & start of const
7. Assumptions for initial work on planning total Capitol Restoration Program
  1. 01. The Preservation Master Plan, section 3 is to be used as the guideline
  2. 02. hepy will use pmp, sect 3 as their base from which to prepare the mss
  3. 03. ofa will provide hepy a statement of the missions and the stages
  4. 04. hepy will prepare a space brief for all missions and all stages
  5. 05. The rfp 1 block restriction on the mstr space study will be moderated
    1. See rfp - 1 - 1 ... Purpose
    2. Consider that intermediate moves might require greater relocation distance
  6. 06. The hepy mss time table can be extended if required
  7. 07. The mstr spc stdy (mss) will be presented to the Mich Capitol Committee
  8. 08. The hepy mss will be accepted in principal
  9. 09. The infrastructure work will be generally be considered core actions
  10. 10. The prog admin stff will set the assumptions needed in early planning
  11. 11. Capitol building areas defined as occupant & neutral spaces include
    1. Senate occupancy space - those areas used by the Senate in their work
      1. Chambers \*
      2. Offices
      3. Conference rooms
      4. Toilets
      5. Post office
      6. Print shop
      7. Journal distribution
      8. Storage areas
      9. Visitor's gallery \*
    2. House occupancy space - thos areas used by the House in their work

1. Chambers
2. Offices
3. Conference rooms
4. Toilets
5. Post office
6. Print shop
7. Journal distribution
8. Storage areas
9. Visitor's gallery
10. External based trailers for Appropriations
11. Annex
3. Executive office occupancy space
  1. Conference rooms
  2. Offices
  3. Toilet rooms
4. Supreme Court occupancy space (to be defined?)
5. Neutral spaces - dmb
  1. Public corridors
  2. Rotunda
  3. Sub basement
  4. Under-stair space
  5. Old boiler room
  6. Interior stairs
  7. Exterior stairs
  8. Elevators
  9. Elevator machine rooms
  10. Mechanical and electrical equipment rooms
  11. Public toilets
  12. Building manager's office
  13. Attic spaces
  14. Above ceiling spaces
  15. Monuments
8. General comments
  1. Presentation of early planning matl to sso at sessn #3 or #4 should include
    1. Outline of assumptions made and to be used in the implementation process
    2. Identification of stages into which each mission is divided

*Now  
Save Space*

3. Identification of programs that are a part of each stage
4. Identification of projects that are a part of each program
5. Laundry list of action steps to be taken for each project being considered
6. Outline of implementation plan to achieve the 3 main current missions
  1. To determine cost framework
  2. To determine time framework
  3. To determine staffing framework
  4. To show domino or yarn effects and resolutions
7. Identify relationships of key elements of missions A, B & C
8. Suggest recommendations to be presented to the Michigan Capitol Committee
9. Provide preliminary suggested organization structure for entire mscr effort

- 1: Michigan State Capitol Restoration notes for 9/8/88
- 2: By Ralph J. Stephenson PE
- 3: Those at meeting
- 3.1: Eduard Markwart - Director of Design - Office of Facilities
- 3.2: Larry Bennett - Acting Director - Office of Facilities
- 3.3: Ralph J. Stephenson PE - Consultant
- 4: Agenda
- 4.1: •Redefine mission & in greater detail
- 4.1.1: Scope of work - internal and external
- 4.1.2: Geographic boundaries of the missions, particularly A
- 4.2: •Define preliminary financing boundaries & possible methods
- 4.3: •Define possible planning scope of work
- 4.4: •Define preliminary set of assumptions for total MSCR development
- 4.5: •Identify graphic techniques for presenting early procedural work to SSO
- 4.6: •Review consolidation of mscr planning efforts currently in work
- 4.6.1: How organized?
- 4.6.2: Scope of work?
- 4.6.3: Responsibilities?
- 4.6.4: Authority?
- 4.6.5: Current status of work?
- 5: Scope of DMB planning work is currently authorized as noted below
- 5.1: •Planning definition - in context of DMB internal authorizations  
Developmental work done prior to start of detailed design & primarily for early approvals of the nature & scope of work
- 5.2: •Projects authorized as of October 1, 1987 for fy 87/88
- 5.2.1: Capitol building restoration/alternative legislative offices
- 5.2.2: Capitol Committee/DMB contract for alternative space studies  
Alternative studies being done by HEPY
- 5.2.3: Signage & directory for Capitol Building  
To be awarded
- 5.2.4: Dome repair  
To be done by HEPY
- 5.2.5: Computerized maintenance program  
Being reviewed presently by DMB



5.3: • **Projects authorized as of October 1, 1988 for fy 88/89**

5.3.1: Capitol restoration - phase 1 & 2

The phases referred to below are defined in Capitol Committee's recommendations letter to the JCOS dated June 14, 1988. The intent of the document is taken to cover work on the Capitol building proper.

Phase 1 - program of fy 87/88 restoration work

Phase 1 is being funded by the State Building Authority and the general fund in the amount of \$7.7 million.

Senate & house chambers

Interior dome & rotunda

Infrastructure

Mechanical, electrical and structural components of the historical renovation program.

East/west ground floor corridors

Phase 2 - program of fy 88/89 restoration work

Phase 2 is being funded by the State Building Authority and the general fund in the amount of \$37.3 million.

Balance of Capitol interior & exterior building restoration

**6: General comments**

6.1: • **Presentation to sso should**

- 6.1.1: Outline assumptions to be made in the implementation plan
- 6.1.2: Identify projects to be undertaken in each mission
- 6.1.3: List the essential steps to be taken to implement the mscc  
Particularly as they impact on the senate & house
- 6.1.4: Outline the plan of implementation to achieve the 3 missions  
Cost framework  
Time framework  
Staffing framework  
Domino effects and resolutions
- 6.1.5: Graphically show relationship of key elements of total restoratio effort  
Mission A work  
Mission B work  
Mission C work
- 6.1.6: Suggest recommendations to be presented to the Capitol Committee

Organization of mscr effort