

BRIDGE S-10

Bridge S10

**NETWORK MODEL FOR I-75
WORK FROM JOSLYN TO M-15
MDOT # IR 75-2(346)81
AJAX # 4165
OAKLAND COUNTY, MICHIGAN**

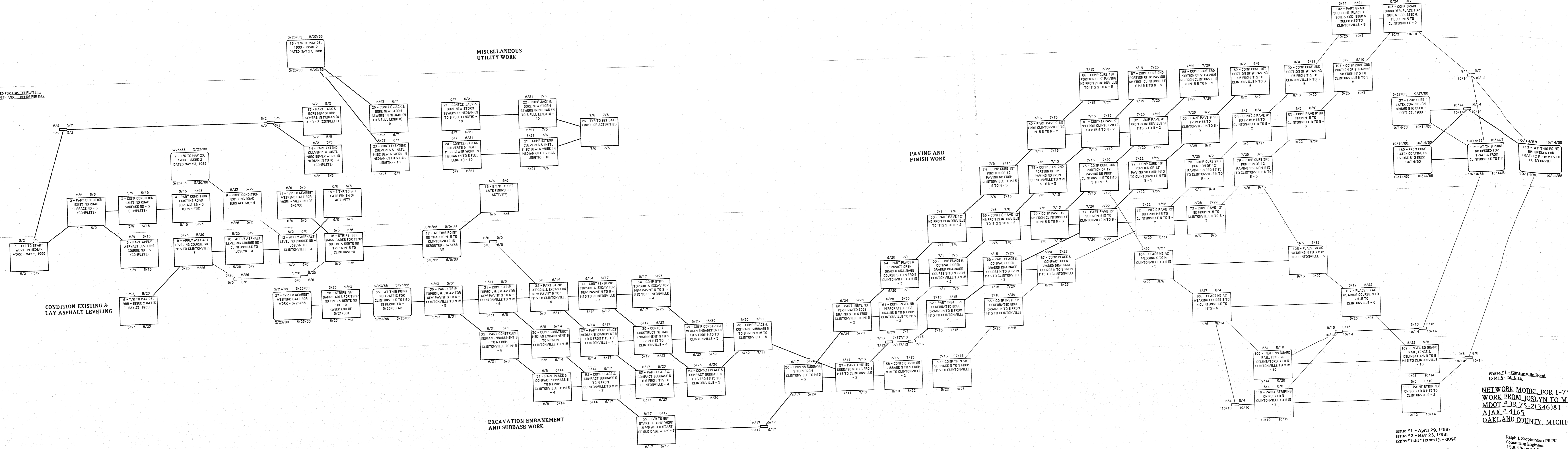
Issue #1 - May 31, 1988
i1sht*s3structjosm15 - disk 93

RESERVED ACTIVITY NUMBER

291	296
292	297
293	298
294	299
295	300
	LN 253
	HN 302

Ralph J. Stephenson PE PC
Consulting Engineer
15064 Warwick Road
Detroit, Michigan 48223
ph 313 273 5026

NOTE: CALENDAR USED FOR THIS TEMPLATE IS 5 WORK DAYS PER WEEK AND 11 HOURS PER DAY 7:00 AM - 6:00 PM



Phase 1 - Clintonville Road to M15 - Nb & Sb
NETWORK MODEL FOR I-75 WORK FROM JOSLYN TO M-15
 MDOT # IR 75-2(346)81
 AJAX # 4165
 OAKLAND COUNTY, MICHIGAN

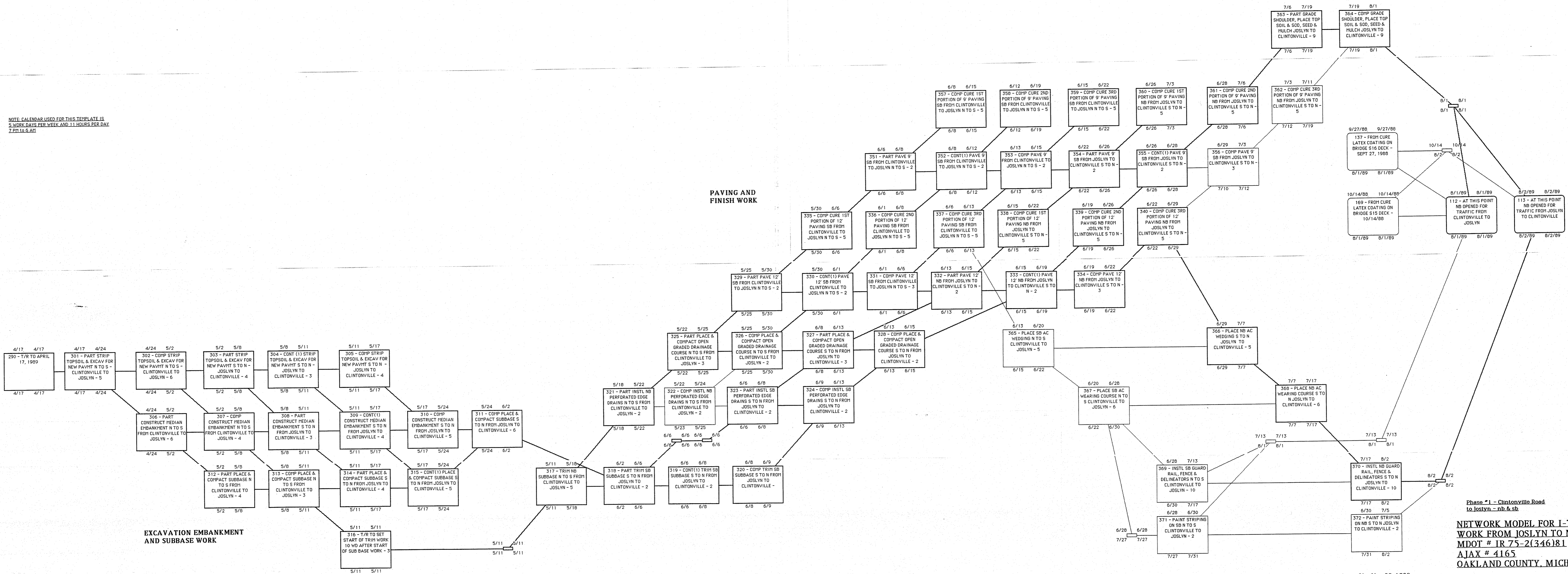
Issue #1 - April 29, 1988
 Issue #2 - May 23, 1988
 12phs*1sht*1ctm15 - d090

RESERVED ACTIVITY NUMBERS

41	46	91	96
42	47	92	97
43	48	93	98
44	49	94	99
45	50	95	100

Ralph J. Stephenson PE PC
 Consulting Engineer
 15064 Warwick Road
 Detroit, Michigan 48223
 ph 313 273 5026

NOTE: CALENDAR USED FOR THIS TEMPLATE IS
 5 WORK DAYS PER WEEK AND 11 HOURS PER DAY
 7 PM TO 6 AM



Phase #1 - Clintonville Road
 to Joslyn - nb & sb

**NETWORK MODEL FOR I-75
 WORK FROM JOSLYN TO M-15
 MDT # IR 75-2(346)81
 AJAX # 4165
 OAKLAND COUNTY, MICHIGAN**

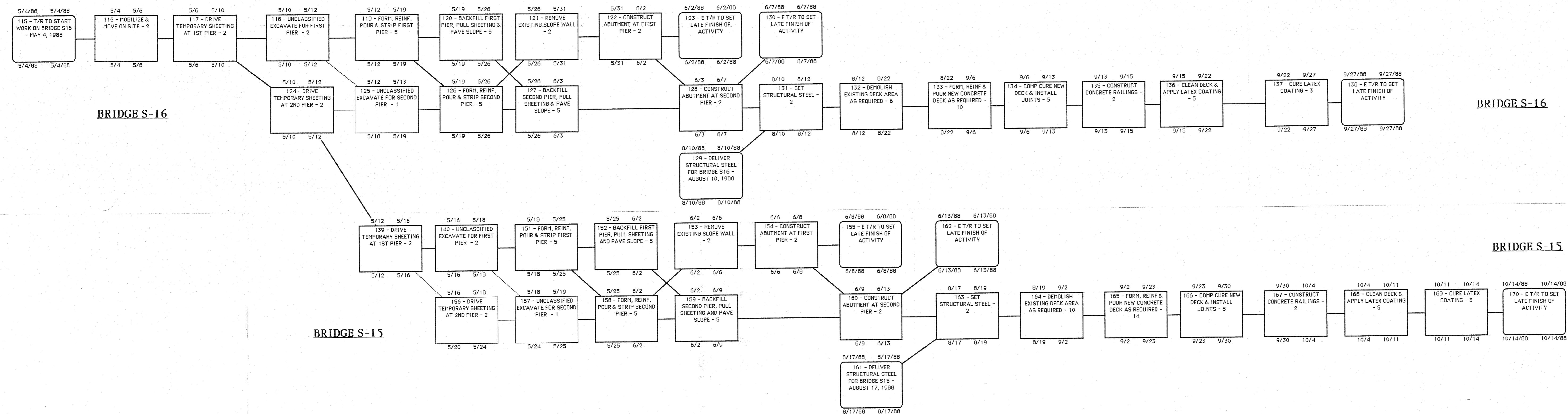
Issue #1 - May 23, 1988
 11phs*2sht*2ctoJos - d090

RESERVED ACTIVITY NUMBERS

291	296	341	346
292	297	342	347
293	298	343	348
294	299	344	349
295	300	345	350

LN 290
 HN 374

Ralph J. Stephenson PE PC
 Consulting Engineer
 15064 Warwick Road
 Detroit, Michigan 48223
 ph 313 273 5026



Issue #1 - April 29, 1988
i:\structures\joshm15 - disk 93

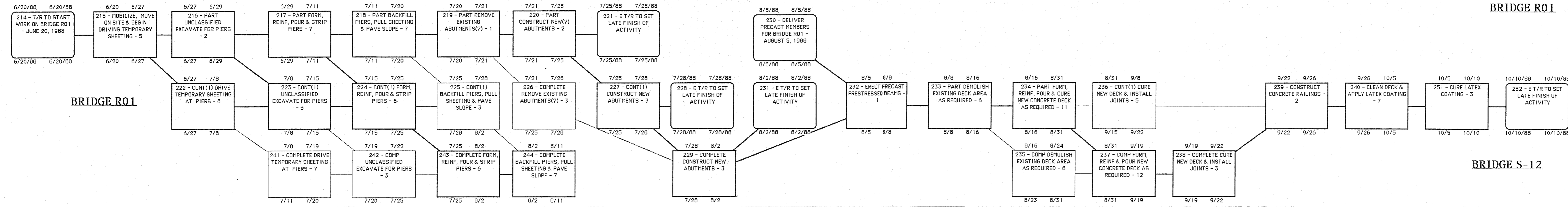
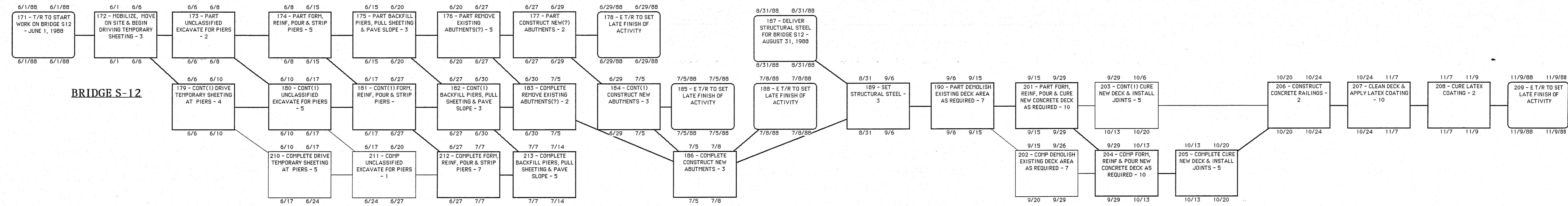
RESERVED ACTIVITY NUMBERS

141	146
142	147
143	148
144	149
145	150

LN 115
HN 170

Bridges S16 & S15
NETWORK MODEL FOR I-75
WORK FROM JOSLYN TO M-15
MDOT # IR 75-2(346)81
AJAX # 4165
OAKLAND COUNTY, MICHIGAN

Ralph J. Stephenson PE PC
Consulting Engineer
15064 Warwick Road
Detroit, Michigan 48223
ph 313 273 5026



BRIDGE S-12

BRIDGE R01

BRIDGE S-12

Issue #1 - May 30, 1988
i:\sht*s2struct\josh15 - disk 93

RESERVED ACTIVITY NUMBERS

191	196	241	246
192	197	242	247
193	198	243	248
194	199	244	249
195	200	245	250

Bridges S12 & R01

NETWORK MODEL FOR I-75
WORK FROM JOSLYN TO M-15
MDOT # IR 75-2(346)81
AJAX # 4165
OAKLAND COUNTY, MICHIGAN

Ralph J. Stephenson PE PC
Consulting Engineer
15064 Warwick Road
Detroit, Michigan 48223
ph 313 273 5026

LN 171
HN 252

SHEET #S2