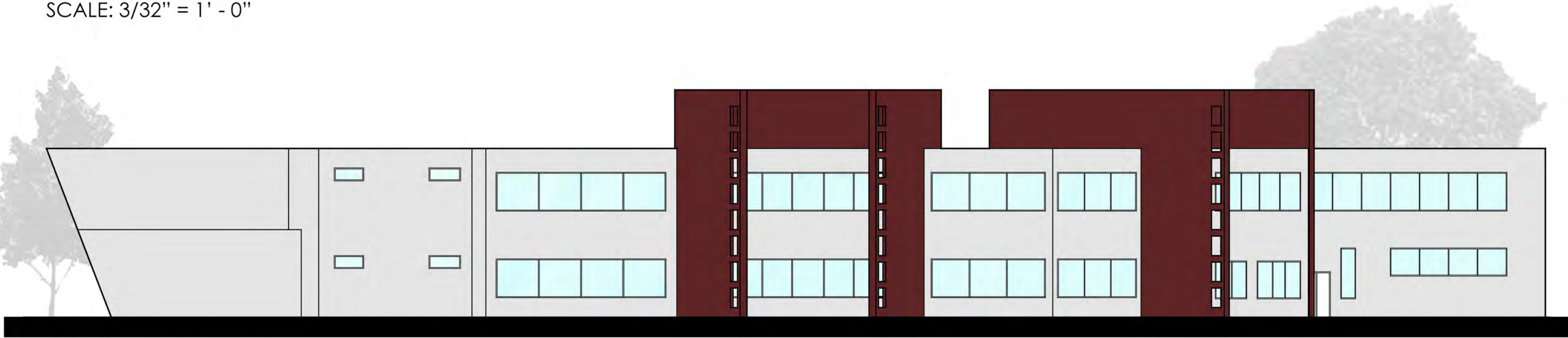


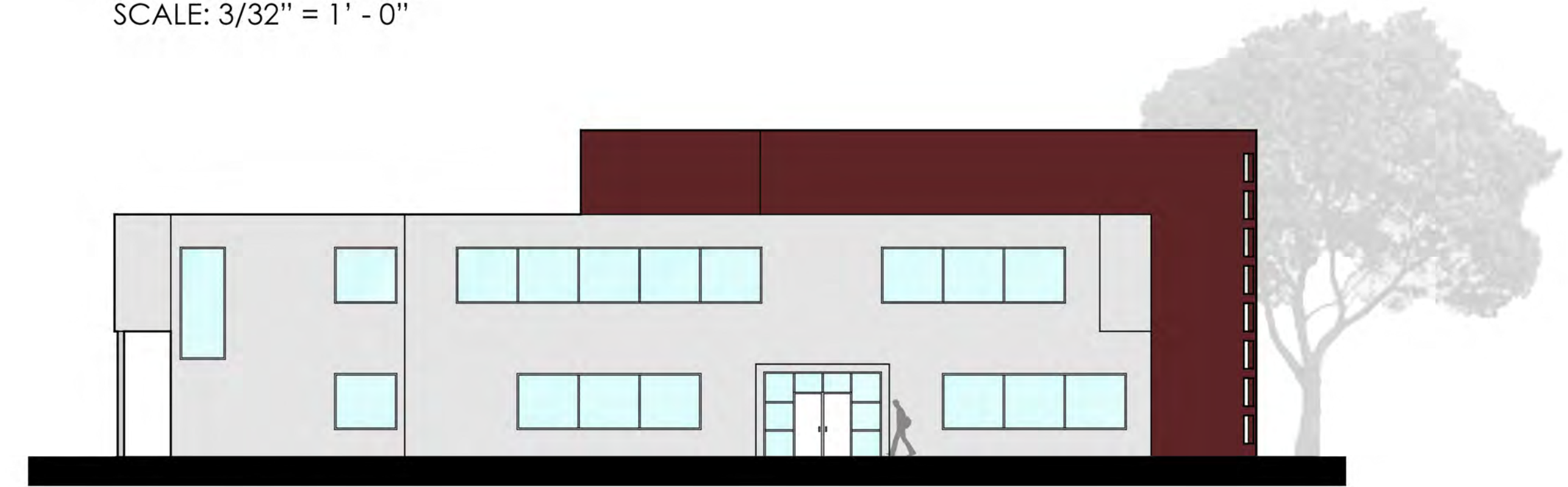
NORTH ELEVATION
SCALE: 3/32" = 1' - 0"



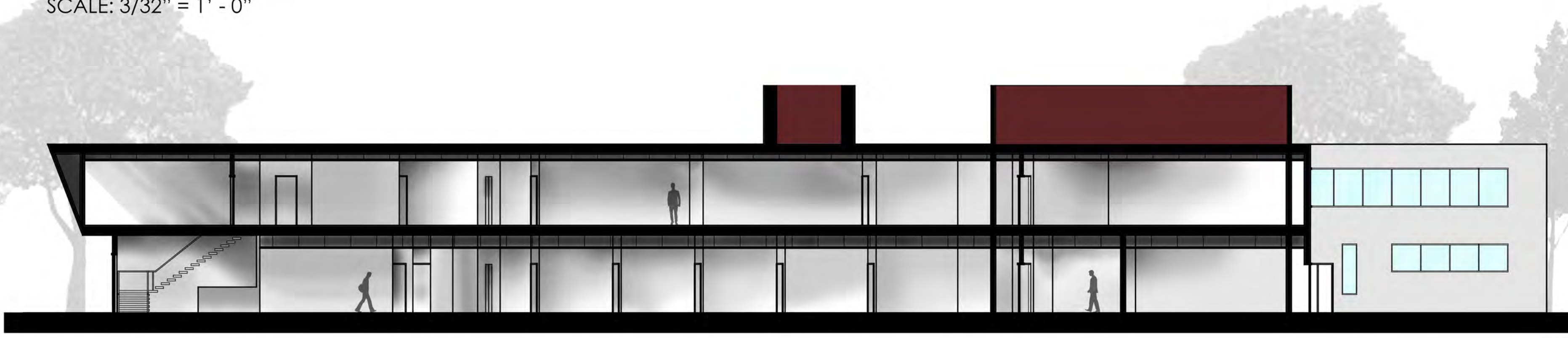
EAST ELEVATION
SCALE: 3/32" = 1' - 0"



SOUTH ELEVATION
SCALE: 3/32" = 1' - 0"



WEST ELEVATION
SCALE: 3/32" = 1' - 0"



SECTION
SCALE: 3/32" = 1' - 0"

