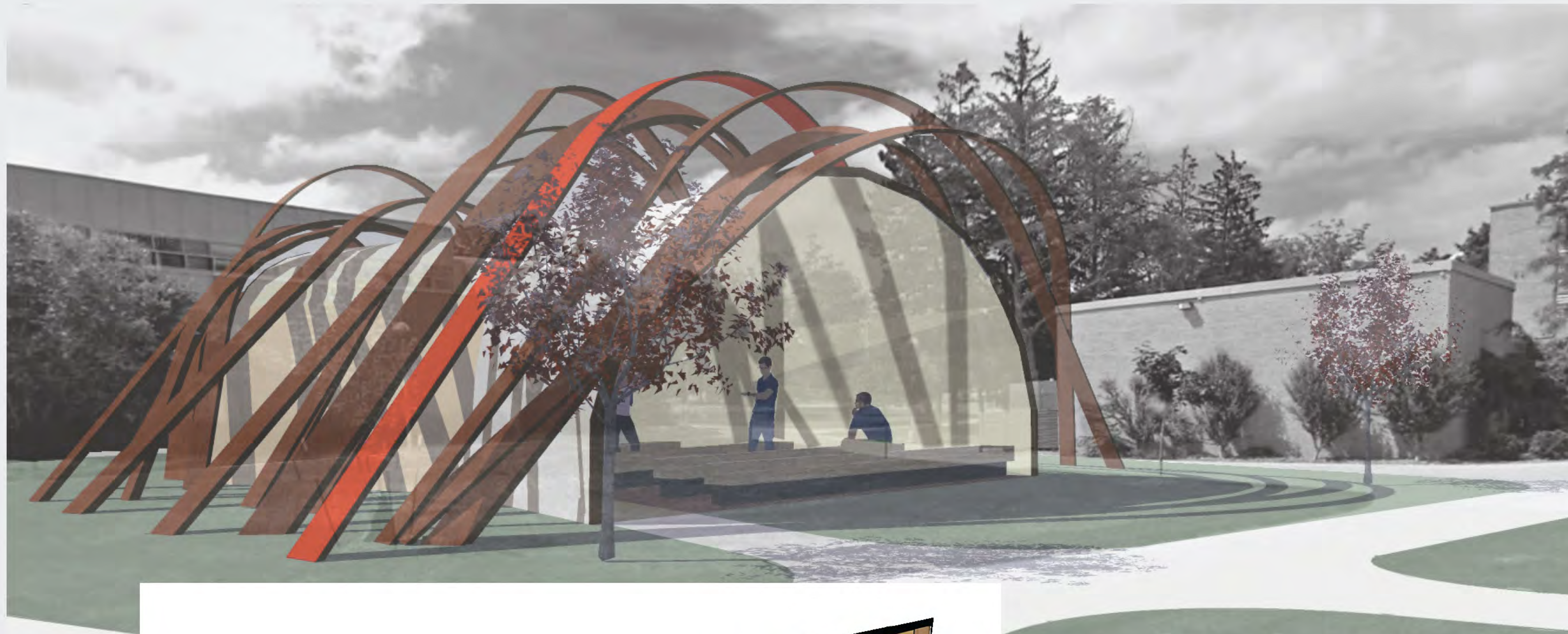
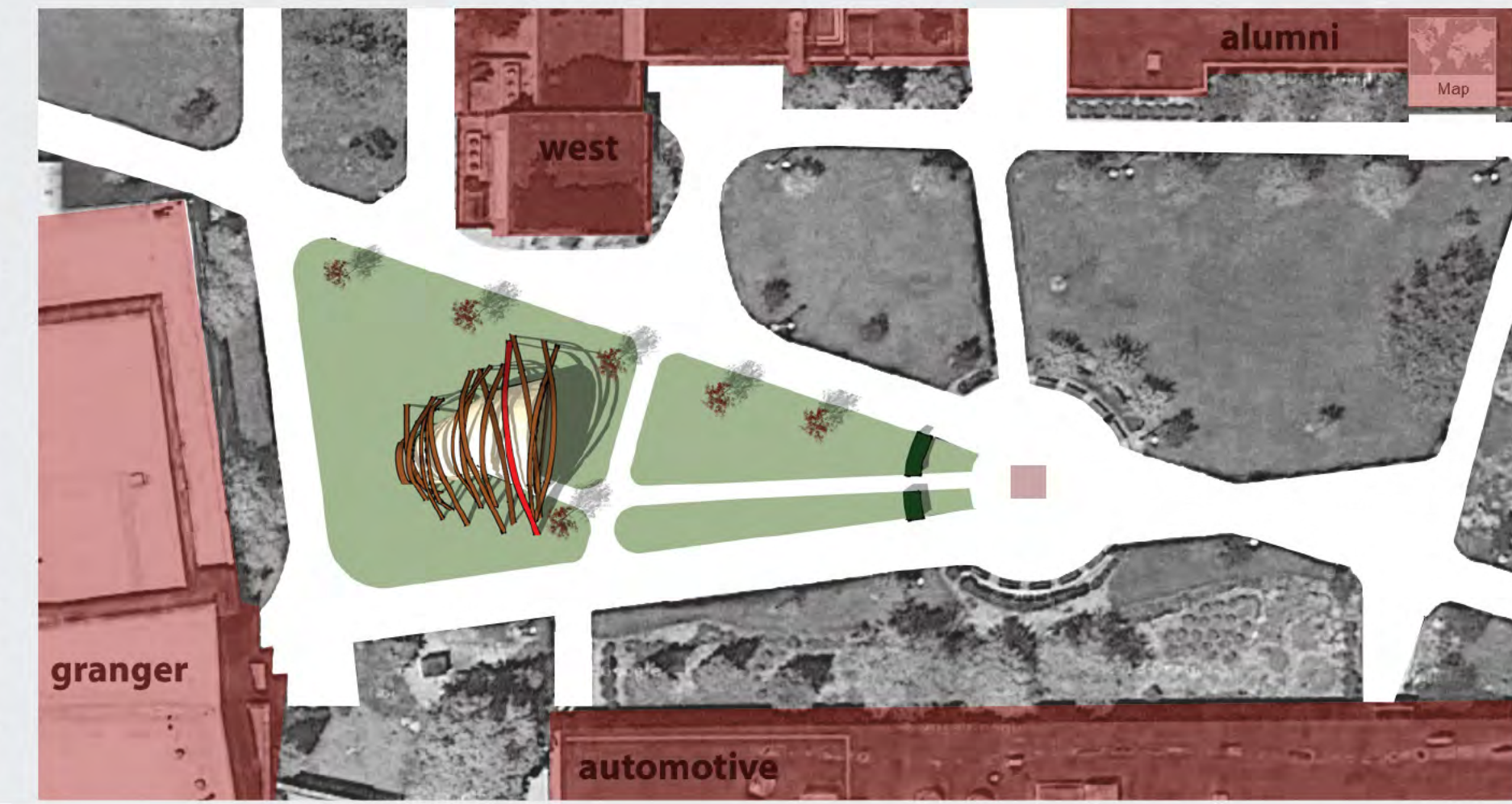


# enlightenment outdoor classroom

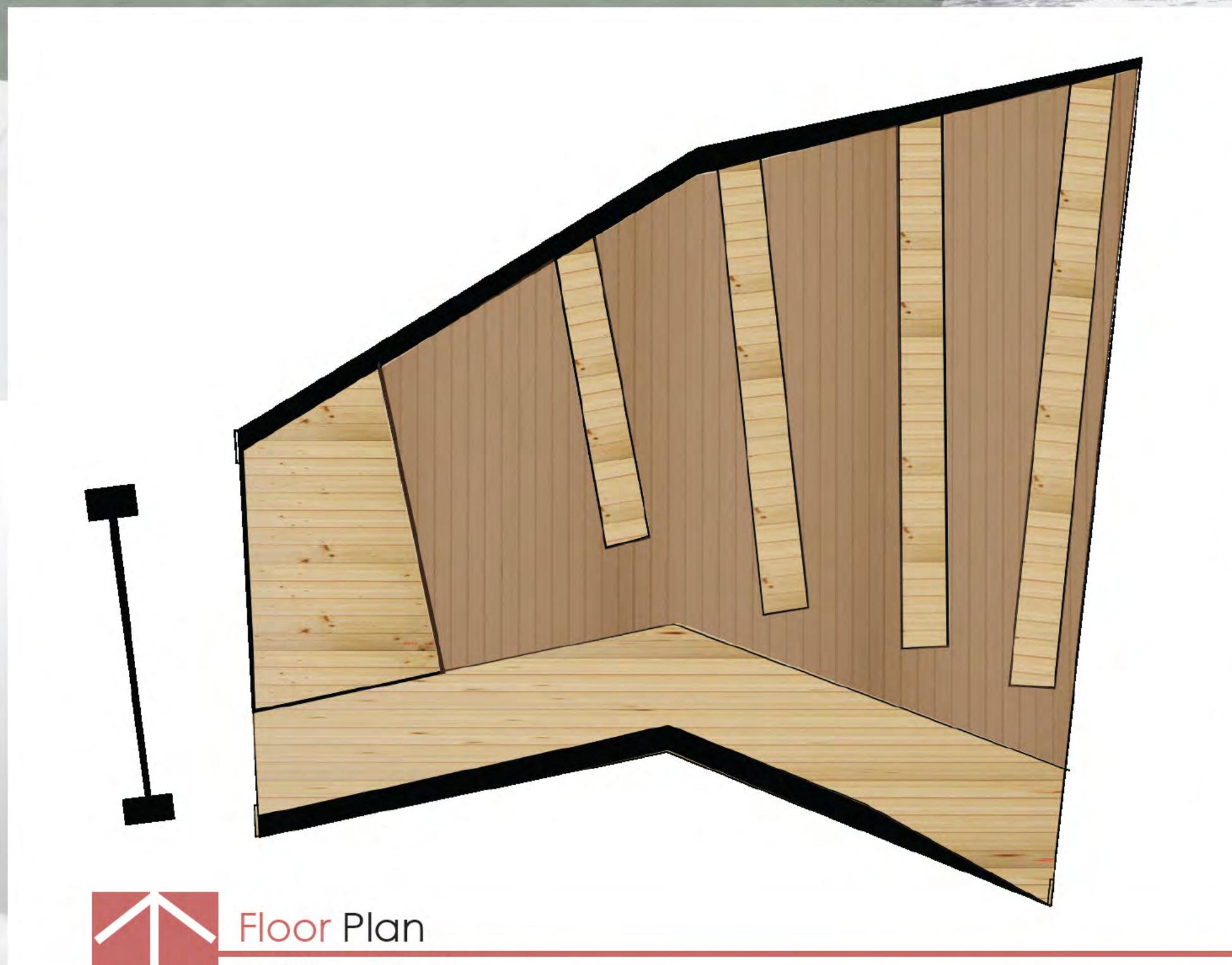
ARCH 341 Architectural Design 1  
Ferris State University  
Fall 2013 - Professor D. Nagelkirk  
Michelle Lynn Edwards



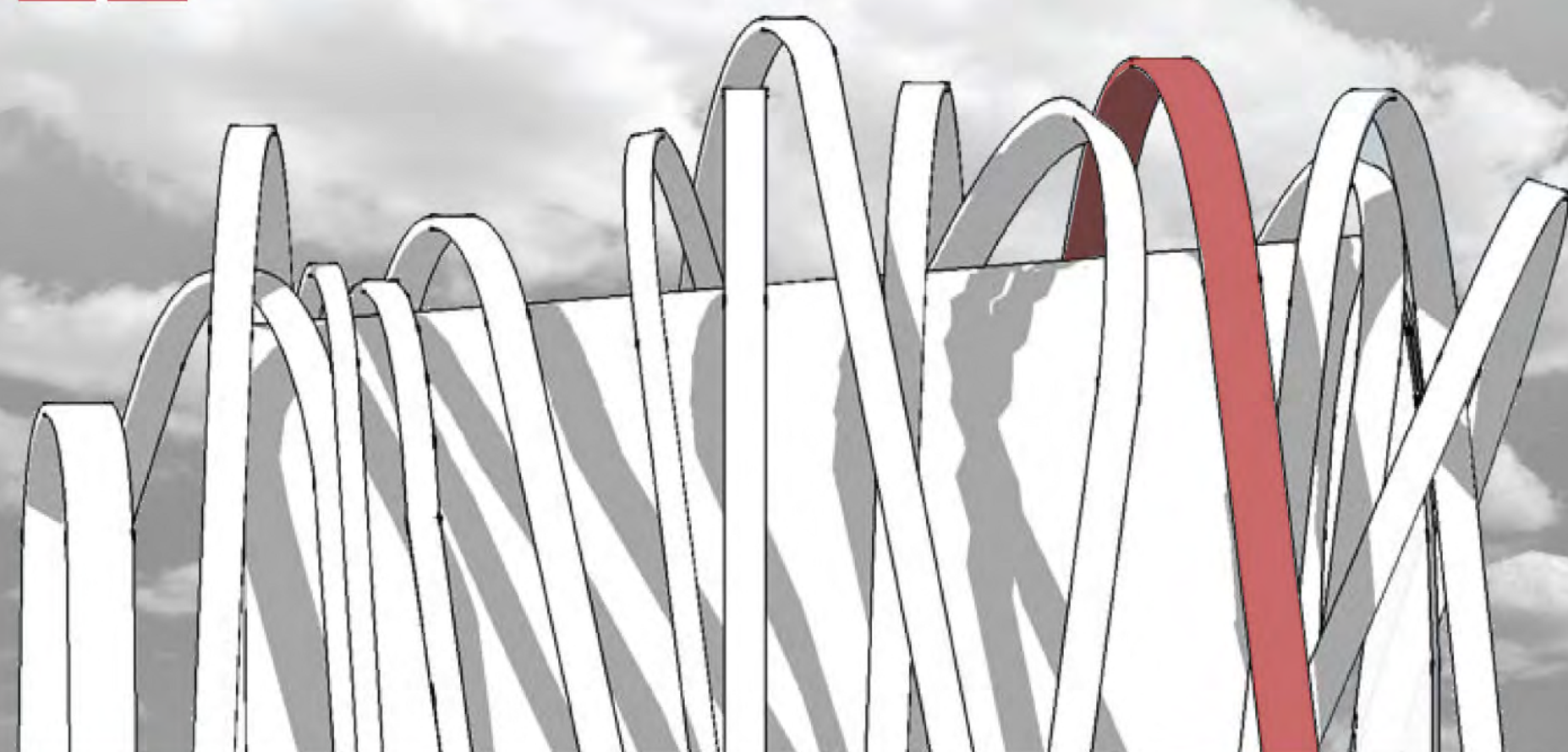
The driving force behind the design of this outdoor classroom was the concept of enlightenment. Which in essence can be demonstrated through the use of light and the ways that it can be manipulated to achieve the desired effect. To play with the experience of the user, the inner tunnel is made of a translucent material that allows the shadows cast from the above wood arches to be displayed upon its surface inside and out. The single red piece of the structure was chosen to tie in with the red sculpture at the center of the quad, and as a symbol to students that it is okay and encouraged to stand out. Sustainability was of concern in the design, and wood from a sustainably managed forest would be accessed as well as the natural daylighting and ventilation with which the simple structure provides. Also, it is oriented on the site for the maximum sun path exposure to create patterns on the surface of the inner tunnel.



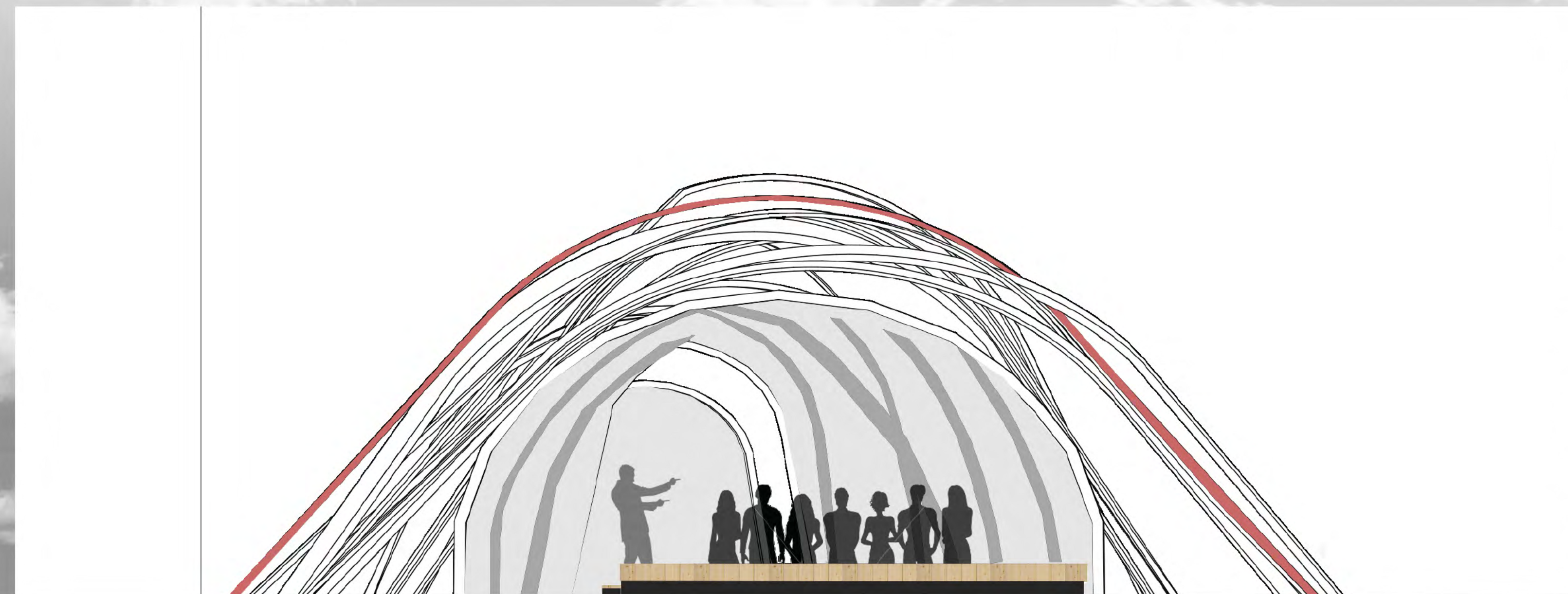
Site Plan  
1" = 40'-0"



Floor Plan  
1/4" = 1'-0"



North Elevation  
1/4" = 1'-0"



East Elevation  
1/4" = 1'-0"

