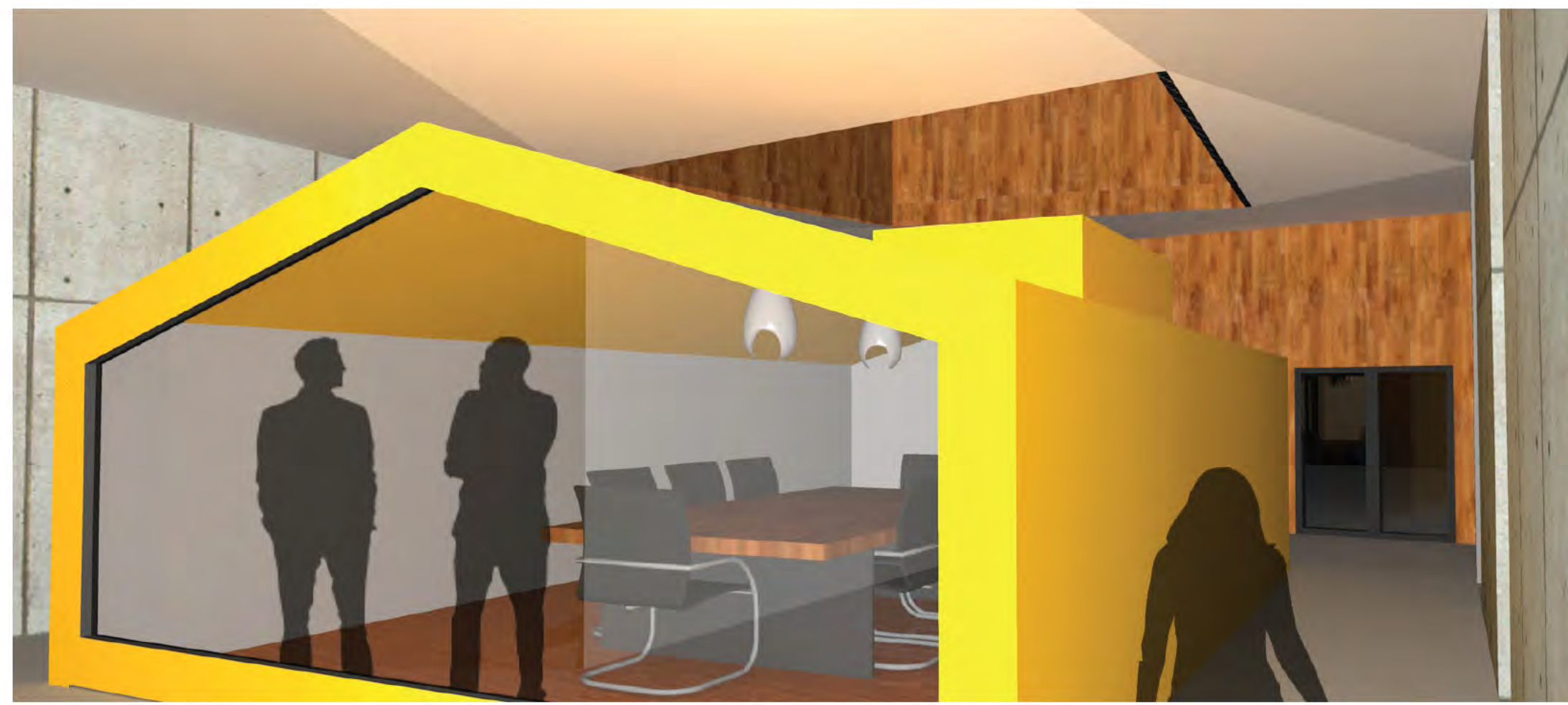


- GALLERY 01
- LECTURE/CRIT 02
- DIGITAL STUDIO 03
- LECTURE A 04
- RESEARCH LAB 05
- LECTURE B 06
- CONFERENCE 07
- DEPT OFFICE 08
- PROG COORD OFFICE 09
- JANITOR 10
- MECHANICAL 11
- COPY 12
- FACULTY LOUNGE 13
- RECEIVING 14
- FACULTY OFFICES 15

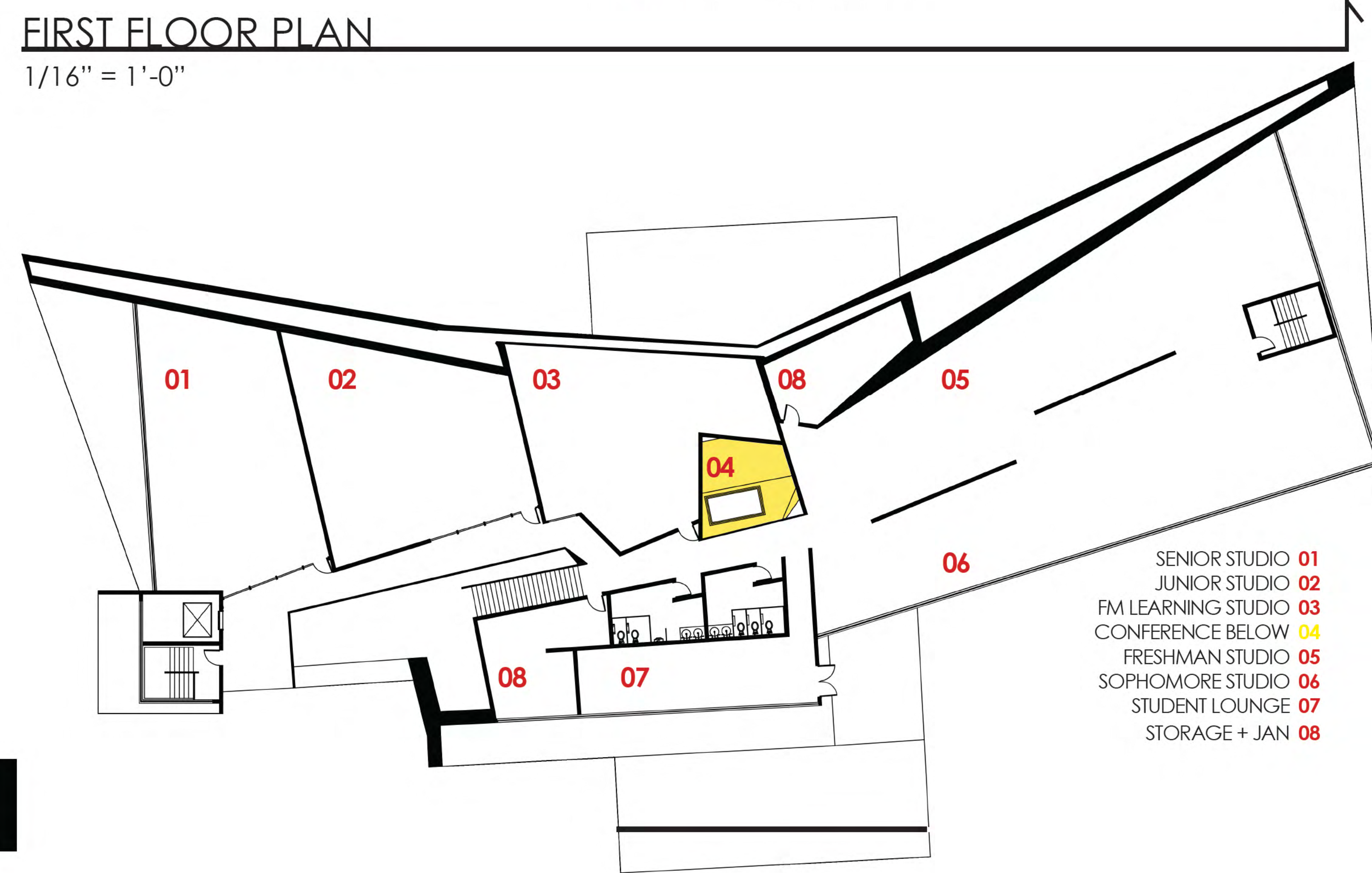
FIRST FLOOR PLAN

1/16" = 1'-0"

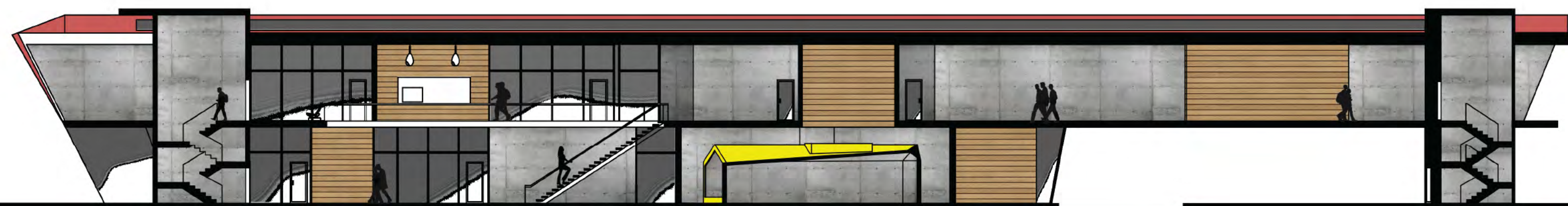


Environmental Goals:

- 01 BIPV solar glass to spells out FSU and ATFM south sidez
- 02 Solar panels on mechanical core roof
- 03 Green roof on part of roof for access from student lounge
- 04 Minimize footprint on site
- 05 Use permeable materials for walkways, add vegetation
- 06 Allowed open space under cantilever for student recreational purposes
- 07 Clerestory windows with light shelf, provides ambient natural light
- 08 Utilize thermal mass to store solar energy to heat building through concrete



- SENIOR STUDIO 01
- JUNIOR STUDIO 02
- FM LEARNING STUDIO 03
- CONFERENCE BELOW 04
- FRESHMAN STUDIO 05
- SOPHOMORE STUDIO 06
- STUDENT LOUNGE 07
- STORAGE + JAN 08



SOUTH SECTION

1/16" = 1'-0"