

lowe family residence

joenodge

arche85





albuquerque, nm

use of brick (made from mud)
use of mud (easily molded with water)

thick walls (keep out heat/ protection)
often flat roofs (not collecting rain)
multiple units (protect from sun / shade)

small windows (keep out heat)
openings in roofs (ventilate hot air out)
some use of wood / branches / plants (light material for roofs)

vernacular principals

<http://www.nahbmonday.com/consumer/issues/2007-03-20/11.html>

<https://www.google.com/search?q=new+mexico+backyard&source>





allow for good
backyard views

position house for
summer/ winter
breezes

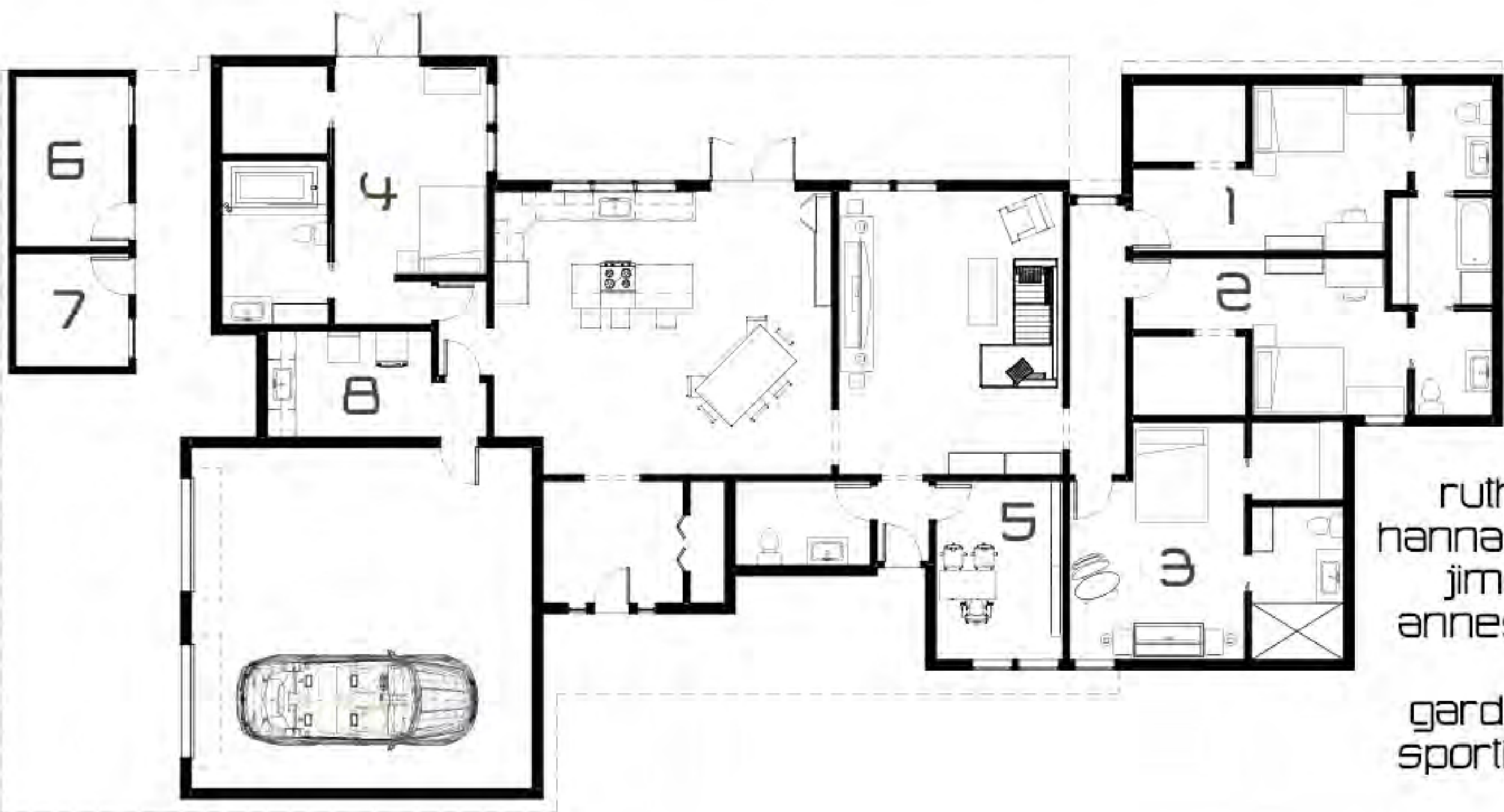
reduce noise from
neighbors

trees:

- 1- bur oak- tall, allow for breeze to pass through
- a- quaking aspen- tall, low branches, hide neighbors, golden in color

site plan





- ruths bedroom (1)
- hannas bedroom (2)
- jims bedroom (3)
- annes bedroom (4)
- jims office (5)
- garden storage (6)
- sporting storage (7)
- laundry (8)

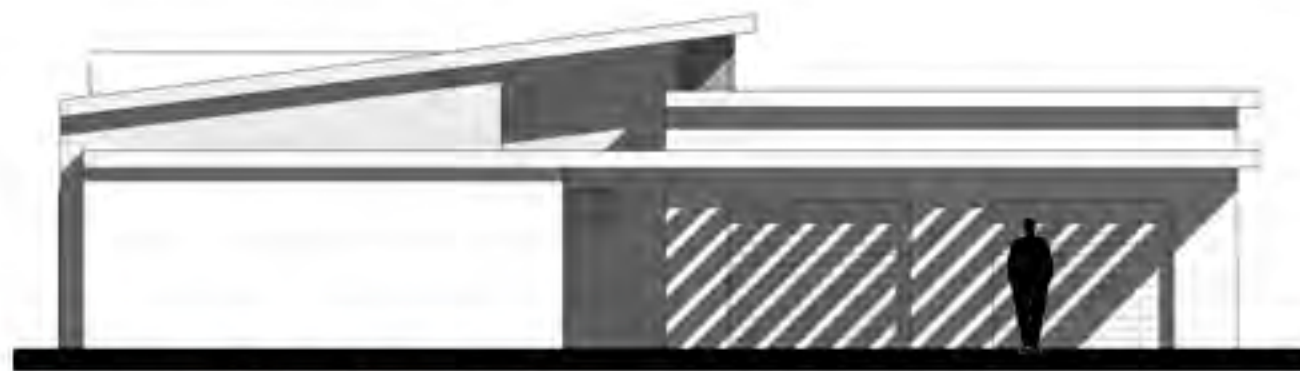
floor plan



anns bedroom: 160sf room, 50sf closet
hannas bedroom: 120sf room, 50sf closet
ruths bedroom: 120sf room, 50sf closet
jims bedroom: 12x12 (144sf) + 60sf closet
main entrance: 100sf
family room: 300sf
dining room: 168sf
Kitchen: 252sf
porch: --
terrace/ deck: --
bathroom: 60sf
laundry: 100sf
rear entry: --
garage: 24x24 (576sf) + 8x12 garden storage + 8x8 sport storage
jims bathroom: 80sf
anns bathroom: 100sf
girls bathroom: 100sf
total sf: 1,954 (2,800 allowed, less than 75%)

Square footage





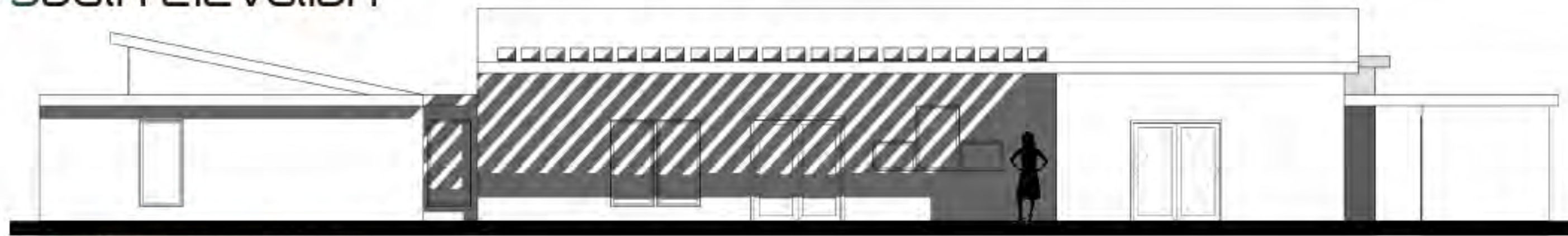
west elevation



east elevation



south elevation



north elevation

elevations





exterior rendering





exterior rendering





interior rendering

