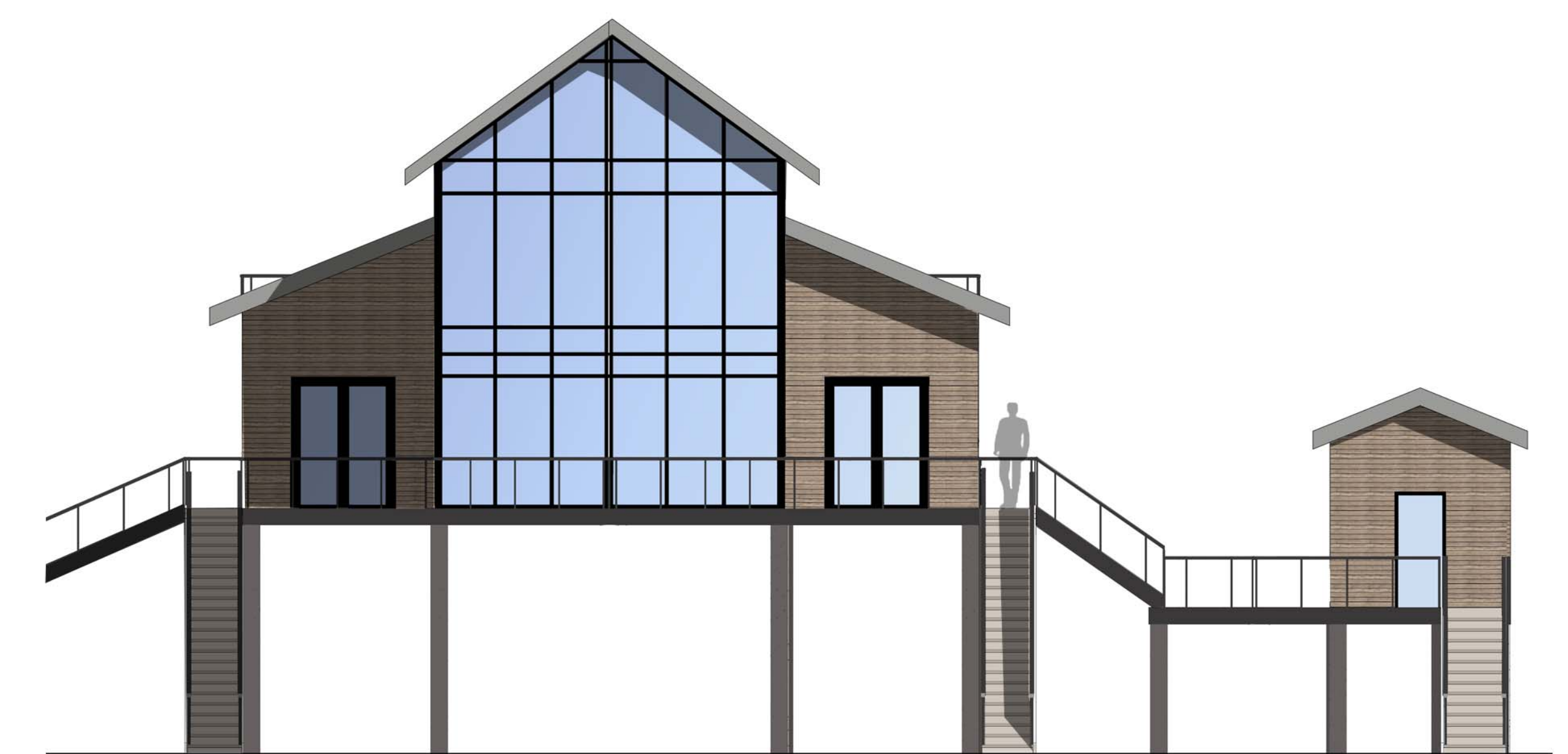


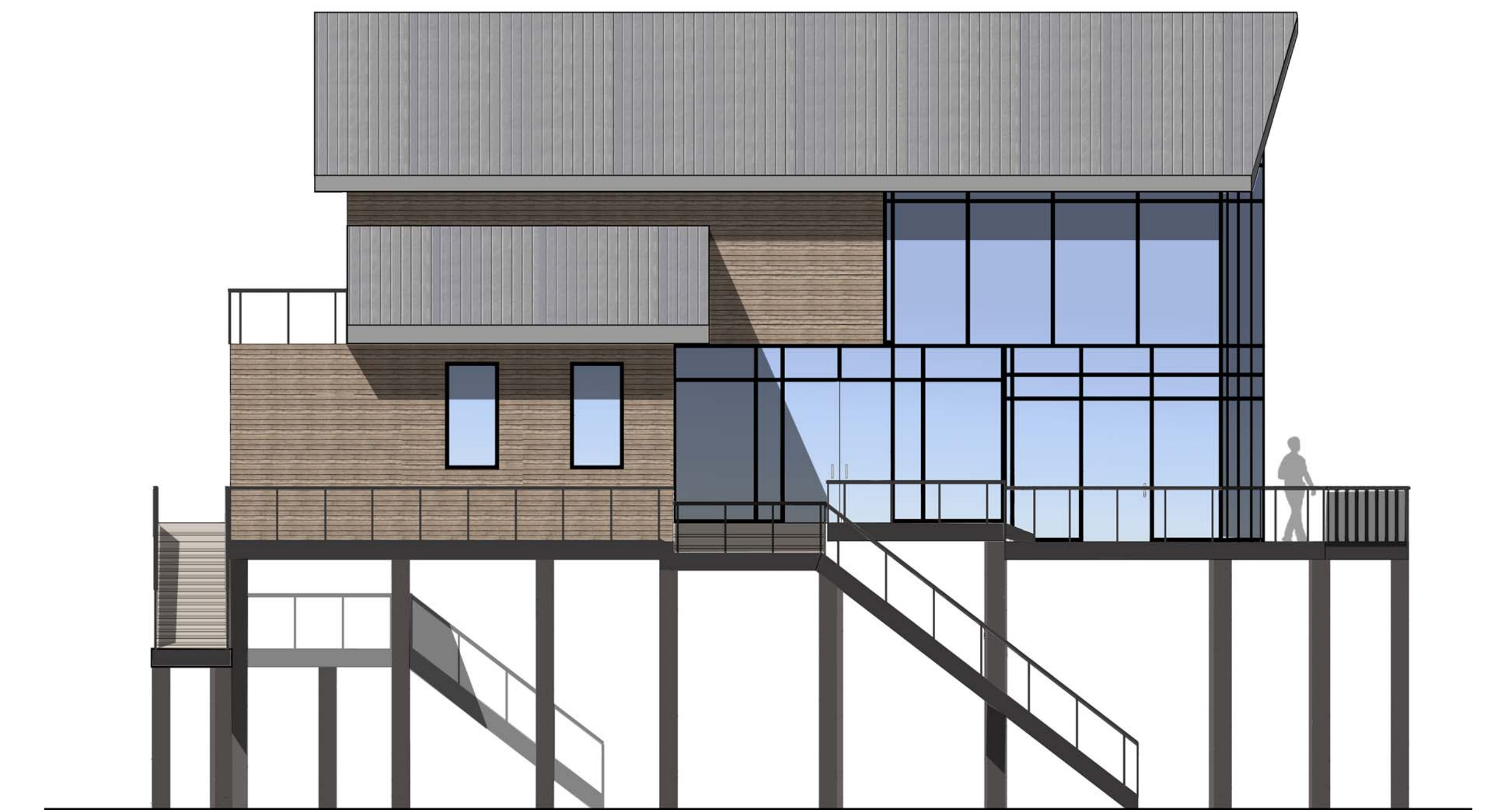
EAST ELEVATION



WEST ELEVATION



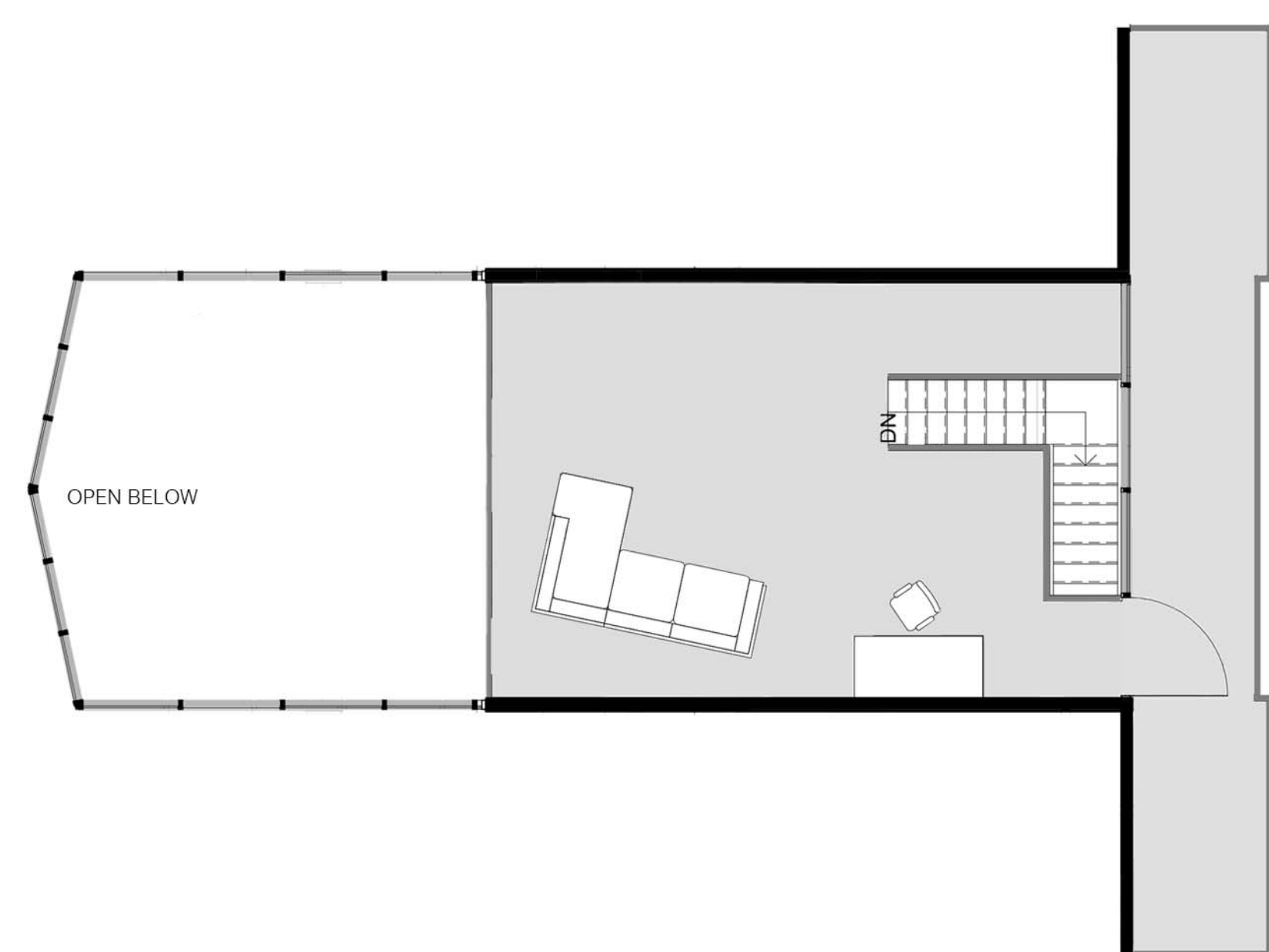
SOUTH ELEVATION



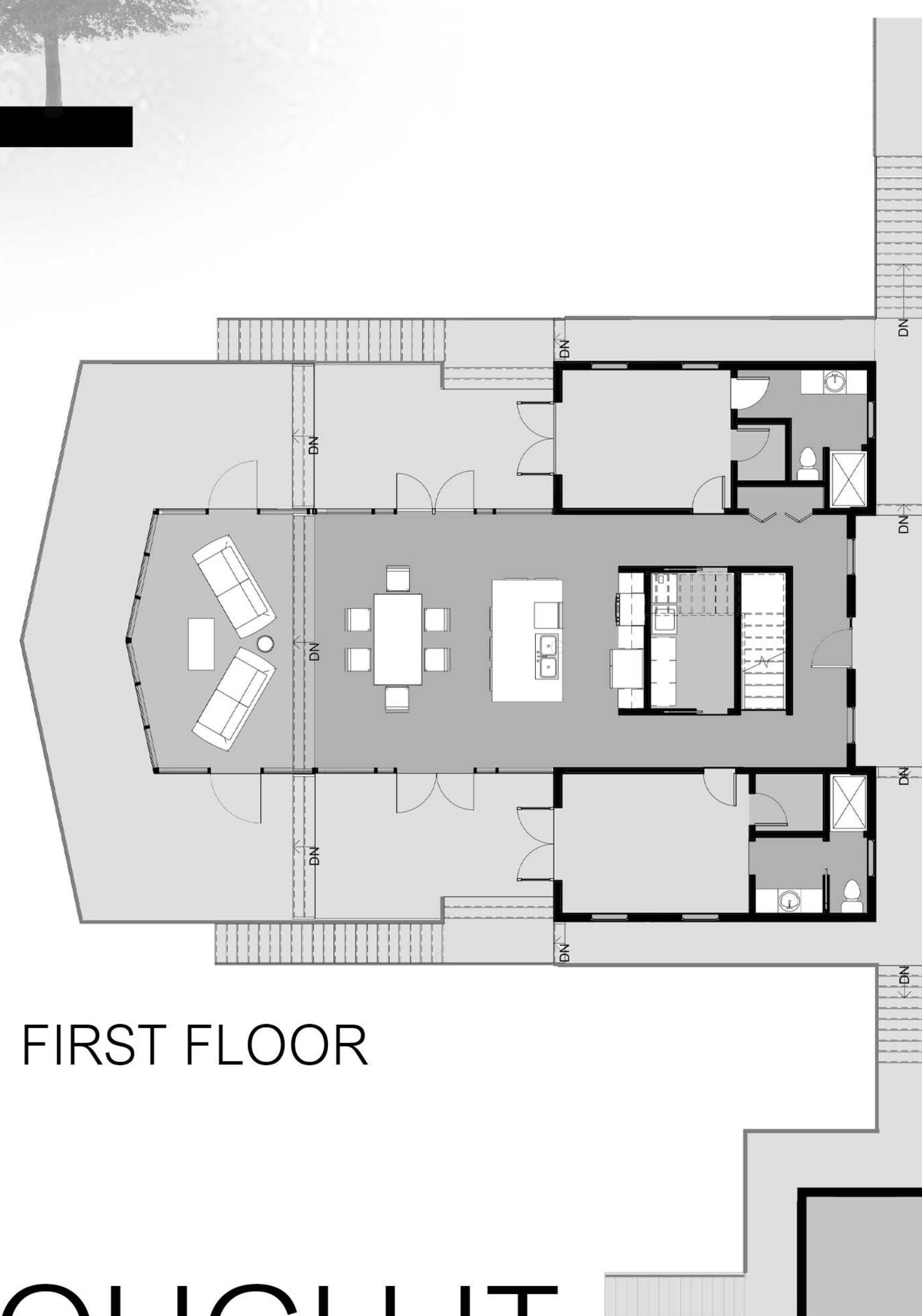
NORTH ELEVATION



CROSS SECTION



SECOND FLOOR



FIRST FLOOR

## SYMMETRY

THE FLOOR PLAN IS MIRRORED ON A CENTRAL AXIS BALANCING SIMILAR ELEMENTS ON OPPOSITE SIDES OF THE AXIS.

## LAYERING

THE CHANGE IN FLOOR LEVELS SEPERATE THE BUILDING INTO MULTIPLE LAYERS.

## ALIGNMENT

THE DECK IS ALIGNED WITH THE WALLS OF THE HOUSE CONNECTING EACH ELEMENT, CREATING A FORM OF BALANCE.

## SPACE

THE MAIN AREA OF THE HOUSE CONTAINS MULTIPLE ROOMS WITHIN ONE SPACE DEFINED BY CHANGES IN FLOOR LEVELS AND CEILING HEIGHTS.



# A RIVER RUNS THROUGH IT

KRISTEN ALBERT