

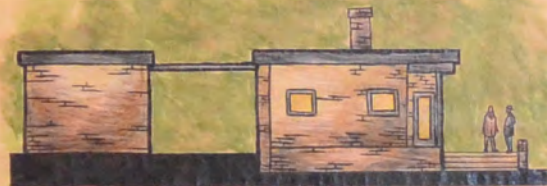
SOUTH ELEVATION

SCALE: 1/8" = 1'-0"

FACING BRICK WALL OF THE HOUSE, WHICH IS TOTALLY BLANK EXCEPT FOR THE RECESSED PANEL THAT FRAMES THE ENTRANCE.

THE BIG RECTANGULAR LIVING AREA, WITH A SOUTH-FACING GLASS WALL, INCLUDES THE KITCHEN BEHIND A FREESTANDING BRICK HEARTH AND CHIMNEY. SUCH OPENNESS WAS BEGINNING TO BE POPULAR IN SUBURBAN AMERICA, BUT WAS STILL DARINGLY INNOVATIVE IN CONSERVATIVE DENMARK. THE DEGREE OF OPENNESS IS CAREFULLY CONTROLLED, HOWEVER. THE HEARTH LOOSELY DEFINES DIFFERENT TYPES OF LIVING SPACE—AN AREA OPEN TO THE VIEW, A DINING ALCOVE, A COZY ZONE NEAR THE FIREPLACE AND A SLIDING DOOR HIDDEN IN THE BRICKWORK OF THE CHIMNEY CAN BE PULLED ACROSS TO HIDE THE KITCHEN WORKTOP WHEN NECESSARY.

VIEWED FROM THE SOUTH, THE HOUSE READS AS A LIGHT-WEIGHT TIMBER FRAME STANDING ON A SOLID-BRICK PLATFORM—OR, IN THE JARGON OF ARCHITECTURAL THEORY, A TECTONIC SUPERSTRUCTURE ON A STEREOTOMIC BASE. THIS IDEA WAS TO BECOME A CENTRAL THEME IN UTZON'S LATER WORKS, NOT LEAST IN THE BUILDING THAT MADE HIM FAMOUS: THE SYDNEY OPERA HOUSE.



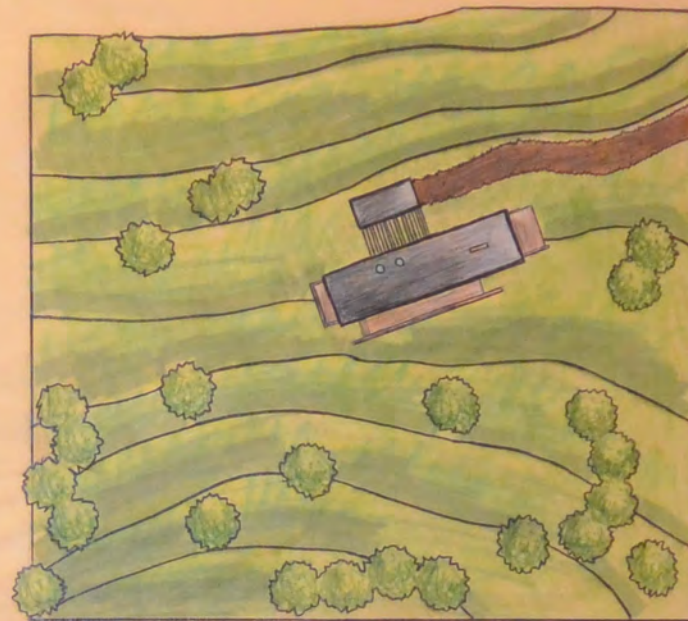
WEST ELEVATION

SCALE: 1/8" = 1'-0"

UTZON HOUSE

HELLEBAEK, DENMARK; 1952

JORN UTZON, 1918-2008

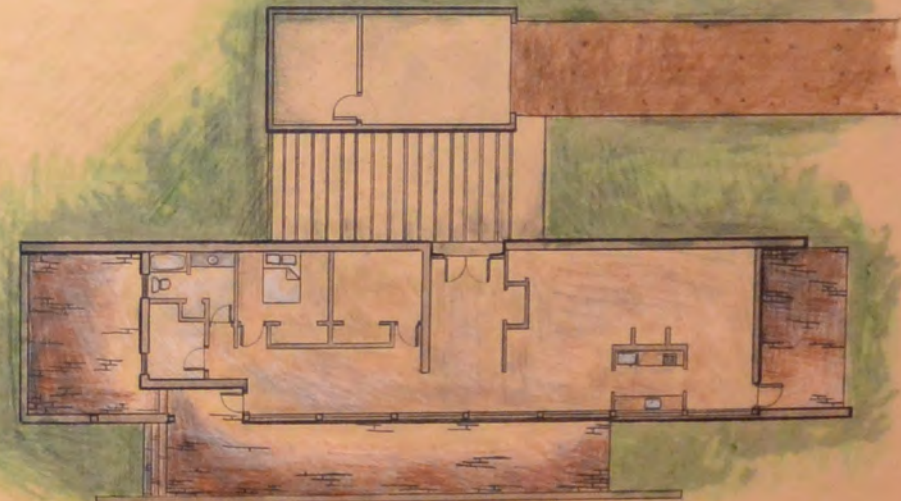


SITE PLAN
SCALE: 1" = 30'

WHEN THE TIME CAME TO MODERNIZE DANISH DOMESTIC ARCHITECTURE IN THE EARLY 1950s, JOHN UTZON WAS WELL PREPARED. HE HAD WORKED FOR ALVARO AALTO IN HELSINKI DURING THE SECOND WORLD WAR; HE HAD VISITED FRANK LLOYD WRIGHT AND MIES VAN DER ROHE WHILE TRAVELLING IN THE USA ON A SCHOLARSHIP IN 1949 AND HE HAD STUDIED NON-WESTERN ARCHITECTURAL TRADITIONS ON TRIPS TO MEXICO AND MOROCCO.

IN 1951, HE WAS 32 YEARS OLD AND MARRIED WITH THREE CHILDREN. HIS FAMILY NEEDED A HOME; SINCE THE INCOME FROM HIS ARCHITECTURAL PRACTICE WAS UNCERTAIN, IT WOULD HAVE TO BE A CHEAP ONE. HE FOUND A SITE IN THE WOODED GROUNDS OF A LARGE HOUSE NEAR HELSINGOR AND APPLIED FOR A LOW-INTEREST GOVERNMENT LOAN. HE DECIDED TO DISPENSE WITH A FORMAL BUILDING CONTRACT AND DEVELOP THE DESIGN WITH A SYMPATHIC LOCAL BUILDER. THE RESULT WAS ONE OF THE FIRST TRULY MODERN, OPEN-PLAN HOUSES IN DENMARK.

SINGLE-STORY AND FLAT-ROOFED, WITH HEARTH AND KITCHEN AT THE CORE OF PLAN, THE HOUSE WAS CLEARLY INFLUENCED BY WRIGHT'S Usonian HOUSES, SUCH AS THE JACOBS HOUSE OF 1936, BUT THERE ARE KEY DIFFERENCES. THE LONG DRIVE ENDS UNDER A PERGOLA SPANNING BETWEEN THE GARAGE AND THE NORTH-



FLOOR PLAN

SCALE: 1/8" = 1'-0"