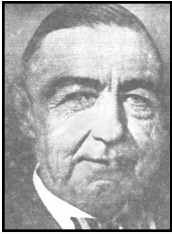


TOP TAGGART FIELD/WHEELER PAVILION

Top Taggart Field has served as home for the Ferris State football team since 1957.

Officially dedicated in October 1978, the stadium is centrally located on the FSU campus and features a current seating capacity of 6,200. Permanent lighting makes it possible for night games, which are popular with the Bulldog faithful during the early part of the season.

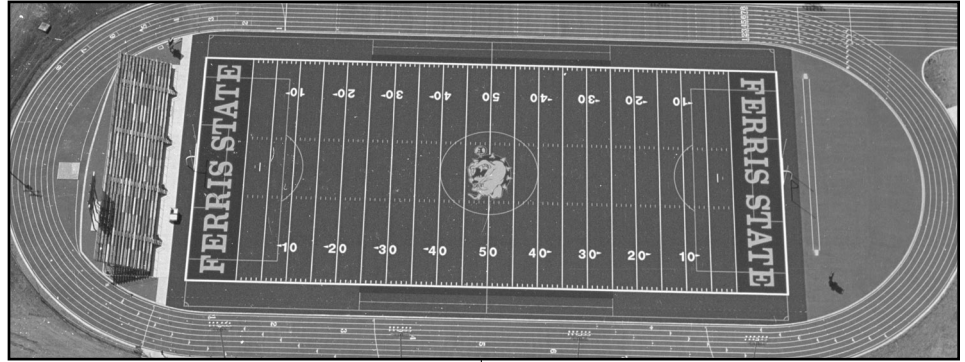


W.C. TAGGART

The facility also has been used extensively by individuals outside the University community as Top Taggart Field has hosted numerous athletic events on the high school level.

Presently, the facility is midst a multi-phase renovation and construction project. The initial phase, completed in August 1998, involved the installation of an AstroTurf 12 playing surface which is considered by experts as the highest quality artificial turf on the market. The playing field is surrounded by a new 400-meter, eight-lane track with a brick red urethane surface. A new electronic scoreboard was installed in June 2000.

Phase two of the project was completed in August 2001 with the construction of the Wheeler Pavilion, named in honor of alumnus John



Wheeler and his wife, Chris. The three-story building, which is located on the stadium's west side, features a clubroom level, a media/game management level, a ticket office, remodeled and expanded restrooms along with a remodeled, expanded and covered concession area. The project also involved upgrading the main entrance, improving site landscaping, adding 250 center section seats and a new lighting system.

Phase three would entail construction of locker rooms, a weightroom and coaches' offices. Funding for this tentative project would be raised through private donations.

The field is named in honor of W.C. "Top" Taggart. As a child, his own family circle affixed the name "Top." The name become synonymous with Taggart and inevitably "Top" became a sym-

bol of affection and respect held for him by everyone. A Big Rapids native and a former Bulldog star halfback, Taggart became Ferris' first official varsity football coach, beginning with the 1912 season. His contributions to Ferris and Big Rapids go much further. Taggart served on the Ferris Board of Control from 1931-50, including five years as its chairman, and was a long-time benefactor of Ferris in countless ways. As a businessman, he was a pioneer in the natural gas development and production industry, and was president of the Taggart Company in Big Rapids. He passed away in 1968, but not before Ferris officials recognized him in October, 1957, during dedication ceremonies of the University's football facility. Taggart was inducted into the Ferris State Bulldog Athletics Hall of Fame in 2002.

TOP 10 TOP TAGGART FIELD CROWDS

ATTENDANCE	OPPONENT	DATE	RESULT
1. 12,545	Saginaw Valley State (HC)	10/4/75	L 28-31
2. 12,500	Hillsdale (HC)	10/15/83	L 14-27
3. 12,000	Findlay (HC)	10/30/71	W 28-13
4. 11,970	Wayne State (HC)	10/18/80	W 17-14
5. 11,500	Hillsdale (HC)	10/17/81	L 17-20
6. 10,750	Alma	9/27/80	W 24-16
7. 10,560	Hillsdale (HC)	10/14/78	W 14-3
8. 10,500	Central State (Ohio)	9/17/83	L 32-48
9. 10,239	Hillsdale (HC)	10/13/79	W 19-0
10. 10,200	Wayne State (HC)	10/13/73	W 28-7
11. 8,426	Grand Valley State▲	8/28/04	L 6-24

HC - Homecoming ▲ - Modern Day Record

FERRIS STATE'S YEAR-BY-YEAR RECORD/ATTENDANCE AT TOP TAGGART FIELD

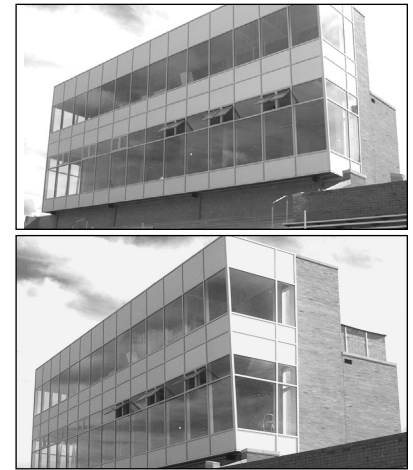
YEAR	RECORD	PCT.	ATTEND.	1981	3-1-0	.750	33,100
1957	2-1-0	.667	N/A	1982	0-4-0	.000	23,675
1958	2-4-0	.333	N/A	1983	0-5-0	.000	37,200
1959	3-1-0	.750	N/A	1984	2-3-0	.400	23,100
1960	3-1-0	.750	N/A	1985	3-2-0	.600	24,640
1961	3-2-0	.600	N/A	1986	3-2-0	.600	20,336
1962	2-2-0	.500	N/A	1987	1-4-0	.200	12,305
1963	3-1-0	.750	N/A	1988	4-1-0	.800	16,505
1964	0-3-1	.125	N/A	1989	2-3-0	.400	17,920
1965	0-4-0	.000	N/A	1990	3-1-1	.700	17,995
1966	1-2-1	.375	N/A	1991	2-4-0	.333	14,295
1967	0-3-1	.125	14,200	1992	5-1-0	.833	20,550
1968	3-0-0	1.000	15,200	1993	4-0-1	1.000	18,635
1969	3-1-0	.750	17,800	1994	6-1-0	.857	23,521
1970	3-1-0	.750	19,500	1995	7-0-0	1.000	23,448
1971	2-3-0	.400	24,800	1996	5-1-0	.833	20,758
1972	4-2-0	.667	20,312	1997	1-5-0	.167	26,932
1973	2-1-1	.625	26,100	1998	3-2-0	.600	26,315
1974	2-2-1	.500	30,269	1999	3-1-0	.750	14,087
1975	0-5-0	.000	27,245	2000	2-3-0	.400	11,605
1976	3-2-0	.600	19,793	2001	4-1-0	.800	15,400
1977	1-3-0	.250	20,400	2002	4-1-0	.800	15,786
1978	2-2-1	.500	28,107	2003	3-2-0	.600	12,126
1979	2-2-0	.500	32,489	2004	2-3-0	.400	16,654
1980	3-2-0	.600	38,180	TOTALS	121-101-8	.543	821,283

WHEELER PAVILION

The \$1.8 million state-of-the-art Wheeler Pavilion is the latest addition to Top Taggart Field and allows Ferris State University to have one of the nation's top Division II football-playing facilities.

The three-story building was constructed in 2001 through the generosity of alumnus John Wheeler ('76), Chief Executive Officer of Rockford Construction Company and the Rockford Development Group. Wheeler and his wife, Chris, pledged \$500,000 and an in-kind gift of \$100,000 in professional services.

A public fundraising campaign raised \$600,000 in contributions and pledges, which was matched by the University. A groundbreaking ceremony for the facility was held March 5, 2001.



SERIES RECORDS AT TOP TAGGART FIELD

OPPONENT	RECORD	OPPONENT	RECORD	OPPONENT	RECORD
Adrian	1-1-0	Illinois-Chicago	2-0-0	Olivet Nazarene (Ill.)	1-0-0
Albion	1-1-0	Illinois College	1-0-0	Peru State (Neb.)	1-0-0
Alma	2-0-0	Illinois Extension	3-0-0	Saginaw Valley State	8-8-0
Ashland	3-5-0	Illinois State	1-0-0	St. Francis (Ill.)	1-1-0
Baldwin-Wallace	0-2-0	Indiana (Pa.)	1-2-0	St. Joseph's (Ind.)	4-0-1
Butler	3-0-0	Indianapolis	7-4-1	St. Norbert (Wis.)	2-3-0
Central Iowa	0-1-0	Iowa Wesleyan	1-0-0	Valparaiso	1-1-0
Central Michigan	0-1-0	Kalamazoo	1-3-0	Wayne State (Mich.)	9-8-0
Central State (Ohio)	0-4-0	Lakeland (Wis.)	1-0-0	West Chester (Pa.)	1-0-0
Clarion (Pa.)	1-2-0	Mercyhurst	1-1-0	Westminster (Pa.)	0-1-0
Dayton	0-1-0	Michigan Tech	10-8-3	West Virginia State	1-0-0
Eastern Illinois	1-1-1	Millersville (Pa.)	1-1-0	William Penn (Pa.)	1-0-0
Edinboro (Pa.)	1-0-0	New Haven (Conn.)	1-0-0	Wilmington (Ohio)	1-0-0
Findlay	5-3-0	Northeastern Illinois	1-0-0	Wisconsin-Milwaukee	4-1-1
Franklin (Ind.)	1-0-0	Northern Michigan	5-4-1	Wisconsin-Platteville	0-2-0
Geneva (Pa.)	1-1-0	North Park (Ill.)	1-0-0	Wisconsin-Whitewater	1-0-0
Grand Rapids JC	0-1-0	Northwood	8-6-0	TOTALS	121-101-8
Grand Valley State	5-10-1	Ohio Northern	3-2-0		
Hillsdale	9-9-0	Olivet	2-1-0		

