

Ferris State University is in its second century as one of the nation's premier technical and professional universities. Ferris provides practical, "hands-on" education necessary to make its graduates immediately employable in a diverse array of fields.

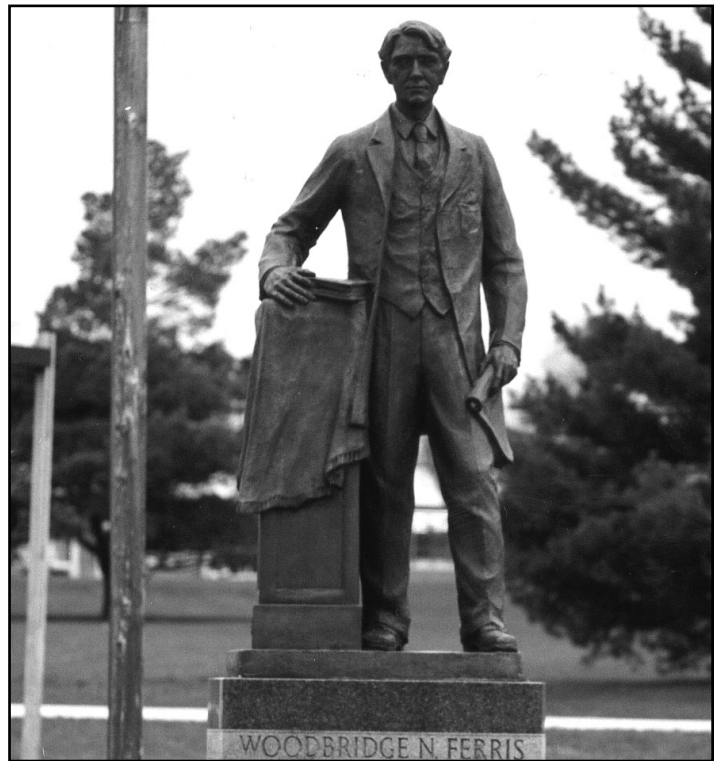
The institution was founded in 1884 by Woodbridge N. Ferris, a former Governor of Michigan and a U.S. Senator. His intent was to provide a practical education for any person with the motivation and potential to benefit.

Today, Ferris State continues to teach technical skills and applications focused on solving real problems, and produces a work force that is prepared to meet the world of high technology. The University offers more than 120 academic programs, designed to respond to the changing needs of manufacturing, business, health care and other industries and professions which are critical to Michigan's economy.

With a student-to-faculty ratio of approximately 16-1, students at FSU receive the individual attention necessary to prepare them for their careers. Additionally, Ferris boasts a placement rate for graduates of 98 percent, one of the best in the Midwest.

The scenic Big Rapids campus is located along the banks of the Muskegon River in the gentle rolling hills of west central Michigan.

Initially, Ferris was known as the Ferris Industrial School, but in 1899 the title was changed to Ferris Institute. It was privately owned and operated until 1931 when it became a non-profit, non-stock education corporation. In 1949, Ferris became a state college, and the school was officially re-named Ferris State College in 1963 and Ferris State University in 1987.



**"Education is life. It involves growth, development and training."  
— Woodbridge N. Ferris**

### FERRIS STATE QUICK FACTS

- ▼ Ferris has the largest undergraduate Surveying Engineering program in the U.S. and the only one in Michigan. The program has a 100% placement rate and a starting salary range of \$32-55K.
- ▼ The Ferris Pharmacy program is one of 83 nationally and the largest school in Michigan. The job placement rate is 100% with a starting salary range of \$75-95K.
- ▼ FSU's Television Production is the only program of its kind in Michigan with an emphasis on professional television. Job placement is 100% with a starting salary range of \$26-30K.
- ▼ Medical Records Administration is the only program of its kind in Michigan. Students consistently exceed the national average on the national boards. Job placement is 100% with 3 to 6 offers per graduate.
- ▼ Ferris' two-year welding technology program is ranked best in the nation with 100% placement and a starting salary range of \$32-40K.
- ▼ In printing management, Ferris has a 100% job placement rate with 15 offers per graduate. Starting salary ranges from \$28,000 to \$40,000.
- ▼ The criminal justice program is one of the largest in Michigan and has a 96% placement rate with a starting salary range of \$30-35+K. Upon graduation, students are certifiable in the state of Michigan.
- ▼ The professional tennis management program, which features a 100% placement rate with a starting salary range of \$30-35K, is one of four in the nation. Upon graduation, students receive a BS in Business Marketing and are USPTA Certified tennis professionals.
- ▼ The Heating, Ventilation, Air Conditioning and Refrigeration (HVACR) Technology program is the only four-year program in Michigan and is one of two nationally. The program boasts a 100% job placement rate with 25 offers per graduate and a starting salary range of \$41-71K. The HVACR, which will open in the fall of 2003, will triple the current facilities size.

#### MISSION STATEMENT

Ferris State University will be a national leader in providing opportunities for innovative teaching and learning in career-oriented, technological and professional education.

