



Ferris Library for Information, Technology and Education

Database Guide: Standard and Poor's NetAdvantage

Standard and Poor's NetAdvantage provides a suite of advanced search engines that allow the location of critical business information and to capture it as either printed copy or electronic files from up to eleven influential Standard and Poor's publications.

Database Information

Search Interface: NetAdvantage has three methods of searching, the home frame, left navigation area and an advanced search.

Simultaneous Users: There is no limit on the number of simultaneous users.

Dates of Coverage: This varies by type of database searched, but in most instances will go back up to four years.

Content: NetAdvantage is composed of the electronic equivalent of these influential and respected Standard and Poor's publications:

- **Bond Guide:** The Bond Guide provides information on over 12,000 corporate, convertible, and foreign bonds
- **Corporation Record:** Provides in-depth financial information on approximately 12,000 publicly-held corporations
- **Dividend Record:** Provides accurate reporting on dividend payments, stock splits, rights distributions and other changes
- **Earnings Guide:** Provides detailed earnings information for approximately 5,000 publicly-traded stocks
- **Industry Surveys:** Provides in-depth economic and business information on 52 major U.S. industries through comprehensive reports
- **Mutual Fund Reports:** Profiles over 11,000 mutual funds, following both small and large funds
- **Register of Corporations, Directors and Executives:** Is the country's foremost directory of corporations and their executives
- **Security Dealers:** Known as the "Red Book" in the industry, this comprehensive directory is the standard for investment professionals who need to keep on top of the comings and goings in the securities industry.
- **Stock Guide:** Profiles over 11,000 common and preferred stocks--listed and NASDAQ
- **Stock Reports:** provides detailed information and analysis on approximately 5,500 publicly-traded companies organized by Public Companies and Closed-End Funds
- **The Outlook:** The Outlook contains S&P's analyses of stock market trends in newsletter format and offers an explicit investment policy.

Search Fields and Limits

Since each database has a different set of search fields, they are not duplicated here. In many instances, the search fields selected will act as a limit as well.

Searching

The main NetAdvantage screen provides a number of places to begin the search process. Current market information will appear in the upper left corner and other “news” type information follows below that. The center section contains links to investment information while the final column allows searching of the various publications. The toolbar along the top also provides a shortcut to some of the publications as well.

The screenshot shows the NetAdvantage website interface. At the top, there is a navigation bar with the Standard & Poor's logo and the NetAdvantage title. Below this is a secondary navigation bar with links for Home, Companies, Industries, Funds, Directories, and Learning Center. The main content area is divided into several sections:

- Today's Market:** A table showing market indices: S&P 500 (1116.46, -1.03, -0.09%), DJ Industrials (10290.23, -23.77, -0.23%), NASDAQ (1942.18, +3.46, 0.18%), and 10 Yr. Note (4.51, +0.01, --).
- Market News:** A section with a "Market Snapshot" for Tuesday, May 4, 2004, featuring a link for "Stocks Fall".
- Bonds:** A section with a "Credit Week Focus" for Thursday, April 22, 2004, featuring a link for "S&P Boosts AMD Credit Rating Outlook".
- Economy:** A section with an "Economic Insight" for Wednesday, April 14, 2004, featuring a link for "Consumer Prices Jump".
- Investment Ideas:** A section with "S&P Stock Picks and Pans" for Tuesday, May 4, 2004, featuring a link for "S&P Upgrades Priceline Shares".
- Takeover Talk:** A section for Tuesday, April 27, 2004, featuring a link for "UnitedHealth Group Agrees to Acquire Oxford Health Plans".
- Learning Curve:** A section for Thursday, April 29, 2004, featuring a link for "Personal Banking For The Merely Rich".
- Industries:** A section with "Industry in Focus" for Wednesday, April 21, 2004, featuring a link for "Restaurants Are Cooking Again".
- Stovall's Sector Watch:** A section for Tuesday, April 27, 2004, featuring a link for "Time for a Seasonal Switch for Stocks?".
- Publication Search:** A search box with a "Select publication" dropdown menu (set to "All"), a "Search by" dropdown menu (set to "Ticker"), and an "Enter" button.
- Tool Box:** A section with "Industry Surveys" (set to "Advertising") and "The Outlook" section, which includes a "Select year and issue" dropdown menu (set to "2004" and "May 05, 2004").
- NetAdvantage Guides:** A section with links for "Stock Report Features Guide" and "Stock Report Evaluations Guide".

To search the various publications you can either select the pull down menu from the right or use the toolbar. Here is the toolbar search for mutual funds.

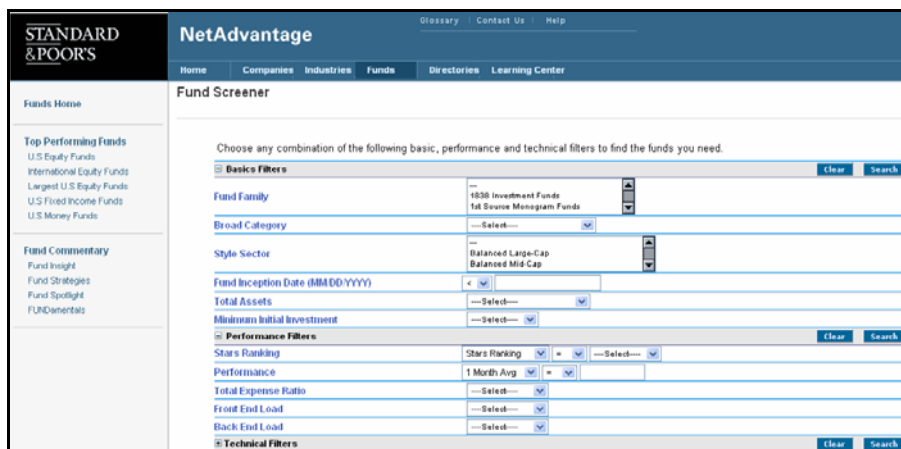
The screenshot shows the NetAdvantage website interface, specifically the Fund Research section. At the top, there is a navigation bar with the Standard & Poor's logo and the NetAdvantage title. Below this is a secondary navigation bar with links for Home, Companies, Industries, Funds, Directories, and Learning Center. The main content area is divided into several sections:

- Top Performing Funds:** A list of fund categories: U.S. Equity Funds, International Equity Funds, Largest U.S. Equity Funds, U.S. Fixed Income Funds, and U.S. Money Funds.
- Fund Commentary:** A section with links for "Fund Insight", "Fund Strategies", "Fund Spotlight", and "FUNDamentals".
- Fund Research:** A search box with a "Search by" dropdown menu (set to "Ticker"), a "Fund Screener" dropdown menu, and an "Advanced Search" button.
- Fund Commentary:** A section with "Fund Strategies" for Thursday, April 29, 2004, featuring a link for "A Contrarian Approach Wins Admirers".
- Fund Spotlight:** A section for Wednesday, April 28, 2004, featuring a link for "A Fund with a Classic Value Mantra".
- FUNDamentals:** A section for Monday, April 19, 2004, featuring a link for "Recipe For Gains".
- Fund Screens:** A section with links for "Top Performing U.S. Equity Funds", "Top Performing International Equity Funds", "Top Performing U.S. Fixed Income Funds", "Top Performing U.S. Money Funds", and "Largest U.S. Equity Funds".

Here you can search for a fund by ticker or name, or do an advanced search which allows searching for a fund based on a wide variety of criteria. Please note that other publications will have similar

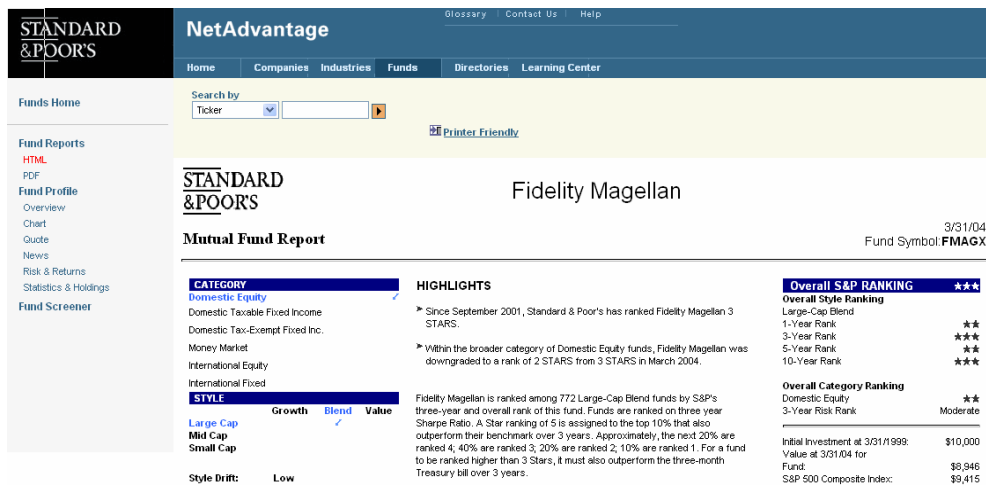
search features. Note also on the right side links to research and commentary relating to the topic at hand.

Here are some of the possibilities available for an advanced search. NetAdvantage provides a wide assortment of search criteria to find a specific fund based on these criteria.



Search Results

Once a search is conducted, the data will be presented. Continuing with our Mutual Fund database, here is the result for a search on the Fidelity Magellan Fund.



In most instances, an option at the left allows access via an HTML or PDF format of the data presented. HTML will generally load quickly, while PDF will look like the print format and be easy to save and print for reading later. For some of the publications, backfiles will be listed as well as the current source. Again, this will vary depending on the publication. The toolbar is always present and to search in a different publication, pick the publication desired and repeat the search. Another useful feature is that depending on which publication you search, the results will point to the other publications where the company is featured. For instance, when you search on General Electric in the Stock Reports, the Related Databases screen displays where you can search GE in the other publications without re-keying the search.

STANDARD & POOR'S NetAdvantage [Glossary](#) [Contact Us](#) [Help](#)

Home Companies Industries Funds Directories Learning Center

Company Profile
 Overview
 Quote
 News
 Chart
Vital Statistics
 Valuation
 Financials
 Corporate Actions
 Industry Information
 Competitors(All)
 Competitors(S&P Covered)
 Industry News
Stock Reports
 HTML
 PDF
Register
Corporation Records
Industry Surveys
 HTML
 PDF
Sub-Industry Reviews

Select publication
 All

Search by
 Ticker ge [Printer Friendly](#)

COMPANY NAME
 GENERAL ELECTRIC COMPANY
 3135 Easton Tpke.
 Fairfield, CT 06431-0001
 (203) 373-2211

COMPANY DATA
Sales: Dollars 31.7 Bil
Employees: 313000
Incorporation Year: 1892
 This is a Fortune 1000 company

STOCK DATA
Ticker Symbol: GE
Stock Exchange(s): New York
 Boston

Printing, Emailing, Saving

NetAdvantage allows printing from either the HTML format or the PDF format. For HTML, use the browser print to print the information as presented on the screen. To save, or print in PDF, use the PDF links that are provided in the left navigation area after performing a search. In most instances, both options are presented. This is the window from the Industry Surveys pull down menu which provides access to earlier issues of the publication

STANDARD & POOR'S NetAdvantage [Glossary](#) [Contact Us](#) [Help](#)

Home Companies Industries Funds Directories Learning Center

Industries Home
 Airlines Archive Sep 2003 [Printer Friendly](#)

Search by
 Ticker

Save a Copy Print Email Search Review & Comment Sign

Select Text 109%

STANDARD & POOR'S Industry Surveys Airlines