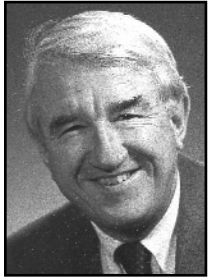




# Ferris State Volleyball

EWIGLEBEN SPORTS ARENA - HOME OF THE BULLDOGS

Since moving into Ewigleben (*pronounced A-VAH-glave-in*) Sports Arena from the Health and Physical Education (HPE) Building in 1981, Ferris State has firmly established a home-court advantage in its volleyball-only facility.



The Bulldogs have posted an impressive 211-55 (.793) overall record at the Ewigleben Sports Arena and compiled six undefeated home seasons (1984, '87, '89, '90, '96 and '02).

The arena, located on the southwest end of campus, is named after former FSU President Dr. Robert L. Ewigleben. The 12th president in university history, Ewigleben served in the position from 1971-83.

With a seating capacity of 600 on the arena's west side and a string of GLIAC Championship banners on the opposite side, the Sports Arena has transpired through the years as a difficult place for the opposition to compete successfully in. Adding to the hostile environment are the fans. Capacity crowds at FSU are nothing new as Ferris led the nation in NCAA Division II volleyball attendance in 1989 while ranking seventh nationally in 1990 and 15th in 1997.

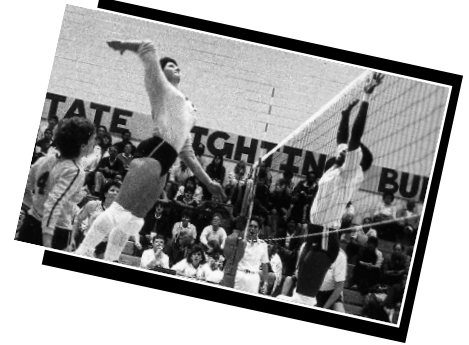
The volleyball arena is a part of FSU's Sports Complex, which also houses the modern 2,400-seat Jim Wink Arena for basketball and the Ewigleben Ice Arena, the remodeled home of Ferris State's Division I ice hockey program. Included in the Sports Complex are a varsity student-athlete weight room, athletic training facilities, a renovated multipurpose room, locker rooms and staff offices.

### ALL-TIME SERIES RECORDS AT EWIGLEBEN SPORTS ARENA

Alaska-Anchorage	0-2
Alderson-Broadus (W.Va.)	1-0
Alma	1-0
Aquinas	1-0
Army	1-0
Ashland	4-0
Bentley (Mass.)	1-0
California (Pa.)	1-0
California State-Sacramento	0-1
Calvin	3-0
Central Michigan	1-4
Eastern Michigan	2-0
Edinboro (Pa.)	1-2
Fairmont State (W.Va.)	3-0
Findlay	2-0
Gannon	2-2
Grand Valley State	14-8
Hillsdale	16-1
Hope	1-0
Indianapolis	1-0
IUPUI-Fort Wayne (Ind.)	7-0
Lake Superior State	23-3
Lansing Community College	1-0
Lewis (Ill.)	10-0
Mercyhurst	4-0
Michigan	1-1
Michigan State	2-0
Michigan Tech	17-4
Montevallo (Ala.)	1-0
Mount Saint Joseph (Ohio)	1-0
Nebraska-Omaha	1-0
North Dakota	1-0
Northern Michigan	15-8
Northwood	11-6
Oakland	9-4
Quincy (Ill.)	1-0
Rochester	1-0
Saginaw Valley State	17-2
Saint Joseph's (Ind.)	2-0
Schoolcraft Community College	1-0
Slippery Rock (Pa.)	1-0
Southern Indiana	2-0
Wayne State	14-5
Western Michigan	0-1
Westminster (Pa.)	1-0
Wheeling Jesuit (W.Va.)	1-0
Wisconsin-Parkside	7-0
Wright State (Ohio)	4-1
<b>Totals</b>	<b>211-55</b>

### YEAR-BY-YEAR RECORD AT EWIGLEBEN SPORTS ARENA (1981-2002)

1981	15-3	1993	9-4
1982	12-3	1994	3-8
1983	9-2	1995	8-5
1984	13-0	1996	8-0
1985	10-2	1997	3-7
1986	10-1	1998	11-2
1987	13-0	1999	13-1
1988	6-5	2000	10-2
1989	10-0	2001	11-3
1990	12-0	2002	8-0
1991	11-1	<b>Totals</b>	<b>211-55</b>
1992	6-6		



In an on-going effort to attract top-quality student-athletes, a wood-surface playing court was installed at Ewigleben Sports Arena in the spring of 2001 and additional renovations were made to the appearance of the facility.

The Ewigleben Sports Arena has been the site of NCAA Division II Regional Championship Tournaments in 1982, '87 and '89. In both '87 and '89, Ferris State won the regional title and advanced to the NCAA-II National Championships.

In seven seasons under head coach Tia Brandel-Wilhelm, the Bulldogs are 64-15 overall at home. FSU is 46-15 in GLIAC outings and 18-0 in non-conference home play under Brandel-Wilhelm.



### NCAA RECORD

Ferris State holds the NCAA Division II record for consecutive matches won. The 1984 Bulldog squad won 46-consecutive matches en route to a 48-3 finish and an appearance in the NCAA Division II Regional Tournament.