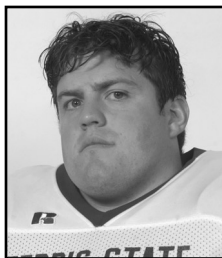
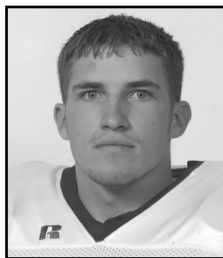


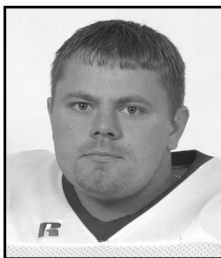
THE 2003 BULLDOGS



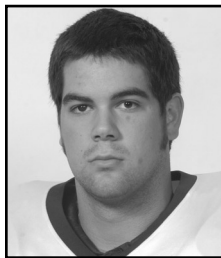
BELL



BIGELOW



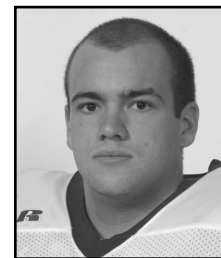
BOCKHEIM



BOURDLAIS



BOWIE



BRETL



WHITNEY BELL
Defensive Tackle
 6-2 ♦ 265 ♦ Junior
 Sault Ste. Marie (Sault Area)

Talented lineman . . . Returns as the starter at right tackle . . . A team leader in the trenches . . . Performed well in spring ball . . . Strongest player on squad as evidenced by team-best 500-pound bench press . . . Runs well . . . Started nine of 10 contests played in 2002 and was FSU's Most Improved Defensive Player . . . Ranked sixth in team tackles with 62 total while his 10 tackles for loss (-35 yds.) was third best . . . Tallied career-best 10 tackles on two occasions - at Northwood (10/5) and at Mercyhurst (10/19) . . . Had eight stops apiece at Findlay (11/2) and vs. Ashland (11/9) . . . Played all 11 games in 2001 . . . Notched season-best two tackles vs. Grand Valley State (10/6) and at Northern Michigan (10/27) . . . Earned all-state laurels at Sault Area High under coach Barry Pierson . . . Two-time All-Upper Peninsula Dream Team and Big North Conference pick . . . Competed in hockey . . . Worked as a counselor and on-ice instructor at the Pat LaFontaine Hockey School . . . Both parents are teachers . . . FSU Letters: Two . . . Birthdate: 12/28/81 . . . Major: Social Studies.

YEAR	CAREER STATISTICAL TOTALS								
	G-GS	SOLO	ASSIST	TOTAL	INT	SK-YD	TFL-YD	FR	
2001-02	21-9	34	32	66	0	1.5-12	10.5-64	2	



BRAD BIGELOW
Outside Linebacker
 6-2 ♦ 205 ♦ Junior
 Alma

Reserve outside linebacker . . . Expected to receive most of playing time on specialty teams . . . Enters this fall with a clean bill of health and has an opportunity to reach his potential . . . Plagued by injuries and an illness, which forced him to miss the entire 2001 season . . . Athletic-type . . . Runs extremely well and covers a lot of territory . . . Appeared in seven outings a season ago but didn't register a mark in any statistical category . . . Redshirted in 2000 . . . A honorable mention all-stater at Alma High . . . Prepped by Randy Lark . . . Attained All-Mid-Michigan B Conference First-Team honors as a senior . . . 1999 team captain and MVP . . . Played baseball at Montreal's Olympic Stadium on the U.S.A. Age 13 Team and participated in the Colt League World Series against Korea . . . Enjoys hunting . . . Birthdate: 4/1/82 . . . Major: Criminal Justice.



JIM BOCKHEIM
Fullback
 6-1 ♦ 248 ♦ Senior
 Grand Rapids (Catholic Central)

Enters fall drills as the starting fullback . . . Hard-working and aggressive individual . . . A former walk-on . . . Good, physical blocker . . . Sidelined most of spring practice due to injury . . . Switched to fullback in 2000 after playing originally at outside linebacker . . . Reads schemes well . . . Two-time (2001-02) GLIAC All-Academic honoree . . . Appeared in 10 contests each of the last two seasons but hasn't had a rushing attempt during that span . . . Lone carry of 2000 season was a seven-yarder at Michigan Tech (10/21) . . . Three-time FSU Dean's Academic Award winner . . . Two-time all-league selection at Catholic Central High . . . Coached by Tom Passinault . . . Recorded 80 tackles, including nine quarterback sacks as a senior while garnering second-team all-area recognition . . . FSU Letters: Three . . . Birthdate: 4/24/81 . . . Major: Construction Management.

YEAR	CAREER STATISTICAL TOTALS									
	G-GS	ATT	YDS	TD	LG	AVG/N	REC	YDS	TD	
2000-02	23-0	1	7	0	7	7.0	0	0	0	



JIM BOURDLAIS
Tight End
 6-5 ♦ 244 ♦ Freshman
 Newberry

Redshirt freshman tight end . . . Will contend for playing time in reserve capacity . . . Aggressive player with excellent size . . . Effective blocker . . . Good athlete . . . Strong . . . Needs to improve in the receiving aspect of the position . . . Earned all-state honorable mention kudos during senior year at Newberry High . . . Prepped by Brandon Bruce . . . 2002 graduate . . . Received All-Upper Peninsula Dream Team recognition as a tight end . . . Named All-Straits Area Conference on both offense and defense . . . Caught 24 passes for 372 yards while compiling 56 tackles (31 solo) with 13 tackles for -95 yards in senior season . . . Also competed four years each in track and basketball . . . Three-year student council member . . . Younger brother, Bill, is a freshman on the 2002 FSU football team . . . Enjoys hunting and fishing . . . Birthdate: 5/18/84 . . . Major: Criminal Justice.



BRANDIS BOWIE
Flanker
 5-9 ♦ 181 ♦ Sophomore
 Lansing (Sexton)

Talented receiver . . . Battling for the starting nod . . . Turned in a solid spring . . . Moved to slot receiver in spring drills . . . Improving . . . Good hands . . . Route running skills have improved . . . Played in nine contests a season ago as a true frosh and started in two outings . . . Finished fourth in both team receptions and receiving yardage . . . Caught six aerials for a season-high 75 yards, including a 28-yard TD in season opener versus Hillsdale (9/7) . . . Had a season-best seven receptions for 54 yards at Mercyhurst (10/19) . . . Posted three catches for 45 yards against Michigan Tech (10/12) . . . Notched a 25-yard TD reception at Findlay (11/2) . . . An All-Capital Area Conference selection at Sexton High in both football and basketball . . . Coached by Dan Bogan . . . 2002 graduate . . . Team MVP in senior year . . . Was team captain in final prep campaign . . . Registered 75 receptions for 891 yards with nine TD's as a senior . . . His sister, Tamara Bowie, played women's basketball at Ball State (1999-03) . . . FSU Letters: One . . . Birthdate: 3/10/84 . . . Major: Career Exploration.

YEAR	CAREER STATISTICAL TOTALS						
	G-GS	REC	YDS	TD	LG	AVG/N	
2002	9-2	31	306	2	28	9.9	

Punt Returns: 1/9, 0 TD, 9 Long, 9.0 Avg.; Kick Returns: 3/36, 0 TD, 16 Long, 12.0 Avg.



JAMIE BRETL
Center
 6-3 ♦ 276 ♦ Sophomore
 Elmhurst, Ill. (York)

Athletic-type lineman . . . Starting center for the second consecutive season . . . Performed well in spring drills . . . Fine pass protector and effective blocker . . . Quick off the ball . . . Moves feet well . . . Agile . . . Has good size and strength combination . . . 2002 GLIAC All-Academic Team pick . . . Started all 10 games at center last fall . . . Originally started out FSU career at tackle . . . Redshirted in 2001 season . . . Earned All-West Suburban Conference accolades and was an all-area runner-up selection as a senior at York High under coach Terry Grider . . . Was a Chicagoland All-Star nominee during his senior season . . . Also competed four years in hockey and two in track . . . His father is a certified public accountant and mother is a teacher . . . Has an older brother and younger sister . . . Enjoys hockey and weightlifting . . . FSU Letters: One . . . Birthdate: 8/16/83 . . . Major: Printing Management.

