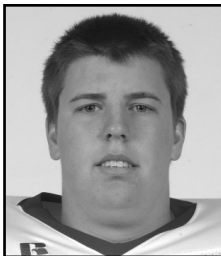


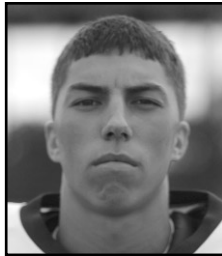
THE 2002 BULLDOGS



PARK



PAULUS



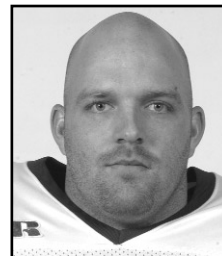
PEREZ



PIEPKOW



PORTER



RILEY



KEVIN PARK
Tackle
6-8 ♦ 285 ♦ Sophomore
Goshen, Ind.

Returns for his second season as a starting right tackle . . . Sideline for spring drills because of injury . . . Physical . . . Fiery competitor . . . Hard worker . . . Has good size/strength combination . . . Vocal leader of the offense . . . Gained weight in the offseason . . . Has made significant strides in improving footwork and flexibility . . . 2001 GLIAC All-Academic recipient . . . Started all 11 contests last season . . . An all-state selection at Goshen High . . . Coached by his father (Brad) . . . Graduated in 2000 . . . Named to the academic all-state squad and all-region team in 1999 . . . Two-time Big State Area selection . . . Had 29 catches for 426 yards and three TD's as a senior . . . Attained All-Northern Lakes Conference H.M. laurels in junior year . . . Competed four years in track and one in basketball . . . Enjoys watching TV and golf . . . Older brother, Kyle, was a quarterback at Ferris State (1998-01) . . . FSU Letters: One . . . Birthdate: 8/9/81 . . . Major: English Education.



DAVE PAULUS
Fullback
6-1 ♦ 226 ♦ Junior
West Bloomfield (Orchard Lake St. Mary's)

Reserve fullback . . . Has displayed tremendous improvement over the last two seasons . . . Aggressive and tough . . . Solid overall blocker . . . Displays great heart and character . . . Has shown tremendous improvement . . . Made lone 2001 season appearance vs. Michigan Tech (10/20) . . . Started playing football in high school and was a 1998 graduate of St. Mary's High School . . . Coached by George Porritt . . . Played at kicker, linebacker and tight end in prep career . . . Attended LeMans Military Academy for three years . . . Awarded Presidential Physical Fitness Award . . . Interests include car detailing and weightlifting . . . Active in the walk for Cystic Fibrosis . . . Nickname is "Boucher" . . . His father is employed as an engineer . . . Birthdate: 3/24/79 . . . Major: Applied Speech Communication.

CAREER STATISTICAL TOTALS										
YEAR	G-GS	ATT	YDS	TD	LG	AVG/N	REC	YDS	TD	LG
2001	1-0	0	0	0	0	0.0	0	0	0	0



TOM PEREZ
Kicker
5-9 ♦ 140 ♦ Junior
Lewiston (Johannesburg-Lewiston)

A former walk-on . . . Returns as team's number one placekicker . . . Needs to become more consistent . . . Selected 2001 FSU Special Teams Player of the Year . . . Ranked tied for 26th nationally in field goals per game (0.82 avg.) . . . Honored as the D2Football.com NE Region and GLIAC Special Team Player of the Week after connecting on all three field goal attempts vs. Indianapolis (11/10) in a double overtime win, which included a 42-yarder and a game-winning 34-yarder vs. Indianapolis (11/10) . . . Booted a season-best 43-yard field goal against Findlay (9/8) . . . Played in three games in 2000, exclusively on kickoffs . . . Earned first-team all-state and all-conference honors at Johannesburg-Lewiston High . . . Prepped by Fred Davis . . . A '99 Michigan High School All-Star Game participant . . . FSU Letters: Two . . . Birthdate: 8/10/80 . . . Major: Elementary Education.

CAREER STATISTICAL TOTALS											
YEAR	G	PAT	PCT	FGM	FGA	PCT	LG	0-29	30-39	40-49	+50
2000-01	14	31-34	.912	9	14	.643	43	1-2	4-6	4-6	0-0



LUKE PIEPKOW
Middle Linebacker
6-3 ♦ 226 ♦ Junior
Clark Lake (Jackson Lumen Christi)

Has potential to be one of GLIAC's best . . . Plagued by injuries which forced him to miss spring ball . . . Compiled a team-high 110 tackles last fall and tallied six double-digit tackle games . . . Recorded career-high 15 stops at Northern Michigan (10/27) and 13 at Mercyhurst (10/13) . . . His 51 tackles in 2000 ranked ninth on the team . . . Had season-high 12 tackles vs. Mercyhurst (10/14) before suffering a season-ending injury . . . Posted 10 tackles vs. Saginaw Valley State (9/16) . . . Two-time all-conference honoree at Lumen Christi High . . . A Jackson Citizen Patriot's All-A-B Dream Team pick . . . Had 115 tackles as a senior . . . Helped LCHS to '98 state semifinal appearance . . . His father (Ralph) and an uncle (Tom Prichard) both played at FSU while two other uncles played at Auburn and Kentucky . . . FSU Letters: Two . . . Birthdate: 4/22/81 . . . Major: Business Administration.

CAREER STATISTICAL TOTALS							
YEAR	G-GS	SOLO	ASSIST	TOTAL	INT	SK-YD	TFL-YD
2000-01	18-15	75	86	161	1	1.5-16	3.5-20

Interception Returns: 1/7, 0 TD, 7 Long, 7.0 Avg.



JESSE PORTER
Split End
6-4 ♦ 201 ♦ Junior
Shepherd

Vying for starting nod . . . Possesses good hands . . . Runs routes well . . . Tall receiver . . . Capable runner after the catch . . . Had a solid spring ball performance . . . Had five catches for 51 yards in eight games played in last year . . . Notched two receptions for 38 yards at South Dakota State (9/1) . . . Caught a five-yard pass vs. Mercyhurst (10/14) in 2000 . . . Earned all-state H.M. honors at Shepherd High under coach Glen Hackney . . . Named to the 1998 Central State Activities Association First-Team . . . Passed for 1,749 yards and 15 TD's in senior season . . . Competed in basketball, baseball and track . . . Enjoys wake boarding and concerts . . . FSU Letters: Two . . . Birthdate: 5/21/81 . . . Major: Business Administration

CAREER STATISTICAL TOTALS					
YEAR	G-GS	REC	YDS	TD	LG
2000-01	18-0	6	56	0	30

AVG/N 9.3



ADAM RILEY
Outside Linebacker
6-0 ♦ 217 ♦ Senior
Corunna

Fifth-year senior . . . Will challenge for playing time at the Chuck position . . . Versatile player . . . Excels on specialty teams . . . Totaled 17 tackles a season ago . . . Compiled a season-best five tackles vs. Michigan Tech (10/20) and garnered four stops at Hillsdale (11/3) . . . Named FSU Special Teams Player-of-the-Year in 2000 . . . Racked up 27 tackles in '00 season . . . Notched season-high eight tackles vs. Hillsdale (11/4) . . . Posted 11 tackles in limited '99 action due to injury . . . Garnered seven tackles at North Dakota State (9/2) . . . Was 12th on team with 43 tackles in 1998, which included a 12- tackle effort vs. Hillsdale (10/31) . . . Two-time all-league pick at Corunna High and is first frosh to letter in 30 years . . . '96 Michigan Prep All-Star Game participant . . . Relatives Dean Weltey and Ed McCartney played football at FSU . . . FSU Letters: Three . . . Birthdate: 10/26/77 . . . Major: Elementary Education.

CAREER STATISTICAL TOTALS							
YEAR	G-GS	SOLO	ASSIST	TOTAL	INT	SK-YD	TFL-YD
1998-01	30-4	58	40	98	0	1.0-7	4.0-7

Kick Returns: 1/8, 0 TD, 8 Long, 8.0 Avg.

