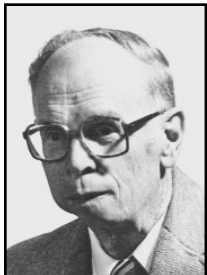


## JIM WINK ARENA

The new Jim Wink Arena in the FSU Sports and Convocation Complex became the home of the Ferris State University men's basketball program on Nov. 30, 1999.

The 2,400-seat arena replaced Old Wink Arena, which had housed the men's basketball team since the 1963-64 campaign.



The need for a new court became necessary after plans were revealed to remodel Old Wink Arena and the remainder of the Health and Physical Education (HPE) Building. The project, which resulted in the state-of-the-art Student Recreation Center, began immediately following the completion of the 1997-98 basketball season.

Ferris State was without a home basketball court in 1998-99 as construction continued on its new arena, forcing the Bulldogs to play their home games at Big Rapids High School.

Construction on the new facility began in July 1998 when Granger Construction broke ground on the project, and was completed in September 1999.

The men's basketball program moved into an arena that includes locker rooms, athletic training facilities and equipment rooms. In addition to standard bleachers, 350 luxury chair-back seats were installed on the North side of the court. The expanded lobby area between Wink Arena and Ewigleben Ice Arena includes restrooms, concession stands, a ticket office and pro shop.

The arena is named after legendary men's basketball coach Jim Wink. Wink, who passed away Aug. 26, 1987, won a team-record 326 games while coaching the

### TOP FIVE MEN'S CROWDS AT THE NEW JIM WINK ARENA (1999-04)

- 1,025 vs. Michigan Tech, 2/28/04 . . . . . W, 70-61
- 978 vs. Calvin, 11/30/99 . . . . . L, 77-90
- 951 vs. Northern Michigan, 2/26/04 . . . . . W, 69-51
- 865 vs. Saginaw Valley State, 2/15/03 . . . . . W, 78-65
- 791 vs. Findlay, 11/30/00 . . . . . L, 61-85

### YEAR-BY-YEAR AT NEW JIM WINK ARENA (1999-2004)

1999-00 . . . . .	2-11	2002-03 . . . . .	5-5
2000-01 . . . . .	5-7	2003-04 . . . . .	7-2
2001-02 . . . . .	1-11	<b>Totals . . . . .</b>	<b>20-36</b>

### ALL-TIME SERIES RECORDS AT THE NEW JIM WINK ARENA

Ashland . . . . .	0-2
Aquinas . . . . .	0-1
Calvin . . . . .	1-1
Findlay . . . . .	0-2
Gannon . . . . .	1-2
Grace Bible . . . . .	1-0
Grand Valley State . . . . .	2-3
Hillsdale . . . . .	1-1
Indiana-Purdue Fort Wayne . . . . .	0-1
Lake Superior State . . . . .	1-3
Mercyhurst . . . . .	1-2
Michigan Tech . . . . .	1-4
Northern Michigan . . . . .	2-3
Northwood . . . . .	3-3
Olivet . . . . .	1-0
Quincy . . . . .	1-0
Saginaw Valley State . . . . .	3-2
St. Joseph's (Ind.) . . . . .	0-2
Wayne State . . . . .	0-3
Westminster . . . . .	0-1
Wisconsin-Parkside . . . . .	1-0
<b>Totals . . . . .</b>	<b>20-36</b>

men's program from 1959-81 and was inducted into the Bulldog Athletics Hall of Fame in 2000. His 21 seasons at the helm of Ferris State's program included five National Association of Intercollegiate Athletics (NAIA) Tournament appearances and two GLIAC Championships.

A six-time NAIA District 23 Coach-of-the-Year, Wink won 20 or more games in a season five times while FSU suffered only four losing campaigns during his tenure.

Wink, an associate professor emeritus of health and physical education, also coached golf at Ferris from 1960-78.

