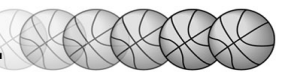




# Ferris State Men's Basketball



UNIVERSITY ATHLETICS AND RECREATION

[www.ferris.edu](http://www.ferris.edu)

Ferris State University continues to build and remodel a number of campus buildings, including numerous athletic facilities. The result is high-quality facilities which benefit athletes, students and the Big Rapids community.

Encompassed among the many projects on campus was the renovation of the Health and Physical Education (HPE) Building, resulting in the creation of the state-of-the-art Student Recreation Center. Construction, which began in March 1998 and was completed in January 1999, resulted in four multi-use courts, a four-lane elevated track, two aerobic studios, a six-lane, 25-yard pool, a 13-person whirlpool, 40-foot climbing wall, fitness center, free weight room, locker rooms, class rooms and administrative offices.

Figures provided by University Recreation show that more than 1,000 students use the facility daily.

The closure of Jim Wink Arena with the HPE Building meant a move for the varsity men's and women's basketball programs. The result was the 2,400-seat Sports and Convocation Complex, which shares an expanded lobby with the Ewgleben Ice Arena. Construction on the complex was completed in the fall of 1999.

In addition to the new lobby, concessions, pro shop and rest rooms, the Ewgleben Ice Arena features a 4,580 square-foot addition which serves as the new home for Bulldog hockey. The locker room, constructed with university funding and money raised by the Bulldog Hockey Pride Committee, includes a player's lounge, film study room, equipment room, training room, coaches' offices and sauna.

Other Ewgleben Ice Arena improvements include a new expanded press box and a hockey locker room for Big Rapids High School.

Katke Golf Course, a university-owned 18-hole course situated on the western side of the Ferris campus, opened a new three-hole practice facility in the spring of 1999. Suggested by the Professional Golfers' Association of America to benefit FSU's Professional Golf Management program, the facility includes an expanded driving range, six target greens and a chipping green with bunkers. Also, a new golf clubhouse opened in the summer of 2000.

The many new facilities, supplemented with existing ones like Ferris State's Racquet and Fitness Center, allow athletes to train and enhance their performance capabilities in the best possible facilities.

