



FERRIS STATE VOLLEYBALL

2008 SEASON PREVIEW

For the Ferris State University women's volleyball team, the 2008 season represents an upcoming campaign which is filled with plenty of reasons for continued success and high expectations.

The Bulldogs, under 13th-year head coach **Tia Brandel-Wilhelm**, return 10 letterwinners of which six were starters from a season ago as the 2008 squad sets its sights on a Great Lakes Intercollegiate Athletic Conference (GLIAC) title and an appearance in the NCAA Division II Tournament.

"I really expect us to have an exciting season," said Brandel. "We are deeper at every position than we have been in a number of years. The key for us will be putting the pieces together and we must execute when it's needed."

Executing is something which has become commonplace when analyzing the amount of success produced by Ferris State in the 35-year history of its women's volleyball program. In the last 10 seasons, the Bulldogs have registered an impressive 220-88 (.714) record while making five NCAA-II Great Lakes Regional Tournament appearances during that span. Furthermore, Ferris State has won at least 20 matches in a single season nine times in Brandel-Wilhelm's 12 years at the helm.

The Bulldogs put forth another solid campaign in 2007, finishing at 20-10 overall en route to recording the program's ninth 20-win season in the last 10 years to date. FSU started out winning eight of its initial nine matches before wrapping up the season winning eight of its final 11 matches and earning a GLIAC Tournament berth for the 10th year in a row.

The success achieved a season ago is beneficial, but Brandel-Wilhelm has already put forth a challenge for this season's team to accomplish more.

"We can have a very successful season if we work together," said Brandel-Wilhelm. "What impresses me is that when we give them a challenge, they really show a lot of determination to meet the challenge."

"Leadership is a key area for our team to step up this season. We graduated some great leaders but our returners have worked to become really great leaders themselves," added Brandel-Wilhelm, who ranked 15th nationally in career winning percentage (.719) and 22nd among active coaches entering the 2008 season.

For Ferris State, the 2008 preseason proved an invaluable learning experience in establishing a mindset of how to prepare for the mental aspects of the game.

"The spring season was a turning point for a lot of our players," Brandel-Wilhelm said. "As a team, we gained a great amount of confidence in our ability to compete at a high level and also understand the importance of playing to our strengths."

SETTER

The setter requires an individual with a high level of skill and athleticism so much that a team's success is often determined by the quality of play from this "floor general" position. Ferris State affords the luxury of having a pair of talented and experienced players in seniors **Andrea Rich** and **Candice Marut**, who both will serve as team captains for the 2008

campaign. Rich, a 2007 All-GLIAC Honorable Mention honoree, led the way with a team-leading and career single-season best 700 assists in 23 matches last season to go with 213 digs and 21 service aces. She racked up at least 40 assists in a match on eight occasions, which featured a school all-time match seventh-place tying 65 helpers in a home triumph over nationally-ranked Hillsdale (10/12). Rich enters her final campaign ranking 11th on the Bulldogs' all-time assists leaders list with a 1,387 career total.

Marut, who has chalked up 1,702 career assists to rank eighth among Ferris' career leaders, was second in team assists a season ago with 620 while ranking fourth in both kills (149) and digs (199). For her efforts, Marut was the recipient of the team's Bulldog Award for displaying the most heart and desire. The previous 2006 campaign, she was tabbed a co-recipient of the FSU Coaches Award.

The two 2007 GLIAC All-Academic Team members have both worked diligently to become strong leaders and the two are integral parts of the Bulldogs' offense.

MIDDLE BLOCKER

Ferris State enters 2008 with what may develop into one of the top blocking tandems in the conference as junior **Kristy Gilchrist** and sophomore **Arielle Goodson** return to the net. A 2007 All-GLIAC Second-Team selection, Gilchrist started coming into her own as she placed second on the team in both kills (336) and total blocks (83). Gilchrist not only enjoyed double-digit kills total in a match 20 times, but also proved effective in serving with a squad-high 48 aces. She finished third among the GLIAC leaders in that statistical category with a 0.49 average. Gilchrist, who was chosen as the GLIAC North Division's Player of the Week last season (10/15) has developed into a well-rounded player and a conscious leader.

Goodson is coming off a great freshman season in which she lead the Bulldogs with 90 blocks as a starter in all 30 matches. Goodson netted a squad-best 21 block solos and was Ferris' top blocker in conference play with an 0.87 average. The coaching staff is confident Goodson will only continue to improve as she worked tremendously hard this offseason to become stronger and smarter as a player.

Another player figuring into the mix and being a contributor is junior **Sarah Lark**, a 2007 GLIAC All-Academic Team member. Lark's 117 kills in 29 matches a season ago represented the sixth highest total on the squad while her 46 blocks was third most.

Sophomore **Danielle Hamilton** saw action in 16 2007 matches and will once again provide quality depth.

OUTSIDE HITTER

Although the graduation loss of 2007 AVCA All-America Second Team and All-GLIAC First Teamer Lindsay Tye is significant, Ferris State must move forward and has some quality players returning. Junior **Katie Edwards** appears well on her way to becoming a viable offensive threat following a highly-productive spring performance. In 30 matches last fall, she accumulated a team third-most 279 kills and turned in double-figure kill totals in 13 encounters. All of her 2007 statistical numbers marked personal career single season highs.

Junior **Amanda Kettlewell** is regarded as a tremendous competitor who also performed at a productive level in spring ball.

Unfortunately, she has been hampered by injuries throughout her collegiate career and must stay healthy in 2008 to lend a contribution. Kettlewell appeared in 19 matches last season and had a squad seventh-place 51 kills.

LIBERO/DEFENSIVE SPECIALIST

This position is expected be one of the determining factors in the Bulldogs' level of success this fall. Sophomores **Whitney Rupp** and **Dana Ruttle** along with red-shirt freshman **Lisa Tobiczky** will vie for the starting job. Rupp and Ruttle received action in 25 and 16 matches, respectively, a season ago. Redshirt frosh **Leslie Swanson** should benefit from a season of adapting to the collegiate game.

NEWCOMERS

The Bulldogs welcome an exceptional freshmen class which Brandel-Wilhelm believes is one of the finest in her tenure at FSU. The incoming six-member group is expected to have a significant impact on the program's fortunes. All are top-notch students with unquestionable work ethics who do everything which is expected of them and more.

Returns

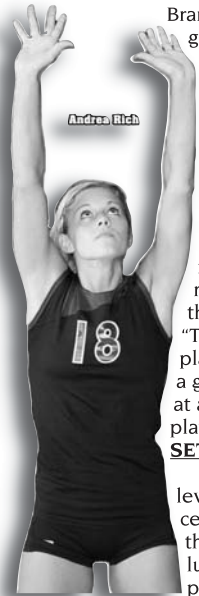
No.	Player	Pos.	Yr.	Ht.	Exp.
1	Katie Edwards	OH	Jr.	5-11	2L
2	Amanda Kettlewell	OH	Jr.	5-10	2L
3	Candice Marut	S/OH	Sr.	5-10	3L
4	Dana Ruttle	S/DS	So.	5-7	1L
5	Arielle Goodson	MH	So.	6-2	1L
9	Sarah Lark	MH	Jr.	5-11	2L
13	Whitney Rupp	LIB	So.	5-8	1L
15	Danielle Hamilton	MH	So.	6-0	1L
18	Andrea Rich	S/OH	Sr.	5-10	3L
20	Kristy Gilchrist	MH	Jr.	6-0	2L

Newcomers

No.	Player	Pos.	Yr.	Ht.	Exp.
6	Leslie Swanson	S/DS	RFr.	5-10	RS
7	Anne Sutton	MH	Fr.	6-2	HS
8	Ashley Huntley	OH	Fr.	5-10	HS
11	Samantha Fordyce	S	Fr.	5-11	HS
12	Lisa Tobiczky	LIB	RFr.	5-8	RS
16	Mallory Kopa	MH	Fr.	5-11	HS
17	Aly Brecht	OH	Fr.	5-10	HS
19	Karen Thompson	OH	Fr.	5-10	HS

MH – Middle Hitter OH – Outside Hitter S – Setter
DS – Defensive Specialist LIB – Libero RS – Redshirted

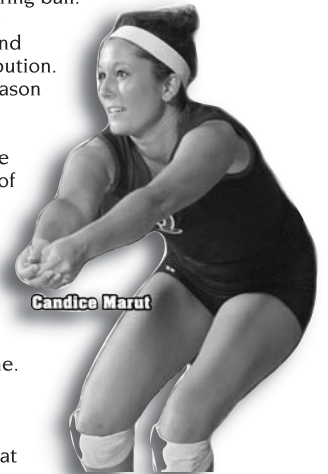
BULLDOG VOLLEYBALL - 2008 PREVIEW



Andrea Rich



Kristy Gilchrist



Candice Marut