

## THE 2004-05 BULLDOGS



### NICK SCHEIBLE

5-11 ♦ 189 ♦ Junior ♦ Right Wing  
Big Rapids, Michigan

**2004-05:** A hard-working player . . . Assistant captain . . . Should get more ice time this campaign . . . One of team's best conditioned skaters . . . His game shows consistent improvement . . . Competitive and dependable . . . A role player who reads plays well . . . Solid performer in the classroom . . . Emerging leader in the lockerroom . . . A former walk-on.

**2003-04:** Appeared in 25 outings . . . Co-recipient of FSU's Steve Banonis Most Improved Player Award . . . Received both CCHA Academic Special Mention and FSU Dean's Academic Award kudos for the second straight season . . . Posted a career-best three points against Alaska Fairbanks (1/2), which included two goals . . . Tallied a goal in season home opener versus Western Michigan (10/11) and recorded a lamplighter against Michigan State (11/1) . . . Picked up an assist in FSU's 3-1 victory over Wisconsin (12/28) to capture Badger Hockey Showdown title . . . Totaled season-high three points (2-1-3) in five January encounters.

**2002-03:** Played in 16 contests . . . Tallied first collegiate goal in a 5-3 victory at Michigan State (12/7) . . . Registered a point (assist) in road encounters against Connecticut (12/30) and Michigan (1/31) . . . Credited with an assist in CCHA Tournament first-round opener vs. Lake Superior State (3/14).

**2001-02:** Redshirted.

**HIGH SCHOOL/JUNIOR:** Played for the Listowel (Ont.)

Cyclones of the Mid-Western Junior B Ontario Hockey Association from 1999-01 . . . Coached by Jeff

Ballantyne . . . Registered 43 points on 25 goals and 18 assists in 2000-01 . . . Two-time team captain and team

MVP . . . Posted 33 goals and added 25 assists for a team-leading 58 points along with three hat tricks in the 1999-00 campaign en route to attaining team

Rookie-of-the-Year honors . . . Named to MWHJL All-Star Team . . . Compiled 68 points with 38 goals and 30

assists in 29 games in guiding Big Rapids High School to a 20-7-2 overall record during his senior year . . . Prepped by former FSU standout Jim Baker . . . Tallied 42 goals and picked up 30 assists for 72 points in junior season as the Cardinals notched a 25-2-1 mark . . . Racked up a combined 10 hat tricks in prep career, including six as a junior in 1997-98 . . . Two-year all-state honoree and team MVP in hockey . . . A 1999 graduate of Big Rapids High School . . . Competed four years in football and three in baseball . . . Academic all-state pick and team MVP in football . . . All-area and all-region selection in baseball . . . Served in Student Government.

**PERSONAL:** Born 9/15/80 in Big Rapids, Mich. . . Son of Bill and Lynne Scheible . . . His father, who's an insurance agent, is a former alumni director and football player at Ferris State . . . His mother works as a management consultant . . . Has a younger sister . . . Enjoys golf and boating . . . Shoots: right . . . FSU Letters: Two . . . Marketing major.

### SCHEIBLE'S CAREER STATISTICS

| CAREER        |           |          |          |           |           |          |          |          |             |
|---------------|-----------|----------|----------|-----------|-----------|----------|----------|----------|-------------|
| YEAR          | GP        | G        | A        | Pts       | +/-       | PP       | SH       | GW       | PN/PIM      |
| 2002-03       | 16        | 1        | 3        | 4         | 0         | 0        | 0        | 0        | 1/2         |
| 2003-04       | 25        | 4        | 2        | 6         | -3        | 1        | 0        | 0        | 5/10        |
| <b>TOTALS</b> | <b>41</b> | <b>5</b> | <b>5</b> | <b>10</b> | <b>-3</b> | <b>1</b> | <b>0</b> | <b>0</b> | <b>6/12</b> |

| CCHA          |           |          |          |          |           |          |          |          |             |
|---------------|-----------|----------|----------|----------|-----------|----------|----------|----------|-------------|
| YEAR          | GP        | G        | A        | Pts      | +/-       | PP       | SH       | GW       | PN/PIM      |
| 2002-03       | 11        | 1        | 1        | 2        | -1        | 0        | 0        | 0        | 0/0         |
| 2003-04       | 18        | 4        | 1        | 5        | -2        | 1        | 0        | 0        | 5/10        |
| <b>TOTALS</b> | <b>29</b> | <b>5</b> | <b>2</b> | <b>7</b> | <b>-3</b> | <b>1</b> | <b>0</b> | <b>0</b> | <b>5/10</b> |

| CAREER BESTS   |  |
|--|--|
| <b>Goals (Game):</b> 2 (1/2/04 vs. Alaska Fairbanks)                 |  |
| <b>Assists (Game):</b> 1 (5 times, last 1/2/04 vs. Alaska Fairbanks) |  |
| <b>Points (Game):</b> 3 (1/2/04 vs. Alaska Fairbanks)                |  |

### BY THE NUMBERS AGAINST 2004-05 OPPONENTS

|                               |             |                             |             |
|-------------------------------|-------------|-----------------------------|-------------|
| Alaska Fairbanks . . . . .    | 2 GP, 2-1-3 | Nebraska-Omaha . . . . .    | 4 GP, 0-0-0 |
| Bemidji State . . . . .       | 0 GP        | Northern Michigan . . . . . | 2 GP, 0-0-0 |
| Bowling Green State . . . . . | 3 GP, 0-0-0 | Notre Dame . . . . .        | 2 GP, 0-0-0 |
| Clarkson . . . . .            | 0 GP        | Ohio State . . . . .        | 2 GP, 0-0-0 |
| Colgate . . . . .             | 2 GP, 0-0-0 | Western Michigan . . . . .  | 2 GP, 1-0-1 |
| Connecticut . . . . .         | 1 GP, 0-1-1 | Wisconsin . . . . .         | 1 GP, 0-1-1 |
| Lake Superior State . . . . . | 4 GP, 0-1-1 | Yale . . . . .              | 0 GP        |
| Miami (Ohio) . . . . .        | 1 GP, 0-0-0 |                             |             |
| Michigan . . . . .            | 4 GP, 0-1-1 | <b>POSTSEASON</b>           |             |
| Michigan State . . . . .      | 5 GP, 2-0-2 | CCHA Tournament . . . . .   | 2 GP, 0-0-0 |
|                               |             | NCAA Tournament . . . . .   | 0 GP        |

### THE SCHEIBLE FILE

#### FAVORITE TV SHOW:

ESPN's SportsCenter

#### WHY I CHOSE FERRIS STATE:

Great tradition and guys involved in the program

#### IF I COULD MEET ANYONE IN HISTORY:

Ronald Reagan

#### THE MOTTO I LIVE BY:

Work hard, play hard

#### THE MOST DIFFICULT ASPECT OF PLAYING HOCKEY:

The speed

#### THE BIGGEST INFLUENCE ON MY CAREER:

Jim Baker – His hockey knowledge

#### MY PREGAME RITUAL:

Cold bath and relax

#### FAVORITE NHL TEAM:

Detroit Red Wings

#### MOST MEMORABLE COLLEGE HIGHLIGHT:

Member of a CCHA Championship Team

#### MY GREATEST ATHLETIC MOMENT:

Scoring my first college goal vs. Michigan State

#### WHAT MOTIVATES ME?:

Success

#### SOMETHING UNUSUAL ABOUT ME:

My red hair

#### DESIRED OCCUPATION

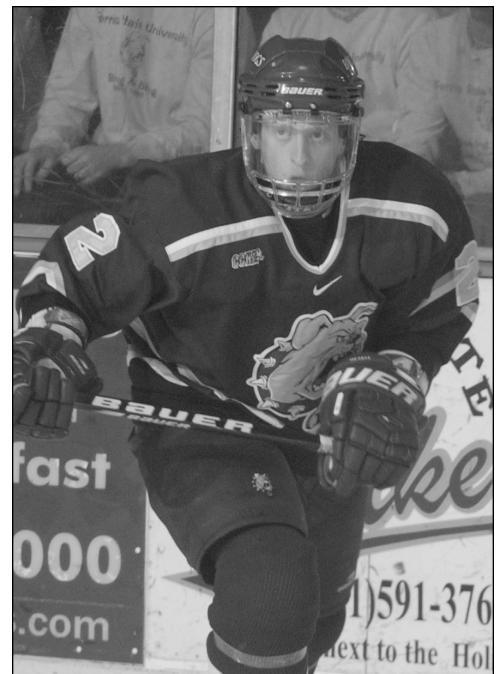
(OTHER THAN HOCKEY PLAYER):

Bullpen catcher in Major League Baseball

#### THE BEST PART ABOUT PLAYING IN OUR

HOCKEY ARENA:

How crazy and loud it is for games



## THE 2004-05 BULLDOGS



### JEREMY SCHERLINCK

6-3 ♦ 201 ♦ Junior ♦ Defenseman  
Grosse Pointe, Michigan



**2004-05:** A solid "defensive" defenseman . . . Expected to log considerable time on the blueline . . . Tall and rangy . . . Excellent passer . . . Displays great poise with the puck and is a sound decision maker . . . Skates well for his size . . . Has good vision on the ice . . . First-line defender on the penalty kill and could also see action in power-play situations . . . Possesses the ability to be one of the CCHA's better "defensive" defenseman.

**2003-04:** Competed in all but two of FSU's 38 games . . . Totaled four points (all assists) in two-game set versus Niagara (11/28-29), which included three helpers in series finale . . . Notched an assist at Western Michigan (1/31) . . . Registered a season-best four points (0-4-4) in seven November contests.

**2002-03:** A Bauer/CCHA All-Rookie Honorable Mention Team pick . . . Placed 10th in team scoring with 18 points in all 42 games . . . Netted seven points (0-7-7) during a five-game point string . . . Posted five points (0-5-5) in a three-game span (3/14-21), which included an assist in FSU's 4-2 win against Northern Michigan in the semifinal round (3/21) of the CCHA Super 6 Championship . . . Compiled four multi-point games (ninth highest on team), including a season-best three points (all assists) against Lake Superior State in first-round CCHA Tourney series finale (3/15) . . . His initial collegiate goal represented the game winner in a 10-1 home triumph over Bowling Green State (10/18) . . . Notched two assists in three home occasions – versus Bowling Green State (10/19), Wayne State (11/8), and Western Michigan (11/15) . . . Finished fifth on squad in game-winning assists with five total.

**HIGH SCHOOL/JUNIOR:** A two-year (2000-02) member of the North American Hockey League's Capital Centre Pride in Lansing, Mich. . . . Coached by Jeff Blum . . . Posted 30 points (tied for eighth on team) with 10 goals and 20 assists in 45 games in 2001-02 . . . Totaled nine goals (eight power-play markers) with 15 assists for 24 points in 27 outings with the Pride in the 2000-01 season . . . Produced 35 points on 10 goals and 25 assists with the Metro AA Jets in 1999-00 as squad was 38-5-2 overall . . . Competed for Belle Tire Bantam A Team in 1998-99, scoring 11 goals with 20 assists for 31 points as team notched a 24-1-0 overall ledge . . . Graduated in 2001 from Grosse Pointe North High School in Grosse Pointe Woods, Mich.

**PERSONAL:** Son of Gerry and Jeanne Scherlinck . . . Born 10/28/82 in Detroit, Mich. . . . His father is employed as a police officer and mother is a lawyer . . . Has a younger sister . . . Enjoys playing and watching hockey . . . Shoots: left . . . FSU Letters: Two . . . Majoring in mathematics education.

### SCHERLINCK'S CAREER STATISTICS

| CAREER        |           |          |           |              |          |          |          |          |              |  |
|---------------|-----------|----------|-----------|--------------|----------|----------|----------|----------|--------------|--|
| YEAR          | GP        | G        | A         | Pts          | +/-      | PP       | SH       | GW       | PN/PIM       |  |
| 2002-03       | 42        | 1        | 17        | 18+13        | 0        | 0        | 0        | 1        | 14/28        |  |
| 2003-04       | 36        | 0        | 5         | 5 -5         | 0        | 0        | 0        | 0        | 6/12         |  |
| <b>TOTALS</b> | <b>78</b> | <b>1</b> | <b>22</b> | <b>23 +8</b> | <b>0</b> | <b>0</b> | <b>0</b> | <b>1</b> | <b>20/40</b> |  |

| CCHA          |           |          |          |              |          |          |          |          |              |  |
|---------------|-----------|----------|----------|--------------|----------|----------|----------|----------|--------------|--|
| YEAR          | GP        | G        | A        | Pts          | +/-      | PP       | SH       | GW       | PN/PIM       |  |
| 2002-03       | 28        | 1        | 8        | 9 +4         | 0        | 0        | 0        | 1        | 11/22        |  |
| 2003-04       | 26        | 0        | 1        | 1 -8         | 0        | 0        | 0        | 0        | 4/8          |  |
| <b>TOTALS</b> | <b>54</b> | <b>1</b> | <b>9</b> | <b>10 -4</b> | <b>0</b> | <b>0</b> | <b>0</b> | <b>1</b> | <b>15/30</b> |  |

### CAREER BESTS

**Goals (Game):** 1 (10/18/02 vs. Bowling Green State)  
**Assists (Game):** 3 (twice, last 11/29/03 vs. Niagara)  
**Points (Game):** 3 (twice, last 1/29/03 vs. Niagara)

### BY THE NUMBERS AGAINST 2004-05 OPPONENTS

|                               |             |                             |             |
|-------------------------------|-------------|-----------------------------|-------------|
| Alaska Fairbanks . . . . .    | 6 GP, 0-2-2 | Nebraska-Omaha . . . . .    | 6 GP, 0-1-1 |
| Bemidji State . . . . .       | 0 GP        | Northern Michigan . . . . . | 5 GP, 0-1-1 |
| Bowling Green State . . . . . | 6 GP, 1-2-3 | Notre Dame . . . . .        | 4 GP, 0-0-0 |
| Clarkson . . . . .            | 0 GP        | Ohio State . . . . .        | 4 GP, 0-1-1 |
| Colgate . . . . .             | 2 GP, 0-0-0 | Western Michigan . . . . .  | 8 GP, 0-3-3 |
| Connecticut . . . . .         | 1 GP, 0-0-0 | Wisconsin . . . . .         | 1 GP, 0-0-0 |
| Lake Superior State . . . . . | 4 GP, 0-4-4 | Yale . . . . .              | 0 GP        |
| Miami (Ohio) . . . . .        | 4 GP, 0-0-0 |                             |             |
| Michigan . . . . .            | 5 GP, 0-0-0 | <b>POSTSEASON</b>           |             |
| Michigan State . . . . .      | 6 GP, 0-0-0 | CCHA Tournament . . . . .   | 6 GP, 0-5-5 |
|                               |             | NCAA Tournament . . . . .   | 2 GP, 0-0-0 |

### THE SCHERLINCK FILE

#### THE BEST THING ABOUT BIG RAPIDS:

Small-town atmosphere

#### FAVORITE NHL TEAM:

Detroit Red Wings

#### THE MOST UNDERRATED PLAYER ON OUR TEAM:

Tim Vokey

#### FAVORITE TV SHOW:

Seinfeld

#### DESIRED OCCUPATION (OTHER THAN HOCKEY PLAYER):

High School Teacher

#### ADVICE I WOULD GIVE TO YOUNGSTERS:

Work hard and don't quit

#### MY PREGAME RITUAL:

Sleeping

#### MY GOAL FOR THE 2004-05 SEASON:

Win!

#### IF I COULD CHANGE ONE THING ABOUT HOCKEY:

Discard visors

#### FAVORITE MOVIE:

Rounders

#### ONE WORD THAT DESCRIBES THIS SEASON'S TEAM:

Doing what it takes and sacrifice

#### FAVORITE SPORT (OTHER THAN HOCKEY):

Football

#### MOST MEMORABLE COLLEGE HOCKEY

#### HIGHLIGHT:

Playing in 2002-03 NCAA West Regional Final

#### THE BEST PART ABOUT PLAYING IN OUR

#### HOCKEY ARENA:

The Dawg Pound – Student Section

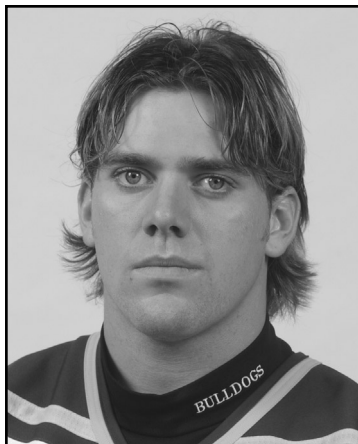


## THE 2004-05 BULLDOGS



### CARTER THOMSON

5-9 ♦ 187 ♦ Senior ♦ Left Wing  
Milden, Saskatchewan



**2004-05:** A physical forward . . . Assistant captain . . . Energy player . . . Aggressive forechecker . . . Competitive individual . . . Good combination of speed and tenacity . . . Will receive playing time on the penalty kill and in even-strength opportunities . . . Durable . . . Supplies another dimension to team's overall speed.

**2003-04:** Competed in 35 of team's 38 contests . . . Tied for 10th in team scoring . . . Accounted for the game-winning goal against Nebraska-Omaha (11/22) and at Wisconsin (12/28) to win the Badger Hockey Showdown . . . Lone multi-point game occurred against Miami (1/16) on a pair of assists . . . Tallied a short-handed marker in season opener at Western Michigan (10/10) . . . Netted a tally at Michigan (11/8) . . . Garnered a point apiece in CCHA Tournament Opening-Round series (3/12-13) at Michigan State, which included a goal in season finale.

**2002-03:** Appeared in 35 contests . . . Placed 15th among squad's top point getters . . . Compiled a pair of season-high two-point outings (0-2-2) in road outings against Michigan (1/31) and Western Michigan (2/16) . . . Scored a goal apiece in home encounters vs. St. Cloud State (10/12) and Bowling Green State (10/18) along with a marker against Lake Superior State (3/14) in the CCHA Tournament First-Round opener . . . Assisted on goals in home games vs. Michigan State (12/6) and Notre Dame (1/10).

**2001-02:** Competed in 33 of 36 games . . . Lone tally came at Bowling Green State (2/8) . . . Credited with an assist in consecutive contests against Bemidji State (1/25-26) . . . Notched an assist at Nebraska-Omaha (11/23) and vs. Ohio State (12/14).

**HIGH SCHOOL/JUNIOR:** Skated two seasons (1999-01) for the Saskatchewan Junior Hockey League's Melville (Saskatchewan) Millionaires . . . Played for coach Steve Young . . . Compiled 68 points with 35 goals and 33 assists in 62 games in 2000-01 as Melville posted a 33-17-10 record . . . His 68 points was second best on the squad and ranked 22nd in the SJHL while his goal-scoring output was 10th highest in the league . . . Earned Direct West Second-Team laurels which encompassed junior players from all of the Saskatchewan Hockey Leagues . . . Achieved second-team SJHL All-Star honors and was the 2001 SJHL All-Star Game MVP . . . Tallied 39 points on 15 goals and 24 assists with Melville in 1999-00 . . . Recipient of the team's Rookie-of-the-Year Award while helping the Millionaires to a 45-12-3 record . . . A 1999 Milden (Saskatchewan) Central High School graduate.

**PERSONAL:** Born 1/12/81 in Milden, Saskatchewan . . . Son of Darren and Chris Thomson . . . Both parents operate a care home for the elderly . . . Has six sisters and one brother . . . Hobbies include video games, cards and the beach . . . Shoots: left . . . FSU Letters: Three . . . Business administration major.

### THOMSON'S CAREER STATISTICS

| CAREER        |            |           |           |           |           |          |          |          |           |           |
|---------------|------------|-----------|-----------|-----------|-----------|----------|----------|----------|-----------|-----------|
| YEAR          | GP         | G         | A         | Pts       | +/-       | PP       | SH       | GW       | PN        | PN/IMP    |
| 2001-02       | 33         | 1         | 4         | 5         | -9        | 0        | 0        | 0        | 0         | 18/36     |
| 2002-03       | 35         | 3         | 7         | 10        | +6        | 0        | 0        | 0        | 0         | 10/28     |
| 2003-04       | 35         | 6         | 3         | 9         | +2        | 0        | 1        | 2        | 12/32     |           |
| <b>TOTALS</b> | <b>103</b> | <b>10</b> | <b>14</b> | <b>24</b> | <b>-1</b> | <b>0</b> | <b>1</b> | <b>2</b> | <b>40</b> | <b>96</b> |

| CCHA          |           |          |           |           |           |          |          |          |          |              |
|---------------|-----------|----------|-----------|-----------|-----------|----------|----------|----------|----------|--------------|
| YEAR          | GP        | G        | A         | Pts       | +/-       | PP       | SH       | GW       | PN       | PN/IMP       |
| 2001-02       | 25        | 1        | 2         | 3         | -6        | 0        | 0        | 0        | 0        | 13/26        |
| 2002-03       | 25        | 2        | 6         | 8         | +3        | 0        | 0        | 0        | 0        | 6/12         |
| 2003-04       | 28        | 3        | 2         | 5         | -4        | 0        | 1        | 1        | 1        | 9/26         |
| <b>TOTALS</b> | <b>78</b> | <b>6</b> | <b>10</b> | <b>16</b> | <b>-7</b> | <b>0</b> | <b>1</b> | <b>1</b> | <b>1</b> | <b>28/64</b> |

| CAREER BESTS  |  |
|---|--|
| <b>Goals (Game):</b> 1 (10 times, last 3/13/04 at Michigan State) |  |
| <b>Assists (Game):</b> 2 (3 times, last 1/16/04 vs. Miami (Ohio)) |  |
| <b>Points (Game):</b> 2 (3 times, last 1/16/04 vs. Miami (Ohio))  |  |

### BY THE NUMBERS AGAINST 2004-05 OPPONENTS

|                               |              |                             |              |
|-------------------------------|--------------|-----------------------------|--------------|
| Alaska Fairbanks . . . . .    | 10 GP, 0-0-0 | Nebraska-Omaha . . . . .    | 8 GP, 1-1-2  |
| Bemidji State . . . . .       | 2 GP, 0-2-2  | Northern Michigan . . . . . | 7 GP, 0-0-0  |
| Bowling Green State . . . . . | 8 GP, 2-0-2  | Notre Dame . . . . .        | 8 GP, 0-1-1  |
| Clarkson . . . . .            | 0 GP         | Ohio State . . . . .        | 7 GP, 0-1-1  |
| Colgate . . . . .             | 0 GP         | Western Michigan . . . . .  | 11 GP, 1-2-3 |
| Connecticut . . . . .         | 1 GP, 0-0-0  | Wisconsin . . . . .         | 1 GP, 1-0-1  |
| Lake Superior State . . . . . | 8 GP, 1-1-2  | Yale . . . . .              | 0 GP         |
| Miami (Ohio) . . . . .        | 5 GP, 0-2-2  |                             |              |
| Michigan . . . . .            | 7 GP, 1-2-3  | <b>POSTSEASON</b>           |              |
| Michigan State . . . . .      | 8 GP, 1-2-3  | CCHA Tournament . . . . .   | 8 GP, 1-2-3  |
|                               |              | NCAA Tournament . . . . .   | 2 GP, 0-0-0  |

### THE THOMSON FILE

#### IF I COULD MEET ANYONE IN HISTORY:

James Dean

#### MY PREGAME RITUAL:

Sleeping

#### MY WORST FEAR IS:

Snake Eyes & Box Cars

#### THE MOTTO I LIVE BY:

Dream as if you'll live forever,

Live as if you'll die today

#### SOMETHING UNUSUAL ABOUT ME:

I drive a Tempo

#### MY BEST NON-ATHLETIC TALENT:

Construction

#### THE MOST IMPORTANT THING I'VE LEARNED

##### AT FSU:

Giving up isn't an option!

#### MY FAVORITE MOVIE:

Dumb and Dumber

#### MOST MEMORABLE COLLEGE HIGHLIGHT:

2002-03 CCHA Super Six Championship game

#### FAVORITE NHL TEAM:

Toronto Maple Leafs

#### THE BEST PART OF BEING A FSU PLAYER:

Team unity

#### MY GOAL FOR THE 2004-05 SEASON:

Be a leader

#### MY FAVORITE THING ABOUT HOCKEY:

The competition

#### WHY I CHOSE FERRIS STATE:

Small town hockey atmosphere

