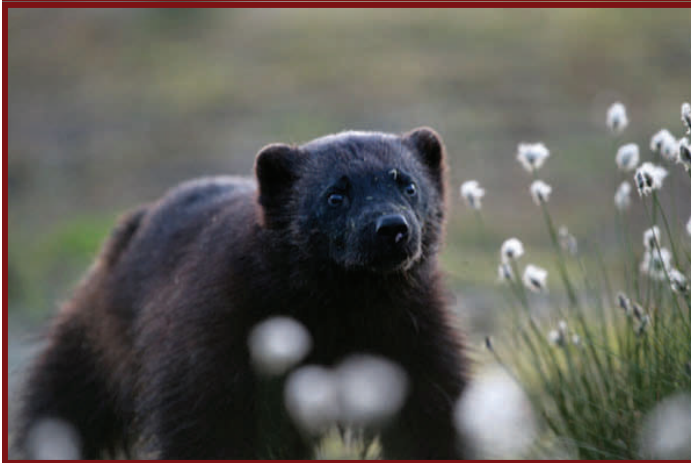




# WOLVERINE

*Gulo gulo*



The wolverine is a very large member of the weasel family. It has large clawed feet, which allows it to be a good winter predator. The wolverine is very territorial and is aggressive towards members of the same sex. A large part of its diet consists of carrion (dead animals). The wolverine does not have many natural predators other than the brown bear. Although Michigan is called the “Wolverine State,” there has only been one documented specimen in the last hundred years. This specimen was found in the winter of 2003 in the thumb of Michigan. Biologists are still uncertain of this lone wolverine’s origin.



## SPECIES QUICK FACTS

### SIZE

The wolverine is approximately 25 to 36 inches in length.

### WEIGHT

Wolverines typically weighs between 18 and 38 pounds.

### FOOD HABITS

The wolverine is a carnivore. It eats larger mammals such as squirrels, hares, deer, and carrion.

### HABITAT

The wolverine is found mainly in boreal forests and mountains. It can also be found on prairies.

### GEOGRAPHIC DISTRIBUTION

Wolverines range throughout Canada and Alaska and south into Washington, Idaho, and Montana. Their distribution once extended as far south as Colorado, Indiana, and Pennsylvania. Wolverines are also found in northern Europe and Siberia.

### FUN FACT

When feeding on prey, wolverines often eat the entire animal, including the hooves, bones, and hide.