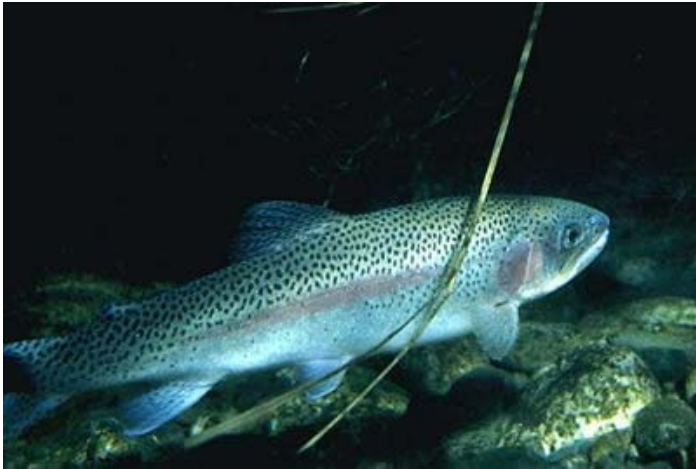




RAINBOW TROUT

Oncorhynchus mykiss



The rainbow trout is an aggressive game fish, favored by many anglers. In the Great Lakes, most rainbow trout can be found close to shore at depths of less than 35 feet, making them relatively easy to locate. Unlike salmon, rainbow trout do not die after spawning and may spawn two or three times during a lifetime. Today, rainbow trout spawn in the tributaries of Lake Superior and (less commonly) Lake Michigan.

SPECIES QUICK FACTS

SIZE

The rainbow trout is 20 to 30 inches long.

WEIGHT

The average weight of a rainbow trout is 2 to 8 pounds.

FOOD HABITS

Rainbow trout will eat insects, algae, crayfish, salamanders, eggs, fish, and small mammals.

HABITAT

The rainbow trout is a freshwater fish. It can be found in streams, rivers, and lakes.

GEOGRAPHIC DISTRIBUTION

Rainbow trout are native to the Pacific coast, and they have been transplanted to the central United States.

FUN FACT

When hooked, the rainbow trout will display an acrobatic fighting effort of continuous leaps that will break the surface of the water. This fish will continue to leap until it is eventually landed or manages to break free. This unique fighting style makes the rainbow trout one of the most popular freshwater fish among anglers.

