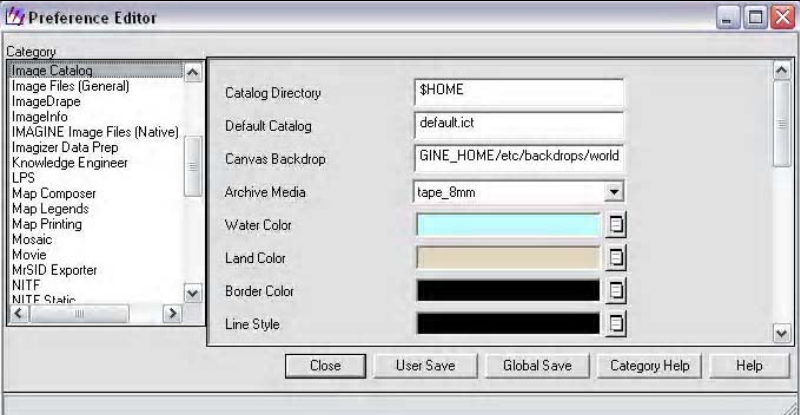


IMAGE CATALOG

SURE 339 – Remote Sensing

PREFERENCES WINDOW

- Select Session | Preferences to open Preference Editor



The screenshot shows a 'Preference Editor' window with a tree view on the left and a settings panel on the right. The 'Image Catalog' category is selected in the tree. The settings panel includes:

Setting	Value
Catalog Directory	\$HOME
Default Catalog	default.ict
Canvas Backdrop	GINE_HOME/etc/backdrops/world
Archive Media	tape_8mm
Water Color	[Cyan color swatch]
Land Color	[Tan color swatch]
Border Color	[Black color swatch]
Line Style	[Black line style swatch]

Buttons at the bottom: Close, User Save, Global Save, Category Help, Help.

CREATE IMAGE CATALOG

- Click Catalog icon on IMAGE icon panel to open Image Catalog



Image Catalog - SHOME/default.ict(:catalog)

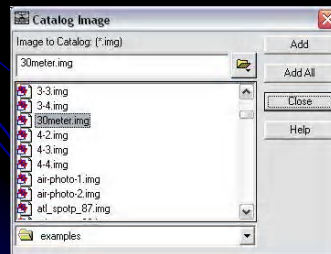
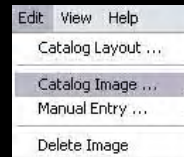
Record	Filename	Layers	Rows	Cols	Type	Pixel	Projection	Utlx
1	Catoblocks.img	3	500	400	athematic	unsigned 8-bit		
2	Icon_1M.img	6	509	650	athematic	unsigned 8-bit	UTM	-117.44
3	TM_imged.img	3	1001	601	athematic	unsigned 8-bit	Unknown	1460
4	airphoto-1.img	1	1110	1100	athematic	unsigned 8-bit	State Plane	-82.55
5	airphoto-2.img	1	1096	1090	athematic	unsigned 8-bit	State Plane	-82.53
6	baselines.img	1	512	512	athematic	unsigned 8-bit		
7	dimim.img	7	591	591	athematic	unsigned 8-bit	State Plane	1684646.25
8	eddiamimg	4	461	395	athematic	unsigned 8-bit	UTM	105.37
9	elkodem.img	1	461	395	athematic	unsigned 16-bit	UTM	105.37
10	foodplan.img	1	591	591	thematic	unsigned 4-bit	State Plane	1684646
11	gemimimg	6	1024	1024	athematic	unsigned 8-bit	State Plane	300000000001
12	hyperspectral.img	55	51	51	athematic	unsigned 8-bit	unknown	302
13	landcover.img	1	656	653	thematic	unsigned 4-bit	State Plane	1026710
14	lanes.img	7	512	512	athematic	unsigned 8-bit	UTM	300000000001
15	inspect.img	1	512	512	thematic	unsigned 16-bit	UTM	300000000001
16	lucmap.img	1	512	512	thematic	unsigned 32-bit	UTM	300000000001
17	lucmng	1	512	512	athematic	unsigned 16-bit	UTM	300000000001
18	lucydic.img	1	512	512	thematic	unsigned 4-bit	UTM	300000000001
19	lucles.img	1	512	512	thematic	unsigned 4-bit	UTM	300000000001
20	lucndc.img	1	512	512	thematic	unsigned 4-bit	UTM	300000000001
21	lucup.img	1	512	512	thematic	unsigned 4-bit	UTM	300000000001
22	lucpde.img	1	512	512	thematic	unsigned 8-bit	UTM	300000000001
23	lucpde.img	1	512	512	thematic	unsigned 8-bit	UTM	300000000001
24	lucobp.img	4	512	512	athematic	unsigned 8-bit		

ADD INFORMATION


- Click Edit | Catalog Image pull-down menu or select Add Image icon



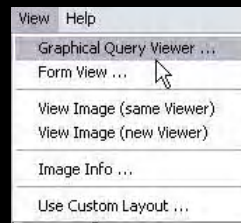
- Options in Edit pull-down menu:
- Catalog Image dialog opens



PERFORM GRAPHICAL QUERIES

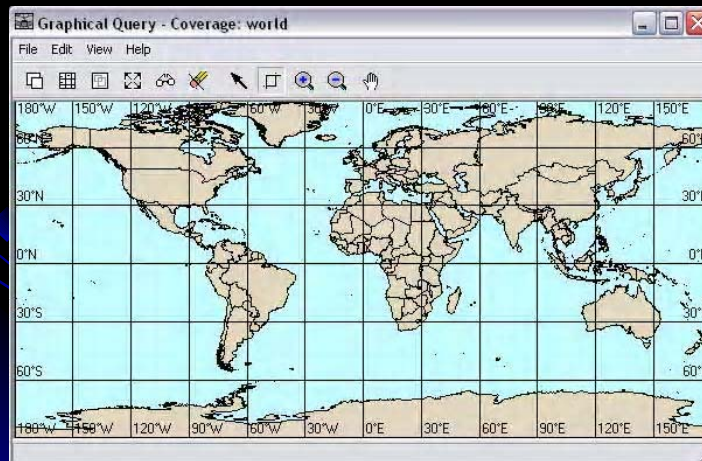
- Used to select area of map you want to query the images
- Click on View | Graphical Query Viewer pull-down menu or the Visual Query icon 

- View pull-down menu:



SELECT AREA

- Graphical query viewer



SELECT AREA

- Click on Select Area for Zooming icon to zoom into area
 - Area of interest fills window



RUN QUERY

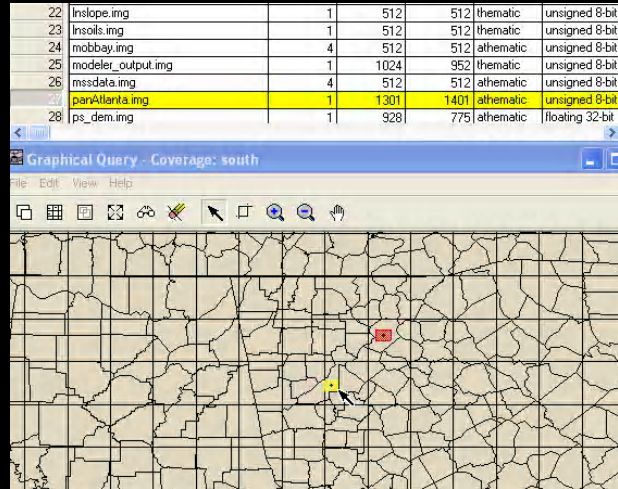
- Pick Query icon
 - Opens Image Catalog with designated query area highlighted in yellow



Record	Filename	Layers	Rows	Cols	Type	Pixel
1	ikon_1M.img	6	509	650	athematic	unsigned 8-bit
3	TM_striped.img	3	1001	801	athematic	unsigned 8-bit
4	airphoto_1.img	1	1110	1100	athematic	unsigned 8-bit
5	airphoto2.img	1	1096	1096	athematic	unsigned 8-bit
6	badlines.img	1	512	512	athematic	unsigned 8-bit
7	drain.img	7	591	591	athematic	unsigned 8-bit
8	edsoam.img	4	481	395	athematic	unsigned 8-bit
9	edsoam2.img	1	481	395	athematic	unsigned 16-bit
10	floodplain.img	1	591	591	thematic	unsigned 4-bit
11	genim1.img	6	1024	1024	athematic	unsigned 8-bit
12	hyperspectral.img	55	51	51	athematic	unsigned 8-bit
13	landcover.img	1	595	563	thematic	unsigned 4-bit
14	lunar.img	7	512	512	athematic	unsigned 8-bit
15	lraspect2.img	1	512	512	thematic	unsigned 16-bit
16	lrsamp.img	1	512	512	athematic	unsigned 32-bit
17	lrsdm.img	1	512	512	athematic	unsigned 16-bit

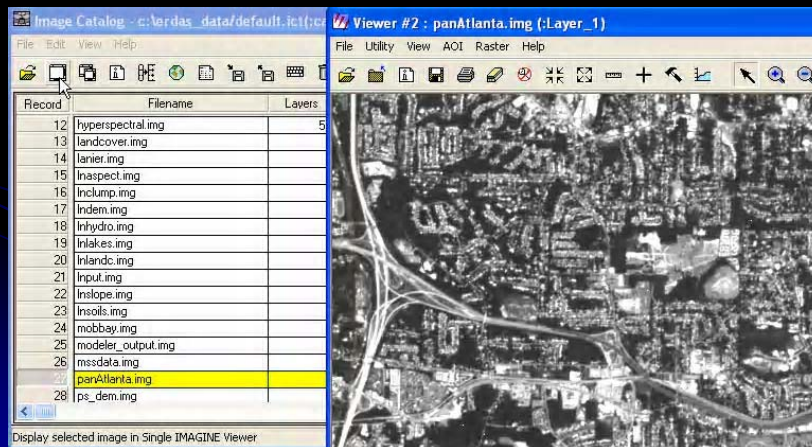
RUN QUERY

- Use select icon on yellow box and all other images in Graphical Query window turn red
- File name highlighted in Image Catalog



RUN QUERY

- Clicking on Display Single icon
- Displays image in a Viewer



RUN QUERY

- Display Another icon
 - Displays an image selected prior



To view information, click on Record number and file is highlighted

Image Catalog - c:\verdas_data/default.ict(\catalog)

Record	Filename	Layers	Rows	Cols	Type	Pixel
12	hyperspectral.img	55	51	51	athematic	unsigned 8-bit
13	landcover.img	1	556	563	athematic	unsigned 4-bit
14	lanier.img	7	512	512	athematic	unsigned 8-bit
15	lnaspect.img	1	512	512	athematic	unsigned 16-bit
16	lnclump.img	1	512	512	athematic	unsigned 32-bit
17	lnclump.img	1	512	512	athematic	unsigned 16-bit
18	lnhydro.img	1	512	512	athematic	unsigned 4-bit
19	lnlakes.img	1	512	512	athematic	unsigned 4-bit
20	lnlandc.img	1	512	512	athematic	unsigned 4-bit
21	lnput.img	1	512	512	athematic	unsigned 4-bit
22	lnslope.img	1	512	512	athematic	unsigned 8-bit
23	lnsoils.img	1	512	512	athematic	unsigned 8-bit
24	lnobbay.img	4	512	512	athematic	unsigned 8-bit
25	modeler_output.img	1	1024	952	athematic	unsigned 8-bit
26	msdsla.img	4	512	512	athematic	unsigned 8-bit
27	parAtlanta.img	1	1301	1401	athematic	unsigned 8-bit
28	ps_dem.img	1	928	775	athematic	floating 32-bit

VIEW INFORMATION

- Pick View | Form View pull-down or the Catalog Default icon
- Opens Form View dialog



Form View


File Data

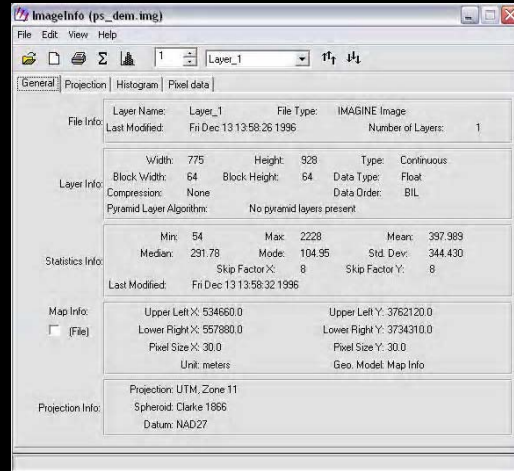
Image: ps_dem.img Rows: 928
 Type: athematic Cols: 775
 Projection: UTM Layers: 1
 Status: ONLINE Bits: floating 32-bit
 User: bin Date: 3/30/2003 10:50:00 AM
 Upper Left X: -116.62 Y: 34.00
 Lower Right X: -116.38 Y: 33.75
 Units: UTM
 Path: \\SIMAGINE_HOME\examples\

Archive Data

Label: Media:
 File Size: By:
 File Pos: Date:
 Location:
 Close Help

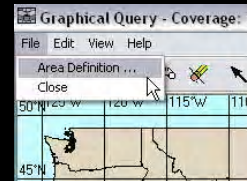
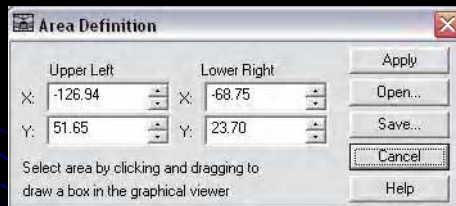
VIEW INFORMATION

- Image Info dialog opens from View | Image Info pull-down menu or clicking on Info icon 



MODIFY VIEWS

- Select File | Area Definition pull-down to open Area Definition dialog



- Can store extents of particular area of interest for quick retrieval

MODIFY VIEWS

- In Area Definition dialog, click on Save and the Defined Areas dialog opens

