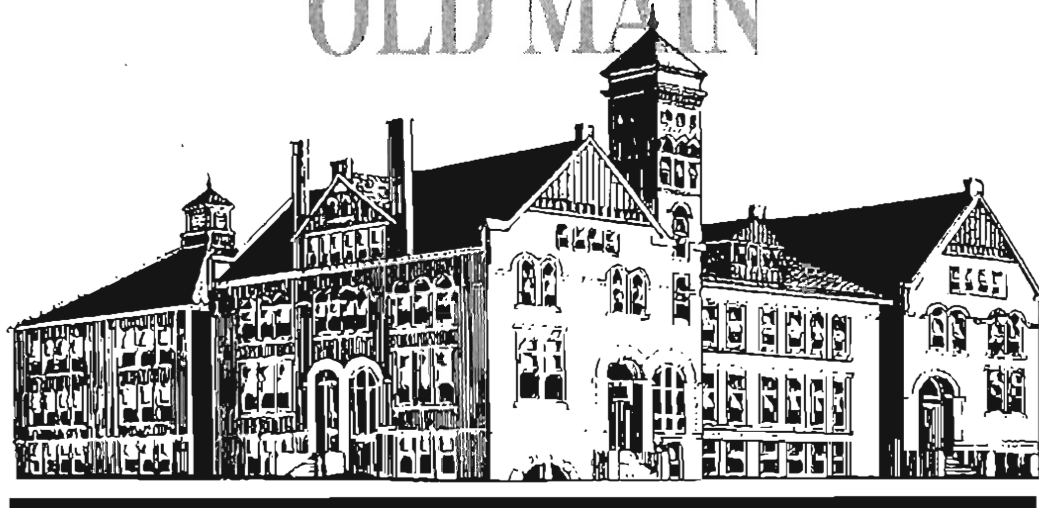


Fact Book

• 1993-94 •

OLD MAIN



January 1994

Dear Colleague:

The *Ferris State University Fact Book* is published for you, the students, faculty, staff, alumni, and friends of the University, who seek accurate information about Ferris. This project was conducted as a service to the university community by the Office of Institutional Studies. This third edition is a document that is designed to answer the most frequently asked questions about FSU.

It is with pleasure that we share the information with you. As a result of your edits to the document last year, we have added more information to the facts and figures section. We encourage you to review this work and solicit your suggestions for improvement of future issues.

Our appreciation is extended to the many offices which assisted us with the development of the information, including University Advancement's cover design. Special thanks go to Maureen Brockdorf and Nina Worth for their assistance in putting together this year's fact book.

Carol L. Maki
Director, Institutional Analysis

Mitzi A. Day
Data Analyst

Ferris State University
Office of Institutional Studies
Big Rapids, MI 49307
(616) 592-3801

TABLE OF CONTENTS

GENERAL INFORMATION

Statement of Mission	1
Facts and Figures:	
History/Campus Size/Academic Divisions/Semester Transition/Location	2
Educational Programs/Accreditation and Approval	3
Admissions/Student Costs	5
Financial Aid/Housing/Placement/Computer Facilities	6
Campus Media/Library and Instructional Services	7
Student Organizations/Athletics/Cultural Events	8
Lifelong Learning/Technology Transfer Center	9
Points of Interest	11
Gifts to the University	13
Ferris State University Calendar	14
Further Information	15
Educational Grants and Scholarships	16
MAGB Awards to Faculty and Students	20

STUDENTS/ENROLLMENT

Enrollment Listing of Resident Students by County	21
Enrollment Listing of Non-Resident Students by State	22
Total Headcount Enrollment, Fall 1965-1993	23
5-Year Headcount Enrollment Overview by College	24
Percent of Students by College	25
Comparative Enrollment Report by College	26
Enrollment by Age (Undergraduate Students Degree Seeking)	27
Enrollment by Age (Undergraduate Students Non-Degree Seeking)	28
Enrollment by Age (Graduate Students)	29
Enrollment by Age (First Professional Students)	30
Total Headcount Enrollment Compared to FTE	31
Student Credit Hour Production	32
Ethnic Distribution	33
Enrollment by Program (Allied Health Sciences)	34
Enrollment by Program (Arts & Sciences)	36
Enrollment by Program (Business)	38
Enrollment by Program (Education)	40
Enrollment by Program (Optometry/Pharmacy)	42
Enrollment by Program (Technology)	43

TABLE OF CONTENTS

DEGREES

Degrees Conferred by Program (Allied Health Sciences)	45
Degrees Conferred by Program (Arts & Sciences)	46
Degrees Conferred by Program (Business)	48
Degrees Conferred by Program (Education)	50
Degrees Conferred by Program (Optometry & Pharmacy) ..	51
Degrees Conferred by Program (Technology)	52
Summary of Degrees Conferred at FSU	54

FACULTY/STAFF

Full-Time University Staff by Job Category & Sex	55
Part-Time University Staff by Job Category & Sex	56
Total University Staff by Job Category & Sex	57
Distinguished Teacher Awards	58

ORGANIZATIONAL CHARTS

Board of Control	59
Board of Control/President	60
President	61
Office of Legal Affairs	62
Academic Affairs Division	63
Office of Academic Affairs	64
Academic Affairs Division/College of Allied Health Sciences	65
Academic Affairs Division/College of Arts & Sciences	66
Academic Affairs Division/College of Business	67
Academic Affairs Division/College of Education	68
Academic Affairs Division/Enrollment Services	69
Academic Affairs Division/ Lifelong Learning	70
Academic Affairs Division/Library	71
Academic Affairs Division/College of Optometry	72
Academic Affairs Division/College of Pharmacy ..	73
Academic Affairs Division/College of Technology	74
Business Affairs Division	75
Student Affairs Division	76
University Advancement Division	77

TABLE OF CONTENTS

ALUMNI

Alumni Listing by State	79
Summary of Placement Activity for 1991-92 Graduates	80
Beginning Salaries for Baccalaureate Graduates for 1991-92	81
Recipients of Alumni Awards	82

BUDGET

FY-94 General Fund Operating Budget	83
Revenue Summary	84
Expenditure Summary	85
Summary of 1993-94 Tuition Fees & Room/Board	86

FACILITIES

Summary of Facilities Owned or Rented by FSU(General Fund)	87
Summary of Facilities Owned or Rented by FSU(Non-General Fund)	88
Timme Library	89
Ferris State University Campus Map	90

General Information

STATEMENT OF MISSION

Ferris State University is Michigan's polytechnic university. Its mission is to teach students in a number of applied technology fields and in other selected professional fields where there is sustained and significant career potential. Ferris educates its students to be employable and capable of professional growth, and further, to contribute to their profession and to a constantly changing, global society.

Our Students

We are committed to providing our students with strong curricula emphasizing practical, usable skills blended with a relevant general education foundation. This is accomplished in a caring environment with personal attention and close faculty-student interaction. We offer educational opportunity, with an "open door" admission component, to a diverse array of students, including high school graduates, transfer students from other colleges and universities, as well as some non-traditionally prepared students. We also foster positive co-curricular experiences leading to a fulfilling student life.

Our Programs

We are committed to keeping our educational programs and services responsive to the changing needs of manufacturing, business, health care, and other industries and professions which are critical to Michigan's economy. We achieve this by actively fostering beneficial relationships with those who employ our graduates.

Our Employees

We are committed to high standards of performance and pride in accomplishment, with the understanding that the strength of our organization is our people. We embrace the concepts of equal opportunity, affirmative action, and cultural diversity. We encourage teamwork, professional growth, acceptance of responsibility, and recognition for achievement.

Our Communities

We are committed to being good neighbors with full participation in community life and community service. We share local access to educational experiences, business opportunities, cultural events, leisure pursuits, and a variety of other activities with our communities.

Our State

We are committed to contributing to the economic vitality of our State by providing a well-trained and educated work force. We are actively involved in applied research relative to the transfer, application and management of technology, and its relationship to our society.

GENERAL INFORMATION

FACTS AND FIGURES

HISTORY

Ferris State University is named for its founder, Woodbridge N. Ferris (1853-1928), a respected Michigan educator and statesman who served two terms as the governor of the state of Michigan and was elected to the United States Senate.

Founded in 1884 as a private institution by Mr. Ferris, the institution became affiliated with the state of Michigan in 1950, was named Ferris State College in 1963 by the Michigan Legislature, and obtained university status in 1987.

The University's founding concept of providing students with marketable skills, though intended at the time for individuals who had lost their jobs following declines in the lumber and mining industries, remains relevant in today's fast-changing society. A distinctive combination of academic programs and a continuing tradition of career-oriented education have made Ferris a nationally recognized leader in preparing men and women for useful careers and enlightened citizenship in numerous health, technical, educational, business and other professional fields.

CAMPUS SIZE 600 acres

ACADEMIC DIVISIONS College of Allied Health Sciences
 College of Arts & Sciences
 College of Business
 College of Education
 College of Optometry
 College of Pharmacy
 College of Technology

SEMESTER TRANSITION A transition from a quarter system to a semester system took place Fall, 1993.

LOCATION

The Ferris State University campus is located in Big Rapids, a west-central Michigan city of approximately 18,000 in the vacation-recreation region. The campus is readily accessible by the US-131 expressway and state highway M-20. Big Rapids is 54 miles north of Grand Rapids and within 200 miles of Chicago and Detroit.

In an effort to keep pace with changing needs and advances in technology, the Ferris campus has been updated and renovated over the years. The 600 acres of rolling hills along the western bank of the Muskegon River is dotted with 79 modern campus buildings.

EDUCATIONAL PROGRAMS

Ferris offers over 100 educational programs through the Colleges of Allied Health Sciences, Arts and Sciences, Business, Education, Pharmacy, Technology, and Optometry.

These offerings lead to bachelor's and associate degrees and certificates and also include doctorates in optometry and pharmacy and master's degrees in information systems management and career and technical education.

For the most part, each college encompasses a cluster of related programs which are targeted to prepare students for specific careers. The colleges operate in facilities which have been specially designed and equipped to support their missions.

Ferris is a national leader in the development of the concept of laddering, which enables students to advance their careers by building on previous training. For example, an individual who has gained employment after completing a two-year degree may later seek career advancement by returning to Ferris and earning a bachelor's degree. This concept also permits students to readily transfer into Ferris programs.

ACCREDITATION AND APPROVAL

Ferris State University is accredited by the North Central Association of Colleges and Schools, and is certified by the State Approval Agency of the Department of Education and the Veterans Administration for the education and training of veterans to attend Ferris under the provisions of Title 38, United States Code.

The National Accreditation Council for Environmental Health Curricula of the National Environmental Health Association has accredited the On-Campus Industrial and Environmental Health Program.

The American Medical Association's Committee on Allied Health Education and Accreditation has accredited the Medical Laboratory Technology, Medical Technology, Medical Record Technology, Medical Record Administration, Nuclear Medicine Technology, Radiography and Respiratory Therapy Programs.

The American Dental Association Commission on Dental Accreditation has accredited the Dental Hygiene and Dental Technology programs.

The associate degree nursing program is accredited by the Michigan State Board of Nursing. The Bachelor of Science in nursing program is accredited by the National League for Nursing.

The North Central Regional Accrediting Committee of the American Nurses Association has accredited the Nursing Continuing Professional Educational program.

The Accounting program is accredited by the State Board of Accountancy.

The American Bar Association has accredited the Legal Assistant program.

GENERAL INFORMATION

The Optometry Doctoral (O.D.) Program and the Optometric Technician Program are accredited by the Council on Optometric Education. The Opticianry Program is accredited by the Council on Opticianry Accreditation.

The National Academy of Opticianry has accredited the Opticianry Program.

The Pharmacy Program is accredited by the American Council on Pharmaceutical Education.

The Surveying Program has been accredited by the Related Accreditation Commission of the Accreditation Board for Engineering and Technology; and approved by the Michigan State Board of Registration for Architects, Engineers and Professional Land Surveyors.

All Teacher Education Programs are approved by the Michigan Department of Education.

ADMISSIONS

Ferris State's diverse curricula allows it to maintain the tradition of admitting most mature, serious-minded applicants. Admission to certain programs must depend upon consideration of the applicant's qualifications for such a program. Specific program requirements are listed in the University catalog.

STUDENT COSTS

The average annual cost for a Michigan resident to attend Ferris (based upon 1993-94 rates), including tuition, room and board, fees, and estimated academic and personal expenses, is \$8,675.

1993-94 Costs	Semester	Year
Undergraduate (Michigan resident)		
Tuition (12-16 credit hours)	\$1,611.00	\$3,222.00
Room and Board (7-day plan)	\$1,961.00	\$3,923.00
Sub Total	\$3,572.00	\$7,145.00
Books and Supplies (estimate)	\$270.00	\$540.00
Personal Expenses (estimate)	\$525.00	\$1,050.00
Refundable Fees	\$15.00	\$30.00
Michigan Undergraduate Total Expenses (estimated)	\$4,382.00	\$8,765.00
Undergraduate (non-resident)		
Tuition & Fees	\$3,263.00	\$6,526.00
Part-time Student (1-11 credit hours)		
Michigan Tuition	\$135 per credit hour	
Non-Resident Tuition	\$272 per credit hour	
Graduate Student		
Michigan Tuition	\$174 per credit hour	
Non-Resident Tuition	\$348 per credit hour	
Professional School Tuition (Doctor of Optometry & Doctor of Pharmacy)		
Michigan Resident	\$3,364/semester	\$6,728/year
Non-Resident	\$6,806/semester	\$13,612/year
Family Apartments		
One Bedroom	\$310 per month	
Two Bedroom	\$330 per month	
Alternate Meal Plan		
Room and Board (5-day plan)	\$1,830.50	\$3,661.00
13 meal flex plan	\$1,875.50	\$3,751.00

CAMPUS MEDIA

Ferris offers students a variety of media, including a campus newspaper, radio station and local cable system (channel 7).

The Torch, which is published twice weekly, informs students of University news, events, and other related campus issues. WFSU is the student radio station which transmits on the campus cable system. FSU-TV Cable 7 serves the campus and community with educational and public service television programming.

The *FYI* is an internal newsletter published weekly for faculty and staff, and the *Alumni Bulletin*, published three times yearly, is aimed at keeping alumni informed of campus events. Some of the colleges and programs on campus also publish their own alumni publications.

LIBRARY AND INSTRUCTIONAL SERVICES (LIS)

Serving all areas of the University, library and instructional services (LIS) offers access to more information from different sources on site and around the world in varying formats than ever before. Graduating from Ferris with a knowledge of how to find necessary information to solve problems is critical to becoming a contributing professional and citizen in a continuously changing global, pluralistic and technological information-based society.

The University library system, which consists of the Abigail S. Timme Library and a branch facility, the Health Sciences Library, houses a collection approaching three quarters of a million books, periodicals, Michigan and U.S. government documents, research reports, audio-visual and other materials. The libraries' holdings are integrated by format, and linked electronically through the online public access catalog (OPAC). The local area network (LAN) hosts an expanding collection of locally loaded commercial databases. Searching these sources is a viable option in various microcomputer labs and offices located around campus.

The Timme Library is a depository for U.S. Bureau of Census and State of Michigan publication, and shares this status with Northwestern Michigan College for other federal documents. It also is designated a Patent and Trademark Depository Library. The Timme Library, moreover, houses the campus libraries' media collection and a microcomputer laboratory in an area called the Individualized Learning Center (ILC). The University Archives contains materials related to Ferris State University's history as well as official records and faculty publications.

Electronic access to the University's library collections as well as those of a growing number of other institutions in the northwest quadrant of lower Michigan is made possible through FerrisNet, which was established to foster interlibrary cooperation. The University is a member of MichNet and Internet, and as a subscriber to OCLC and its document delivery system, the Ferris library system is connected to more than 14,000 national and international libraries/information centers.

The office of the arts, which coordinates the University's cultural goals and Art In Public Places program, annually hosts the "Festival of the Arts," a month-long celebration featuring visiting artists, writers, arts presentations, workshops, lectures and other cultural events.

Three outdoor sculptures are on display on campus: "I'm Late," an abstract metal work; a bronze centennial memorial statue of founder Woodbridge N. Ferris; and a large welded steel Bulldog, a rendition of the FSU athletic mascot. A bust of Ferris is on display in the Starr Educational Center in the G. Mennen Williams Auditorium lobby.

LIFELONG LEARNING

Lifelong Learning provides a wide range of continuing education and public service programs, conducted both for credit and non-credit, enabling many adults and youths to keep abreast of changes in their field of interest. Ferris offers a variety of conferences, institutes, seminars and workshops ranging from one day to three weeks in length. Opportunities for participation in nationwide teleconferences and telecourses are also provided.

The Evening College program is offered for area residents unable to attend college on a full-time basis, who wish to pursue a degree or take classes for personal growth. Lifelong Learning provides logistical support for Ferris summer school programs.

Off-campus degree programs in selected curricula are offered at strategic sites throughout the state and are designed to meet the needs of the adult learner. Ferris off-campus programs are offered in cooperation with the academic colleges through Regional Centers in Grand Rapids, Traverse City and Flint.

Business, industrial and labor education needs are served through customized training seminars. Faculty/trainers have industry-specific experience, offering valuable resources to training projects. Grant programs can provide assistance to qualifying industries.

Lifelong Learning serves a large number of people in its public service role. The Business Development Center, the Senior Employment Program, the Learning/Nutrition Project, and Adult Enrichment activities all exist to help their constituents in a variety of ways.

TECHNOLOGY TRANSFER CENTER

Technology Transfer Center (TTC) is a department of the College of Technology which develops technical services and training opportunities for clients of the University. Services available through the TTC mirror the technical programming of the major degree programming areas within the College of Technology. Assistance is provided on a project-by-project basis through three TTC service divisions; Technical Services, Technical Training, and Entrepreneurial Services.

GENERAL INFORMATION

The skills and knowledge of College of Technology faculty are one reason TTC has served as a respected provider of essential services to over 900 manufacturing and technical service sector companies since 1984. The expertise of faculty, staff and senior level students are utilized to assist Michigan's manufacturing and commercial-industrial community. TTC technical services include ISO-9000 and quality improvement, cost reduction programs, product design assistance, on-site plant floor problem solving, plant layout design for synchronous manufacturing, automation design, project management, and state-of-the-art rapid prototyping. TTC custom technical training services include (but not limited to) plastics technology, building and highway construction quality, quality systems, welding technology, machine tool theory and practice, and CAD design.

TTC also specializes in the development of industry-specific training partnership programs through its highly successful Training Institute program. Partnerships between TTC and state agencies and associations include: Michigan Asphalt Paving Association, Michigan Mineral Resources Association, Michigan Department of Transportation, West Michigan Office Furniture Council, Greater Grand Rapids Manufacturers Association, Mecosta County Chamber of Commerce, Industrial Technology Center (Ann Arbor), Midwest Manufacturing Technology Center (NIST), Research and Technology Institute (Grand Rapids), and West Central Michigan Defense Procurement Center. TTC also has national partnerships with the Air Conditioning Contractors of America and the Management Association of Private Photogrammetric Surveyors.

Technology Transfer Center is located at 1020 East Maple Street near the Big Rapids Industrial Park, and at the Applied Technology Center in Grand Rapids, Michigan. Phone: 616-592-3774, Fax: 616-796-1448.

POINTS OF INTEREST

Alumni Building (1929) - The oldest building on campus, it contains administrative offices, classroom instruction and recreation facilities.

Automotive Center (former Technical and Applied Arts Center) (1956) - Comprises the instructional and lecture facilities for automotive services, automotive body, automotive machine, and auto and heavy equipment management. Several of the automotive programs offer associate and bachelor degrees.

Business Building (1970) - Houses the auditorium, classrooms and offices of the College of Business. Extensive terminal and mainframe computer facilities include one of the state's largest "library concept" microcomputer laboratories used for educational purposes.

Bishop Hall/College of Education (1967) - Built as a residence hall, it was remodeled in 1986 to house the College of Education administrative offices and classrooms as well as such programs as Collegiate Skills and Intensive English.

Holiday Inn Hotel and Conference Center (1993) - The facility is located adjacent to the Katke Golf Course and overlooks the campus. The complex houses 16,772 square-feet of meeting facilities, 118 guest rooms, banquet facilities and a restaurant. The conference facilities are used for continuing education activities, conferences and workshops.

Construction Technology Center (1962) - Provides lecture facilities for the energy systems technology and construction engineering technology program areas.

Heavy Equipment Technology Building (1987) - A 52,000-square-foot building accommodating students in the heavy equipment and auto programs. The HET building is the largest facility in the country dedicated to training heavy equipment and heavy duty engine technicians.

Ewigleben Sports Complex - Comprises two indoor ice rinks and a recreational wing with facilities for intercollegiate hockey, recreational hockey and skating, basketball, and volleyball, all completed in 1975. An addition completed in 1981 includes a combatives room, fitness and sports medicine facilities and a mini-arena.

Katke Golf Course (1975) - An 18-hole golf course on campus, it is used for instructional, athletic and recreational purposes.

Pennock Hall/College of Optometry (1968) - Built as a residence hall, it was renovated in 1977 to serve as the permanent home for the College of Optometry.

Pharmacy Building (1972) - Designed to house all operations of the College of Pharmacy, including specialized laboratories and the model pharmacy, and also contains an antique pharmacy exhibit.

Plastics Engineering Technology Center (1987) - Built with funds provided by the plastics industry, the center offers hands-on training in plastics processing, tool design and tool building, quality control and material and product testing.

GENERAL INFORMATION

Racquet Facility (acquired in 1980) - The facility contains tennis and racquetball courts and weight lifting and aerobics facilities for intramural and intercollegiate athletics and is open to the general public as well.

Rankin Center (1957) - Remodeled and updated in 1987, it is the hub of campus, housing the James L. Lundberg Bookstore, recreational facilities, offices for the student newspaper, student government and various other student organizations, catering/booking offices and the Ferris Art Gallery. On the administrative side, there are offices for minority affairs, student judicial services, student activities, career planning and placement, personal counseling, the vice president for student affairs and the dean of student life. Additional services include three dining facilities, meeting rooms and a large ballroom/banquet room.

Spathelf Center for Allied Health (1979) - This four-level structure contains the specialized classrooms, laboratories and offices for the students, faculty and administration of the College of Allied Health Sciences.

Starr Educational Center (1961) - Provides classrooms and offices for the College of Arts and Sciences and houses the G. Mennen Williams Auditorium, seating 1,700.

Swan Technical Building (1968) - This five-story academic structure houses the majority of programs in the College of Technology, including the electronics, construction, graphic arts and manufacturing departments, along with CAD-CAM labs serving more than 2,000 students, automation labs and a resource center.

Technology Transfer Center (TTC) (donated in 1984 by Hitachi Metals International) - This 9,000-square-foot building located off campus on Big Rapids' east side contains a fully equipped machine shop, computer laboratory including computer aided design stations, classrooms, a conference room and offices. (see separate section on the Center's function)

Tot's Place (instituted 1987) - Located on the first floor of Bishop Hall, it is the laboratory for the child development program. Tot's Place provides child care for children of students and faculty as well as Big Rapids community residents.

GIFTS TO THE UNIVERSITY

Directed by the volunteer efforts of the Development Council and Ferris faculty and staff, private giving to the University in fiscal year 1993 totaled \$2,267,554 including cash contributions of \$1,015,226 and in-kind gifts of approximately \$1,252,328.

Contributions may be made in several ways:

- Phoenix Society: \$100,000 in cash or in-kind gifts or \$150,000 in deferred giving (individuals or companies);
- Phoenix Society Associates: \$50,000 cash or \$25,000 cash with acceptable plan to reach \$50,000 (individuals only);
- President's Club: \$10,000 in cash or in-kind gifts payable over a 10-year period, or a \$35,000 life insurance policy;
- Endowment Society (for those who have named Ferris as a beneficiary in their estate plans, trusts, etc.);
- Fund for Excellence annual giving clubs: Century Club (\$100-\$499), University Club (\$500-\$999), Woodbridge N. Ferris Society (\$1,000+);
- Annual giving clubs for gifts restricted to an academic area or program: Dean's Club Associates (\$100-\$499), Dean's Club (\$500+);
- Annual gifts under \$100;
- Gifts from parents and alumni;
- Gifts from business and industry, including donations of equipment and materials, consignments, and matching of employee financial gifts;
- Foundation support;
- Memorials and tributes;
- Athletic Associates (\$50-\$450).

GENERAL INFORMATION

FERRIS STATE UNIVERSITY CALENDAR

Fall Semester, 1993-94

Aug. 26-27	Registration
Aug. 30	Classes begin
Sept. 6	Labor Day (no classes)
Sept. 7	Classes resume
Nov. 25	Thanksgiving recess begins
Nov. 29	Classes resume
Dec. 10	Last day of classes
Dec. 18	Fall Commencement

Winter Semester, 1994

Jan. 6-7	Registration
Jan. 10	Classes begin
Jan. 17	Martin Luther King Day (no classes)
Jan. 18	Classes resume
Mar. 5	Spring recess begins
Mar. 14	Classes resume
Mar. 31	Easter recess begins
Apr. 4	Classes resume
Apr. 29	Last day of classes
May 7	Spring Commencement

First Summer Session

May 16	Registration
May 17	Classes begin
May 30	Memorial Day (no classes)
May 31	Classes resume
Jun. 28	Last day of classes

Second Summer Session

Jun. 28	Registration
Jun. 29	Classes begin
Jul. 4	Fourth of July (no classes)
Jul. 5	Classes resume
Aug. 10	Last day of classes

FURTHER INFORMATION

Address all correspondence to the appropriate individual or department at: Ferris State University, 901 S. State Street, Big Rapids, MI 49307.

The telephone number for the Ferris State switchboard is (616) 592-2000, and the telephone operator can assist you. Most colleges, departments and offices also have their own numbers. Some frequently called numbers are listed below:

Academic Deans Offices

College of Allied Health Sciences	592-2269
College of Arts and Sciences	592-3661
College of Business	592-2422
College of Education	592-3648
College of Optometry.....	592-3703
College of Pharmacy	592-2254
College of Technology	592-2898

Student Services

Admissions	592-2100
Assessment Services & Enrollment Research....	592-3628
Business Office	592-2125
Career Planning/Placement Services.....	592-2685
Financial Aid.....	592-2110
Orientation.....	592-2105
Registrar.....	592-2790
Residential Life (Housing)	592-3745

General

Alumni relations	592-2346
Athletic department.....	592-2860
Library	592-3602
Lifelong Learning	592-2340
Public Safety	592-5000
Rankin Center.....	592-5916
Student activities	592-5936
University Advancement.....	592-3815

EDUCATIONAL GRANTS AND SCHOLARSHIPS

FEDERAL

- The Federal Pell Grant
- The Supplemental Educational Opportunity Grant

STATE

- The Michigan Educational Opportunity Grant Program
- The Michigan Adult Part-Time Grant Program

INSTITUTIONAL

Woodbridge N. Ferris Scholarship Program:

- Founder's Scholarship
- President's Scholarship
- Dean's Scholarship
- Ferris Academic Opportunity Scholarship
- Valedictorian/Salutatorian Award
- Kelso Battle Scholarship
- Community College Transfer Scholarship

Institutional Grants and Scholarships:

- Administrative Management Society Junior Standing Achievement Scholarship
- Alumni Scholarship
- American Society for Quality Control Scholarship
- Architectural Building Products Scholarship
- ASHRAE - American Society of Heating, Refrigeration and Air Conditioning Engineers
- Tommy Armour Golf Company Scholarship
- The Blanche E. Arnold Scholarship
- Athletic Grants
- Bausch & Lomb "Contact with the Future" Educational Travel Grant
- Bausch and Lomb Excellence in Academic Achievement Scholarship
- Helen Bennett Memorial Award
- Ken Betz Automotive Service Scholarship
- Owen Bieber Scholarship
- Thomas Bingman Memorial Scholarship
- George Marcus Bowlby Scholarship for Non-traditional Students
- Butler Paper Scholarship
- Cascade/Paragon Scholarship
- John Celestino Endowed Scholarship
- Brian Chapman Memorial Professional Golf Management Scholarship

EDUCATIONAL GRANTS AND SCHOLARSHIPS

INSTITUTIONAL, CONT.

The Elizabeth Claucherty Endowed Scholarship
College of Business Memorial Scholarship Fund
The Orrin B. Davenport Scholarship
The William Deck Scholarship Fund
The William E. Dengler Memorial Pharmacy Scholarship
Dental Hygiene Alumni Scholarship
DOW-ICT Scholarship
Gregory Dreuth Memorial Scholarship
Ewigleben International Student Endowed Scholarship
The Dean and Mrs. Ben Fairman Scholarship Fund
The Federated Garden Clubs of Michigan Scholarship
Ferris Grants-in-Aid
Phil Flanders Plastics Brotherhood Association Scholarship
The C. Jerry Ford and Mary E. Ford Memorial Scholarship
FSU Dining Service Scholarship
The Ernie Fuller Scholarship
Seymour Galina Grant
Debbie Garner Memorial Scholarship
Golf Manufacturers and Distributors Association Scholarship
The James A. Gould Memorial Pharmacy Student Assistance Fund
The Richard G. Hallisy Student Assistance Fund
Charles Hampton Memorial Endowed Scholarship
Handicapped Student Scholarship
Head Golf Scholarship
The Kurt Hellthaler Endowed Memorial Ophthalmic Dispensing Award
Hoexum Scholarship
Orville C. Hoffman, Jr. Endowed Scholarship
George N. Holcomb Memorial Scholarship Fund
Hurst Mechanical, Inc./Refrigeration Engineering, Inc. Scholarship
Independent Printing Co., Inc. Annual Scholarship
Ingersoll-Rand Heavy Equipment Technology Scholarship
Instrument Sales and Service Scholarship
The Jerry Jourdain Endowed Memorial Scholarship
W. C. Judson Endowed Scholarship
Gordon Kamstra Memorial Endowed Scholarship
The Fred W. Kellogg Scholarship
The Maude Korstange Scholarship
Richard S. Labroff Endowed Scholarship
Jack and Karen LeBarre Scholarship
Thomas F. Love Endowed Swimming Scholarship

GENERAL INFORMATION

EDUCATIONAL GRANTS AND SCHOLARSHIPS

INSTITUTIONAL, CONT.

The Ruby MacNeill Endowed Memorial Scholarship
Donald and E. Lyle Magee Scholarship
Dr. Vijay Mahida Surveying Scholarship
Stephen Edward Martin Memorial Award
The Jack Marvel Surveying Scholarship
The Julia B. McCormick Scholarship Fund
Michigan Association of Commercial Dental Labs Scholarship
Michigan Auto Parts Association Scholarship
Michigan Construction Equipment Dealers Association Scholarship
Michigan Optometric Association Auxiliary Scholarship
Michigan Society of Registered Land Surveyors Scholarship
Colonel Charles A. Mount and Dorothy Mount Memorial Scholarship
The Nordman Foundation Scholarship
Northamerican Heating and Air Conditioning Association Scholarship
Outer Drive Hospital Auxiliary Scholarship
Warren C. and Beverly A. Parker Scholarship Endowment
PGA Foundation Scholarship for Minority Students
Prakken Scholarship
The David P. Prior Scholarship
The Progressive Engineering Consultants of Grand Rapids, Inc.
Scholarship
The Allen Puterbaugh Scholarship
Mylo Ragan Endowed Scholarship
The Rautiola/Nartron Tennis Scholarship
Geff Reinke Endowed Scholarship
Vincent J. Salierno Scholarship
Joseph D. Sasaki Scholarship Fund
Donald G. Saum Surveying Scholarship
Sarah Shell Scholarship Award
Mike Shira Health Systems Management Scholarship
Silhouette Optical Student Grant Program
John R. Smith Memorial Endowed Leadership Scholarship
Victor and Mercedes Spathelf Scholarship
Special Ability-Based Scholarship
SPE South Florida Section Scholarship
Harry S. Swartz Pharmacy Administration Award
Surveying Advisory Committee Scholarship
Walter J. Stevenson Scholarship Fund
James Stewart Memorial Fund Scholarship

EDUCATIONAL GRANTS AND SCHOLARSHIPS

INSTITUTIONAL, CONT.

Anne Szabunia Memorial Scholarship
Fred E. Taylor Endowed Scholarship
Jon C. and Margaret A. Taylor Student Assistance Fund
Tenth Congressional District Scholarship
C. Alan Tressler Memorial Scholarship Fund
Daniel Tyler Scholarship
Upjohn Biotechnology Control Scholarship and Internship
Upper Division Academic Scholarship
Urban Land Consultants Scholarship
Varilux II Student Grant
The Helen Ferris Vartan Scholarship Fund
Vision Service Plan Scholarship
WBDC Incorporated Scholarship
The Dr. Andrea L. Warfield Memorial Endowed Scholarship
Wayne County Society of Optometrists Scholarship
West Central Chapter of the Michigan Society of Registered Land
Surveyors Scholarship
Dean A. Whitehead Memorial Scholarship
Robert F. Williams Scholarship
Wyatt Cafeterias Endowed Scholarship Fund

Source: 1993-1995 School Bulletin

GENERAL INFORMATION

MICHIGAN ASSOCIATION OF GOVERNING BOARDS

The Michigan Association of Governing Boards (MAGB), an organization of the governing bodies of the thirteen State-supported colleges and universities of Michigan, has, since 1982, been hosting an awards convocation and dinner to honor students and faculty of member institutions for scholarly activity and public service.

Ferris State Faculty Honored Include:

1982	Gerald E. Lowther	Optometry
1982	Richard A. Santer	Arts & Sciences
1983	Herbert L. Carson	Arts & Sciences
1983	Nancy P. Uniacke	Optometry
1984	Everett J. Nienhouse	Arts & Sciences
1984	Ann Marie Remp	Business
1985	Ada Lou Carson	Arts & Sciences
1985	Robert E. Friar	Arts & Sciences
1986	Mary L. McCorriston	Arts & Sciences
1986	Michael E. Ryan	Arts & Sciences
1987	Charles R. Hurt	Arts & Sciences
1987	Mark L. Pletz	Optometry
1988	Robert J. Krueger	Pharmacy
1988	Rose Ann Swartz	Business
1989	Richard Pisacreta	Arts & Sciences
1989	Katherine Manley	Education
1990	Robert C. Ferguson	Arts & Sciences
1990	J. James Saladin	Optometry
1991	John P. Caserta	Arts & Sciences
1991	Gary C. Horn	Arts & Sciences
1992	Phillip Sterling	Arts & Sciences
1992	Elizabeth Turpin	Arts & Sciences
1993	Mark Curtis	Technology
1993	Marilyn Gillette	Arts & Sciences

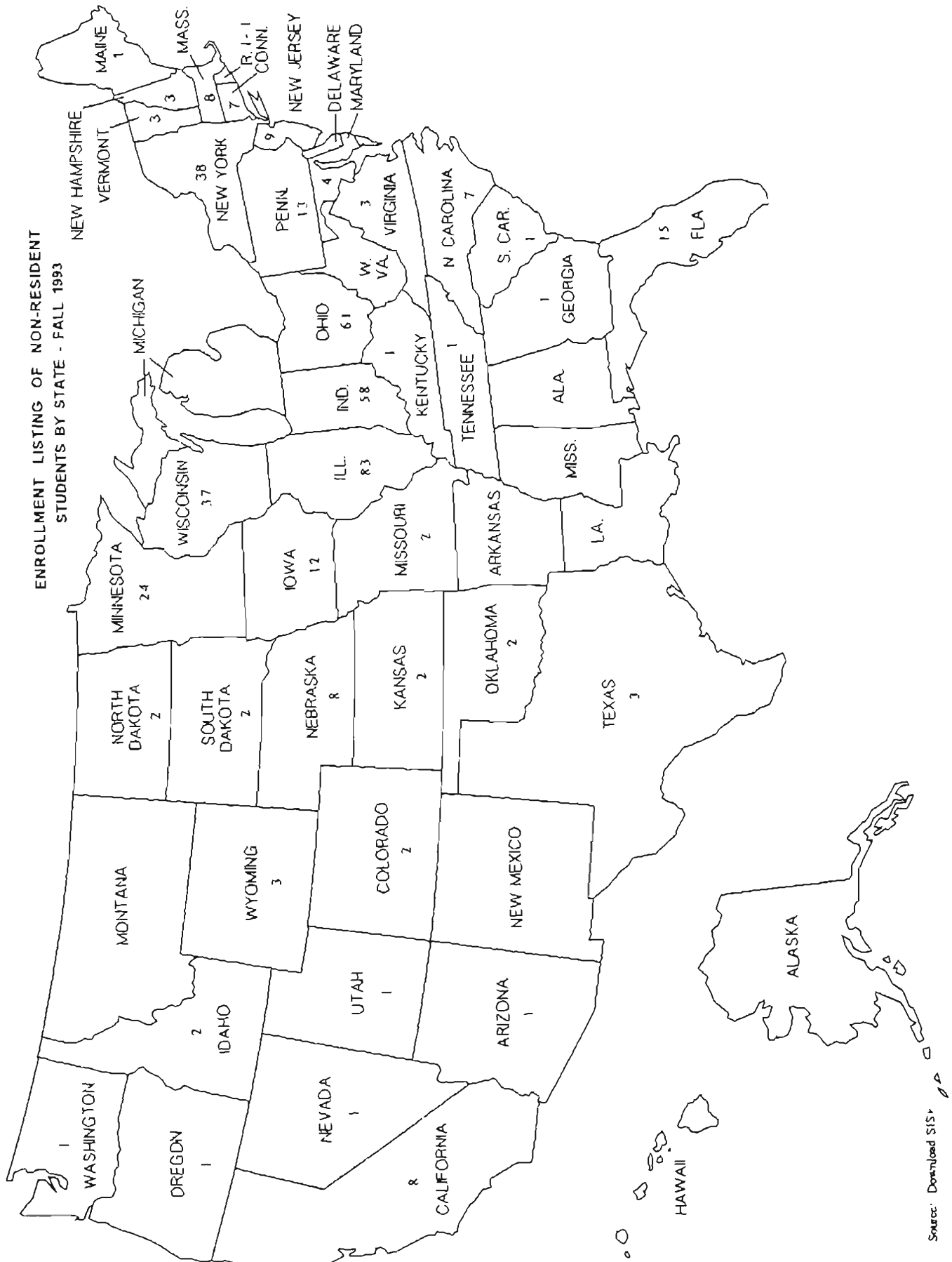
Student Recipients:

1982	Pamela Sue Fitch	Allied Health
1982	Steven Mark Harvey	Business
1983	Douglas Totten	Optometry
1983	Beth Trombley	Pharmacy
1984	Michele Behne	Arts & Sciences
1984	Kevin Lokar	Arts & Sciences
1985	David Gough	Business
1985	Kathleen Spuller	Arts & Sciences
1986	Bradford Krueger	Arts & Sciences
1986	Diedre Nordlund	Pharmacy
1987	Ann Marie Willson	Pharmacy
1987	Mark Swan	Optometry
1988	Earl Heron	Technology
1988	Patricia Hoard	Optometry
1989	Lee Peplinski	Optometry
1989	Lisa Kluetz	Pharmacy
1990	Mary Jo Horn	Optometry
1990	David J. Miller	Pharmacy
1991	Alan R. Hopkins	Technology
1991	Brenda L. Spedowski	Business
1992	Jane A. Tughan	Allied Health Sciences
1992	Thomas C. Dowling	Pharmacy
1993	Steven Frederickson	Technology
1993	Ann Marie Boyke	Optometry

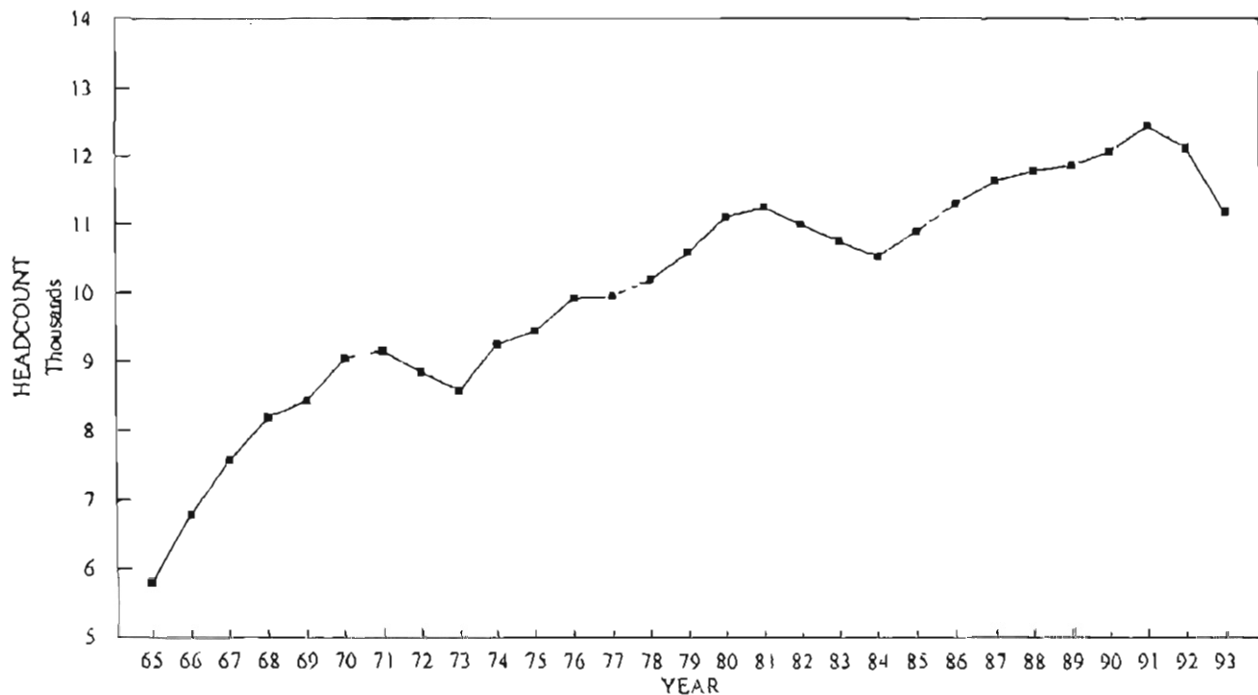
Source: Office of Academic Affairs

Students/Enrollment

STUDENTS/ENROLLMENT



TOTAL HEADCOUNT ENROLLMENT

TOTAL HEADCOUNT ENROLLMENT
FALL ENROLLMENT

1965	5,787	1979	10,596
1966	6,801	1980	11,112
1967	7,581	1981	11,261
1968	8,200	1982	11,008
1969	8,439	1983	10,767
1970	9,057	1984	10,540
1971	9,161	1985	10,909
1972	8,864	1986	11,310
1973	8,584	1987	11,643
1974	9,264	1988	11,792
1975	9,460	1989	11,878
1976	9,934	1990	12,076
1977	9,965	1991	12,461
1978	10,208	1992	12,134
		1993	11,188

Source: Fall Quarter/Semester Enrollment Report - changed to semesters Fall 1993

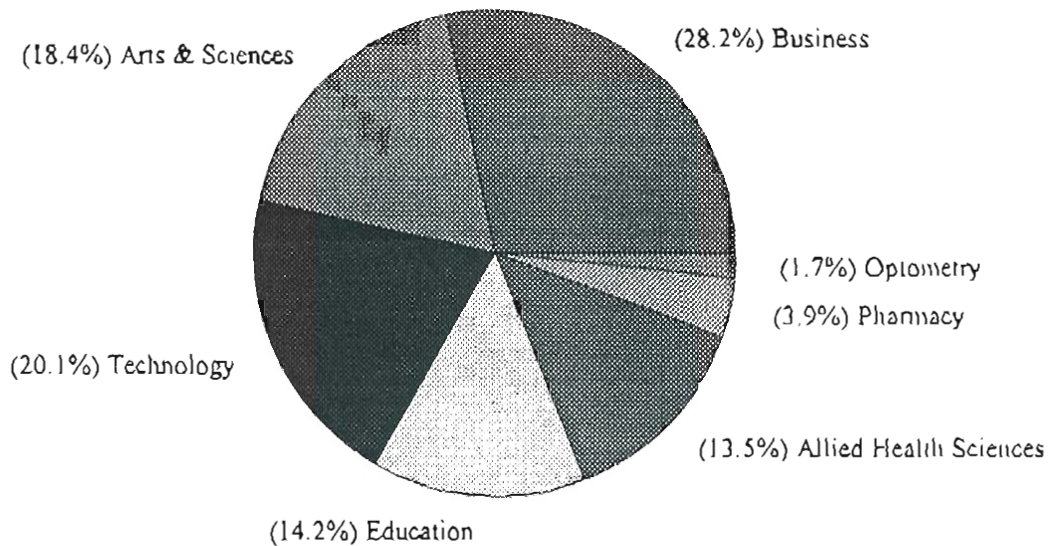
Office of the Registrar

FERRIS STATE UNIVERSITY 5-YEAR HEADCOUNT ENROLLMENT OVERVIEW BY COLLEGE FALL TERM

COLLEGE	1989-90	1990-91	1991-92	1992-93	1993-94
ALLIED HEALTH SCIENCES	968	1,082	1,302	1,495	1,514
ARTS & SCIENCES	2,471	2,469	2,299	2,230	2,054
BUSINESS	4,298	4,336	4,384	3,864	3,151
EDUCATION	1,255	1,389	1,547	1,651	1,592
OPTOMETRY	297	169	174	187	186
PHARMACY	380	390	420	427	437
TECHNOLOGY	2,209	2,241	2,335	2,280	2,254
TOTAL	11,878	12,076	12,461	12,134	11,188

Source: Fall Quarter/Semester Enrollment Report
Office of the Registrar
(89-90 thru 92-93 - Quarter System; 93-94 - Semester System)

PERCENT OF STUDENTS BY COLLEGE FALL SEMESTER 1993



STUDENT ENROLLMENT BY COLLEGE

BUSINESS	3,151
ARTS & SCIENCES	2,054
TECHNOLOGY	2,254
EDUCATION	1,592
ALLIED HEALTH SCIENCES	1,514
PHARMACY	437
OPTOMETRY	186
TOTAL	11,188

Source: Fall Semester Enrollment Report
Office of the Registrar

COMPARATIVE ENROLLMENT REPORT BY COLLEGE

COLLEGE	MEN	WOMEN	1993 TOTAL	1992 TOTAL
BUSINESS	1,860	1,291	3,151	3,864
Masters Degree	37	17	54	44
Bachelor Degree	1,653	947	2,600	3,275
Associate Degree	134	290	424	545
Undeclared Major	36	37	73	
ARTS & SCIENCES	1,002	1,052	2,054	2,230
B.S. Degree	126	261	387	365
Associate Degree	819	692	1,511	401
Undeclared Major	57	99	156	0
Gen Stud/Pre-Prof	0	0	0	1,464
TECHNOLOGY	2,088	166	2,254	2,280
B.S. Degree	762	53	815	799
Associate Degree	1,207	99	1,306	1,481
Undeclared Major	119	14	133	0
EDUCATION	1,005	587	1,592	1,651
Masters Degree	35	39	74	49
B.S. Degree	568	293	861	1,047
Associate Degree	386	239	625	400
Undeclared Major	11	10	21	155
Non-degree Teacher Cert	5	6	11	0
ALLIED HEALTH SCIENCES	331	1,183	1,514	1,495
B.S. Degree	170	461	631	645
Associate Degree	160	711	871	591
Undeclared Major	1	11	12	259
PHARMACY	204	233	437	427
Pharm D Degree	3	12	15	416
B.S. Degree	201	221	422	11
OPTOMETRY	86	100	186	187
O.D. Degree	67	59	126	123
Associate Degree	19	41	60	64
TOTALS	6,576	4,612	11,188	12,134

Source: Fall Quarter Enrollment Report, Office of the Registrar
1992 - Quarter System, 1993 Semester System

ENROLLMENT BY AGE
UNDERGRADUATE STUDENTS - DEGREE SEEKING
FALL 1993

AGE	FULL-TIME STUDENTS			PART-TIME STUDENTS		
	MALE	FEMALE	GRAND TOTAL	MALE	FEMALE	GRAND TOTAL
<18	2	8	10 0.11%			0 0.00%
18	730	586	1,316 14.74%	4	5	9 0.57%
19	1,000	621	1,621 18.16%	40	30	70 4.47%
20	861	594	1,455 16.30%	58	40	98 6.25%
21	808	552	1,360 15.23%	53	58	111 7.08%
22	757	397	1,154 12.93%	107	76	183 11.68%
23	453	213	666 7.46%	107	50	157 10.02%
24	232	100	332 3.72%	68	34	102 6.51%
25	133	69	202 2.26%	36	19	55 3.51%
26	92	48	140 1.57%	29	19	48 3.06%
27	67	38	105 1.18%	22	12	34 2.17%
28	41	30	71 0.80%	25	14	39 2.49%
29	26	29	55 0.62%	16	21	37 2.36%
30	35	21	56 0.63%	26	24	50 3.19%
31	20	16	36 0.40%	14	20	34 2.17%
32	14	22	36 0.40%	19	17	36 2.30%
33	22	9	31 0.35%	16	23	39 2.49%
34	20	20	40 0.45%	15	26	41 2.62%
35	15	22	37 0.41%	10	20	30 1.91%
36	7	12	19 0.21%	13	19	32 2.04%
37	11	13	24 0.27%	15	24	39 2.49%
38	10	9	19 0.21%	8	21	29 1.85%
39	5	15	20 0.22%	11	25	36 2.30%
40	6	12	18 0.20%	11	24	35 2.23%
41	7	10	17 0.19%	7	31	38 2.43%
42	12	3	15 0.17%	4	19	23 1.47%
43	10	11	21 0.24%	6	16	22 1.40%
44	4	3	7 0.08%	4	13	17 1.08%
45	4	2	6 0.07%	3	12	15 0.96%
46	3	7	10 0.11%	6	11	17 1.08%
47			0 0.00%	4	14	18 1.15%
48	1	3	4 0.04%	1	10	11 0.70%
49	2	2	4 0.04%		7	7 0.45%
50	1	3	4 0.04%	4	6	10 0.64%
51	2	3	5 0.06%	2	3	5 0.32%
52	2	1	3 0.00%		4	4 0.26%
53	2		2 0.02%	1	5	6 0.38%
54	1		1 0.01%		3	3 0.19%
55			0 0.00%	1	1	2 0.13%
56			0 0.00%		1	1 0.06%
57	1		1 0.01%			0 0.00%
58			0 0.00%	1		1 0.06%
59			0 0.00%			0 0.00%
60			0 0.00%		1	1 0.06%
61			0 0.00%		1	1 0.06%
62			0 0.00%			0 0.00%
63			0 0.00%			0 0.00%
64			0 0.00%			0 0.00%
>64			0 0.00%			0 0.00%
UNKNOWN	4		4 0.04%	4	17	21 1.34%
TOTAL	6,423	3,504	8,927 100.00%	771	796	1,567 100.00%

TOTAL FULL-TIME AND PART-TIME

	8,194	4,300	10,494
Average Age - Full-Time			22
Average Age - Part-Time			29
Average Age - Full-Time and Part-Time			23

STUDENTS/ENROLLMENT

ENROLLMENT BY AGE UNDERGRADUATE STUDENTS - NON-DEGREE SEEKING FALL 1993

AGE	FULL-TIME STUDENTS			PART-TIME STUDENTS		
	MALE	FEMALE	GRAND TOTAL	MALE	FEMALE	GRAND TOTAL
<18		1	1 0.01%	1		1 0.06%
18		2	2 0.02%	1		1 0.06%
19	5	5	10 0.11%		1	1 0.06%
20	2	6	8 0.09%	1	3	4 0.26%
21	4	2	6 0.07%	4	1	5 0.32%
22	3	5	8 0.09%	3	6	9 0.57%
23	5		5 0.06%	5	2	7 0.45%
24		2	2 0.02%	3	8	11 0.70%
25	2	2	4 0.04%	6	4	10 0.64%
26	2	2	4 0.04%	3	7	10 0.64%
27		1	1 0.01%	4	2	6 0.38%
28	1	2	3 0.03%		2	2 0.13%
29		1	1 0.01%	5	3	8 0.51%
30		1	1 0.01%	7	3	10 0.64%
31			0 0.00%	6	5	11 0.70%
32			0 0.00%	10	4	14 0.89%
33			0 0.00%	6	6	12 0.77%
34	1		1 0.01%	8	1	9 0.57%
35	1	2	3 0.03%	7	4	11 0.70%
36			0 0.00%	6	5	11 0.70%
37			0 0.00%	5	4	9 0.57%
38			0 0.00%	16	1	17 1.08%
39			0 0.00%	6	6	12 0.77%
40			0 0.00%	10	6	16 1.02%
41			0 0.00%	7	3	10 0.64%
42		1	1 0.01%	5	6	11 0.70%
43			0 0.00%	9	6	15 0.96%
44			0 0.00%	2	1	3 0.19%
45			0 0.00%	4	4	8 0.51%
46			0 0.00%	2		2 0.13%
47			0 0.00%	7	4	11 0.70%
48	1		1 0.01%	7	4	11 0.70%
49	1		1 0.01%	6	3	9 0.57%
50			0 0.00%	3	1	4 0.26%
51			0 0.00%			0 0.00%
52			0 0.00%		3	3 0.19%
53			0 0.00%			0 0.00%
54			0 0.00%	1	1	2 0.13%
55			0 0.00%		1	1 0.06%
56			0 0.00%		3	3 0.19%
57			0 0.00%			0 0.00%
58			0 0.00%	2		2 0.13%
59			0 0.00%			0 0.00%
60			0 0.00%			0 0.00%
61			0 0.00%	1		1 0.06%
62			0 0.00%			0 0.00%
63			0 0.00%			0 0.00%
64			0 0.00%			0 0.00%
>64			0 0.00%		1	1 0.06%
UNKNOWN	6		6 0.07%	17	13	30 1.91%
TOTAL	34	35	69 100.00%	198	138	334 100.00%

TOTAL FULL-TIME AND PART-TIME

230	173	403
Average Age - Full-Time		24
Average Age - Part-Time		36
Average Age - Full-Time and Part-Time		34

**ENROLLMENT BY AGE
GRADUATE STUDENTS
FALL 1993**

AGE	FULL-TIME STUDENTS			PART-TIME STUDENTS		
	MALE	FEMALE	GRAND TOTAL	MALE	FEMALE	GRAND TOTAL
<18			0 0.00%			0 0.00%
18			0 0.00%			0 0.00%
19			0 0.00%			0 0.00%
20			0 0.00%			0 0.00%
21			0 0.00%			0 0.00%
22			0 0.00%			0 0.00%
23	1		1 16.67%	2	1	3 2.48%
24			0 0.00%	3		3 2.48%
25		1	1 16.67%	2	3	5 4.13%
26			0 0.00%	4	3	7 5.79%
27			0 0.00%		3	3 2.48%
28			0 0.00%	1	2	3 2.48%
29			0 0.00%	3	1	4 3.31%
30			0 0.00%	2		2 1.65%
31			0 0.00%	3	3	6 4.96%
32			0 0.00%	2	1	3 2.48%
33			0 0.00%	4	1	5 4.13%
34			0 0.00%	2	2	4 3.31%
35			0 0.00%	2		2 1.65%
36			0 0.00%		1	1 0.83%
37			0 0.00%	3	2	5 4.13%
38			0 0.00%	1	2	3 2.48%
39	2		2 33.33%	2	2	4 3.31%
40			0 0.00%	4	1	5 4.13%
41			0 0.00%	2	3	5 4.13%
42			0 0.00%	1	5	6 4.96%
43			0 0.00%	1	2	3 2.48%
44		1	1 16.67%	3		3 2.48%
45			0 0.00%	1	2	3 2.48%
46		1	1 16.67%	1	1	2 1.65%
47			0 0.00%	6	1	7 5.79%
48			0 0.00%	3	2	5 4.13%
49			0 0.00%			0 0.00%
50			0 0.00%	1	3	4 3.31%
51			0 0.00%			0 0.00%
52			0 0.00%	1		1 0.83%
53			0 0.00%	2		2 1.65%
54			0 0.00%			0 0.00%
55			0 0.00%			0 0.00%
56			0 0.00%			0 0.00%
57			0 0.00%	2		2 1.65%
58			0 0.00%			0 0.00%
59			0 0.00%			0 0.00%
60			0 0.00%			0 0.00%
61			0 0.00%		1	1 0.83%
62			0 0.00%			0 0.00%
63			0 0.00%			0 0.00%
64			0 0.00%			0 0.00%
>64			0 0.00%			0 0.00%
UNKNOWN			0 0.00%	5	4	9 7.44%
TOTAL	3	3	6 100.00%	69	62	121 100.00%

TOTAL FULL-TIME AND PART-TIME

	72	66	127
Average Age - Full-Time			36
Average Age - Part-Time			37
Average Age - Full-Time and Part-Time			37

STUDENTS/ENROLLMENT

ENROLLMENT BY AGE FIRST PROFESSIONAL STUDENTS FALL 1993

AGE	FULL-TIME STUDENTS			PART-TIME STUDENTS		
	MALE	FEMALE	GRAND TOTAL	MALE	FEMALE	GRAND TOTAL
<18			0 0.00%			0 0.00%
18		1	1 0.71%			0 0.00%
19			0 0.00%			0 0.00%
20			0 0.00%			0 0.00%
21	2	2	4 2.84%			0 0.00%
22	7	19	26 18.44%			0 0.00%
23	17	16	33 23.40%			0 0.00%
24	14	11	25 17.73%			0 0.00%
25	7	7	14 9.93%			0 0.00%
26	4	3	7 4.96%			0 0.00%
27	4	4	8 5.67%			0 0.00%
28	3		3 2.13%			0 0.00%
29	2	1	3 2.13%			0 0.00%
30	2		2 1.42%			0 0.00%
31	4	4	8 5.67%			0 0.00%
32	2	1	3 2.13%			0 0.00%
33		1	1 0.71%			0 0.00%
34		1	1 0.71%			0 0.00%
35			0 0.00%			0 0.00%
36			0 0.00%			0 0.00%
37			0 0.00%			0 0.00%
38			0 0.00%			0 0.00%
39	1		1 0.71%			0 0.00%
40	1		1 0.71%			0 0.00%
41			0 0.00%			0 0.00%
42			0 0.00%			0 0.00%
43			0 0.00%			0 0.00%
44			0 0.00%			0 0.00%
45			0 0.00%			0 0.00%
46			0 0.00%			0 0.00%
47			0 0.00%			0 0.00%
48			0 0.00%			0 0.00%
49			0 0.00%			0 0.00%
50			0 0.00%			0 0.00%
51			0 0.00%			0 0.00%
52			0 0.00%			0 0.00%
53			0 0.00%			0 0.00%
54			0 0.00%			0 0.00%
55			0 0.00%			0 0.00%
56			0 0.00%			0 0.00%
57			0 0.00%			0 0.00%
58			0 0.00%			0 0.00%
59			0 0.00%			0 0.00%
60			0 0.00%			0 0.00%
61			0 0.00%			0 0.00%
62			0 0.00%			0 0.00%
63			0 0.00%			0 0.00%
64			0 0.00%			0 0.00%
>64			0 0.00%			0 0.00%
UNKNOWN			0 0.00%			0 0.00%
TOTAL	70	71	141 100.00%	0	0	0

TOTAL FULL-TIME AND PART-TIME

70 71 141

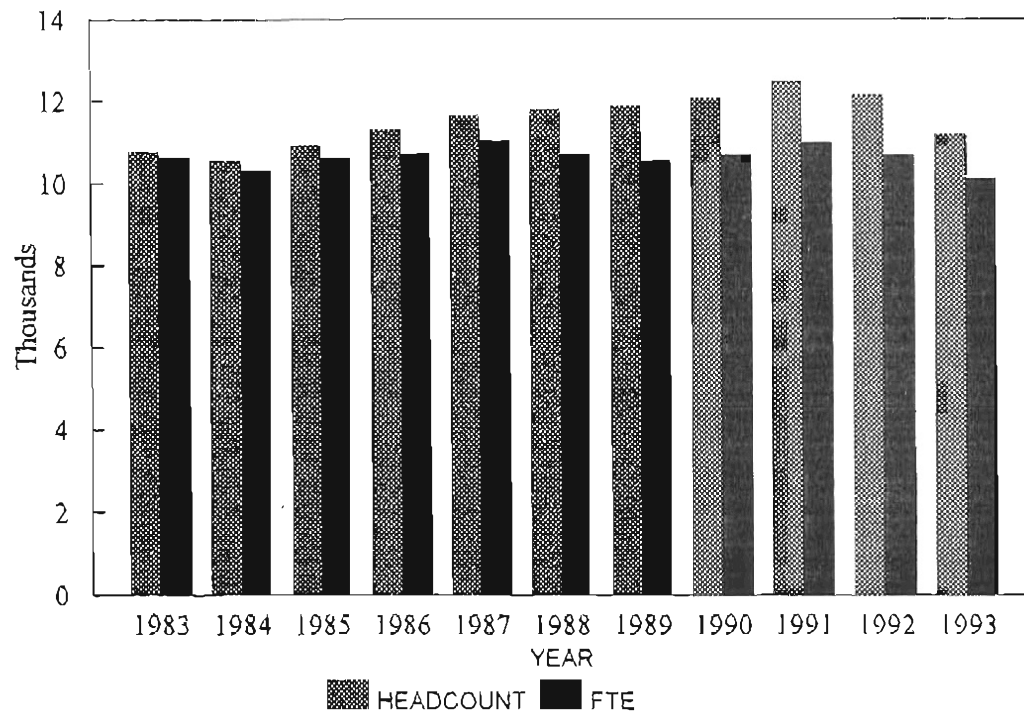
Average Age - Full-Time 26

Average Age - Part-Time 0

Average Age - Full-Time and Part-Time 26

Source: SIS+ Download Fall 1993
IPEOS 93\FALLB

TOTAL HEADCOUNT ENROLLMENT COMPARED TO FTE



YEAR	HEADCOUNT	FTE
1983	10,767	10,618
1984	10,540	10,309
1985	10,909	10,608
1986	11,310	10,719
1987	11,643	11,024
1988	11,792	10,708
1989	11,878	10,548
1990	12,076	10,695
1991	12,461	10,988
1992	12,134	10,682
1993	11,188	10,107

NOTE: FTE - Full-Time Equated Student, i.e., 2 Half-Time Students = 1 FTE

Source: 1983-1992 - Headcount Enrollment: Fall Quarter Enrollment Report, Student FTE: FACL 2425-2, Fall Quarter
1993 - Semester System - Paradox "Ask"

STUDENTS/ENROLLMENT

STUDENT CREDIT HOUR PRODUCTION FOR FALL TERM

FALL TERM	LOWER	UPPER	GRADUATE	TOTAL
80/81	116,754	55,650	2,064	174,468
81/82	116,281	58,193	2,266	176,740
82/83	110,597	58,352	2,085	171,034
83/84	106,285	56,200	2,087	164,572
84/85	99,711	57,394	2,080	159,185
85/86	104,502	53,747	2,285	160,534
86/87	107,788	52,205	2,641	162,634
87/88	113,575	53,775	2,723	170,073
88/89	106,499	55,915	2,751	165,165
89/90	102,483	57,181	2,968	162,632
90/91	107,185	54,647	3,054	164,886
91/92	105,601	61,178	2,737	169,516
92/93	99,166	62,661	2,904	164,731
93/94	81,616	59,453	3,235	144,304

Source: 1980/81 - 1992/93, Student Credit Hour Production - Total College, FACL2425-1 Fall Quarter Report
1993-94 Semester System - FSU Enrollment Report for Presidents Council

**ETHNIC DISTRIBUTION: TOTAL UNIVERSITY ENROLLMENT
FALL 1993 COMPARED WITH FALL 1992**

	1993 TOTAL	1992 TOTAL	CHANGES
AMERICAN INDIAN/NATIVE ALASKAN	99	97	2
ASIAN OR PACIFIC ISLANDER	118	92	26
BLACK	1,056	1,079	(23)
FOREIGN	267	312	(45)
HISPANIC	120	113	7
WHITE	9,396	10,441	(1,045)
UNREPORTED	132	0	132
TOTAL	11,188	12,134	(946)

The following definitions are used in determining racial/ethnic designations:

American Indian or Alaskan Native: A person having origins in any of the original peoples of North America.

Asian or Pacific Islander: A person having origins in any of the original peoples of the Far East, Southeast Asia, the Indian Subcontinent, or the Pacific Islands.

Black (not of Hispanic Origin): A person having origins in any of the black racial groups of Africa.

Foreign: A person who is not a citizen of the United States, and who is in this country on a temporary basis and does not have a right to remain indefinitely.

Hispanic: A person of Mexican, Puerto Rican, Cuban, Central or South American or other Spanish culture or origin.

White (not of Hispanic origin): A person having origins in any of the original peoples of Europe, North Africa, or the Middle East.

Source: Fall Quarter Enrollment Report, Office of the Registrar
1992 - Quarter System, 1993 - Semester System

STUDENTS/ENROLLMENT

ENROLLMENT BY PROGRAM FALL TERM

COLLEGE	1988/89	1989/90	1990/91	1991/92	1992/93	1993/94
ALLIED HEALTH SCIENCES						
ALLIED DENTAL						
Dental Assisting	26	28	25	14	2	0
Dental Hygiene	115	106	113	114	123	107
Dental Technology	55	48	42	31	29	40
DEPARTMENT TOTAL	196	182	180	159	154	147
ENVIRONMENTAL AND CLINICAL SCIENCE						
Industrial & Env Health Mgt	74	90	118	133	157	136
Medical Technology	60	50	49	54	51	52
Medical Lab Technology	27	19	29	17	12	14
DEPARTMENT TOTAL	161	159	196	204	220	202
HOSPITAL RELATED						
Respiratory Care	19	24	24	25	47	48
Radiography	93	86	110	109	141	121
Nuclear Med 2-Yr	29	39	40	38	44	49
Nuclear Med 4-Yr	18	15	22	25	21	13
DEPARTMENT TOTAL	159	164	196	197	253	231
NURSING						
Nursing 2-Yr	50	56	63	84	109	66
Nursing 4-Yr	23	13	13	6	10	4
Total	73	69	76	90	119	70
OFF-CAMPUS						
Nursing 4-Yr	184	145	147	147	165	226
Off-Campus Total	184	145	147	147	165	226
DEPARTMENT TOTAL	257	214	223	237	284	296
PRE-ALLIED HEALTH						
Pre-Industrial & Env Health*	0	0	0	7	5	2
Pre-Medical Tech*	0	0	0	7	12	9
Pre-Dental Hygiene*	0	0	0	70	59	58
Pre-Dental Tech	0	0	0	0	0	0
Pre-Med Lab Tech 2-Yr*	0	0	0	6	7	12
Pre-Respiratory Care*	0	0	0	3	12	25
Pre-Radiography*	0	0	0	19	26	78
Pre-Nursing 2-Yr*	0	0	0	85	125	138
Pre-Health Info Tech	0	0	0	0	4	11
Pre-Health Info Mgt	0	0	0	0	0	6
Pre-Nuclear Med 2-Yr*	0	0	0	4	8	30
Pre-Nuclear Med 4-Yr*	0	0	0	0	0	0
Pre-Health Systems	0	0	0	0	1	1
Pre-Med Records T*	0	0	0	3	0	0
DEPARTMENT TOTAL	0	0	0	204	259	370

STUDENTS/ENROLLMENT

COLLEGE	1988/89	1989/90	1990/91	1991/92	1992/93	1993/94
ALLIED HEALTH SCIENCES						
HEALTH MANAGEMENT						
Health Info Tech 2-Yr	0	0	0	0	72	46
Health Info Mgt 4-Yr	0	0	0	0	53	55
Medical Records Tech	57	55	50	63	0	0
BS Medical Records	79	64	65	54	0	0
Health Systems Mgt	49	50	50	48	68	74
Health Systems	0	0	1	0	0	0
Occ Safety & Health 4-Yr	0	0	0	0	0	0
DEPARTMENT TOTAL	185	169	166	165	193	175
OFF-CAMPUS						
Undeclared	1	34	43	57	49	12
EXD Environmental Health	0	0	0	1	2	0
EXD Health Systems Mgt	41	25	23	34	55	68
EXD Undeclared	3	1	1	0	2	0
Health Info Tech 2-Yr	0	0	0	0	0	10
Health Info Mgt 4-Yr	0	0	0	0	0	3
Medical Records Tech	0	0	20	28	12	0
BS Medical Records Adm	5	20	34	16	12	0
Off-Campus Total	50	80	121	136	132	93
ON-CAMPUS TOTAL	774	743	814	1,019	1,198	1,195
OFF-CAMPUS TOTAL	234	225	268	283	297	319
COLLEGE TOTAL	1,008	968	1,082	1,302	1,495	1,514

*Students are lacking prerequisite courses or have a low GPA in certain areas.

STUDENTS/ENROLLMENT

**ENROLLMENT BY PROGRAM
FALL TERM**

COLLEGE	1988/89	1989/90	1990/91	1991/92	1992/93	1993/94
ARTS & SCIENCES						
Evening College	189	207	170	132	110	98
Undeclared	0	0	0	0	0	1
BIOLOGY						
Ornamental Hort 2-Yr	33	28	34	41	31	27
Applied Biology 4-Yr	63	89	107	117	98	106
Biotechnology	3	8	7	9	14	19
DEPARTMENT TOTAL	288	332	318	299	253	251
PHYSICAL SCIENCES						
Industrial Chemical Tech	13	22	20	20	25	18
DEPARTMENT TOTAL	13	22	20	20	25	18
MATHEMATICS						
Actuarial Science - Math	0	0	0	3	7	6
Applied Math	19	22	21	15	9	10
DEPARTMENT TOTAL	19	22	21	18	16	16
LANGUAGES & LITERATURE						
Journalism Associate	53	73	76	51	49	45
Technical Communications	14	16	12	13	13	20
DEPARTMENT TOTAL	67	89	88	64	62	65
SOCIAL SCIENCES						
BS Social Work	270	267	274	211	224	226
DEPARTMENT TOTAL	270	267	274	211	224	226
STUDENT DEVELOPMENT SERVICES						
Collegiate Skills	0	0	0	0	0	259
Directed Studies	0	0	0	0	0	322
Intensive English Program	76	50	67	68	98	57
General Studies	437	494	535	581	603	1
DEPARTMENT TOTAL	513	544	602	649	701	639
PRE-PROF NON-SCIENCES						
Pre-Arts/Liberal Arts**	247	250	252	413	296	269
Pre-Law	58	72	68	74	66	44
Pre-Teaching Elementary*	103	100	85	0	0	0
Pre-Teaching Secondary*	69	56	58	0	0	0
DEPARTMENT TOTAL	477	478	463	487	362	313

STUDENTS/ENROLLMENT

COLLEGE	1988/89	1989/90	1990/91	1991/92	1992/93	1993/94
ARTS & SCIENCES						
PRE-PROF SCIENCE						
Pre-Science	116	121	144	38	26	114
Pre-Dentistry	17	29	32	20	19	12
Pre-Engineering	39	54	45	40	30	10
Pre-Medicine	24	49	49	38	44	28
Pre-Mortuary Science	11	15	10	13	11	12
Pre-Veterinary Science	8	14	17	22	23	11
Pre-Optometry	114	130	120	114	131	88
Pre-Pharmacy	317	305	266	266	303	251
DEPARTMENT TOTAL	646	717	683	551	587	526
COLLEGE TOTAL	2,293	2,471	2,469	2,299	2,230	2,054

*Moved to College of Education 1991/92

**Pre-Arts changed to Liberal Arts 1992/93

STUDENTS/ENROLLMENT

ENROLLMENT BY PROGRAM FALL TERM

COLLEGE	1988/89	1989/90	1990/91	1991/92	1992/93	1993/94
BUSINESS						
ACCOUNTANCY						
Master/Accountancy	6	10	7	9	8	3
Accountancy 4-Yr	302	311	319	335	253	180
Accountancy CIS 4-Yr	0	0	0	0	0	18
Accountancy Finance 4-Yr	52	54	56	54	47	28
Accountancy Transfer	30	24	26	30	28	26
Total	390	399	408	428	336	255
OFF-CAMPUS						
Accounting 4-Yr	40	41	28	13	9	4
Accounting Transfer	0	0	8	22	33	34
Undeclared	1	48	46	50	46	73
Off-Campus Total	41	89	82	85	88	111
DEPARTMENT TOTAL	431	488	490	513	424	366
MANAGEMENT						
Business Administration	648	609	592	554	468	368
Business Admin Transfer	76	73	68	71	75	48
Business Economics	19	13	16	15	4	0
Bus Economics Transfer	1	2	1	0	0	0
Finance 4-Yr	50	53	62	77	67	47
Finance Transfer	16	14	15	6	5	6
General Business	0	0	0	0	0	12
Human Resource Managemen	0	0	0	0	0	11
Human Res Mgt Transfer	0	0	0	0	0	1
Insurance 4-Yr	37	35	32	34	37	16
Insurance/Real Estate 4-Yr	17	27	37	30	21	20
Insurance Transfer	6	5	3	8	7	0
International Business	39	41	49	60	72	57
International Bus Transfer	6	3	2	6	6	5
Legal Assistant	55	65	88	96	79	62
Management	222	252	249	234	180	120
Mgt Transfer	34	27	23	26	26	19
Operations Management	0	0	0	0	0	8
Operations Mgt Transfer	0	0	0	0	0	2
Personnel Mgt/Ind Relations	34	25	31	40	40	16
Per Mgt/Ind Rel Transfer	10	8	8	7	6	6
Production Mgt 4-Yr	20	26	23	28	13	4
Production Mgt Transfer	36	31	23	14	13	3
Quantitative Business	7	6	4	5	6	4
Qnt Business Transfer	2	2	1	0	2	0
Real Estate 2-Yr	25	21	29	13	22	17
Small Business Mgt	86	62	57	58	61	39
Small Bus Mgt Transfer	10	14	12	23	19	11
Total	1,436	1,414	1,425	1,405	1,229	902
OFF-CAMPUS						
Business Administration	157	150	65	48	25	16
Bus Admin Transfer	0	0	65	118	141	128
Off-Campus Total	157	150	130	166	166	144
DEPARTMENT TOTAL	1,593	1,564	1,555	1,571	1,395	1,046
DIVERSIFIED BUSINESS						
Accelerated Business	0	2	1	0	0	0
Diversified Business	57	63	60	33	28	13
DEPARTMENT TOTAL	57	65	61	33	28	13

STUDENTS/ENROLLMENT

COLLEGE	1988/89	1989/90	1990/91	1991/92	1992/93	1993/94
BUSINESS						
COMPUTER INFORMATION SYSTEMS						
CIS 4-Yr	196	183	198	217	155	168
CIS Accounting 4-Yr	69	58	49	54	43	17
CIS Marketing 4-Yr	26	25	21	19	13	6
CIS 4-Yr Transfer	46	49	38	31	32	24
CIS Mgt 4-Yr	71	65	68	61	45	35
Master CIS	0	0	0	0	0	7
Master CIS Mgt	3	10	9	13	10	0
Master CIS Mgt Conditional	7	9	12	9	11	9
Masters Info Sys Mgt	0	0	0	0	0	10
Court Reporting	63	79	58	61	40	37
Executive Secretary	46	39	37	25	16	6
Legal Secretary	23	20	26	26	13	10
Administrative Services	41	31	9	3	0	0
Admin Services Transfer	8	6	1	0	0	0
Administrative Assistant	54	43	31	43	47	34
Office Automation Systems	0	0	15	18	17	15
Office Auto Systems Transfer	0	0	2	3	12	9
Total	653	617	574	583	454	387
OFF-CAMPUS						
Master CIS	0	0	0	0	0	11
Master CIS Mgt	1	4	10	8	9	1
Master CIS Mgt Conditional	3	5	11	8	6	0
Masters Info Sys Mgt	0	0	0	0	0	13
Off-Campus Total	4	9	21	16	15	25
DEPARTMENT TOTAL	657	626	595	599	469	412
MARKETING						
Advertising	146	172	196	179	138	126
Advertising Transfer	17	22	29	22	31	21
Food Service	174	185	187	171	143	104
Hospitality Management	0	0	0	0	0	68
Hospitality Mgt Transfer	45	43	59	78	77	0
Marketing PGM 4-Yr	310	328	354	371	384	359
Marketing PTM 4-Yr	62	59	69	86	89	74
Marketing 4-Yr	205	221	238	278	258	130
Marketing Transfer	14	24	19	16	20	6
Marketing Retail	59	50	42	37	30	18
Marketing Retail Transfer	12	7	7	3	2	3
Marketing Sales	106	101	107	89	99	82
Marketing Sales Transfer	29	23	12	20	31	15
Pre-PGM	0	0	0	0	0	72
Public Relations	60	57	71	86	55	54
Public Relations Transfer	13	8	9	14	14	7
Retail Fashion Merchandising	102	84	86	68	42	14
Retailing 2-Yr	0	0	0	0	0	13
Retailing 4-Yr	0	0	0	0	0	8
Retailing Transfer	0	0	0	0	0	1
Visual Communications*	134	150	134	142	115	102
Visual Communications 4-Yr	4	21	16	8	20	37
DEPARTMENT TOTAL	1,492	1,555	1,635	1,668	1,548	1,314
ON-CAMPUS TOTAL	4,028	4,050	4,103	4,117	3,595	2,871
OFF-CAMPUS TOTAL	202	248	233	267	269	280
COLLEGE TOTAL	4,230	4,298	4,336	4,384	3,864	3,151

*Program was Commercial Art In 1987

STUDENTS/ENROLLMENT

ENROLLMENT BY PROGRAM FALL TERM

COLLEGE	1988/89	1989/90	1990/91	1991/92	1992/93	1993/94
EDUCATION						
OCCUPATIONAL EDUCATION						
Allied Health Education	8	4	10	10	8	7
Biology Education	0	0	0	0	37	31
Business Education	105	102	94	72	58	60
Business Educ Office Admin	0	0	0	0	1	1
Bus Educ General Business	0	0	0	0	12	11
Certification	4	3	10	8	4	3
Chemistry Education	0	0	0	0	5	6
CM School Educ	2	1	0	0	0	0
Master Career/Tech Educ	0	0	0	0	0	3
Mast Career/Tech Educ Prov	0	0	0	0	0	7
Master Occupational Educ	19	18	16	18	20	8
Master Occ Ed Provisional	14	10	6	5	5	3
Math Education	56	59	60	64	59	54
Pre-Teaching Elementary	0	0	0	85	87	78
Pre-Teaching Secondary	0	0	0	62	68	61
Science Education	60	62	62	51	14	8
Technical Education	47	34	35	36	34	26
Training - Business & Ind	4	1	3	7	5	4
Wage Earning Home Econ	1	4	2	4	8	8
Total	320	298	298	422	425	379
OFF-CAMPUS						
Allied Health Education	22	9	15	13	12	9
Business Education	22	13	12	13	9	10
Certification	21	10	9	11	10	8
Certification Graduate	0	0	0	0	0	1
Master Career/Tech Educ	0	0	0	0	0	3
Master Occupational Educ	11	12	18	7	19	10
Master Occ Ed Provisional	9	7	11	1	5	4
Math Education	2	4	2	4	1	2
Science Education	4	1	0	2	3	1
Technical Education	29	22	26	17	26	16
Training - Business & Ind	0	1	0	0	1	2
Undeclared - Undergrad	26	10	17	41	32	21
Undeclared - Graduate	0	0	0	0	0	35
Wage Earning Home Econ	4	6	5	3	1	5
Off-Campus Total	150	95	115	112	119	127
DEPARTMENT TOTAL	470	393	413	534	544	506
TELEVISION PRODUCTION						
Audiovisual Production 2-Yr	105	98	42	12	2	0
Television Production	76	83	141	137	113	122
DEPARTMENT TOTAL	181	181	183	149	115	122
LEISURE STUDIES						
Recreation Leadership Mgt	83	80	100	113	94	109
DEPARTMENT TOTAL	83	80	100	113	94	109

STUDENTS/ENROLLMENT

COLLEGE	1988/89	1989/90	1990/91	1991/92	1992/93	1993/94
EDUCATION						
CHILD DEVELOPMENT						
Child Development	75	57	97	77	89	74
DEPARTMENT TOTAL	75	57	97	77	89	74
CRIMINAL JUSTICE						
Criminal Justice	566	544	596	672	498	369
Pre-Criminal Justice AA	0	0	0	0	0	15
Pre-Criminal Justice AAS	0	0	0	0	309	397
Criminal Justice Specialist	0	0	0	2	2	0
DEPARTMENT TOTAL	566	544	596	674	809	781
ON-CAMPUS TOTAL	1,225	1,160	1,274	1,435	1,532	1,465
OFF-CAMPUS TOTAL	150	95	115	112	119	127
COLLEGE TOTAL	1,375	1,255	1,389	1,547	1,651	1,592

STUDENTS/ENROLLMENT

ENROLLMENT BY PROGRAM FALL TERM

COLLEGE	1988/89	1989/90	1990/91	1991/92	1992/93	1993/94
OPTOMETRY						
PROFESSIONAL						
O.D. Optometry	128	125	124	121	123	126
DEPARTMENT TOTAL	128	125	124	121	123	126
TECHNICAL						
Optometric Tech	28	25	21	23	19	23
Opticianry*	47	30	24	30	45	37
Undeclared	0	117	0	0	0	0
DEPARTMENT TOTAL	75	172	45	53	64	60
COLLEGE TOTAL	203	297	169	174	187	186

*Was Ophthalmic Disp in 87/88

COLLEGE	1988/89	1989/90	1990/91	1991/92	1992/93	1993/94
PHARMACY						
BS PHARMACY						
BS Pharmacy	385	380	384	408	416	422
DEPARTMENT TOTAL	385	380	384	408	416	422
PHARMACY D						
Pharm D Add ON	0	0	6	12	4	6
Pharm D Track IN	0	0	0	0	7	9
Pharmacy D	0	0	0	0	11	0
DEPARTMENT TOTAL	0	0	6	12	22	15
COLLEGE TOTAL	385	380	390	420	438	437

ENROLLMENT BY PROGRAM FALL TERM

COLLEGE	1988/89	1989/90	1990/91	1991/92	1992/93	1993/94
TECHNOLOGY						
AUTOMOTIVE						
Auto Body	53	42	55	59	62	48
Auto & Heavy Equip Mgt	155	137	121	141	144	118
Auto Machine	46	35	32	34	21	22
Auto Service	230	204	175	173	150	151
Heavy Equip Service	103	92	81	76	83	16
Heavy Equip Tech	0	0	0	0	0	59
Heavy Duty Engine	10	12	9	10	4	0
Pre-Auto Service Tech	0	0	0	0	0	5
Total	597	522	473	493	464	419
OFF-CAMPUS						
Auto H/E Mfg	0	0	6	12	3	0
Off-Campus Total	0	0	6	12	3	0
DEPARTMENT TOTAL	597	522	479	505	467	419
CONSTRUCTION						
Aerial Mapping	17	13	4	2	0	0
Architectural Tech	151	164	171	184	147	112
Building Construction	100	96	105	111	116	80
Civil Eng Tech	0	0	0	0	0	27
Construction Eng Tech	25	30	30	41	31	0
Construction Mgt	47	37	46	52	41	13
Construction Mgt Transfer	0	0	0	0	0	47
Facilities Management	0	13	22	18	29	31
HVACR Engr Tech	0	0	0	0	0	40
HVACR Tech	0	0	0	0	0	68
Heat Refr Air Cond	132	108	99	96	87	0
Pre-Arch Tech	0	0	0	0	0	11
Pre-Bldg Const Tech	0	0	0	0	0	26
Pre-Civil Eng Tech	0	0	0	0	0	3
Pre-HVACR Tech	0	0	0	0	0	27
Pre-Surveying Tech	0	0	0	0	0	2
Survey Engineering	64	60	70	71	69	80
Surveying Tech	11	9	14	16	28	34
HVACR Engineering*	23	29	34	39	38	0
Total	570	559	595	630	586	601
OFF-CAMPUS						
Construction Mgt	0	0	7	10	13	2
HVACR Engineering	0	0	0	8	20	14
Surveying 4-Yr	0	0	0	0	0	0
Off-Campus Total	0	0	7	18	33	16
DEPARTMENT TOTAL	570	559	602	648	619	617
ELECTRICAL						
Avionics	1	3	1	0	0	0
Elec/E'tronics Eng Tech	52	54	49	56	56	69
Electrical Power	9	0	0	0	0	0
Industrial Electronics	139	137	105	94	95	68
Pre-Indust Elect Tech	0	0	0	0	0	12
Total	201	194	155	150	151	149

STUDENTS/ENROLLMENT

COLLEGE	1988/89	1989/90	1990/91	1991/92	1992/93	1993/94
TECHNOLOGY						
OFF-CAMPUS						
Industrial Electronics	0	0	0	9	15	0
Elec/E'tronics Eng Tech	0	0	0	0	0	10
Off-Campus Total	0	0	0	9	15	10
DEPARTMENT TOTAL	201	194	155	159	166	159
PRINTING						
Printing	182	163	155	150	124	103
BS Printing	39	51	47	48	36	42
DEPARTMENT TOTAL	221	214	202	198	160	145
MANUFACTURING ENG						
Computer Numerical Ctrl	1	0	0	0	0	0
Manufacturing Eng	48	47	48	47	56	59
Manufacturing Tool**	76	64	67	67	62	42
Mechanical Engineering	54	56	57	59	66	53
Plastics Tech 2-Yr	166	168	184	202	189	148
Plastics Eng Tech 4-Yr	62	84	88	85	91	96
Pre-Mech Eng	0	0	0	0	0	7
Pre-Mfg Tooling	0	0	0	0	0	1
Pre-Plastics Tech	0	0	0	0	0	31
Pre-Tech Draft /Tool	0	0	0	0	0	3
Product Design Eng	14	35	40	53	57	55
Technical Drafting	100	90	108	99	104	74
Technical Illustration	47	51	51	50	29	27
Welding 2-Yr	66	61	61	68	66	62
Welding 4-Yr	26	29	31	24	30	40
Total	660	685	735	754	750	698
OFF-CAMPUS TOTAL						
Manufacturing Eng	20	24	36	38	38	53
Manufacturing Tech	14	6	2	2	4	3
Plastic Eng Tech 4-Yr	0	0	0	0	0	7
Product Design Eng	0	0	0	0	14	20
Off-Campus Total	34	30	38	40	56	83
DEPARTMENT TOTAL	694	715	773	794	806	781
UNDECLARED	15	5	30	31	62	133
ON-CAMPUS TOTAL	2,264	2,179	2,190	2,256	2,173	2,145
OFF-CAMPUS TOTAL	34	30	51	79	107	109
COLLEGE TOTAL	2,298	2,209	2,241	2,335	2,280	2,254

*Program was Energy Management In 1989

**Program was Machine Tool In 1989

Source: ENRL2406, Student Profile Enrollment Summary - 88/89-92/93 Quarter System
Enrollment By College for Fall 1993/Registrar's Office - 93/94 Semester System

Degrees

DEGREES CONFERRED BY PROGRAM

ACADEMIC YEAR (SUMMER QUARTER - SPRING QUARTER)

	1989-90			1990-91			1991-92			1992-93		
	AS	BS	MS	AS	BS	MS	AS	BS	MS	AS	BS	MS
ALLIED HEALTH SCI												
DENTAL												
Dental Assisting	3			6			7			4		
Dental Hygiene	48			53			49			59		
Dental Technician	<u>16</u>			<u>14</u>			<u>14</u>			<u>15</u>		
TOTAL	67			73			70			78		
HEALTH SYSTEMS MGT												
Environmental Health Tech		1		3								
Environmental Health										1		
Ind & Env Health Mgt		26		37			29			52		
Ind & Env Hlth Haz Waste										3		
Ind & Env Hlth Ind Hyg										1		
Ind & Env Hlth Safety										2		
Occupational Safety/Health												
Health System Mgt		<u>20</u>		<u>27</u>			<u>23</u>			<u>30</u>		
TOTAL		47		67			52			89		
HOSPITAL RELATED												
Medical Lab Tech	9			6			14			6		
Health Info Tech*	48			31			35			46		
Nuclear Med Tech	17			17			14	1		18		
Radiography	42			35			46			47		
Respiratory Care	6			8			13			11		
Health Info Mgt**		29		26			25			23		
Medical Tech		9		13			20			16		
Nuclear Medicine		<u>10</u>		<u>12</u>			<u>10</u>			<u>13</u>		
TOTAL	122	48		97	51		122	56		128	52	
NURSING												
Nursing	<u>13</u>	<u>75</u>		<u>14</u>	<u>32</u>		<u>34</u>	<u>47</u>		<u>42</u>	<u>42</u>	
TOTAL	13	75		14	32		34	47		42	42	
COLLEGE TOTAL	202	170		184	150		226	155		248	183	

*Medical Record Tech changed to Health Info Tech 1992-93

**Medical Record Adm changed to Health Info Mgt 1992-93

DEGREES CONFERRED BY PROGRAM

ACADEMIC YEAR (SUMMER QUARTER - SPRING QUARTER)

	1989-90			1990-91			1991-92			1992-93		
	AS	BS	MS	AS	BS	MS	AS	BS	MS	AS	BS	MS
ARTS & SCIENCES												
BIOLOGY												
Ornamental Horticulture	10			7			14			8		
Applied Biology		32			25			33			34	
Biotechnology		<u>3</u>			<u>3</u>			<u>1</u>			<u>4</u>	
TOTAL	10	35		7	28		14	34		8	38	
PHYSICAL SCIENCES												
Industrial Chem Tech	<u>19</u>			<u>14</u>			<u>16</u>			<u>18</u>		
TOTAL	19			14			16			18		
MATHEMATICS												
Actuarial Sci Math											2	
Applied Math		<u>3</u>			<u>3</u>			<u>7</u>			<u>5</u>	
TOTAL		3			3			7			7	
LANG & LIT												
Journalism	16			10			12			20		
Technical Communication		<u>5</u>			<u>4</u>			<u>4</u>			<u>6</u>	
TOTAL	16	5		10	4		12	4		20	6	
SOCIAL SCIENCES												
Social Services					1			2				
Social Work		<u>54</u>			<u>57</u>			<u>58</u>			<u>70</u>	
TOTAL		54			58			60			70	

	1989-90			1990-91			1991-92			1992-93		
	AS	BS	MS	AS	BS	MS	AS	BS	MS	AS	BS	MS
ARTS & SCIENCES												
GENERAL STUDIES												
Pre-Arts	43			51			51			5		
Pre-Dentistry	1			2			1			1		
Pre-Engineering	4			4			1					
Pre-Law	12			6			8			13		
Pre-Medicine	1			4			1			7		
Pre-Mort Science	1			4			1			3		
Pre-Optometry	13			7			13			10		
Pre-Pharmacy	30			29			31			49		
Pre-Science	13			5			10			9		
Pre-Teach (Elementary)*	17			10			1					
Pre-Teach (Secondary)*	5			10								
Pre-Veterinary	2						1					
Liberal Arts										46		
General Studies	<u>6</u>			<u>4</u>			<u>10</u>			<u>6</u>		
TOTAL	148			136			129			149		
COLLEGE TOTAL												
	193	97		167	93		171	105		195	121	

*Pre-Teach Elementary & Secondary moved to College of Education in Fall, 1991

DEGREES CONFERRED BY PROGRAM

ACADEMIC YEAR (SUMMER QUARTER - SPRING QUARTER)

	1989-90			1990-91			1991-92			1992-93		
	AS	BS	MS	AS	BS	MS	AS	BS	MS	AS	BS	MS
BUSINESS												
ACCOUNTANCY												
Accountancy		69			71			65			71	
Accountancy/Masters			<u>2</u>		<u>5</u>			<u>5</u>				<u>3</u>
TOTAL		69	2		71	5		65	5		71	3
COMPUTER INFO SYS												
Computer Info Systems		67			54			73			52	
CIS Management			<u>1</u>		<u>3</u>			<u>5</u>				<u>6</u>
TOTAL		67	1		54	3		73	5		52	6
MANAGEMENT												
Legal Assistant	18			20			25			26		
Real Estate	14			16			8			14		
Business Administration		201			204			210			220	
Business Economics		6			2			3			1	
Finance		22			28			31			35	
Insurance		18			20			19			30	
Insurance/Real Estate		3			5			7			4	
International Business		8			9			9			20	
Management		69			55			62			51	
Personnel Mgt/Ind Rel		20			16			15			20	
Production Management		30			25			17			20	
Quantitative Business		2			3			3			4	
Small Business Mgt		<u>19</u>			<u>13</u>			<u>12</u>			<u>18</u>	
TOTAL	32	398		36	380		33	388		40	423	
Real Estate (Certificate)	5			7			11			6		

	1989-90			1990-91			1991-92			1992-93		
	AS	BS	MS	AS	BS	MS	AS	BS	MS	AS	BS	MS
BUSINESS												
MARKETING												
Advertising		46			54			60			56	
Advertising/Public Relations		7										
Visual Communication	1						1					
Food Service Mgt	48			56			50			67		
Hospitality Management		23			26			40			47	
Marketing		49			44			64			43	
Marketing/PGM		61			66			55			72	
Marketing/PTM		12			4			9			7	
Marketing/Retail		20			23			18			18	
Mktg/Ret Fash Merch	21			24			16			14		
Marketing/Sales		57			53			51			52	
Public Relations					12			7			18	
Visual Communication	<u>18</u>	<u>11</u>		<u>20</u>	<u>17</u>		<u>36</u>	<u>4</u>		<u>26</u>	<u>3</u>	
TOTAL	88	286		100	299		103	308		107	316	
OFFICE ADMIN												
Court/Freelance Reporting	16			13			15			17		
Office Adm/Adm Assistant	25			14			15			24		
Off Adm/Exec Secretary	7			6			10			8		
Off Adm/Legal Secretary	6			4			3			6		
Office Administration	<u>—</u>	<u>9</u>		<u>—</u>	<u>—</u>		<u>—</u>	<u>—</u>		<u>—</u>	<u>—</u>	
TOTAL	54	9		37			43			55		
Office Automated Systems					9			3			6	
Accelerated Program		2										
Diversified Business	<u>22</u>	<u>—</u>		<u>26</u>	<u>—</u>		<u>27</u>	<u>—</u>		<u>9</u>	<u>—</u>	
TOTAL	22	2		26	9		27	3		9	6	
COLLEGE TOTAL	196	831	3	199	813	8	206	837	10	211	868	9
CERTIFICATES												
Real Estate	5			7			11			6		

DEGREES

DEGREES CONFERRED BY PROGRAM ACADEMIC YEAR (SUMMER QUARTER - SPRING QUARTER)

	1989-90			1990-91			1991-92			1992-93		
	AS	BS	MS	AS	BS	MS	AS	BS	MS	AS	BS	MS
EDUCATION												
TEACHER EDUCATION												
Pre-Teach Elementary*							6			6		
Pre-Teach Secondary*							3			3		
Allied Health Education		10		10			9			10		
Biology Education										11		
Business Education		26		25			18			18		
Chemistry Education										4		
Comm School Education		1										
Mathematics Education		5		5			7			12		
Science Education		16		15			10					
Technical Education		26		23			30			19		
Training Bus & Industry		1					2			3		
Wage Earn Home Econ		4		1			3			3		
Occupational Education		—	24	—	23		—	—	26	—	—	29
TOTAL		89	24	78	23		9	79	26	9	80	29
TELEVISION PROD												
Audiovisual Production	24			23			12			1		
TV Production	—	28		—	37		—	33		—	23	
TOTAL	24	28		23	37		12	33		1	23	
LEISURE STUDIES												
Rec Leadership & Mgt		13		16			20			19		
TOTAL		13		16			20			19		
CRIMINAL JUSTICE												
Pre-Arts Criminal Justice*							8			28		
Criminal Justice		103		95			—	141		—	143	
TOTAL		103		95			8	141		28	143	
CHILD DEVELOPMENT												
Child Development	32			40			34			41		
TOTAL	32			40			34			41		
COLLEGE TOTAL	56	233	24	63	227	23	63	273	26	79	265	29

*Pre-Arts Criminal Justice

*Pre-Teach Elementary & Secondary moved to College of Education in Fall, 1991

DEGREES CONFERRED BY PROGRAM

ACADEMIC YEAR (SUMMER QUARTER - SPRING QUARTER)

	1989-90				1990-91				1991-92				1992-93		
	AS	BS	OD		AS	BS	OD		AS	BS	OD		AS	BS	OD
OPTOMETRY															
Vision Science		21				30				22				25	
Doctor Optometry			33				33				30				30
Optometric Tech	7				12				7				5		
Opticianry	18				9				1				11		
COLLEGE TOTAL	25	21	33		21	30	33		8	22	30		16	25	30

DEGREES CONFERRED BY PROGRAM

ACADEMIC YEAR (SUMMER QUARTER - SPRING QUARTER)

	1989-90				1990-91				1991-92				1992-93		
	AS	BS	MS		AS	BS	MS		AS	BS	Pharm D		AS	BS	Pharm D
PHARMACY															
Pharmacy		127				104				108	6			138	5
COLLEGE TOTAL		127				104				108	6			138	5

DEGREES CONFERRED BY PROGRAM

ACADEMIC YEAR (SUMMER QUARTER - SPRING QUARTER)

	1989-90			1990-91			1991-92			1992-93		
	AS	BS	MS	AS	BS	MS	AS	BS	MS	AS	BS	MS
TECHNOLOGY												
AUTOMOTIVE												
Auto Machine Tech	12			8			17			10		
Auto Service Tech	64			64			74			58		
Automotive Body	15			23			24			16		
Heavy Duty Eng Tech	4			1			2			6		
Heavy Equipment Serv	35			26			30			43		
Auto & Heavy Equip Mgt	—	59		—	53		—	56		—	73	
TOTAL	130	59		122	53		147	56		133	73	
Auto Mach Tech (Cont)							1					
CONSTRUCTION												
Aerial Mapping Tech	4			2			1			0		
Architectural Tech	27			45			36			38		
Building Const Tech	34			26			35			49		
Construction Eng Tech	9			4			13			13		
Heating Refg & Air Cond	44			42			27			34		
Surveying Tech	4			1			3			5		
Facilities Management					7			11			12	
HVACR Eng Tech					16			13			16	
Construction Management		24			13			29			34	
Energy Management		11			1							
Surveying	—	15		—	12		—	22		—	15	
TOTAL	122	50		120	49		115	75		139	77	
ELECT/ELECTRONICS												
Avionics Tech	8			1								
Broadcast Elect Tech					1							
Electrical Power Tech												
Industrial Elect Tech	30			32			24			24		
Radio & TV Serv	2						1					
Electrical/Electronics Eng	—	21		—	20		—	20		—	15	
TOTAL	40	21		33	21		25	20		24	15	

	1989-90			1990-91			1991-92			1992-93		
	AS	BS	MS	AS	BS	MS	AS	BS	MS	AS	BS	MS
TECHNOLOGY												
COMP AIDED DESIGN*												
Cosmetology	1									1		
Mechanical Eng Tech										17		
Tech Drafting/Tool Design	6			2						44		
Tech Illustration	—			—						6		
TOTAL	7			2						68		
GRAPHIC ARTS												
Printing Tech	58			54			50			54		
Printing Management	—	30		—	19		—	29		—	21	
TOTAL	58	30		54	19		50	29		54	21	
Graphic Reproduction (Certificate)				1								
INDUSTRIAL*												
Comp Numerical Control	1			1								
Mach Tool Technology	25			1								
Plastics Technology	59			44			47			79		
Welding Technology	18			17			20			21		
Manufacturing Tech					2			4				
Mfg Tooling Tech				21			20			28		
Manufacturing Eng Tech		23			29			25			23	
Plastics Engineering Tech		36			42			52			49	
Product Design Eng Tech		14			14			19			31	
Welding Eng Technology		9			16			10			9	
Mech Eng Technology	15			8			6					
Tech Draft/Tool Design	1			32			37					
Technical Illustration	29			18			15					
TOTAL	148	82		142	103		145	110		128	112	
Mfg Tooling Tech (Certificate)				1								
Welding Tech (Certificate)							1			1		
COLLEGE TOTAL	505	242		473	245		482	290	0	546	298	0

*(NOTE: Industrial and CAD were combined to create a new dept, Manufacturing Engineering Technology in 1990-91)

CERTIFICATES

Auto Machine Tech							1					
Graphic Reproduction				1								
Manufacturing Tooling Tech				1								
Welding Tech							1			1		

Source: REGR2456, Report for Year End

DEGREES CONFERRED AT FERRIS STATE UNIVERSITY

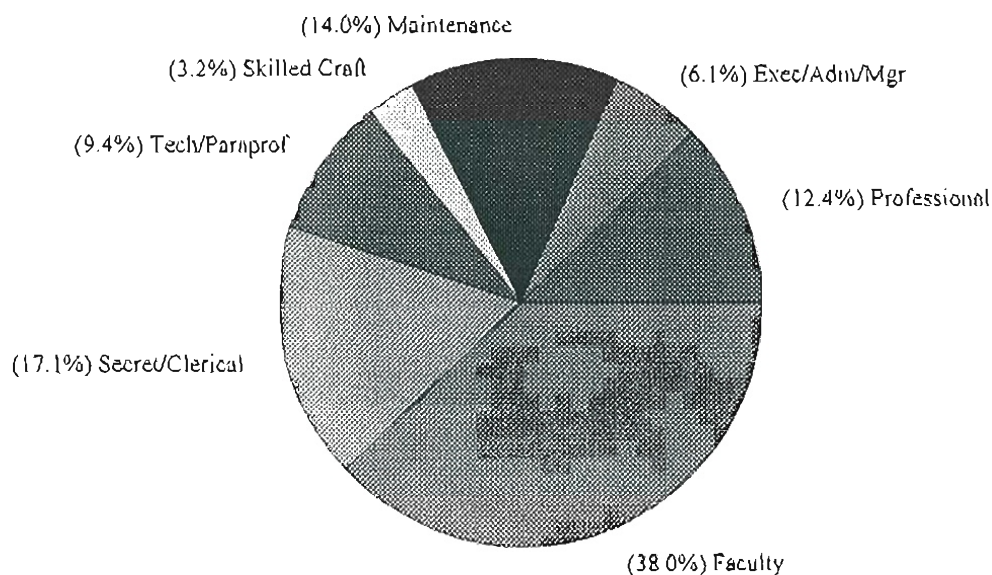
ACADEMIC YEAR (SUMMER QUARTER - SPRING QUARTER)

	CERTIFICATE	ASSOCIATE	BACHELOR	MASTERS	DOCTORATE
1986-1987	5	1,119	1,514	15	30
1987-1988	3	1,040	1,521	20	35
1988-1989	2	1,040	1,559	32	30
1989-1990	6	1,177	1,721	27	33
1990-1991	9	1,107	1,662	31	33
1991-1992	13	1,156	1,790	36	36
1992-1993	7	1,295	1,898	38	35

Source: REGR 2456, Report for Year End

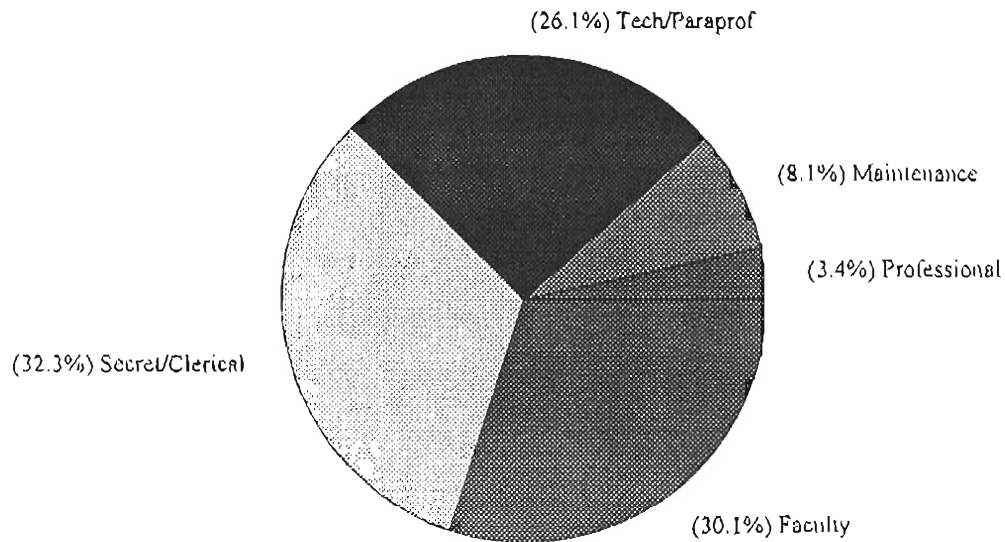
Faculty/Staff

UNIVERSITY STAFF BY JOB CATEGORY AND SEX FULL-TIME



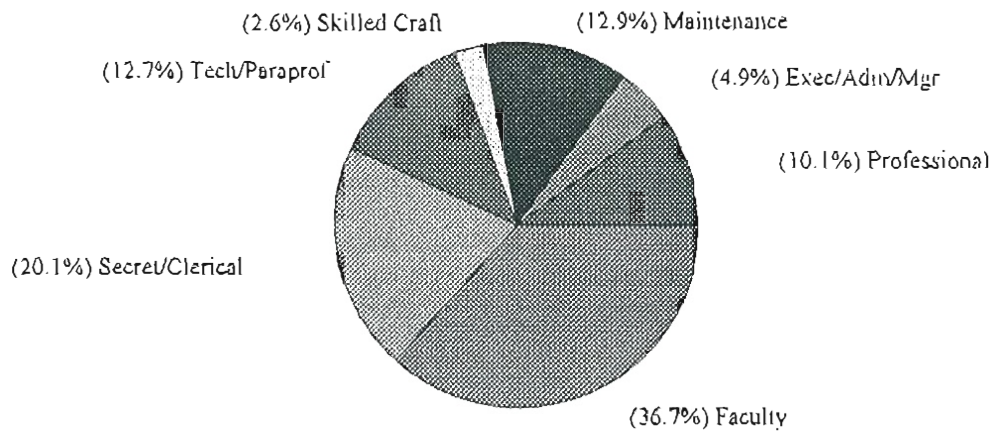
JOB CATEGORY	MALE		FEMALE		TOTAL	
	NUMBER	PERCENT	NUMBER	PERCENT	NUMBER	PERCENT
Professional	99	58.9%	69	41.1%	168	12.4%
Exec/Adm/Mgr	71	86.6%	11	13.4%	82	6.1%
Faculty	385	74.9%	129	25.1%	514	38.0%
Secret/Clerical	4	1.8%	227	98.3%	231	17.1%
Tech/Paraprof	60	47.2%	67	52.8%	127	9.4%
Skilled Craft	42	97.7%	1	2.3%	43	3.2%
Maintenance	93	49.2%	96	50.8%	189	14.0%
TOTAL	754	55.7%	600	44.3%	1,354	100.0%

UNIVERSITY STAFF BY JOB CATEGORY AND SEX PART-TIME



JOB CATEGORY	MALE		FEMALE		TOTAL	
	NUMBER	PERCENT	NUMBER	PERCENT	NUMBER	PERCENT
Professional	5	45.5%	6	54.5%	11	3.4%
Faculty	49	50.5%	48	49.5%	97	30.1%
Secret/Clerical	1	1.0%	103	99.0%	104	32.3%
Tech/Paraprof	30	35.7%	54	64.3%	84	26.1%
Maintenance	18	69.2%	8	30.8%	26	8.1%
TOTAL	103	32.0%	219	68.0%	322	100.0%

UNIVERSITY STAFF BY JOB CATEGORY AND SEX TOTAL



JOB CATEGORY	MALE		FEMALE		TOTAL	
	NUMBER	PERCENT	NUMBER	PERCENT	NUMBER	PERCENT
Professional	104	58.1%	75	41.9%	179	10.7%
Exec/Adm/Mgr	71	86.6%	11	13.4%	82	4.9%
Faculty	434	71.0%	177	29.0%	611	36.5%
Secret/Clerical	5	1.5%	330	98.5%	335	20.0%
Tech/Paraprof	90	42.7%	121	57.3%	211	12.6%
Skilled Craft	42	97.7%	1	2.3%	43	2.6%
Maintenance	111	51.6%	104	48.4%	215	12.8%
TOTAL	857	51.1%	819	48.9%	1,676	100.0%

Source: Ferris State University, 1993 Higher Education Staff Info. EEO-6 Report
Dated 9/8/93

**FERRIS STATE UNIVERSITY
DISTINGUISHED TEACHER AWARDS**

The Ferris State University Academic Senate oversees the selection of the Distinguished Teacher Awards. Teachers receiving this award have been nominated by their peers based on the following criteria: teaching excellence; participation in professional development activities; Interest in students outside the classroom/laboratory; and exhibiting distinction as a member of the college community.

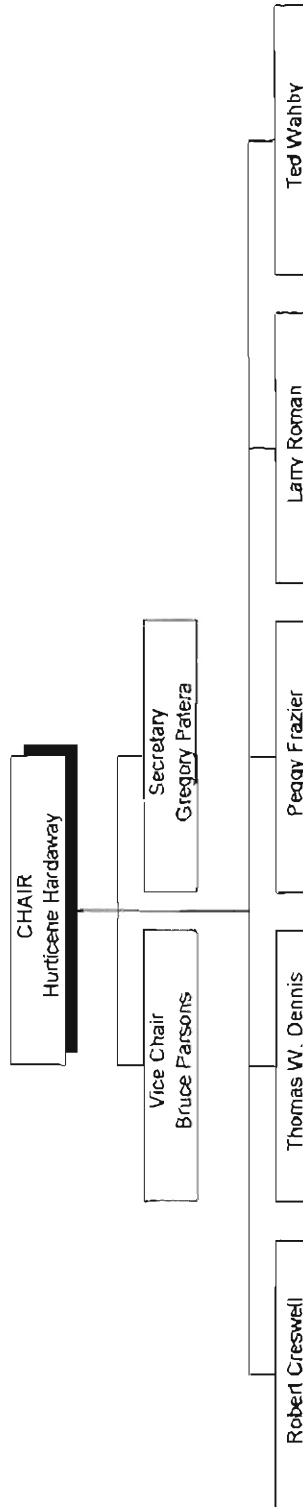
YEAR	AWARD RECIPIENT	COLLEGE
1963	Ralph E. Patullo	Arts and Sciences
1964	June B. Carr	Arts and Sciences
1965	Marguerite Jeserich	Arts and Sciences
1966	George Wells	Arts and Sciences
1967	Garnet Zimmerman	Technology
1968	Karlis Kazerovskis	Pharmacy
1969	Frank Karas	Arts and Sciences
1970	Robert K. Harry	Arts and Sciences
1971	Kenneth O. McManis	Arts and Sciences
1972	George N. Holcomb	Pharmacy
1973	Richard Hunter	Allied Health
1974	Roger F. Kennedy	Technology
1975	Everett J. Nienhouse	Arts and Sciences
1976	Barbara Sengelaub	Allied Health
1977	Max T. Yoley	Technology
1978	Richard L. Shaw	Technology
1979	Joseph J. Mitala	Pharmacy
1980	Sidney P. Sytsma	Business
1981	Richard A. Santer	Arts and Sciences
1982	Michael D. Ellis	Allied Health
1982	Neill H. Nutter	Arts and Sciences
1983	Herbert L. Carson	Arts and Sciences
1984	Robert E. Friar	Arts and Sciences
1984	Newell H. Johnson	Technology
1985	Julia H. Bonkowski	Allied Health
1985	James P. Lehnert	Arts and Sciences
1986	Ada Lou Carson	Arts and Sciences
1987	Michael C. Cooper	Business
1987	Rose Ann Swartz	Business
1988	Robert C. Ferguson	Arts and Sciences
1988	Garth S. McHattie	Education
1989	Mark A. Curtis	Technology
1989	James D. Maas	Business
1990	Dr. Marilyn Keigley	Business
1990	Christine Towner	Allied Health
1991	Dr. Roxanne M. Cullen	Arts & Sciences
1991	Gary C. Horn	Arts & Sciences
1992	Bruce L. Beetley	Arts & Sciences
1992	John H. Landis	Allied Health Sciences
1993	Doug Fonner	Arts & Sciences
1993	Terry Nerbonne	Education

Source: Academic Senate

Organizational Charts

Current as of January 1994

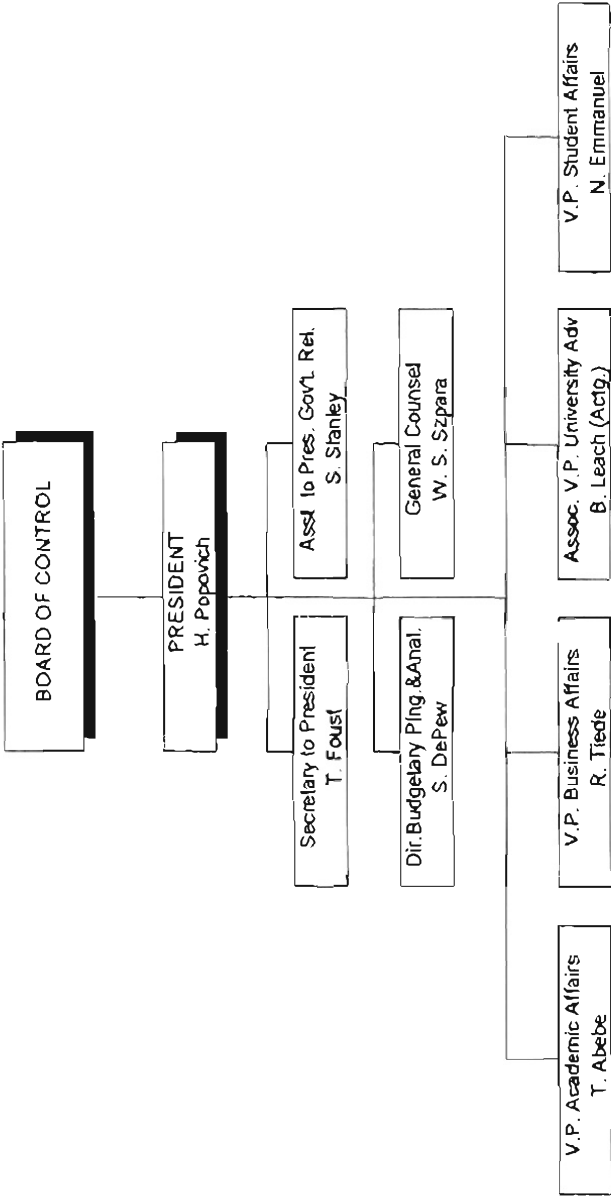
FERRIS STATE UNIVERSITY
BOARD OF CONTROL



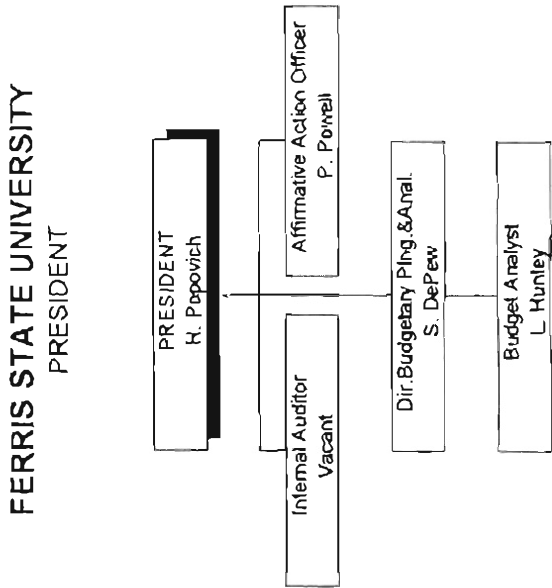
ORGANIZATIONAL CHARTS

Current as of January 1994

FERRIS STATE UNIVERSITY
BOARD OF CONTROL/PRESIDENT



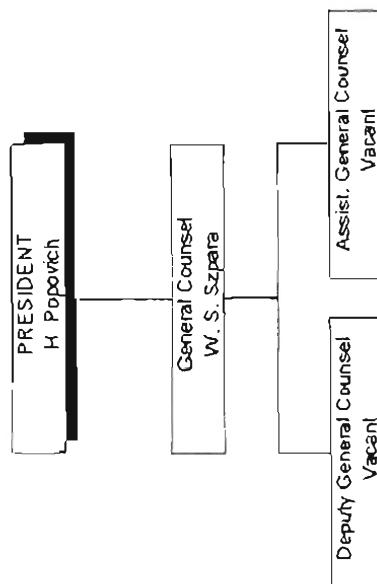
Current as of January 1994



ORGANIZATIONAL CHARTS

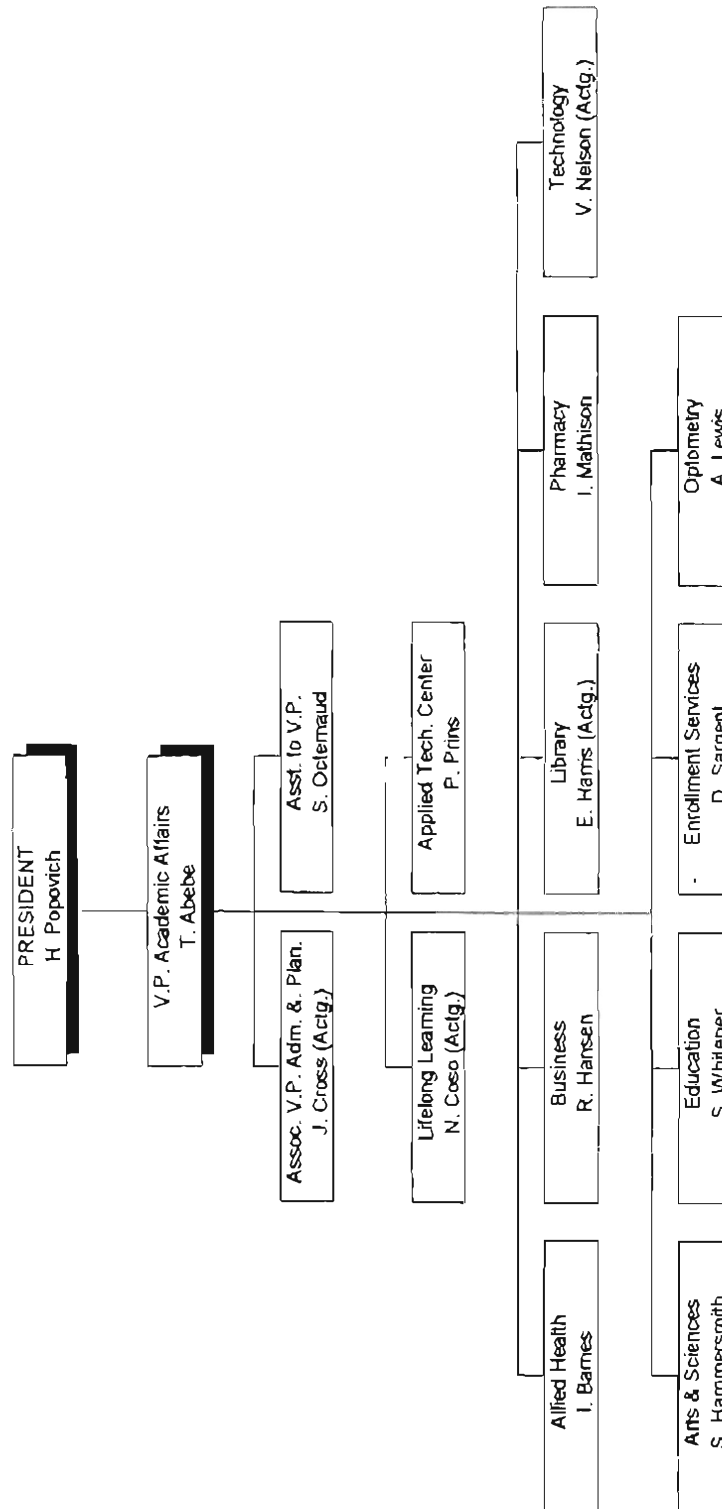
Current as of January 1994

FERRIS STATE UNIVERSITY OFFICE OF LEGAL AFFAIRS



Current as of January 1994

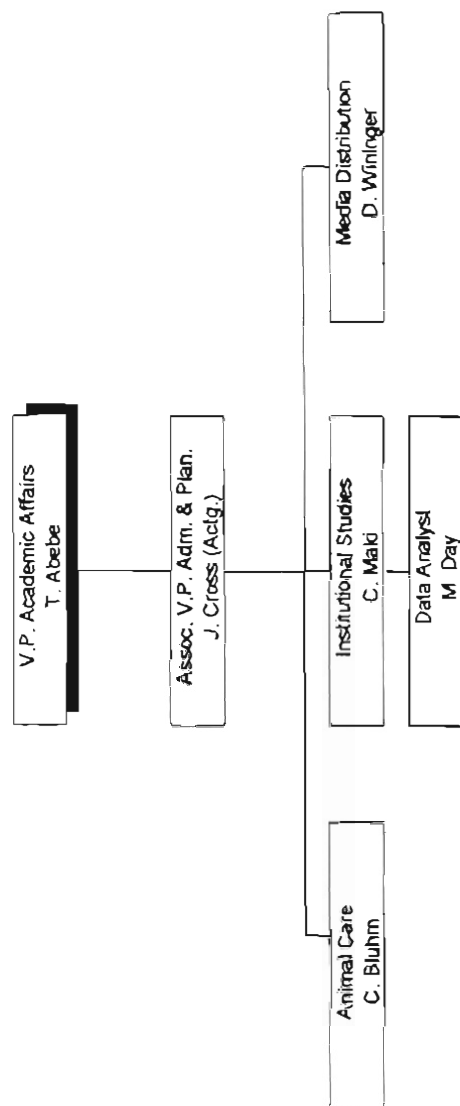
FERRIS STATE UNIVERSITY
ACADEMIC AFFAIRS DIVISION



ORGANIZATIONAL CHARTS

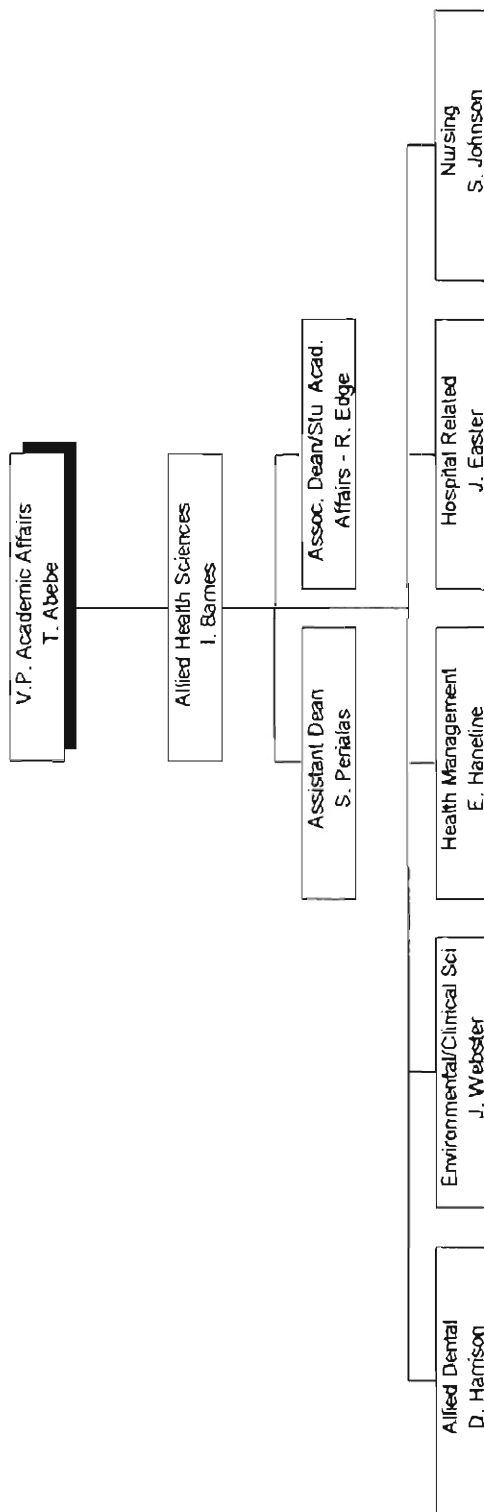
Current as of January 1994

FERRIS STATE UNIVERSITY OFFICE OF ACADEMIC AFFAIRS



Current as of January 1994

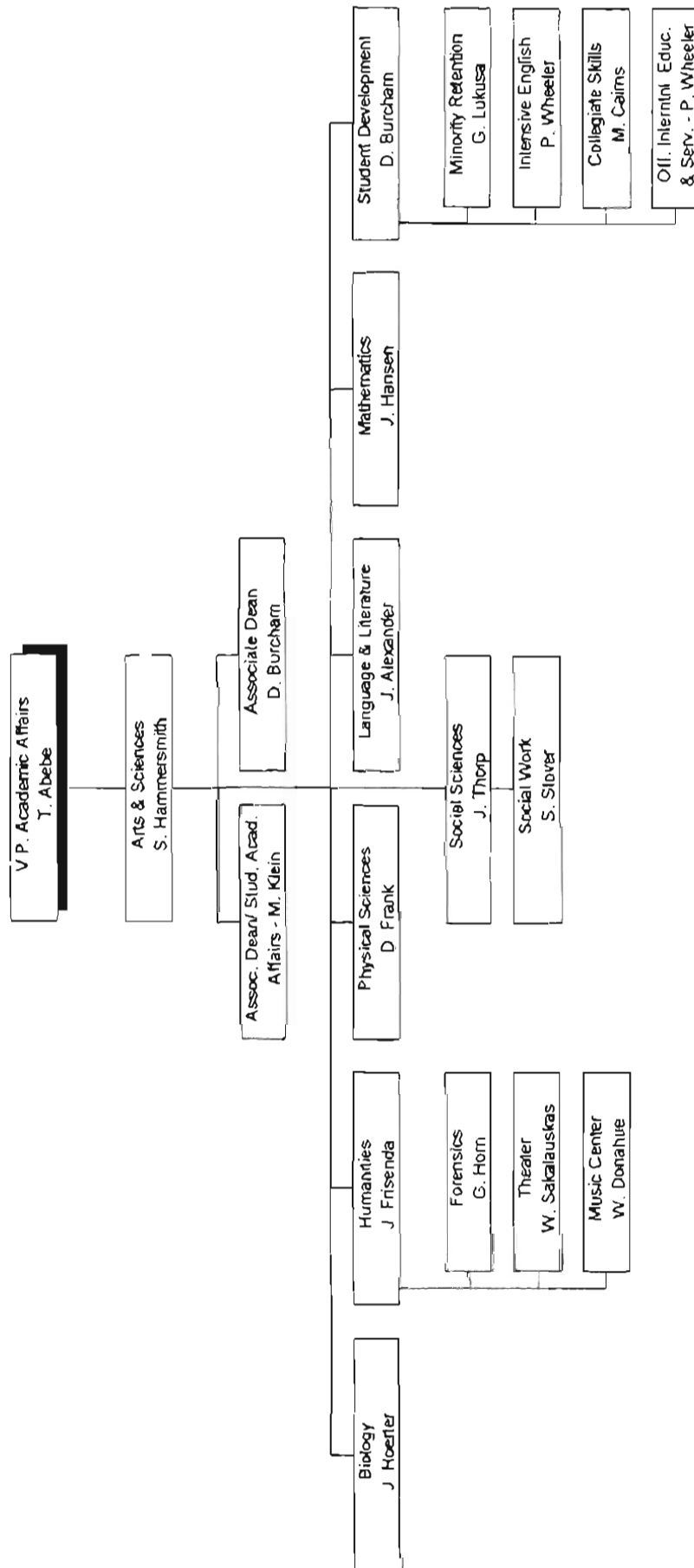
FERRIS STATE UNIVERSITY
ACADEMIC AFFAIRS DIVISION
COLLEGE OF ALLIED HEALTH SCIENCES



ORGANIZATIONAL CHARTS

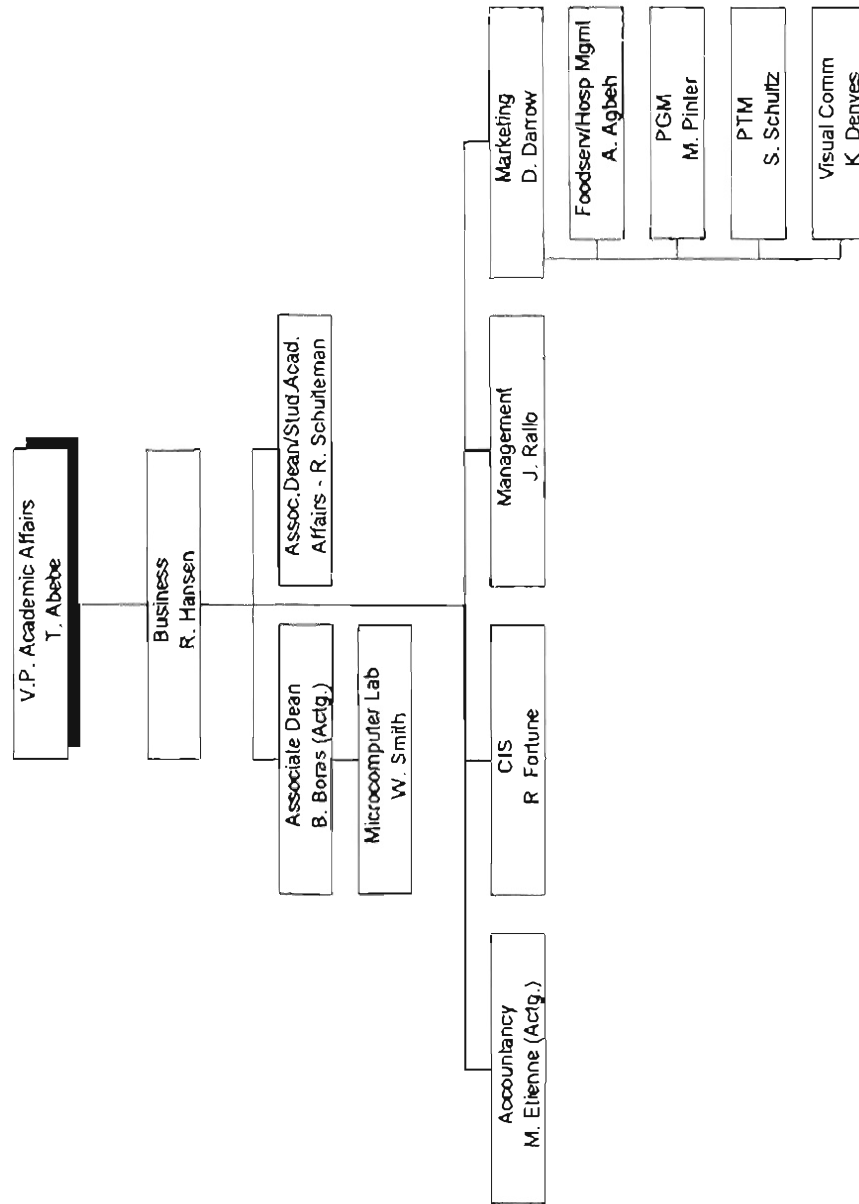
Current as of January 1994

FERRIS STATE UNIVERSITY ACADEMIC AFFAIRS DIVISION COLLEGE OF ARTS & SCIENCES



Current as of January 1994

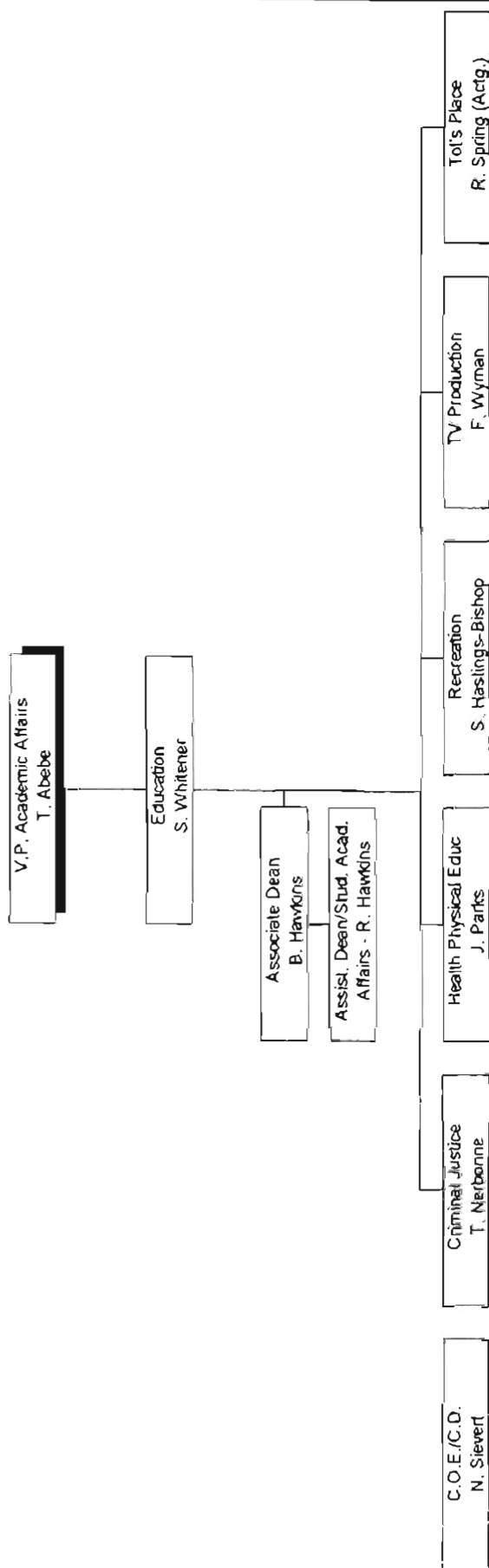
FERRIS STATE UNIVERSITY ACADEMIC AFFAIRS DIVISION COLLEGE OF BUSINESS



ORGANIZATIONAL CHARTS

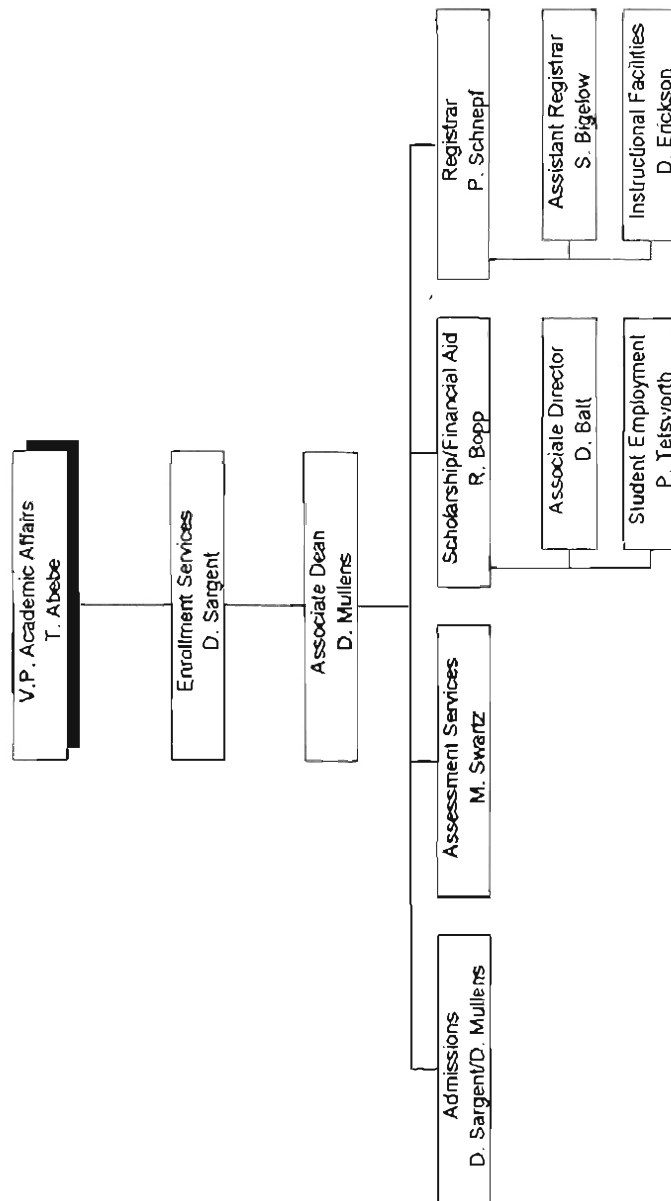
Current as of January 1994

FERRIS STATE UNIVERSITY ACADEMIC AFFAIRS DIVISION COLLEGE OF EDUCATION



Current as of January 1994

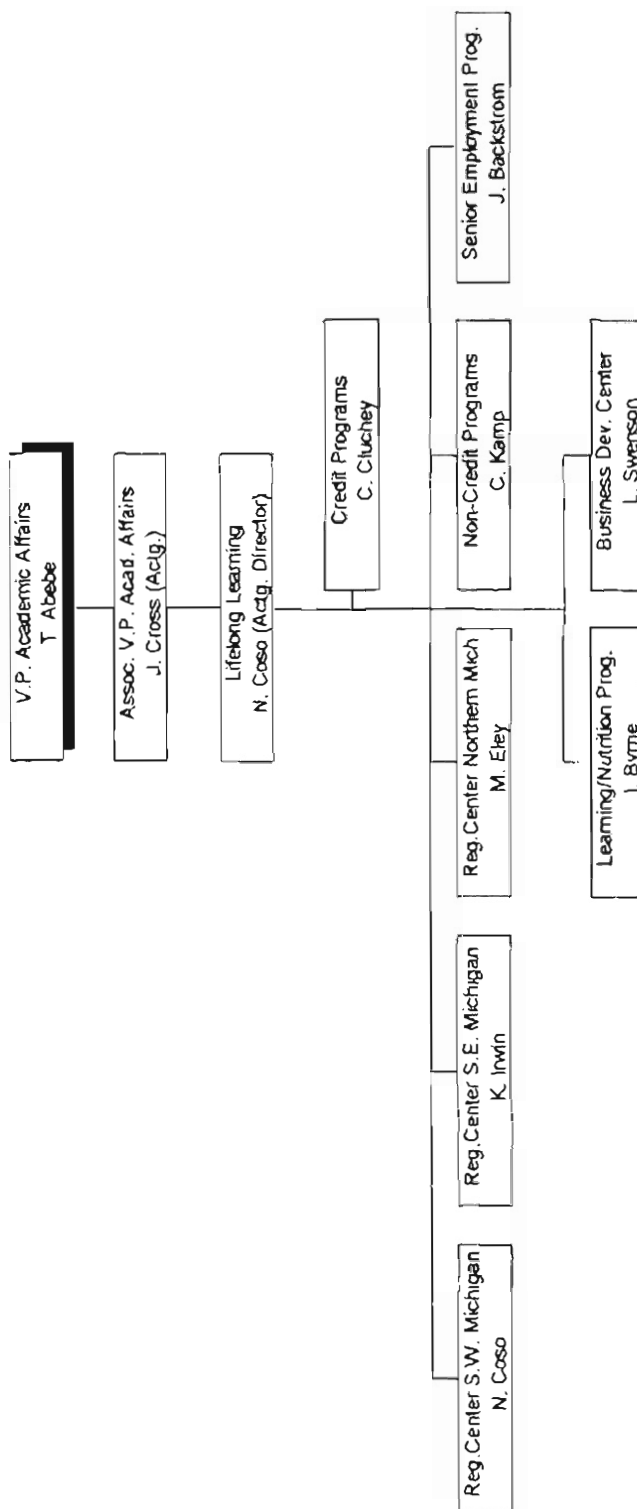
FERRIS STATE UNIVERSITY
ACADEMIC AFFAIRS DIVISION
ENROLLMENT SERVICES



ORGANIZATIONAL CHARTS

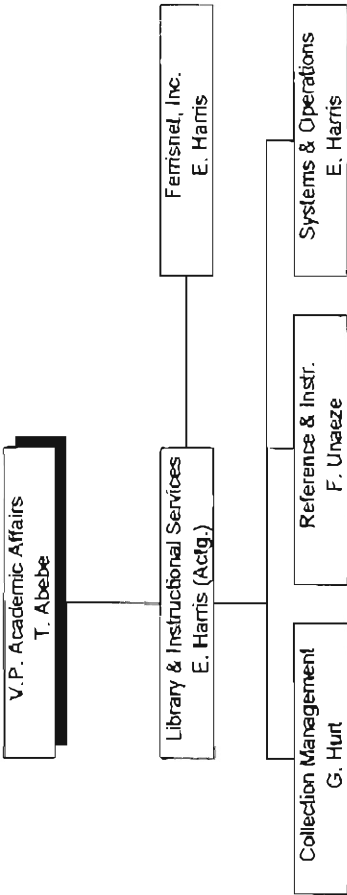
Current as of January 1994

FERRIS STATE UNIVERSITY ACADEMIC AFFAIRS DIVISION LIFELONG LEARNING



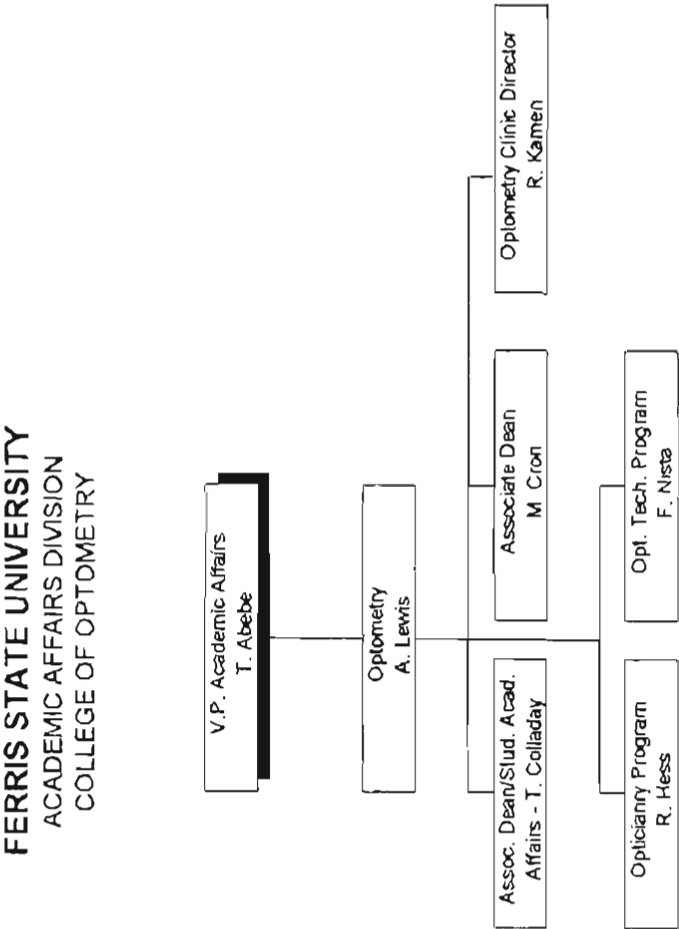
Current as of January 1994

FERRIS STATE UNIVERSITY
ACADEMIC AFFAIRS DIVISION
LIBRARY & INSTRUCTIONAL SERVICES



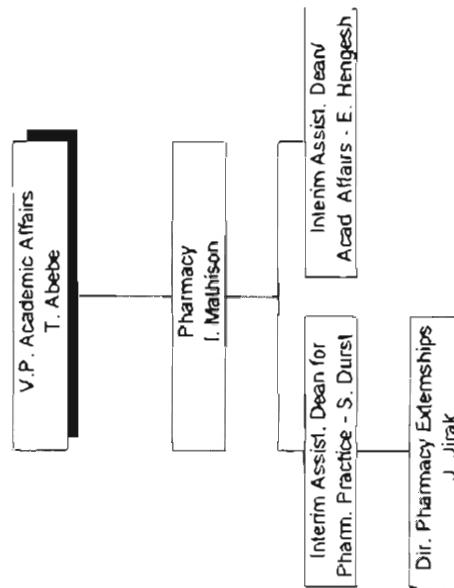
ORGANIZATIONAL CHARTS

Current as of January 1994



Current as of January 1994

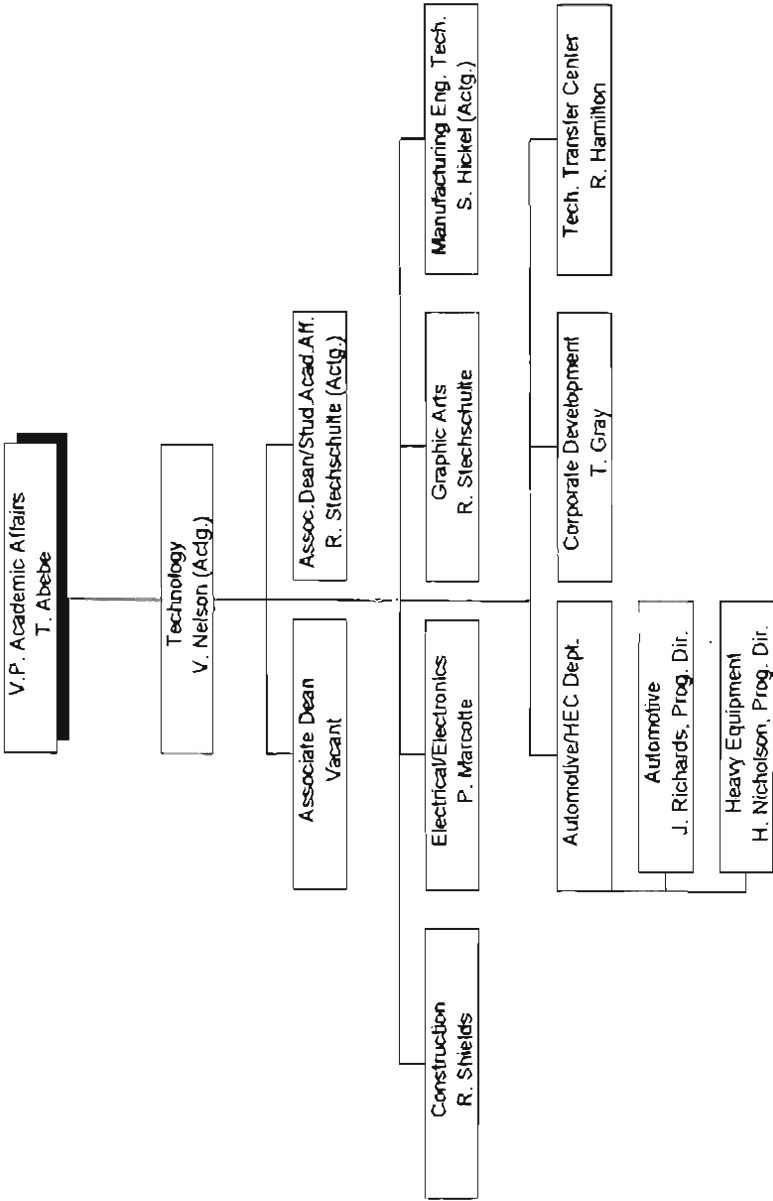
FERRIS STATE UNIVERSITY
ACADEMIC AFFAIRS DIVISION
COLLEGE OF PHARMACY



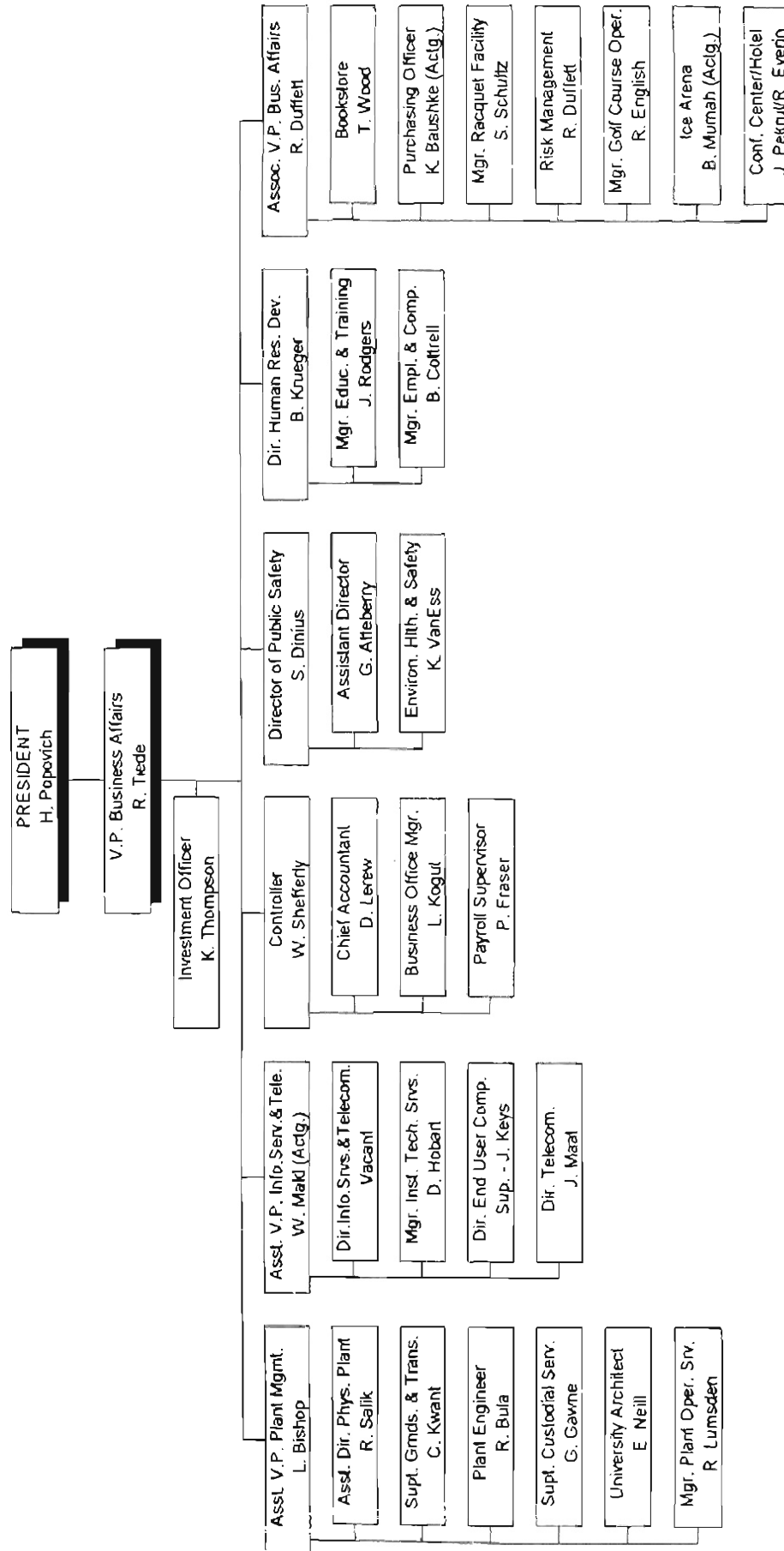
ORGANIZATIONAL CHARTS

Current as of January 1994

FERRIS STATE UNIVERSITY
ACADEMIC AFFAIRS DIVISION
COLLEGE OF TECHNOLOGY



FERRIS STATE UNIVERSITY
BUSINESS AFFAIRS DIVISION

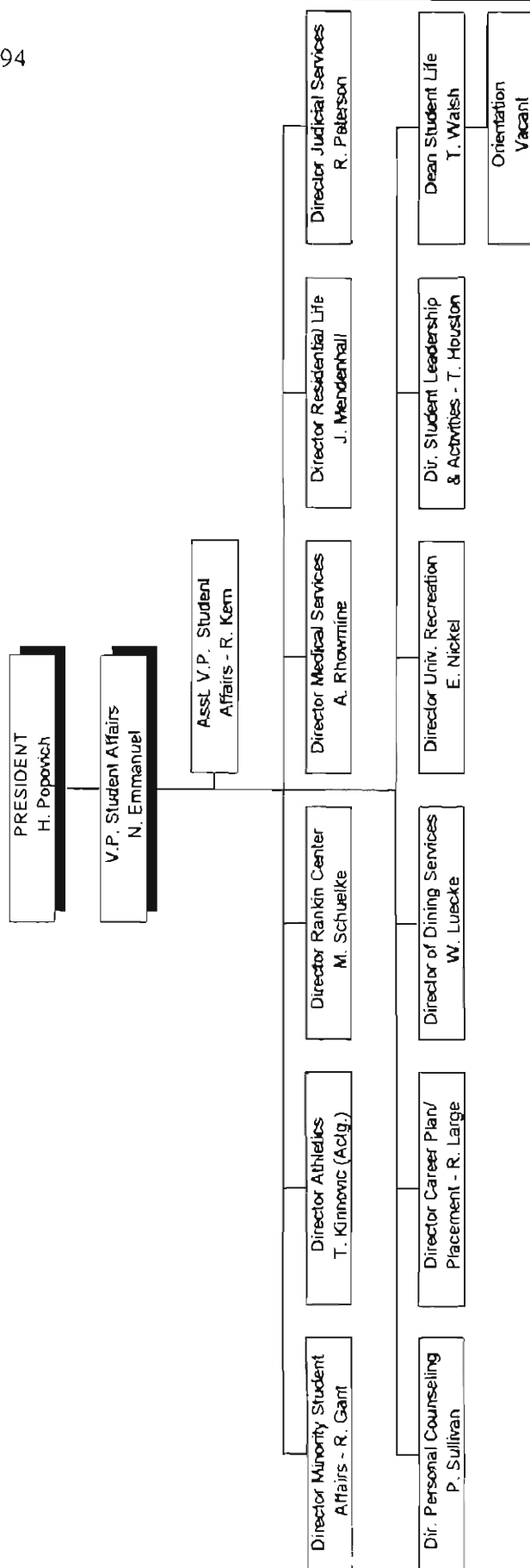


Current as of
January 1994

ORGANIZATIONAL CHARTS

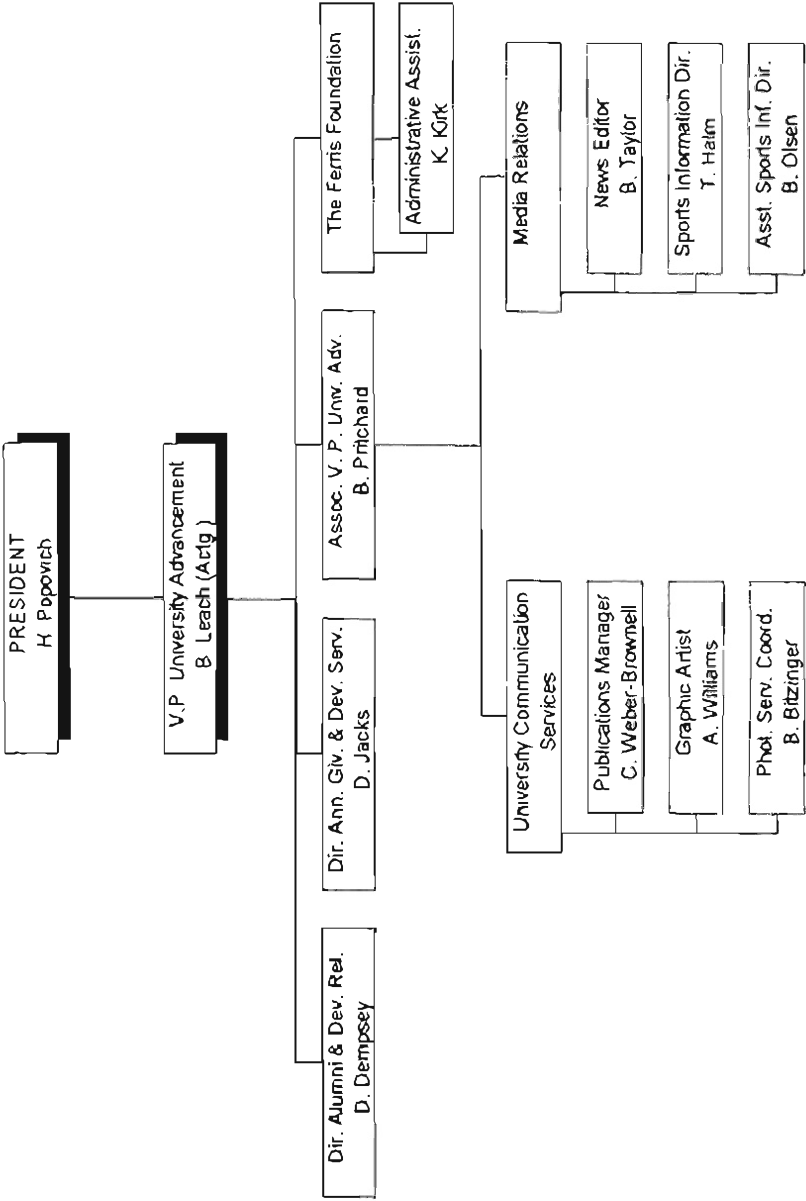
Current as of January 1994

FERRIS STATE UNIVERSITY STUDENT AFFAIRS DIVISION



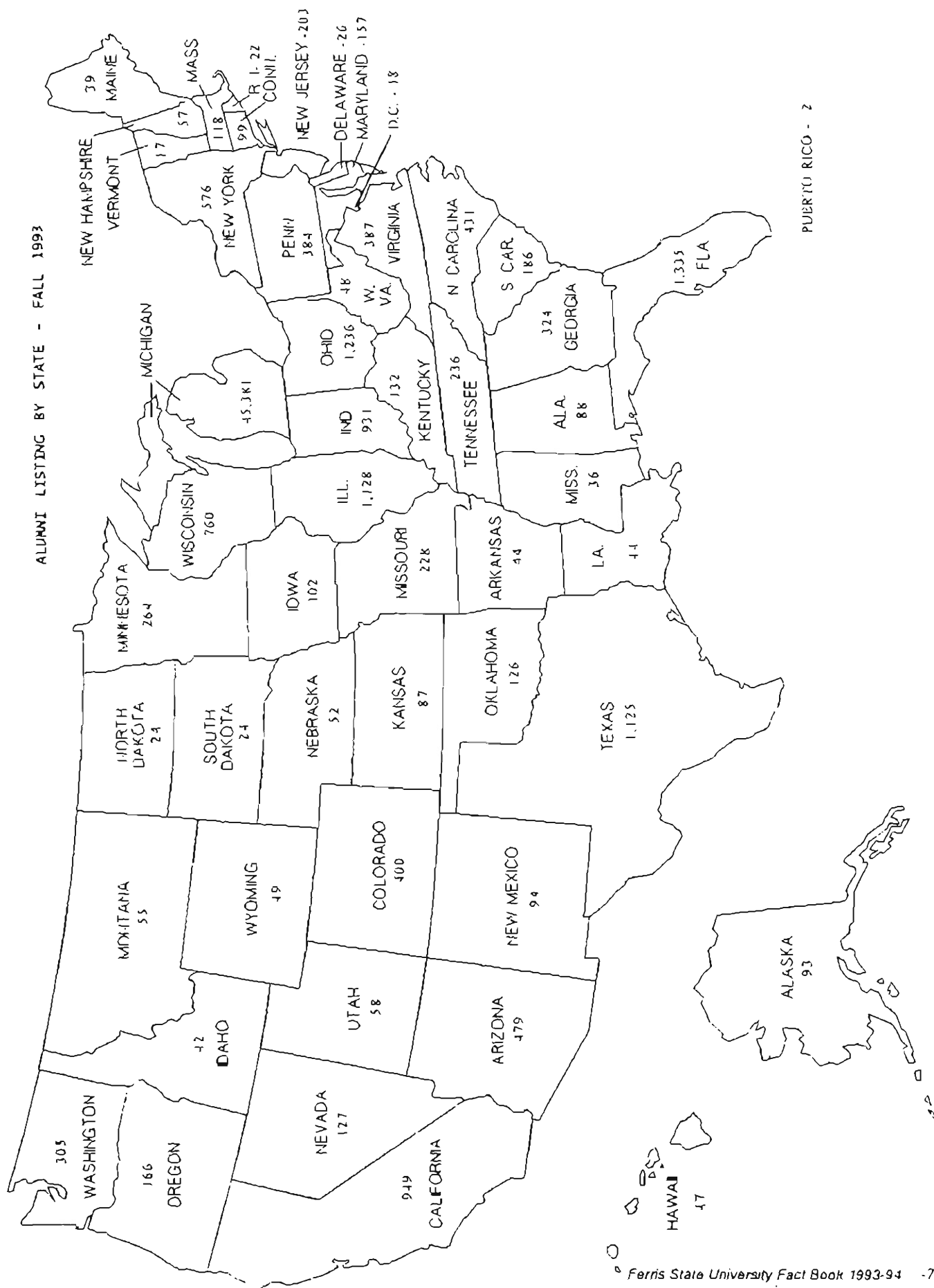
Current as of January 1994

FERRIS STATE UNIVERSITY
UNIVERSITY ADVANCEMENT DIVISION



Alumni

ALUMNI LISTING BY STATE - FALL 1993



FERRIS STATE UNIVERSITY

SUMMARY OF PLACEMENT ACTIVITY FOR 1991-92 GRADUATES

SCHOOL/DEGREE	EMPLOYED				CONTINUING EDUCATION										Seeking Employment		UNKNOWN NUMBER	RESPONSE RATE %	TOTAL GRADS NO.
	FERRIS		OTHER INSTITUTION																
	Related Field NO.	%	Unrelated NO.	%	Undergrad. NO.	%	Graduate NO.	%	Undergrad. NO.	%	Graduate NO.	%	Not Seeking Employment NO	%	TOTAL RESPONSE NUMBER				
ALLIED HEALTH SCI Baccalaureate Associate	103	77.4	12	9.0	2	1.5	0	0.0	0	0.0	6	4.5	2	1.5	8	6.0	133	85.3	156
	104	58.1	7	3.9	54	30.2	0	0.0	5	2.8	0	0.0	2	1.1	7	3.9	179	79.2	226
ARTS & SCIENCES Baccalaureate Associate	36	42.4	8	9.4	6	7.1	2	2.4	0	0.0	13	15.3	1	1.2	19	22.4	85	81.0	105
	21	13.6	8	5.2	109	70.8	1	0.6	12	7.8	0	0.0	1	0.6	2	1.3	154	90.6	170
BUSINESS Masters Baccalaureate Associate	3	50.0	0	0.0	0	0.0	0	0.0	0	0.0	0	0.0	0	0.0	3	50.0	6	60.0	10
	380	57.1	121	18.2	6	0.9	8	1.2	2	0.3	8	1.2	6	0.9	134	20.2	665	79.1	841
	29	16.3	9	5.1	124	69.7	0	0.0	8	4.5	0	0.0	0	0.0	8	4.5	178	86.8	205
EDUCATION Masters Baccalaureate Associate	19	95.0	0	0.0	0	0.0	0	0.0	0	0.0	0	0.0	0	0.0	1	5.0	20	76.9	26
	135	58.7	36	15.7	2	0.9	0	0.0	0	0.0	3	1.3	0	0.0	54	23.5	230	84.2	273
	11	22.0	5	10.0	26	52.0	0	0.0	5	10.0	0	0.0	0	0.0	3	6.0	50	78.1	64
OPTOMETRY O.D. Baccalaureate Associate	21	91.3	1	4.3	0	0.0	0	0.0	0	0.0	0	0.0	0	0.0	1	4.3	23	76.7	30
	0	0.0	0	0.0	0	0.0	21	100.0	0	0.0	0	0.0	0	0.0	0	0.0	21	100.0	21
	6	85.7	0	0.0	1	14.3	0	0.0	0	0.0	0	0.0	0	0.0	0	0.0	7	87.5	8
PHARMACY Pharm.D. Baccalaureate	3	100.0	0	0.0	0	0.0	0	0.0	0	0.0	0	0.0	0	0.0	0	0.0	3	50.0	6
	78	98.7	0	0.0	0	0.0	0	0.0	0	0.0	0	0.0	1	1.3	0	0.0	79	73.1	108
TECHNOLOGY Baccalaureate Associate	205	83.0	16	6.5	1	0.4	0	0.0	0	0.0	1	0.4	0	0.0	24	9.7	247	85.2	290
	113	26.0	8	1.8	283	65.1	0	0.0	16	3.7	0	0.0	0	0.0	15	3.4	435	91.0	478
TOTAL/AVG. % Placement for 90-91 Graduates	1,267	50.4	231	9.2	614	24.4	32	1.3	48	1.9	31	1.2	13	0.5	279	11.1	2,515	83.4	3,017
	1,188	51.1	169	7.3	545	23.4	37	1.6	61	2.6	23	1.0	23	1.0	281	12.1	2,327	82.5	2,822

Source: 1991-1992 Graduates and Their Beginning Salaries
Career Planning and Placement Services

**FERRIS STATE UNIVERSITY
BEGINNING ANNUAL SALARIES FOR BACCALAUREATE GRADUATES
FOR THE YEAR 1991-1992**

<u>SCHOOL/CURRICULUM</u>	<u>NUMBER REPORTING</u>	<u>AVERAGE SALARY</u>	<u>80% RANGE</u>	
			<u>HIGH</u>	<u>LOW</u>
ALLIED HEALTH				
Ind & Env Health Mgt	7	23,714	28,000 -	21,000
Medical Record Adm	12	22,621	26,000 -	18,720
Medical Technology	8	24,702	26,000 -	24,170
Nuclear Medicine Tech	5	31,920	31,720 -	31,200
ARTS & SCIENCES				
Social Work	13	17,533	22,300 -	9,620
BUSINESS				
Accounting	15	23,832	31,000 -	17,000
Advertising	5	16,904	20,000 -	13,520
Business Administration	42	20,052	25,000 -	15,600
Computer Info Systems	27	28,516	31,000 -	25,000
Finance	8	20,833	28,100 -	15,000
Hospitality Management	10	22,370	24,000 -	21,000
Management	16	23,335	30,000 -	14,560
Marketing	14	22,511	29,000 -	16,000
Marketing/Pro Golf Mgt	13	16,984	20,000 -	12,740
Marketing/Sales	12	23,562	30,000 -	17,000
Small Business Management	5	20,428	22,000 -	18,720
EDUCATION				
Criminal Justice	23	20,319	25,480 -	13,520
Teacher Education	12	23,953	26,400 -	22,530
OPTOMETRY	N/A			
PHARMACY				
Registered Status	52	44,195	48,880 -	38,043
Intern Status	17	26,577	29,900 -	24,960
TECHNOLOGY				
Auto & Heavy Equip Mgt	28	26,841	30,000 -	23,400
Construction Mgt	18	23,644	28,000 -	20,000
Elec/Eltr Eng Tech	6	24,883	26,000 -	23,920
HVACR Engr Tech	11	27,620	30,000 -	23,900
Manufacturing Engr Tech	14	29,243	34,000 -	24,960
Plastics Engr Tech	25	30,910	35,000 -	26,000
Printing Management	5	21,622	24,000 -	18,720
Product Design Engr Tech	7	29,623	34,000 -	24,000
Surveying Eng	14	25,238	32,000 -	20,800
Welding Engineering Tech	7	31,517	32,240 -	29,500

NOTE: Salary tables include only the curriculum in which five or more students reported working in a field related to their major.
Figures do not include any incentive income over and above base salary.

Source: 1991-1992 Graduates and Their Beginning Salaries

RECIPIENTS OF ALUMNI AWARDS

Since 1956, Commencement week activities have included the presentation by the Ferris State University Alumni Association of Distinguished Alumni Awards recognizing exceptional career success and noteworthy fidelity and devotion to the University. Distinguished Alumni Award recipients are:

1956 Frederick L. Caldena Ralph Pino Nate S. Shapero	1965 Leo F. Duggan C. Gordon Phillips George C. Quinnell	1975 Rex O. Graff Fred Schnarr Chester I. Williams	1985 Jean D. Deupree Arnold L. Johnson Bruce N. Parsons
1957 Walter R. Braund Jean DeBoer Edward M. Sharpe	1966 L. Dale Faunce Carlton H. Runcieman	1976 S. John Byington Gerald L. DeHaan Clare G. Johnson H. James Renaud	1986 Richard L. Antonini Bertil G. Carlson Kenneth L. Cook Jack D. Lewis
1958 C. V. Burnett John H. Butts Ray M. Hardy Maurice C. LaClaire Charles W. Martin Fred B. Post W. C. Taggart Robert H. Wisner	1967 Albert F. Cleveland Roy A. Darling James C. Finney, Sr. Willard J. Nash	1977 James R. Hess Florence I. Holden Robert J. Norsworthy	1987 Maurice Q. Bectel Roger W. Anderson H. Kearney Walters
1959 Howard C. Grimes James T. Jones Willard J. Nash Arthur R. Sherk	1968 Norman E. Borgerson Ann W. Sawasky Reuben E. Trippensee	1978 Ruth Gibson Butler Leonard W. Gopp Robert C. Redman	1988 Marjorie L. Fleming George H. Ryan, Sr. Gordon E. Kamstra Charles E. Lippert
1960 Manley M. Ellis Thomas F. Heatley Thaddeus B. Taylor	1969 Carroll Boutell Elmon Cataline	1979 Peggy A. Frazier Thomas P. Scholler Lee A. Westberg	1989 Albert J. Coudron Kenneth W. Kirk George J. Menoutes Jerry R. Tubbs
1961 C. V. Buttleman Merta L. Reed Gideon E. Smith	1970 Charles E. Fairman Ethel Taylor Pierce John Stahlin	1980 E. Elaine Davies Kuno Hammerberg John F. Mangrum	1990 Philip E. Hoffman Dennis B. Lerner Roger G. Stoll Clinton L. Swinehart
1962 Walter Armbruster Joseph C. Hirschfield Hattie Smith Lear Baribeau	1971 Stanley J. Byington Gerald McKessy Raymond Sines	1981 Alvin L. Burridge Floyd E. Curtis Avls J. Ericson	1991 Darroll Z. Howard Jane Reagan Jones Kenneth E. McCourt
1963 Clare F. Jarecki Charles S. Neithercut John W. Tenny	1972 Clarence Freeman Delbert Long Ramsay Wardrop	1982 Howard L. Dell Jack M. Newcomb Rena D. Westra	1992 Paul E. Boyer Richard E. Hurst Carolyn C. Kilpatrick James Middaugh
1964 Bess Rose Fishman Lewie H. Hull J. Arthur Pino	1973 Bert C. Brennan Albert B. Doherty, III John W. Spicer Fred A. Westerman	1983 Douglas W. Call Darnell E. Cole Margaret Ethel Denise Elton "Ott" Gingrich	1993 Eugene A. DeFouw Douglas P. Johnson Barbara L. Ottinger Louis M. Sesti
	1974 Frank Curtis Phillip Runkel Colin Smith	1984 Richard C. Andresen Edmund D. Farhat Kenneth J. Hicks	

Source: Spring Commencement Program

Budget

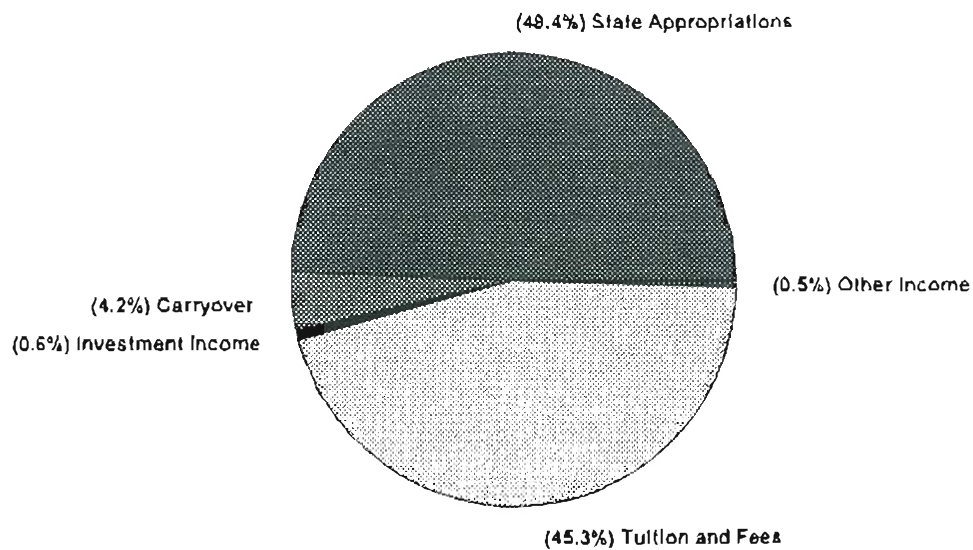
FERRIS STATE UNIVERSITY
FY-94 GENERAL FUND OPERATING BUDGET
 (AMOUNTS IN THOUSANDS)

<u>REVENUES</u>	<u>FY-94 OPERATING BUDGET</u>
STATE APPROPRIATIONS	\$41,856
TUITION/FEES	38,434
INVESTMENT INCOME	550
OTHER INCOME	405
	<hr/>
TOTAL REVENUES	\$81,245
CARRYOVER	3,547
	<hr/>
AVAILABLE FOR ALLOCATION	\$84,792
<u>EXPENDITURES</u>	
SALARY/WAGE/BENEFIT	\$68,565
RETIREMENT CONTRIBUTION	881
EARLY RETIREMENT PROGRAM	1,052
SUPPLY/EXPENSE	8,633
ATHLETIC FEE TRANSFER	369
DEFERRED MAINTENANCE	700
UTILITIES	2,135
STUDENT ASSISTANCE	2,228
EQUIPMENT	507
DESIGNATED PROGRAMS	425
BUDGET INITIATIVES	0
OFF CAMPUS PROGRAMS	1,697
	<hr/>
TOTAL EXPENDITURES	\$87,192
REVENUE/EXPENDITURE NET	(2,400)
COST REDUCTIONS/SAVINGS PLANNING	2,400
	<hr/>
BALANCE/SAVINGS TOTAL	\$0

Source: Budget Office, General Fund Operating Budget FY-93/94

**FERRIS STATE UNIVERSITY
REVENUE SUMMARY
(AMOUNTS IN THOUSANDS)**

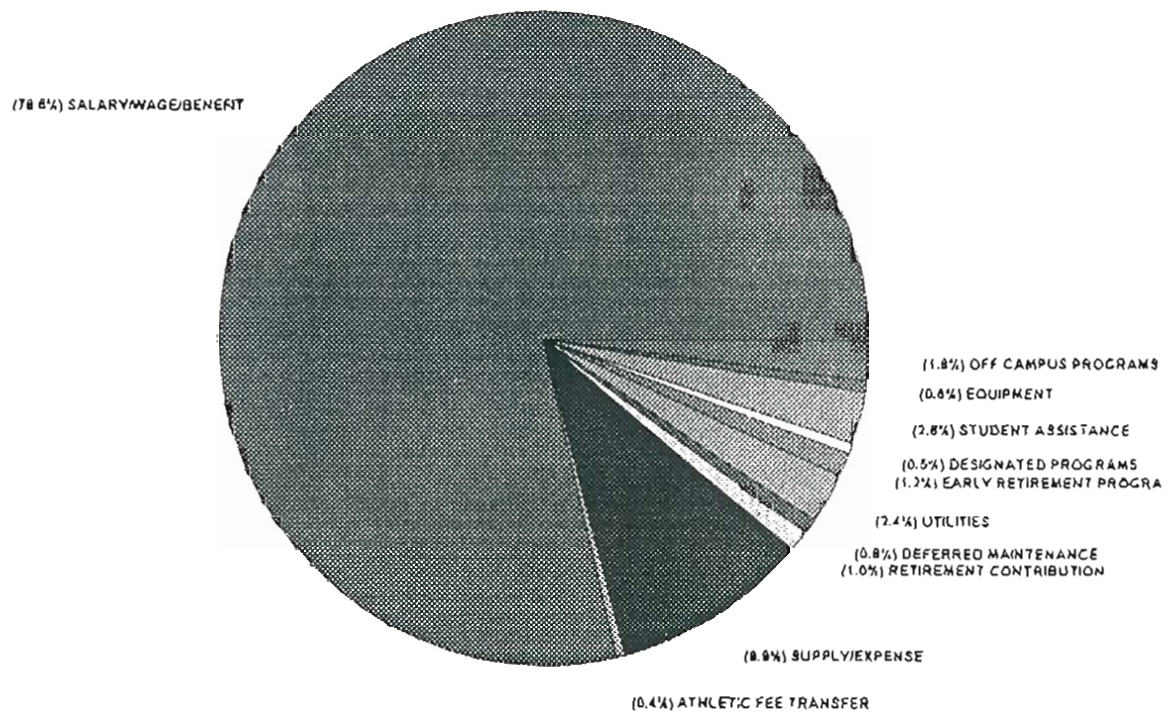
	AMOUNT	PERCENT
STATE APPROPRIATIONS	\$41,856	49.4%
INVESTMENT INCOME	550	0.6%
TUITION AND FEES	38,434	45.3%
OTHER INCOME	405	0.5%
CARRYOVER	3,547	4.2%
TOTAL	\$84,792	



Source: Budget Office, General Fund Operating Budget FY-93/94

**FERRIS STATE UNIVERSITY
EXPENDITURE SUMMARY
(AMOUNTS IN THOUSANDS)**

	AMOUNT	PERCENT
SALARY/WAGE/BENEFIT	\$68,565	78.6%
RETIREMENT CONTRIBUTION	881	1.0%
EARLY RETIREMENT PROGRAM	1,052	1.2%
SUPPLY/EXPENSE	8,633	9.9%
ATHLETIC FEE TRANSFER	369	0.4%
DEFERRED MAINTENANCE	700	0.8%
UTILITIES	2,135	2.4%
STUDENT ASSISTANCE	2,228	2.6%
EQUIPMENT	507	0.6%
DESIGNATED PROGRAMS	425	0.5%
BUDGET INITIATIVES	0	0.0%
OFF CAMPUS PROGRAMS	1,697	1.9%
TOTAL	\$87,192	



Source: Budget Office, General Fund Operating Budget FY 93/94

**BUDGETARY PLANNING AND ANALYSIS
SUMMARY OF 1993-94 TUITION/FEEES AND ROOM/BOARD
MICHIGAN PUBLIC UNIVERSITIES**

	FY-94 TUITION	TUITION RANK	FY-94 RM/BRD	ROOM/ BOARD RANK	FY-94 TOTAL COST	TOTAL COST RANK
University of Michigan	5,119	1	4,549	1	9,668	1
Michigan State	4,637	2	3,642	12	8,279	2
Michigan Tech	3,441	3	3,842	8	7,283	3
Lake Superior	3,200	7	3,987	3	7,187	4
Ferris	3,222	6	3,923	6	7,145	5
Western Michigan	3,156	8	3,938	4	7,094	6
Oakland	3,029	9	3,845	7	6,874	7
Eastern Michigan	2,799	14	4,031	2	6,830	8
Grand Valley	2,857	13	3,930	5	6,787	9
Central Michigan	2,901	11	3,836	9	6,737	10
Saginaw Valley	2,891	12	3,650	11	6,541	11
Northern Michigan	2,621	15	3,829	10	6,450	12
Wayne State	3,271	5				
UM - Flint	2,916	10				
UM - Dearborn	3,427	4				
UNWEIGHTED AVERAGE	3,299		3,917		7,240	

Sources: Presidents Council, State Universities of Michigan
Summary of Tuition/Housing Charges, 10/5/92

Facilities

SUMMARY OF FACILITIES OWNED OR RENTED BY FERRIS STATE UNIVERSITY

BUILDING	SQUARE FEET	CUBIC FEET	YEAR CONSTRUCTED OR IMPROVED
GENERAL FUNDED FACILITIES			
ALUMNI BUILDING	34,600	510,000	1929
AUTOMOTIVE CENTER	77,000	1,235,400	1956-88
BISHOP HALL	50,900	480,600	1968-87
BUSINESS BUILDING	90,600	700,000	1970
CARILLON TOWER	100	4,900	1968
CONSTRUCTION TECHNOLOGY	23,400	500,000	1962
CREATIVE ARTS	7,200	93,900	1965
DEPT OF PUBLIC SAFETY	4,400	35,000	1959-83
EWIGLEBEN SPORTS COMPLEX	39,800	567,950	1974-82
GENERAL SERVICES BLDG	27,143	490,330	1984-88
GROUPS FACILITIES	9,032	98,856	1979
HEALTH CENTER (50%)	9,200	91,250	1959-67
HEALTH & PHYS EDUC	96,300	2,220,000	1962
HEAVY EQUIPMENT TECH	52,000	1,188,000	1987
INSTR RESOURCE CENTER	54,700	630,000	1969
JOHNSON HALL	33,600	328,600	1959
LIBRARY	57,000	723,900	1967
MUSIC CENTER	10,000	137,900	1962
PENNOCK HALL	50,900	480,600	1968-77
PHARMACY BUILDING	62,200	1,214,300	1972
PLASTICS TECHNOLOGY	18,800	230,700	1987
POWER PLANT	19,900	421,900	1955-88
PRAKKEN BUILDING	42,100	503,900	1952
SCIENCE BUILDING	107,300	1,680,000	1955-67
STARR BUILDING	86,400	1,607,200	1962
SWAN BUILDING	131,600	1,685,400	1966-88
TOP TAGGART EAST	400	3,000	1965
TOP TAGGART WEST	800	6,000	1970
UNIVERSITY RESIDENCE	6,140	49,120	1958-84
VFS ALLIED HEALTH BLDG	67,400	1,493,800	1979
WEST BUILDING	23,700	292,500	1952-85
WEST COMMONS	19,800	269,300	1968
TOTAL GENERAL FUNDED	1,314,415	19,974,306	
FSU'S GRAND TOTAL	3,009,402	37,614,178	

Source: University Architect

SUMMARY OF FACILITIES OWNED OR RENTED BY FERRIS STATE UNIVERSITY

BUILDING	SQUARE FEET	CUBIC FEET	YEAR CONSTRUCTED OR IMPROVED
NON-GENERAL FUNDED FACILITIES			
BOND HALL	90,500	820,400	1966
BROPHY HALL	47,000	482,750	1962
CARLISLE HALL	47,200	423,000	1957
CLARION HOTEL COMPLEX	72,789	582,000	1990
CLARK HALL	41,500	360,900	1960
CONFERENCE CENTER	25,238	380,000	1990
COPY CENTER	3,380	34,400	1969
COUNTY STORAGE (RENTED)	20,000	240,000	1989
CRAMER HALL	91,700	824,700	1969
EAST CAMPUS APARTMENTS	72,600	636,200	1955
HALLISY HALL	44,700	406,000	1958
HEALTH CENTER (50%)	9,200	91,250	1959-67
HELEN FERRIS HALL	44,300	383,000	1956
HENDERSON HALL	44,900	405,500	1965
ICE ARENA	64,900	925,850	1974
KATKE GOLF CART STORAGE	2,800	27,600	1984
KATKE CLUBHOUSE/MAINT BLDG	5,600	83,200	1974
KNOLLCREST COMMONS	11,094	292,860	1961
MASSELINK COMPLEX	104,700	942,300	1955-58
MCKESSY HOUSE	6,534	52,000	1989
MCNERNEY HALL	47,000	482,750	1962
MERRILL HALL	51,700	515,050	1961
MILLER HALL	47,382	444,245	1963
PICKELL HALL	50,400	468,600	1964
PUTERBAUGH HALL	46,400	436,400	1965
RACQUET BALL FACILITY	38,800	994,000	1980-87
RANKIN CENTER	109,100	1,385,900	1958-87
SOUTH CAMPUS APARTMENTS	53,200	466,400	1958
SOUTH COMMONS	14,664	161,895	1963
SOUTHWEST COMMONS	19,500	253,600	1965-86
SOUTHWEST POWER PLANT	2,200	33,200	1964
T.T.C.	16,836	192,612	1985-87
TAGGART HALL	47,800	450,600	1964
TRAVIS HALL	51,700	515,050	1961
VANDERCOOK HALL	42,350	394,000	1957
WARD HALL	41,320	407,260	1963
WEST CAMPUS APARTMENTS	164,000	1,644,400	1969
TOTAL NON-GENERAL FUNDED	1,604,487	17,639,872	

**FERRIS STATE UNIVERSITY
TIMME LIBRARY**
Fall, 1992

Holdings

Monograph Titles	211,725
Serial Titles	4,674
Periodical Subscriptions	4,092
Physical Volumes	281,659
Items Barcoded for Circulation	288,923
Microforms (pieces)	3,161,385
U.S. Documents	138,521
Cartographic Materials	6,000
Miscellaneous Media (pieces)	60,982
Manuscripts (linear feet)	821.5

**Services
Averaged by Week**

Hours Open	84
Attendance (Fall Quarter)	10,576
Reference Transactions	566
Online Database Searches	3
Group Presentation	315

NOTE: "Monograph Titles...Items" are current. The remainder of the statistics are from the most recent IPEDS Report.

Source: FSU Library

Ferris State University Campus Map Key

Building	Address/Room	Occupancy	Room	Assignment	Occupancy	Assignment	Occupancy
Library	101	100	101	101	101	101	101
Library	102	100	102	102	102	102	102
Library	103	100	103	103	103	103	103
Library	104	100	104	104	104	104	104
Library	105	100	105	105	105	105	105
Library	106	100	106	106	106	106	106
Library	107	100	107	107	107	107	107
Library	108	100	108	108	108	108	108
Library	109	100	109	109	109	109	109
Library	110	100	110	110	110	110	110
Library	111	100	111	111	111	111	111
Library	112	100	112	112	112	112	112
Library	113	100	113	113	113	113	113
Library	114	100	114	114	114	114	114
Library	115	100	115	115	115	115	115
Library	116	100	116	116	116	116	116
Library	117	100	117	117	117	117	117
Library	118	100	118	118	118	118	118
Library	119	100	119	119	119	119	119
Library	120	100	120	120	120	120	120
Library	121	100	121	121	121	121	121
Library	122	100	122	122	122	122	122
Library	123	100	123	123	123	123	123
Library	124	100	124	124	124	124	124
Library	125	100	125	125	125	125	125
Library	126	100	126	126	126	126	126
Library	127	100	127	127	127	127	127
Library	128	100	128	128	128	128	128
Library	129	100	129	129	129	129	129
Library	130	100	130	130	130	130	130
Library	131	100	131	131	131	131	131
Library	132	100	132	132	132	132	132
Library	133	100	133	133	133	133	133
Library	134	100	134	134	134	134	134
Library	135	100	135	135	135	135	135
Library	136	100	136	136	136	136	136
Library	137	100	137	137	137	137	137
Library	138	100	138	138	138	138	138
Library	139	100	139	139	139	139	139
Library	140	100	140	140	140	140	140
Library	141	100	141	141	141	141	141
Library	142	100	142	142	142	142	142
Library	143	100	143	143	143	143	143
Library	144	100	144	144	144	144	144
Library	145	100	145	145	145	145	145
Library	146	100	146	146	146	146	146
Library	147	100	147	147	147	147	147
Library	148	100	148	148	148	148	148
Library	149	100	149	149	149	149	149
Library	150	100	150	150	150	150	150

