

Ferris State University Budget Overview

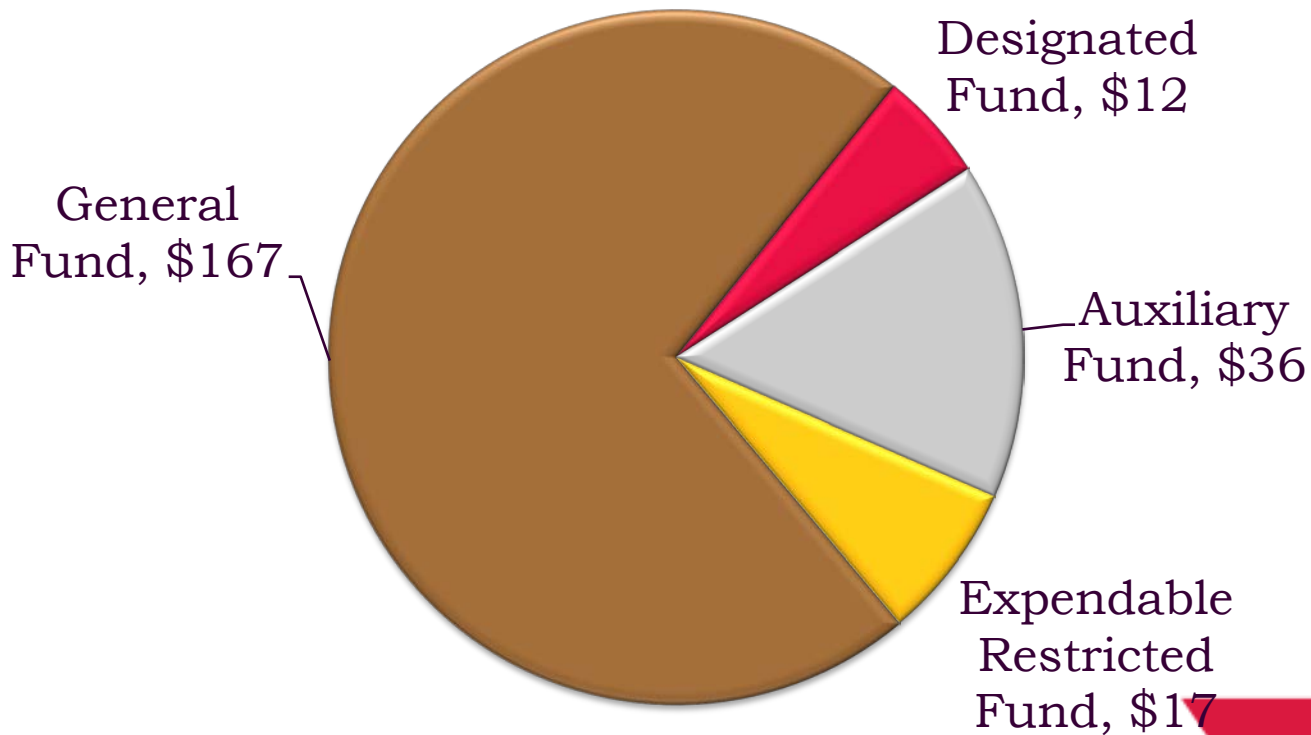
Deans' Council
June 2009



Discussion Topics

- Auxiliary Enterprise Budgets
- Michigan University Spending Comparison
- Kendall
- State and Tuition Revenue Trends
- Summer Revenue and Expense
- Other

FY 2008 Current Operating Funds Revenues - \$232 Million



FY 2008 Auxiliary Fund Detail

Housing/Dining - \$31.0M

Telephone Operations - \$1.6M

Health Center - \$1.2M

Motor Pool - \$1.1M

Others:

Copy center, holiday Inn,
Racquet Club, Bookstore,
Golf Course, Plant Stores,
Ice Arena, Mailroom, Residential
Network, Cablevision, Tot's Place,
Bus Operations, Vending



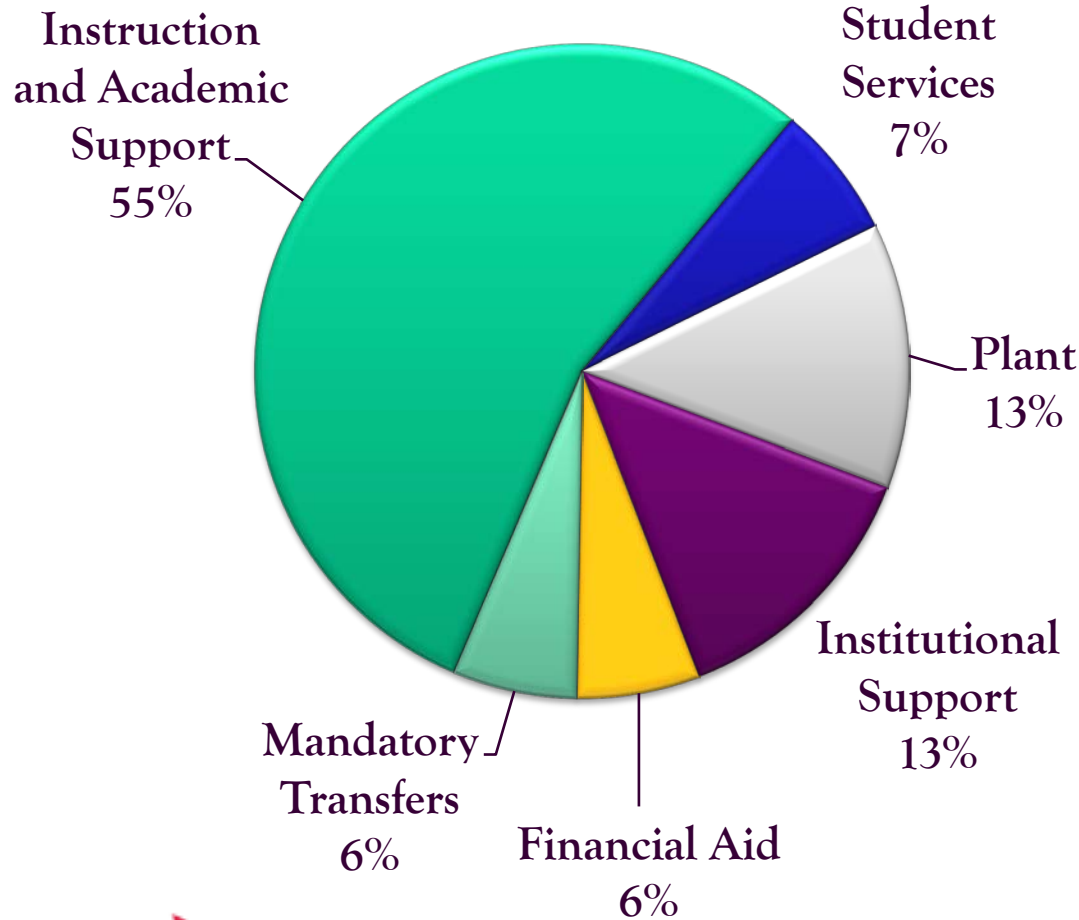
Auxiliary
Fund, \$36



FERRIS STATE UNIVERSITY

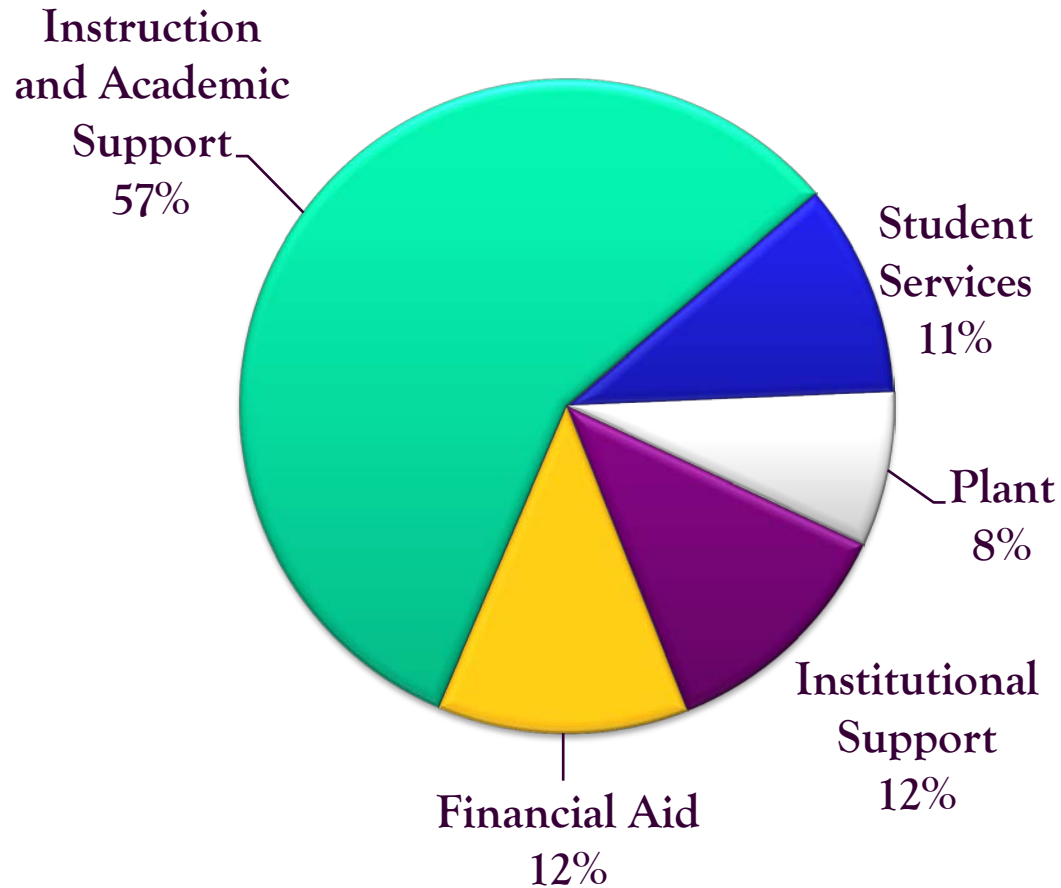
Imagine More

FSU FY 08 General Fund Spending \$169M



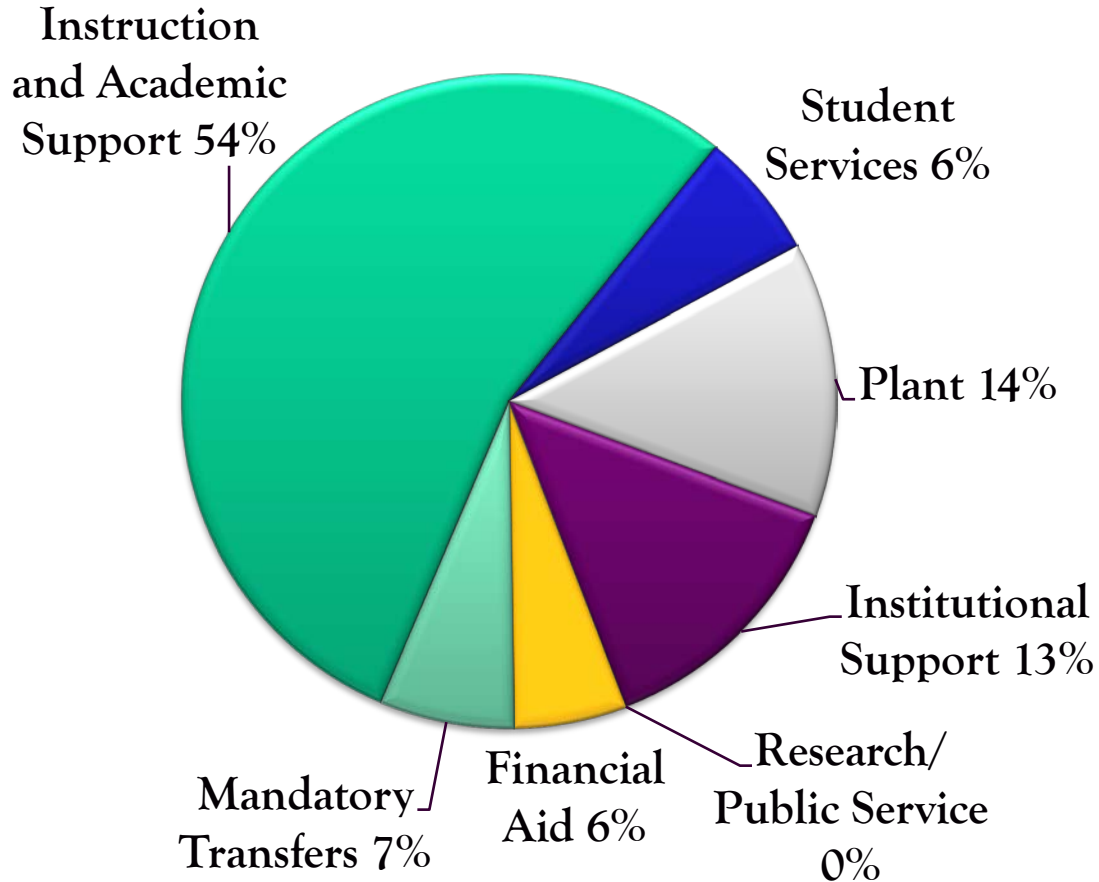
FSU FY 08 General Fund Spending

Kendall \$12.7M



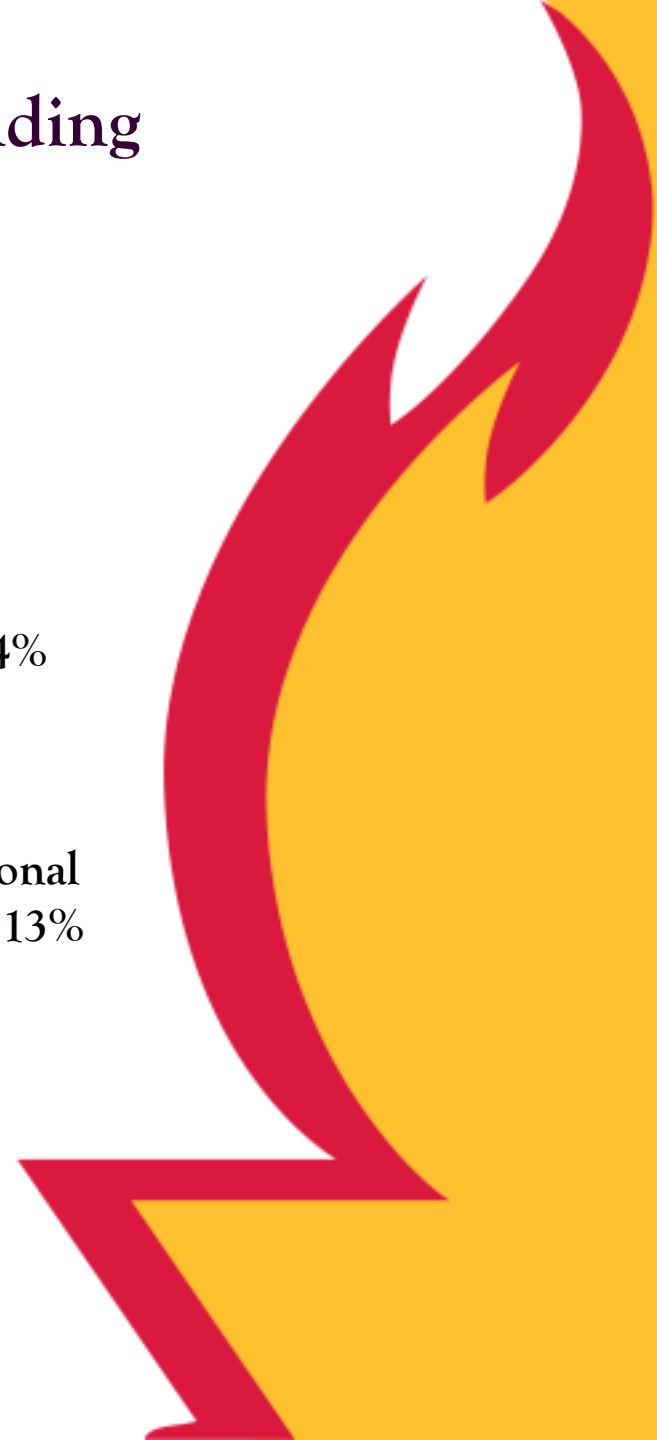
FSU FY 08 General Fund Spending

Without Kendall - \$157M



FERRIS STATE UNIVERSITY

Imagine More

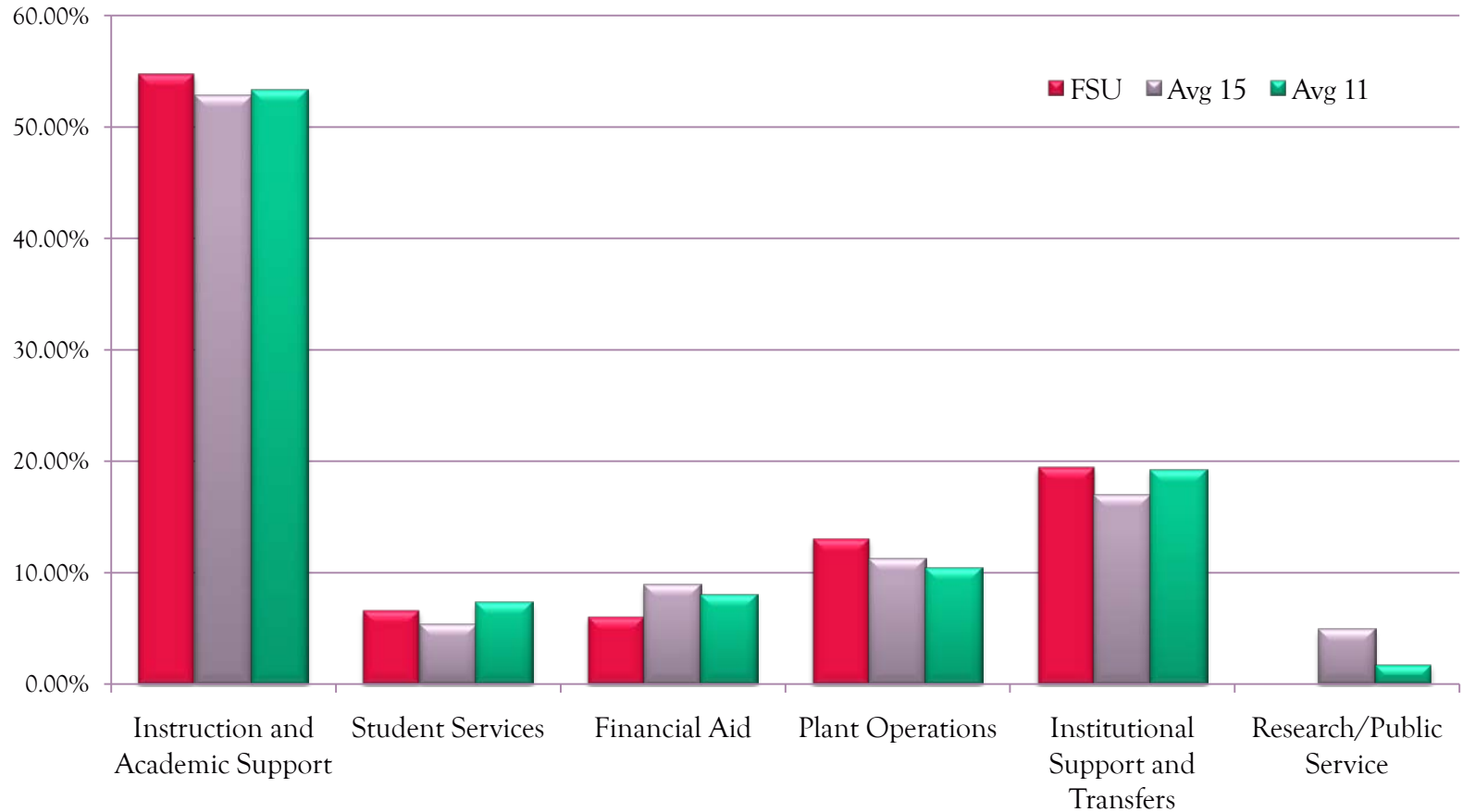


FSU FY 08 General Fund Spending

Functional Category	CMU	EMU	FSU	GVSU	LSSU	MSU	MTU	NMU	OAK	SVSU	U- MAA	UMD	UMF	WSU	WMU
Instruction	43.4%	41.6%	42.5%	43.5%	34.8%	46.5%	36.6%	35.6%	37.6%	36.6%	35.8%	43.2%	43.1%	39.5%	44.8%
Research	0.3%	0.5%	0.0%	1.1%	0.4%	4.4%	7.7%	0.4%	0.6%	0.3%	6.9%	0.8%	0.3%	6.3%	1.7%
Public Service	3.0%	1.1%	0.0%	0.7%	0.1%	1.0%	0.0%	0.5%	0.0%	0.0%	1.0%	0.2%	1.9%	0.2%	0.9%
Academic Support	10.1%	10.4%	12.2%	11.9%	9.0%	14.1%	8.1%	13.8%	13.1%	9.8%	12.4%	11.9%	12.4%	12.0%	12.4%
Student Services	4.8%	6.1%	5.1%	6.1%	6.1%	2.9%	4.4%	6.7%	6.0%	4.8%	4.1%	6.4%	7.4%	4.9%	4.3%
Institutional Support	13.9%	13.1%	10.0%	9.7%	16.4%	8.8%	12.7%	9.8%	10.6%	10.8%	8.0%	12.7%	12.4%	10.9%	8.9%
Plant Operations	7.9%	11.0%	13.1%	9.9%	14.6%	10.7%	8.1%	11.6%	7.4%	9.6%	13.4%	10.9%	12.1%	10.1%	11.5%
Financial Aid	5.3%	8.5%	6.1%	9.0%	11.0%	7.0%	11.9%	9.8%	6.4%	8.3%	11.1%	7.3%	5.1%	8.0%	11.4%
Auxiliary Enterprises	0.0%	3.6%	1.6%	2.0%	0.0%	0.1%	0.0%	1.9%	1.2%	2.4%	0.0%	1.5%	0.9%	0.9%	2.5%
Transfers	11.3%	4.1%	9.5%	6.1%	7.5%	4.6%	10.5%	10.1%	17.0%	17.5%	7.3%	5.0%	4.5%	7.2%	1.6%
TOTAL	100.0%	100.0%	100.0%	100.0%	100.0%	100.0%	100.0%	100.0%	100.0%	100.0%	100.0%	100.0%	100.0%	100.0%	100.0%
Instruction + Acad. Support	53.4%	52.0%	54.7%	55.3%	43.8%	60.6%	44.7%	49.4%	50.7%	46.4%	48.2%	55.1%	55.5%	51.6%	57.2%

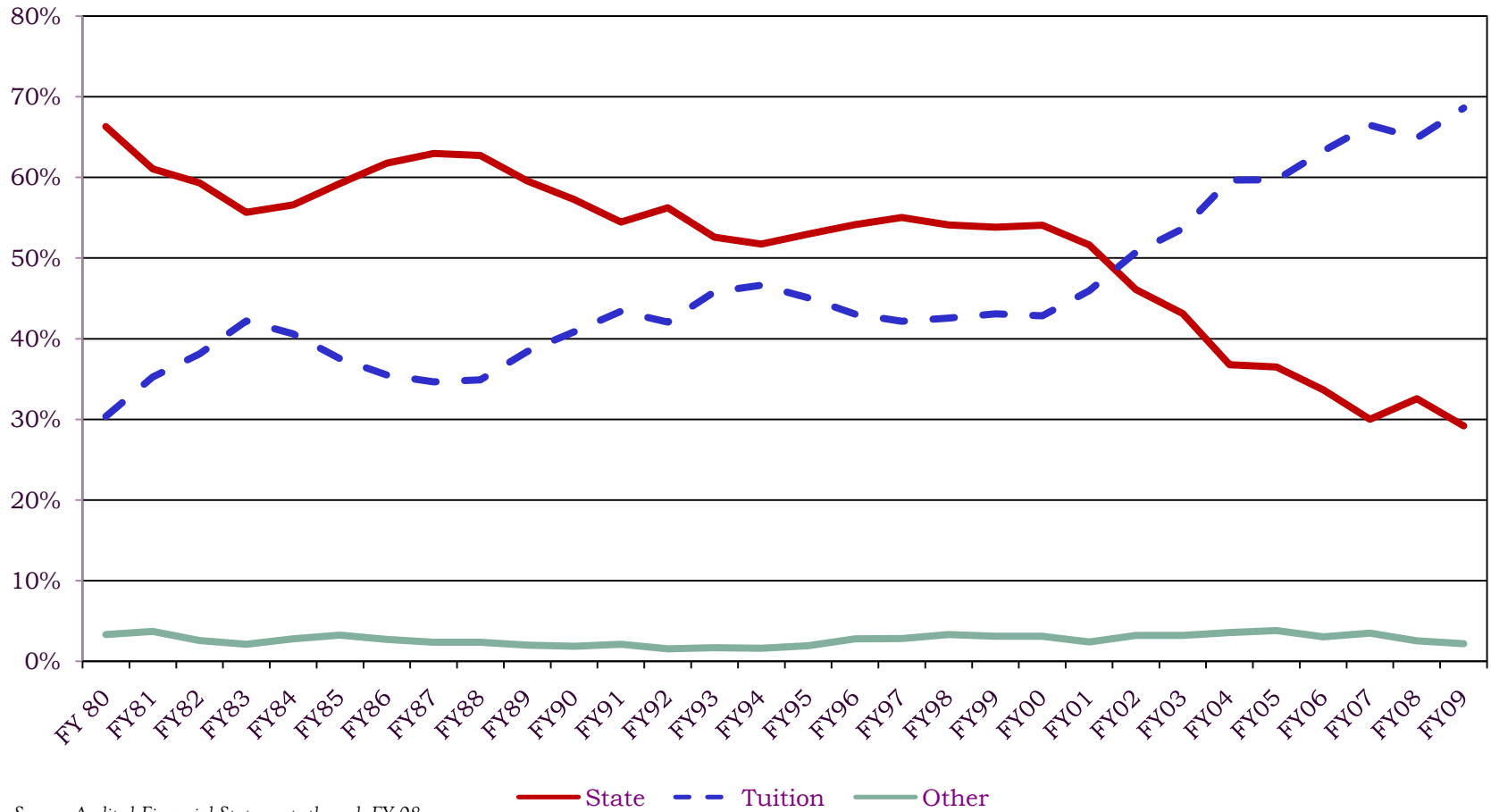


FSU FY 08 General Fund Spending Compared to 15-University Average



FSU General Fund Revenue History

Percent of Total



Source: Audited Financial Statements through FY 08



Source: Audited Financial Statements

Summer Analysis

Except for summer faculty salaries, we don't segment spending by semester

- What-If Calculation based upon Summer SCH
 - Summer SCH = 31,200 – 10% of Total
 - Summer tuition revenue \$10.5 Million
 - Summer faculty costs \$ 4.7 Million
 - Non-faculty costs \$10.5 Million
 - \$104.8 Million
 - 10% = \$10.5 Million
 - State Funding \$ 4.6 Million
 - 10% of appropriation for summer
- Essentially a break-even situation



Institutional Costs to be Covered from Tuition and State Revenues
Teahen Analysis (5/26/9)

	Total	Kendall	W/O KCAD
Total FY 2008 General Fund Spending	\$169,638,271	\$12,708,176	\$156,930,095
FY 2008 Student Credit Hours			
Summer 2007	33,017	1,817	31,200
Fall 2007	158,793	12,845	145,948
Spring 2008	147,688	12,421	135,267
Summer/Fall/Spring total	339,497	27,083	312,414
Spending per SCH	\$499.68	\$469.23	\$502.31
State % of Total Revenues – 29.3%			
FY 2008 State Appropriation Received	\$49,730,800	0	\$49,730,800
State funding per student credit hour	\$146.48	NA	\$159.18
Other revenues (non-tuition or state)	\$4,254,199	\$235,000	\$4,019,199
Other revenues per student credit hour	\$12.53	\$8.68	\$13.62
Balance funded through tuition	\$340.66	\$460.55	\$329.51

DISCUSSION

